

The original documents are located in Box 25, folder “Republican Governors Association - General” of the Ron Nessen Papers at the Gerald R. Ford Presidential Library.

Copyright Notice

The copyright law of the United States (Title 17, United States Code) governs the making of photocopies or other reproductions of copyrighted material. Ron Nessen donated to the United States of America his copyrights in all of his unpublished writings in National Archives collections. Works prepared by U.S. Government employees as part of their official duties are in the public domain. The copyrights to materials written by other individuals or organizations are presumed to remain with them. If you think any of the information displayed in the PDF is subject to a valid copyright claim, please contact the Gerald R. Ford Presidential Library.

Winter Conference

***REPUBLICAN GOVERNORS
ASSOCIATION***

NOVEMBER 20-22, 1975



**Governor CHRISTOPHER S. BOND, Missouri
CHAIRMAN**

**Governor ARCH A. MOORE, Jr., West Virginia
VICE-CHAIRMAN**

**Governor ROBERT F. BENNETT, Kansas
HOST GOVERNOR**

ALASKA



JAY S. HAMMOND



*Inaugurated December, 1974
Term will expire December, 1978*

JAY S. HAMMOND, born in Troy, New York, July 21, 1922. B.S., University of Alaska, 1948. Married; two daughters. Businessman. Served as fighter pilot in U.S. Marine Corps during World War II. Public offices include: Member, State House of Representatives, 1959-65; Manager, Bristol Bay Borough, 1965-67; Member, State Senate, 1967-72; Mayor, Bristol Bay Borough, 1972-74; Governor of Alaska since December, 1974. Member of Alaska Humanities Forum; International North Pacific Fisheries Convention Advisory Committee; Joint Federal-State Land Use Planning Advisory Committee; Alaska Airmen's Association, Inc.; Veterans of Foreign Wars; and National Rifle Association. Protestant. Republican.



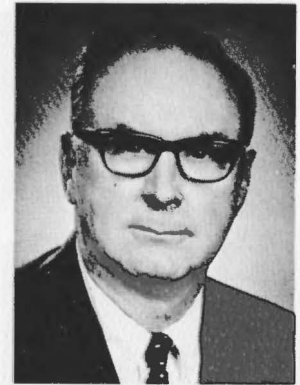
BELLA HAMMOND

AMERICAN SAMOA



*Inaugurated February, 1975
Term indefinite*

EARL B. RUTH, born in Spencer, North Carolina, February 7, 1916. A.B., University of North Carolina, 1938; M.A., 1942; Ph.D., 1955. Married; one son, three daughters. Educator. Served as lieutenant in U.S. Navy, 1942-45. Public offices include: Member, Salisbury City Council; Mayor Pro Tem, 1967-68; Member, U.S. House of Representatives, 1969-75; Governor of American Samoa since February, 1975. Past board member, YMCA; Past President, National Sportscasters and Sportswriters Awards Program; Member, American Legion, Civitan, and Elks. Presbyterian. Republican.



EARL B. RUTH



JANE RUTH

INDIANA



OTIS R. BOWEN



*Inaugurated January, 1973
Term will expire January, 1977*

OTIS R. BOWEN, born near Rochester, Indiana, February 26, 1918. B.A. (1939) and M.D. (1942), Indiana University. Married; three sons, one daughter. Physician. Served as Captain in U.S. Army Medical Corps during World War II. Public offices include: County Coroner, 1952-56; Member, State House of Representatives, 1957-58 and 1961-73; Speaker, 1967-73; Chairman, Legislative Council, 1970 and 1972; Governor of Indiana since January, 1973. Recipient in 1971 of Indiana Public Health Association Merit Award and Indiana University School of Medicine Alumnus of the Year Award. Member of Indiana and American Medical Associations; Indiana University Medical Alumni Council; Kiwanis Club; Chamber of Commerce; Alpha Omega Alpha; Phi Beta Pi; Delta Chi. Lutheran. Republican.

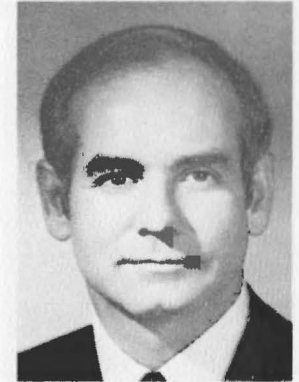


ELIZABETH BOWEN
"Beth"

IOWA



*Inaugurated January, 1969
Re-elected November, 1970, 1972, 1974
Term will expire January, 1979*



ROBERT D. RAY

ROBERT D. RAY, born in Des Moines, Iowa, September 26, 1928. Graduate of Drake University Law School; recipient of numerous honorary degrees. Married; three daughters. Attorney. Served in 1st Cavalry of U.S. Army. Public offices include: Republican State Chairman, 1963-67; Governor of Iowa since January, 1969. President, Alpha Kappa Psi, Omicron Delta Kappa; Member, Alpha Zeta; Former Chairman, March of Dimes of Iowa; Member, Polk County and American Bar Associations; Member, American Trial Lawyers and Iowa Academy of Trial Lawyers; Member, Advisory Commission on Intergovernmental Relations. Honorary Advisor, National Boy Scout Council. Recipient, National Distinguished Service Award, Future Farmers of America; Distinguished Alumnus Award, Drake University; Order of the Coif, Drake University Law School. Member, National Governors' Conference Executive Committee, 1970-71, 1974-75. Vice Chairman, Midwestern Governors' Conference, 1971-72; Chairman, 1972-73. Disciples of Christ. Republican.



BILLIE LEE RAY
"Billie"

KANSAS



ROBERT F. BENNETT



*Inaugurated January, 1975
Term will expire January, 1979*

ROBERT F. BENNETT, born in Johnson County, Kansas, May 23, 1927. A.B., University of Kansas, 1950; LL.B., 1952. Married; one son, three daughters. Attorney. U.S. Marine Corps, World War II and Korean War. Public offices include: Prairie Village City Council, 1955-57; Mayor, City of Prairie Village, 1957-65; State Senator, 1965-74; President of Senate, 1973-74; Governor of Kansas since January, 1975. Past President, Kansas League of Municipalities; former Secretary-Treasurer, Executive Council of Kansas Bar Association. Member of Kansas, Missouri, and American Bar Associations; Old Mission Lodge, AF&AM. Presbyterian. Republican.



OLIVIA BENNETT

MICHIGAN



*Succeeded to office January, 1969
Elected November, 1970, 1974
Term will expire January, 1979*



WILLIAM G. MILLIKEN

WILLIAM G. MILLIKEN, born in Traverse City, Michigan, March 26, 1922. Graduate of Yale University; honorary Doctor of Laws degrees from University of Michigan, Central Michigan University, Detroit Institute of Technology and Eastern Michigan University. Married; one son, one daughter. President of J. W. Milliken, Inc., department stores. Combat flier with fifty missions in World War II; awarded Purple Heart, Air Medal with two Oak Leaf Clusters, European Ribbon with three battle stars. Public offices include: Member, Michigan Senate, 1960-64; Majority Floor Leader, 1963-64; Lieutenant Governor, 1965-68; succeeded to office of Governor, January, 1969, to fill vacancy created by resignation of Governor George Romney. Member of Board of Counselors, Smith College, Northampton, Massachusetts; former member, Michigan Waterways Commission. Chairman, Republican Governors' Association, 1972. Member, National Governors' Conference Executive Committee, 1973-74; Chairman, Committee on Rural and Urban Development, 1975. Vice Chairman, Midwestern Governors' Conference, 1973-74; Chairman, 1974-75. Congregationalist. Republican.



HELEN MILLIKEN

MISSOURI



CHRISTOPHER S. BOND



*Inaugurated January, 1973
Term will expire January, 1977*

CHRISTOPHER S. BOND, born in St. Louis, Missouri, March 6, 1939. Graduate, Princeton University, 1960; University of Virginia Law School, 1963; honorary Doctor of Laws degrees from Westminster College and William Jewell College. Married. Attorney. Public offices include: Clerk, United States Court of Appeals for the Fifth Circuit, 1963-64; Assistant Attorney General of Missouri, 1969-70; State Auditor, 1971-73; Governor of Missouri since January, 1973. Recipient, Jaycees One of Ten Outstanding Young Men of America, 1974. Trustee, School of the Ozarks; past Director, Missouri Association for Social Welfare and Audrain County Cerebral Palsy School. Member of Jaycees, Optimists, Omicron Delta Kappa, Order of the Coif. Chairman, Republican Governors Association, 1974-75. Member, National Governors' Conference Executive Committee, 1974-75. Presbyterian. Republican.



CAROLYN BOND

NEW HAMPSHIRE



*Inaugurated January, 1973
Re-elected November, 1974
Term will expire January, 1977*

MELDRIM THOMSON, JR., born in Pittsburgh, Pennsylvania, May 8, 1912. Attended Mercer University; LL.B., University of Georgia. Married; four sons, two daughters. Publisher. Public offices include: School Board Chairman; Member, Constitutional Convention; Governor of New Hampshire since January, 1973. Vice Chairman, New England Governors' Conference, 1974. Congregationalist. Republican.



MELDRIM THOMSON, JR.



GALE THOMSON

NORTH CAROLINA



JAMES E. HOLSHOUSER, JR.



*Inaugurated January, 1973
Term will expire January, 1977*

JAMES E. HOLSHOUSER, JR., born in Boone, North Carolina, October 8, 1934. Graduate of Davidson College and University of North Carolina Law School. Married; one daughter. Attorney. Public offices include: Member, State House of Representatives, 1962-66, 1968-73; Governor of North Carolina since January, 1973. Member of American Revolution Bicentennial Commission, 1969; North Carolina Bar Association. National and state winner, Jaycees Freedom Guard Award, 1971. Member, National Governors' Conference Executive Committee, 1973-75. Chairman, Southern Regional Education Board, 1974-75. Presbyterian. Republican.



PATRICIA HOLSHOUSER

OHIO



*Inaugurated January, 1963
Re-elected November, 1966
Term expired January, 1971
Inaugurated January, 1975
Term will expire January, 1979*



JAMES A. RHODES

JAMES ALLEN RHODES, born in Coalton, Ohio, September 13, 1909. Attended Ohio State University; honorary degrees from Heidelberg, Rio Grande, Steubenville and Otterbein Colleges, and Miami, Akron, Capital, Youngstown, Wilberforce, Toledo, Cincinnati, Ohio State and Ohio Universities. Married; three daughters. Businessman. Public offices include: Member, Columbus Board of Education, 1937-39; City Auditor, Columbus, 1940-44; Mayor of Columbus, 1944-53; State Auditor, 1953-63; Governor of Ohio, 1963-71 and since January, 1975. Member, United States Olympic Committee; organizer, Knot Hole Gang; founder, National Caddie Association, Columbus Boys' Club, All-American Newspaperboys Sports Scholarship; President, Amateur Athletic Union; represented the United States at the 1948 Olympic Games in London; founder of the Pan American Games. State Chairman, Cancer Crusade, 1959, and Easter Seal Campaign, 1962; Trustee Emeritus, Rio Grande College; Chairman, National Advisory Council for Vocational Education. Member, National Governors' Conference Executive Committee, 1963-64, 1966-67. Vice Chairman, Midwestern Governors' Conference, 1965-66; Chairman, 1966-67. Presbyterian. Republican.



HELEN RHODES

SOUTH CAROLINA



JAMES B. EDWARDS



*Inaugurated January, 1975
Term will expire January, 1979*

JAMES B. EDWARDS, born in Hawthorne, Florida, June 24, 1927. B.S., College of Charleston, 1950; D.M.D., University of Louisville, 1955. Married; one son, one daughter. Dentist. Officer in U.S. Maritime Service, 1944-47; U.S. Navy, 1955-57. Public offices include: Member, Federal Hospital Council, 1969-73; State Senate, 1973-75; Governor of South Carolina since January, 1975. Past Director, Coastal Carolina Boy Scouts; Past member, Board of Trustees, Charleston County Hospital and Greater Charleston YMCA; Past member, Sertoma International and Advisory Council to the Dean, College of Dental Medicine, Medical University of South Carolina. Member, Board of Trustees, College Preparatory School, and Baker Hospital, Charleston, South Carolina. Member of Executive Committee, Alumni Association, College of Charleston; Charleston Council of the Navy League of the U.S.; Delta Sigma Delta; Pi Kappa Phi; Omicron Delta Kappa; Phi Delta; Mason; Order of AHEPA, and numerous professional organizations. Methodist. Republican.



ANN EDWARDS

VIRGINIA



*Inaugurated January, 1966
Term expired January, 1970
Inaugurated January, 1974
Term will expire January, 1978*



MILLS E. GODWIN, JR.

MILLS E. GODWIN, JR., born in Nansemond County, Virginia, November 19, 1914. LL.B., University of Virginia, 1938; LL.D. (hon.), Elon, Roanoke, and Elmira Colleges, College of William and Mary, and Washington and Lee University. Married. Attorney and farm operator; F.B.I. special agent, 1942-46. Public offices include: Assistant Commonwealth's Attorney, 1938-42; member, State House of Delegates, 1948-52; Senate, 1952-60; Lieutenant Governor, 1962-66; Governor of Virginia, 1966-70, and since January, 1974. Board member, Elon and Virginia Wesleyan Colleges and Thomas Jefferson Memorial Foundation. Recipient of special awards from Suffolk and Nansemond County, Virginia Chamber of Commerce, National Guard and Education Association. Past President, Ruritan National; member of Phi Delta Phi, Omicron Delta Kappa, Raven Society and Masons. Member, National Governors' Conference Executive Committee, 1967-69. Vice Chairman, Southern Governors' Conference, 1968-69, 1974-75. Chairman, Southern Regional Education Board, 1968-69. Congregational Christian. Republican.



KATHERINE GODWIN

WASHINGTON



DANIEL J. EVANS



*Inaugurated January, 1965
Re-elected November, 1968, 1972
Term will expire January, 1977*

DANIEL JACKSON EVANS, born in Seattle, Washington, October 16, 1925. B.S. and M.S., University of Washington, 1948 and 1949. Married; three sons. Civil and Structural Engineer. Served as Naval officer in Pacific Theatre during World War II and in Korean War; Admiral's aide at peace negotiations at Panmunjom; discharged as Lieutenant, Senior Grade, in 1953. Public offices include: Member, Washington House of Representatives, 1956-64; House Minority Floor Leader, 1960-64; Governor of Washington since January, 1965. Member, Washington State Society of Professional Engineers and American Society of Civil Engineers. Member, National Governors' Conference Executive Committee, 1966-67, 1973-75; Chairman, Committee on Constitutional Revision and General Government Organization, 1966-68; Chairman, Committee on Executive Management and Fiscal Affairs, 1969; Chairman, Committee on Transportation, Commerce, and Technology, 1969-72. Vice Chairman, Western Governors' Conference, 1967-68; Chairman, 1968-69. Chairman, National Governors' Conference, 1973-74. Congregationalist. Republican.



NANCY EVANS

WEST VIRGINIA



*Inaugurated January, 1969
Re-elected November, 1972
Term will expire January, 1977*

ARCH A. MOORE, JR., born in Moundsville, West Virginia, April 16, 1923. B.A. in Political Science (1948) and LL.B. (1951), West Virginia University; also attended Lafayette College. Married; one son, two daughters. Attorney. World War II veteran; Recipient of Purple Heart; Combat Infantryman's Badge; European Campaign Ribbon with three Battle Stars. Public offices include: Member, West Virginia House of Delegates, 1953-56; Member, United States House of Representatives, 1957-68 (served as Ranking Republican Member of numerous House Committees); Governor of West Virginia since January, 1969. Member of American Bar Association, American Judicature Association and Phi Delta Phi Legal Fraternity. Member of many fraternal, commercial, public service and veterans' organizations. Member, National Governors' Conference Executive Committee, 1969-70. Chairman, National Governors' Conference, 1971-72. Methodist. Republican.



ARCH A. MOORE, JR.



SHELLEY MOORE

REPUBLICAN GOVERNORS ASSOCIATION

310 First Street, S.E., Washington, D.C. 20003

Phone: (202) 484-6620

Chairman
HONORABLE ARCH A. MOORE, JR.
Governor of West Virginia

Vice Chairman
HONORABLE ROBERT F. BENNETT
Governor of Kansas

January 23, 1976

MEMORANDUM TO: Governors and Key Assistants

FROM: Robert Witt
Director of Public Relations



This is RGA Communications '76--the eighth installment of our internal information service, distributed to Governors and their key staff assistants.

The notebook contains a number of informational inserts, filed in the appropriate section. In the coming months, additional inserts will be mailed to you.

All materials will be printed on pre-holed paper, making it convenient for filing upon receipt--and, thus filed, ready for future reference. The letterhead and RGA signature will remain the same, with the exception of a key word (printed in blue) reflecting the subject matter.

I hope you will take a few moments to become familiar with Communications '76. If the past is prologue, this informational service should prove itself a valuable and handy reference in the coming year.

REPUBLICAN GOVERNORS ASSOCIATION

310 First Street, S.E., Washington, D.C. 20003

Phone: (202) 484-6620

Chairman

HONORABLE ARCH A. MOORE, JR.
Governor of West Virginia

Vice Chairman

HONORABLE ROBERT F. BENNETT
Governor of Kansas

REPUBLICAN GOVERNORS AND KEY ASSISTANTS

Alaska

Honorable Jay S. Hammond
Governor of Alaska
State Capitol
Juneau, Alaska 99801
(907) 465-3500

Robert Palmer
Assistant

Scott Foster
Press Contact

American Samoa

Honorable Earl B. Ruth
Governor of American Samoa
Government House
Pago Pago, American Samoa 96799
633-4116 (*call overseas operator*)

Richard Berg
Assistant

Neil Corbett
Press Contact

Indiana

Honorable Otis R. Bowen
Governor of Indiana
State Capitol
Indianapolis, Indiana 46204
(317) 633-4567

William Lloyd
Assistant

William Watt
Press Contact

Iowa

Honorable Robert D. Ray
Governor of Iowa
State Capitol
Des Moines, Iowa 50319
(515) 281-5211

Wythe Willey
Assistant

Dave Oman
Press Contact

Kansas

Honorable Robert F. Bennett
Governor of Kansas
Capitol Building
Topeka, Kansas 66612
(913) 296-3232

Pat Storey
Assistant

Leroy Towns
Press Contact

1/23/76

(over)

Michigan

Honorable William G. Milliken
Governor of Michigan
State Capitol
Lansing, Michigan 48903
(517) 373-3410

George Weeks
Assistant

Al Sandner
Press Contact

Missouri

Honorable Christopher S. Bond
Governor of Missouri
State Capitol
Jefferson City, Missouri 65101
(314) 751-3222

Bruce Blomgren
Assistant

Bruce Blomgren
Press Contact

New Hampshire

Honorable Meldrim Thomson, Jr.
Governor of New Hampshire
State House
Concord, New Hampshire 03301
(603) 271-2121

Peter Thomson
Assistant

Joe Zellner
Press Contact

North Carolina

Honorable James E. Holshouser, Jr.
Governor of North Carolina
State Capitol
Raleigh, North Carolina 27611
(919) 829-5811

Gene Anderson
Assistant

Jack Childs
Press Contact

Ohio

Honorable James A. Rhodes
Governor of Ohio
State House
Columbus, Ohio 43215
(614) 466-3526

Thomas Moyer
Assistant

Chan Cochran
Press Contact

South Carolina

Honorable James B. Edwards
Governor of South Carolina
State House
Columbia, South Carolina 29201
(803) 758-3261

Heyward Dantzler
Assistant

Robert G. Liming
Press Contact

Virginia

Honorable Mills E. Godwin, Jr.
Governor of Virginia
State Capitol
Richmond, Virginia 23219
(804) 786-2211

Bruce C. Miller
Assistant

John H. Wessells, Jr.
Press Contact

Washington

Honorable Daniel J. Evans
Governor of Washington
State Capitol
Olympia, Washington 98501
(206) 753-6780

James M. Dolliver
Assistant

Jay Frederickson
Press Contact

West Virginia

Honorable Arch A. Moore, Jr.
Governor of West Virginia
State Capitol
Charleston, West Virginia 25305
(304) 348-2000

Thomas Craig
Assistant

Norman Yost
Press Contact

REPUBLICAN GOVERNORS ASSOCIATION

310 First Street, S.E., Washington, D.C. 20003

Phone: (202) 484-6620

Chairman
HONORABLE ARCH A. MOORE, JR.
Governor of West Virginia

Vice Chairman
HONORABLE ROBERT F. BENNETT
Governor of Kansas

REPUBLICAN STATE OFFICES IN WASHINGTON, D.C.

Indiana (202) 543-2042

Mr. Donald Newman
Director, Indiana Liaison Office
422 First Street, S.E., Suite 202
Washington, D.C. 20003

Ohio (202) 223-1725

Colonel Thomas J. Grant
Director, Washington Office
State of Ohio
1150 Connecticut Avenue, N.W. Room 709
Washington, D.C. 20036

Michigan (202) 872-8550

Mr. Robert J. Horn
Director, Washington Office
State of Michigan
1150 17th Street, N.W., Suite 609
Washington, D.C. 20036

South Carolina (202) 785-1323

Mr. Tony Jurich
Director, Washington Office
State of South Carolina
1620 Eye Street, N.W.
Washington, D.C. 20006

North Carolina (202) 452-0515

Mrs. Renee Stewart
North Carolina, Washington Office
1100 17th Street, N.W., Suite 401
Washington, D.C. 20036

Washington (202) 254-7030

Mr. George Bullock
Assistant to Governor Daniel Evans
of Washington
Pacific Northwest Regional Commission
2435 Virginia Avenue, N.W.
Washington, D.C. 20036

C
C
C

**C
A
M
P
A
I
G
N**

RGAA

Campaign

REPUBLICAN GOVERNORS ASSOCIATION
10 FIRST STREET, S.E., WASHINGTON, D.C. 20003
202 • 484-6620

CHAIRMAN
GOVERNOR ARCH A. MOORE, JR., W.VA.
VICE CHAIRMAN
GOVERNOR ROBERT F. BENNETT, KANSAS

EXECUTIVE DIRECTOR
RALPH E. GRIFFITH
PUBLIC RELATIONS DIRECTOR
ROBERT W. WITT

1976 - 1977 ELECTION GUIDE

1976 GUBERNATORIAL ELECTION

In 1976 Fourteen States and Puerto Rico will elect Governors. This information, from Secretaries of State and State election boards, is accurate as of January, 1976.

Arkansas

Filing dates: Noon, March 6, 1976 through Noon, April 6, 1976.
Primary: May 25, 1976.
Primary Runoff: June 8, 1976.
General Election: November 2, 1976.

Delaware

There is no provision for individual gubernatorial candidate filing in Delaware. The candidates are selected by party convention and/or party primaries.
Primary: September 11, 1976.
General Election: November 2, 1976.

Illinois

Filing dates: December 8 - 15, 1975.
Primary: March 16, 1976.
General Election: November 2, 1976

Indiana

Filing deadline: March 15, 1976.
Primary: May 4, 1976.
General Election: November 2, 1976.

(over)

Missouri

Filing deadline: April 27, 1976.
Primary: August 3, 1976.
General Election: November 2, 1976.

Montana

Filing deadline: April 22, 1976.
Primary: June 1, 1976.
General Election: November 2, 1976.

New Hampshire

Filing dates: July 1-15, 1976.
Primary: September 14, 1976.
General Election: November 2, 1976.

North Carolina

Filing dates: May 12-28, 1976.
Primary: August 17, 1976.
Primary Runoff: September 14, 1976.
General Election: November 2, 1976

North Dakota

Filing dates: April 24 - July 23, 1976.
Primary: September 7, 1976.
General Election: November 2, 1976.

Rhode Island

Filing dates: June 1-10, 1976.
Primary: September 14, 1976.
General Election: November 2, 1976.

(more)

Utah

Filing dates: April 15 - May 10, 1976.

Primary: September 14, 1976.

General Election: November 2, 1976.

NOTE: In Utah, Party nominating conventions are set by the individual political parties, but must be held in June or July. The two candidates receiving the greatest number of delegate votes are then placed on the primary election ballot. Should a candidate receive more than 70% of the delegate votes in a nominating convention, that individual becomes the official candidate.

Vermont

Filing deadline: August 4, 1976.

Primary: September 14, 1976.

General Election: November 2, 1976.

Washington

Filing dates: July 26-30, 1976.

Primary: September 21, 1976.

General Election: November 2, 1976.

West Virginia

Filing dates: January 5 - February 7, 1976.

Primary: May 11, 1976.

General Election: November 2, 1976.

Puerto Rico

Dates for nominating candidates: April 30, 1976.

Primary election: July 11, 1976.

General Election: November 2, 1976.

NOTE: Candidates are chosen by the political parties in nominating conventions. If a single candidate is not chosen, the top contenders are placed on the Primary election ballot.

(over)

1977 GUBERNATORIAL ELECTION

New Jersey

Filing deadline: April 28, 1977
Primary: June 7, 1977
General Election: November 8, 1977

Virginia

Filing deadline: April 11, 1977
Primary: June 10, 1977
General Election: November 1, 1977

* * * * *

RGAA

Campaign

REPUBLICAN GOVERNORS ASSOCIATION
3 FIRST STREET, S.E., WASHINGTON, D.C. 20003
202 • 484-6620

CHAIRMAN
GOVERNOR ARCH A. MOORE, JR., W.VA.

VICE CHAIRMAN
GOVERNOR ROBERT F. BENNETT, KANSAS

EXECUTIVE DIRECTOR
RALPH E. GRIFFITH
PUBLIC RELATIONS DIRECTOR
ROBERT W. WITT

FOR YOUR CONVENIENCE, PLEASE FIND LISTED BELOW THOSE STATES WITH JOINT ELECTION OF GOVERNOR AND LIEUTENANT GOVERNOR.

<i>Alaska</i>	<i>Illinois</i>	<i>Michigan</i>	<i>North Dakota</i>
<i>Colorado</i>	<i>Indiana</i>	<i>Minnesota</i>	<i>Pennsylvania</i>
<i>Connecticut</i>	<i>Kansas</i>	<i>Montana</i>	<i>South Dakota</i>
<i>Florida</i>	<i>Maryland</i>	<i>New Mexico</i>	<i>Wisconsin</i>
<i>Hawaii</i>	<i>Massachusetts</i>	<i>New York</i>	<i>Nebraska</i>

**G
O
V
E
R
N
M
E
N
T**

RGAA: Government

CHAIRMAN
GOVERNOR ARCH A. MOORE, JR., W.VA.

VICE CHAIRMAN
GOVERNOR ROBERT F. BENNETT, KANSAS

REPUBLICAN GOVERNORS ASSOCIATION
FIRST STREET, S.E., WASHINGTON, D.C. 20003
202 • 484-6620

EXECUTIVE DIRECTOR
RALPH E. GRIFFITH
PUBLIC RELATIONS DIRECTOR
ROBERT W. WITT

The U.S. Department of Commerce, in 1975, published the following statistics concerning Voter Participation in November, 1974. Statistics from previous election years are included for reference.

It should be noted that this reported estimate of 45% compares with 39% from the preliminary count of actual votes cast as published in Congressional Quarterly. Previous experience has shown that there is a tendency for persons to overreport voter participation in surveys.

Reported Registration Rates, by Region and Race: November 1966 to 1974

(Civilian noninstitutional population)

Region, race, and Spanish origin	Congressional elections			Presidential elections	
	1974	1970	1966	1972	1968
UNITED STATES					
Total, voting age.....	62.2	68.1	70.3	72.3	74.3
White.....	63.5	69.1	71.6	73.4	75.4
Negro.....	54.9	60.8	60.2	65.5	66.2
Spanish origin ¹	34.9	(NA)	(NA)	44.4	(NA)
NORTH AND WEST					
Total, voting age.....	63.3	70.0	73.8	73.9	76.5
White.....	64.6	70.8	74.5	74.9	77.2
Negro.....	54.2	64.5	68.8	67.0	71.8
SOUTH					
Total, voting age.....	59.8	63.8	62.2	68.7	69.2
White.....	61.0	65.1	64.3	69.8	70.8
Negro.....	55.5	57.5	52.9	64.0	61.6

NA Not available.

¹Persons of Spanish origin may be of any race.

Of the 25 million persons who were registered, but did not vote, 7.7 million reported that they had been unable to go to the polls because of illness, disability, or inability to take time off from work. Another 7.7 million reported that they were not interested in the election, did not like the candidates, or did not think their vote would matter. Others were out of town or did not know of the election.

This report provides advance statistics on voting and registration; more detailed tabulations and analysis will be presented in a forthcoming report. Statistics presented in this report are based on answers to a series of questions asked of a sample of persons of voting age two weeks

after the elections of November 5. The questions were designed to provide information on voting behavior and reasons for nonparticipation of the various segments of the population.

Since the data presented in this report are based on a sample of the population, they are, of course, subject to sampling errors. Confidence limits of 95 percent probability were applied to all statements of this report. This means that the chances are at least 19 in 20 that a difference identified in the text indicates a true difference in the population rather than the chance variations arising from the use of samples. Estimates of the size of the sampling errors will be included in the forthcoming detailed report.

**Table 1. Reported Voting and Registration of the Population of Voting Age, by Age and Sex:
November 1974**

(Numbers in thousands. Civilian noninstitutional population)

Age and sex	All persons	Reported that they were registered			Reported not registered ²
		Total	Voted	Did not vote ¹	
Both sexes.....	141,299	87,889	63,164	24,725	53,410
18 to 20 years.....	11,621	4,234	2,412	1,822	7,387
21 to 24 years.....	14,098	6,384	3,718	2,666	7,714
25 to 29 years.....	15,957	8,197	5,396	2,801	7,760
30 to 34 years.....	13,351	7,830	5,438	2,392	5,522
35 to 44 years.....	22,355	14,902	10,971	3,931	7,453
45 to 54 years.....	23,569	17,078	13,169	3,909	6,491
55 to 64 years.....	19,392	14,560	11,297	3,263	4,833
65 to 74 years.....	13,316	9,721	7,428	2,293	3,595
75 years and over.....	7,639	4,983	3,336	1,647	2,656
Male.....	66,393	41,704	30,675	11,029	24,689
18 to 20 years.....	5,540	2,019	1,184	835	3,521
21 to 24 years.....	6,000	3,144	1,852	1,293	3,656
25 to 29 years.....	7,726	3,857	2,550	1,307	3,869
30 to 34 years.....	6,453	3,725	2,621	1,104	2,728
35 to 44 years.....	10,741	7,100	5,286	1,814	3,641
45 to 54 years.....	11,337	8,262	6,500	1,762	3,075
55 to 64 years.....	9,133	7,032	5,598	1,434	2,101
65 to 74 years.....	5,779	4,456	3,573	884	1,322
75 years and over.....	2,884	2,107	1,511	596	776
Female.....	74,906	46,185	32,489	13,696	28,721
18 to 20 years.....	6,082	2,215	1,228	987	3,866
21 to 24 years.....	7,298	3,240	1,866	1,374	4,058
25 to 29 years.....	8,231	4,340	2,846	1,494	3,891
30 to 34 years.....	6,898	4,105	2,817	1,288	2,794
35 to 44 years.....	11,614	7,802	5,685	2,117	3,812
45 to 54 years.....	12,231	8,816	6,669	2,147	3,415
55 to 64 years.....	10,259	7,527	5,698	1,829	2,732
65 to 74 years.....	7,537	5,264	3,855	1,409	2,273
75 years and over.....	4,755	2,876	1,824	1,051	1,879
PERCENT DISTRIBUTION					
Both sexes.....	100.0	62.2	44.7	17.5	37.8
18 to 20 years.....	100.0	36.4	20.8	15.7	63.6
21 to 24 years.....	100.0	45.3	26.4	18.9	54.7
25 to 29 years.....	100.0	51.4	33.8	17.6	48.6
30 to 34 years.....	100.0	58.6	40.7	17.9	41.4
35 to 44 years.....	100.0	66.7	49.1	17.6	33.3
45 to 54 years.....	100.0	72.5	55.9	16.6	27.5
55 to 64 years.....	100.0	75.1	58.3	16.8	24.9
65 to 74 years.....	100.0	73.0	55.8	17.2	27.0
75 years and over.....	100.0	65.2	43.7	21.6	34.8
Male.....	100.0	62.8	46.2	16.6	37.2
18 to 20 years.....	100.0	36.4	21.4	15.1	63.6
21 to 24 years.....	100.0	46.2	27.2	19.0	53.8
25 to 29 years.....	100.0	49.9	33.0	16.9	50.1
30 to 34 years.....	100.0	57.7	40.6	17.1	42.3
35 to 44 years.....	100.0	66.1	49.2	16.9	33.9
45 to 54 years.....	100.0	72.9	57.3	15.5	27.1
55 to 64 years.....	100.0	77.0	61.3	15.7	23.0
65 to 74 years.....	100.0	77.1	61.8	15.3	22.9
75 years and over.....	100.0	73.1	52.4	20.7	26.9
Female.....	100.0	61.7	43.4	18.3	38.3
18 to 20 years.....	100.0	36.4	20.2	16.2	63.6
21 to 24 years.....	100.0	44.4	25.6	18.8	55.6
25 to 29 years.....	100.0	52.7	34.6	18.2	47.3
30 to 34 years.....	100.0	59.5	40.8	18.7	40.5
35 to 44 years.....	100.0	67.2	48.9	18.2	32.8
45 to 54 years.....	100.0	72.1	54.5	17.6	27.9
55 to 64 years.....	100.0	73.4	55.5	17.8	26.6
65 to 74 years.....	100.0	69.8	51.1	18.7	30.2
75 years and over.....	100.0	60.5	38.4	22.1	39.5

¹ Includes persons who were recorded as "do not know" and "not reported" on voting.

² Includes persons who were recorded as "do not know" and "not reported" on registration.

Table 2. Reason for Not Voting or Registering by Race: November 1974

(Numbers in thousands. Civilian noninstitutional population)

Voter participation and reason for not voting and registering	Total	White	Negro	Spanish origin ¹	Percent distribution			
					Total	White	Negro	Spanish origin ¹
Total, 18 years old and over.....	141,299	125,132	14,175	6,095	100.0	100.0	100.0	100.0
Voted.....	63,164	57,918	4,786	1,397	44.7	46.3	33.8	22.9
Did not vote.....	78,135	67,213	9,389	4,698	55.3	53.7	66.2	77.1
Registered.....	24,725	21,571	2,992	728	17.5	17.2	21.1	11.9
Reason for not voting:								
Illness, disability.....	4,328	3,704	596	128	3.1	3.0	4.2	2.1
Couldn't take time off from work.....	3,371	2,790	565	104	2.4	2.2	4.0	1.7
Machines not working, lines too long..	135	128	7	3	0.1	0.1	(Z)	(Z)
Out of town.....	3,285	3,064	200	59	2.3	2.4	1.4	1.0
Did not know about election.....	232	167	63	19	0.2	0.1	0.4	0.3
Not interested, just didn't get around to it.....	4,577	3,985	556	141	3.2	3.2	3.9	2.3
Dislike politics in general.....	629	587	40	28	0.4	0.5	0.3	0.5
Did not prefer any of the candidates..	2,142	1,971	155	60	1.5	1.6	1.1	1.0
Vote wouldn't matter anyway.....	366	328	36	-	0.3	0.3	0.3	-
Other reason.....	3,411	3,029	359	97	2.4	2.4	2.5	1.6
Reason not reported.....	2,248	1,818	415	89	1.6	1.5	2.9	1.5
Not registered ²	53,410	45,642	6,397	3,970	37.8	36.5	45.1	65.1
Reason for not registering:								
Not a citizen.....	4,005	3,143	180	1,582	2.8	2.5	1.3	26.0
Residence requirement not satisfied...	1,931	1,805	110	57	1.4	1.4	0.8	0.9
Recently moved, never got around to it.....	4,796	4,406	346	150	3.4	3.5	2.4	2.5
No transportation.....	454	334	115	6	0.3	0.3	0.8	0.1
Hours or place of registration inconvenient.....	1,357	1,209	132	66	1.0	1.0	0.9	1.1
Did not know how or where to register..	1,982	1,670	273	257	1.4	1.3	1.9	4.2
Physical disability.....	1,643	1,322	307	55	1.2	1.1	2.2	0.9
Not interested, just didn't get around to it.....	16,839	14,448	2,170	754	11.9	11.5	15.3	12.4
Dislikes politics in general.....	2,166	1,993	151	129	1.5	1.6	1.1	2.1
Did not prefer any of the candidates..	1,224	1,121	89	30	0.9	0.9	0.6	0.5
Vote wouldn't matter anyway.....	654	568	69	20	0.5	0.5	0.5	0.3
Other reason.....	5,417	4,567	731	265	3.8	3.6	5.2	4.3
Reason not reported.....	2,558	2,036	497	179	1.8	1.6	3.5	2.9

- Represents zero.

Z Less than 0.05 percent.

¹Persons of Spanish origin may be of any race.

²Includes 8,384 persons who did not report on registration, not shown separately.

Table 3. Reported Voter Participation and Reason for not Voting, for Persons who Were Registered: November 1974 and 1972

(Numbers in thousands. Civilian noninstitutional population)

Whether voted and reason for not voting	1974		1972	
	Number	Percent	Number	Percent
Total, 18 years old and over.....	141,299	100.0	136,203	100.0
Voted.....	63,164	44.7	85,766	63.0
Did not vote.....	78,135	55.3	50,437	37.0
Registered.....	24,725	17.5	12,714	9.3
Reason for not voting:				
Unable to go to polls.....	7,698	5.4	4,419	3.2
Out of town.....	3,286	2.3	1,464	1.1
Machines not working.....	135	0.1	269	0.2
Not interested.....	4,577	3.2	1,898	1.4
Dislikes politics.....	3,138	2.2	1,511	1.1
Other reasons.....	3,643	2.6	1,567	1.2
Reason not reported.....	2,248	1.6	1,586	1.2

Table 4. Reported Voter Participation and Reason for not Registering of Persons of Voting Age: November 1966 to 1974

(Numbers in thousands. Civilian noninstitutional population)

Whether voted and reason not registered	1974		1972		1970		1968		1966	
	Number	Percent	Number	Percent	Number	Percent	Number	Percent	Number	Percent
Total.....	141,299	100.0	136,203	100.0	120,701	100.0	116,535	100.0	112,800	100.0
Registered.....	87,889	62.2	98,480	72.3	82,181	68.1	86,574	74.3	79,295	70.3
Voted.....	63,164	44.7	85,766	63.0	65,888	54.6	78,964	67.8	62,518	55.4
Not registered.....	45,026	31.9	33,242	24.4	34,091	28.2	26,942	23.1	29,735	26.4
Reason not registered:										
Not a citizen.....	4,005	2.8	3,530	2.6	3,052	2.5	2,680	2.3	2,285	2.0
Residence requirement not satisfied.....	1,931	1.4	1,988	1.5	4,956	4.1	3,022	2.6	5,612	5.0
Unable to register.....	5,436	3.8	4,203	3.1	4,014	3.3	3,602	3.1		
Not interested.....	21,635	15.3	14,256	10.5						
Dislikes politics.....	4,044	2.9	2,513	1.8	17,131	14.2	14,366	12.3		
Other reasons.....	5,417	3.8	4,977	3.7	3,699	3.1	2,564	2.2		
Reason not reported.....	2,558	1.8	1,775	1.3	1,239	1.0	707	0.6	3,134	2.8
Registration not reported....	8,384	5.9	4,481	3.3	4,430	3.7	3,019	2.6	3,770	3.3

Note: Includes persons 18 years old and over in Georgia and Kentucky, 19 year old and over in Alaska, 20 years old and over in Hawaii, and 21 years old and over in the remaining States in 1966, 1968, and 1970. Includes all persons 18 years old and over in 1972 and 1974.

RGA:

News

REPUBLICAN GOVERNORS ASSOCIATION
310 FIRST STREET, S.E., WASHINGTON, D.C. 20003
202 • 484-6620

CHAIRMAN
GOVERNOR ARCH A. MOORE, JR., W.VA.
VICE CHAIRMAN
GOVERNOR ROBERT F. BENNETT, KANSAS

EXECUTIVE DIRECTOR
RALPH E. GRIFFITH
PUBLIC RELATIONS DIRECTOR
ROBERT W. WITT

FOR IMMEDIATE RELEASE:

Friday, January 9, 1976

Governor Arch A. Moore, Jr. of West Virginia, Chairman of the Republican Governors' Association, today named Ralph Griffith, as Executive Director of the RGA. Griffith succeeds James Galbraith in the post.

Griffith, a resident of Nashville, Tennessee, is a former political editor of the Knoxville Journal. He served as Press Secretary and Special Assistant to U. S. Senator Howard Baker and was Director of Information for former Tennessee Governor Winfield Dunn.

Immediately prior to joining the Republican Governors' Association, Griffith served as Assistant to the Director for Congressional-Media Relations, Office of Telecommunications Policy, Executive Office of the President.

In making the appointment, Governor Moore said, "Ralph Griffith brings to the post not only his knowledge of the total political arena, but his intimate practical knowledge of the workings of State government. I believe he will be a major asset to the RGA as the Republican Governors work to add significantly to their numbers during the 1976 elections."

Governor Moore also paid high compliments to James Galbraith. "During his six years with the RGA, Jim has been a constructive force in the development of the Association into a very useful arm of the nation's Republican Governors. On behalf of those Governors, I extend our appreciation to Jim for his dedication, and extend our best wishes to him in his new post." Galbraith resigned as RGA Executive Director to accept a position as Director of Corporate Communications with the Ti Corporation in Los Angeles, California.

#

PARTY

RGA:

Policy

REPUBLICAN GOVERNORS ASSOCIATION
3 FIRST STREET, S.E., WASHINGTON, D.C. 20003
202 • 484-6620

CHAIRMAN
GOVERNOR ARCH A. MOORE, JR., W.VA.

VICE CHAIRMAN
GOVERNOR ROBERT F. BENNETT, KANSAS

EXECUTIVE DIRECTOR
RALPH E. GRIFFITH

PUBLIC RELATIONS DIRECTOR
ROBERT W. WITT

What is the RGA?

Its membership consists of all Republican Governors and Republican Governors-elect of the United States.

When was the RGA formed?

The Association took roots in the summer of 1963 at the bipartisan National Governors Conference in Miami Beach. Its first chairman was then Governor Robert Smylie of Idaho. The Association acquired its first professional staff, based in Washington, D.C., in May, 1967.

What are the RGA's objectives?

The organization was designed "to enable the Republican Governors to take their proper position in expressing, developing and preserving the philosophy of the Republican Party in all the States of the Union." It assists in the election and re-election of Republican Governors and then offers the Governors an opportunity to consult and cooperate with each other as well as the Republican President, members of the Executive Branch and the Congress and Republican Party leaders.

Does the Association hold regular meetings?

Yes, the RGA holds two Conferences each year.

Does the Association have any special committees to carry out its objectives?

There are three committees. A Policy Committee has the job of developing suggestions for policy positions of the Association. It also conducts research for use of the members in the conduct of their political and governmental responsibilities. A Campaign Committee assists Republican Gubernatorial candidates. An Executive Committee deals with general RGA functions and consists of the Chairman, Vice Chairman and three Governors elected by the membership.

How is the Association funded?

Its operational expenses are funded through the Republican National Committee. Beginning in 1972, the RGA administered a campaign fund for Republican Gubernatorial campaigns. As the present time, the Association does not share in proceeds from the large Party fund-raising dinners as do other Republican Campaign organizations.

