

**The original documents are located in Box 20, folder “11/29/75-12/8/75 - Philippines (2)” of the Sheila Weidenfeld Files at the Gerald R. Ford Presidential Library.**

### **Copyright Notice**

The copyright law of the United States (Title 17, United States Code) governs the making of photocopies or other reproductions of copyrighted material. Gerald Ford donated to the United States of America his copyrights in all of his unpublished writings in National Archives collections. Works prepared by U.S. Government employees as part of their official duties are in the public domain. The copyrights to materials written by other individuals or organizations are presumed to remain with them. If you think any of the information displayed in the PDF is subject to a valid copyright claim, please contact the Gerald R. Ford Presidential Library.

Some items in this folder were not digitized because it contains copyrighted materials. Please contact the Gerald R. Ford Presidential Library for access to these materials.

Post Parade 1/18/76

# CE REPORT

ITS IT CANNOT ANSWER QUERIES ABOUT THIS COLUMN.

**STACKED DECK** Before President Ford departed on his Pacific tour last month to Peking, Djakarta and Manila, Mrs. Betty Ford was quietly visited in the White House by Mrs. Imelda Romualdez Marcos, First Lady of the Philippines. Betty and Imelda shared tea for 45 minutes during which Mrs. Marcos promised the Fords an overwhelming welcome in Manila.

Mrs. Marcos came through. Thousands of Filipinos lined the motorcade

Mrs. Ford - A.M.  
1/19/76

FYI

- Fran ✓
- Patti ✓
- Sally ✓
- Rusty -



Nancy

Would you confirm this story for me.

for me.

Thanks.

Sheila.

It is not true. Mrs. Marcos never mentioned it during her visit.

UP-058

(POLICY)

(BY HELEN THOMAS)

JAKARTA (UPI) -- PRESIDENT FORD'S TRIP TO CHINA RESULTED IN A REAFFIRMATION OF PARALLEL FOREIGN POLICIES BETWEEN THE TWO COUNTRIES ON CERTAIN KEY ISSUES, A HIGH-RANKING AMERICAN OFFICIAL SAID FRIDAY.

ANOTHER ACHIEVEMENT, THE OFFICIAL SAID, WAS THE FACT THAT THE CHINESE GAVE THE IMPRESSION THEY WILL DO NOTHING TO UNDERCUT THE U.S. POSITION IN THE PHILIPPINES, JAPAN, THAILAND OR ANYWHERE IN SOUTHEAST ASIA IN THE AFTERMATH OF THE AMERICAN WITHDRAWAL FROM INDOCHINA.

THE OFFICIAL, WHO DECLINED TO BE IDENTIFIED, SAID THAT IN MANY AREAS OF THE WORLD, THE UNITED STATES AND CHINA HAVE COMPATIBLE ANALYSES OF THE ISSUES, APPARENTLY TO COUNTER POLICIES OF THE SOVIET UNION.

AS BILLED IN ADVANCE, FORD'S FIVE DAYS IN CHINA PRODUCED NO DRAMATIC NEW DECISIONS. BUT THE OFFICIAL SAID IT DID DETERMINE THAT THE TWO COUNTRIES HAVE A COMMON INTEREST IN DETERRING EXPANSIONIST POLICIES AROUND THE GLOBE.

HOW THE PEKING SUMMIT AFFECTS U.S.-SOVIET RELATIONS REMAINS TO BE SEEN, THE OFFICIAL SAID, ALTHOUGH "THE CHINESE WOULD LOVE US TO GIVE UP DETENTE AND ATTACK THE RUSSIANS FRONTALLY, TO TAKE THE HEAT OFF THEM. THAT'S WHAT THEY WANT."

SECRETARY OF STATE HENRY KISSINGER WILL HAVE AN OPPORTUNITY TO TAKE A READING ON THIS QUESTION WHEN HE GOES TO MOSCOW LATER THIS MONTH.

CHINA AND RUSSIA HAVE A DEEP DISTRUST OF EACH OTHER, AND WITH THE UNITED STATES IN THE PICTURE, DIPLOMACY TAKES ON A TRIANGULAR ASPECT.

BUT THE U.S. OFFICIAL EMPHASIZED THAT THE UNITED STATES CAN TRUST THE CHINESE, WHOM HE DESCRIBED AS FOREIGN POLICY PROFESSIONALS.

"WITH THE CHINESE YOU DON'T ASK FOR A PLEDGE," HE SAID. "YOU ASK FOR A DISCUSSION OF HOW THEY SEE THEIR SITUATION AND HOW YOU SEE IT. THE CHINESE -- IF WHAT THEY TELL YOU THEY SEE IS COMPATIBLE WITH YOU, YOU DON'T NEED A PLEDGE."

HE SAID THE CHINESE PRIDE THEMSELVES ON THE SLOGAN "OUR WORD COUNTS," AND THAT IN THE PAST FOUR YEARS THERE HAS BEEN NO INSTANCE IN WHICH THEY MISLED THE UNITED STATES.

REGARDING CRITICISM OF THE PRESIDENT'S PEKING VISIT AS BEING UNNECESSARY, THE OFFICIAL SAID "WHAT WAS IMPORTANT WAS TO SEE A PRESIDENT WHO'S IN CHARGE, WHATEVER HAS HAPPENED, AND WHO SEEMS TO KNOW WHAT HE IS DOING" IN THE AFTERMATH OF THE WATERGATE SCANDAL THAT SWEEPED PRESIDENT RICHARD NIXON FROM OFFICE.

"THEY DIDN'T GET ANYTHING THAT WAS SPECTACULARLY NOVEL," HE SAID, "EXCEPT A SENSE OF STEADINESS IN AMERICAN POLICY."

SUMMING UP THE VISIT, THE OFFICIAL SAID: "IN TERMS OF REAL NATIONAL INTEREST, I THINK IT WAS A VERY GOOD TRIP. THE PRESIDENT IS VERY SATISFIED. HE HAS A RIGHT TO BE."

UPI 12-05 12:48 PES

N082

R

FORD (NL)

BY FRANK CORMIER

JAKARTA, INDONESIA (AP) -- PRESIDENT FORD SAID TODAY THE UNITED STATES "REGARDS ITSELF AS A PACIFIC NATION" AND "NO AREA OF THE WORLD IS MORE IMPORTANT TO US THAN ASIA. WE REMAIN FIRMLY COMMITTED TO PEACE AND SECURITY IN SOUTHEAST ASIA AND THROUGHOUT ASIA."

FORD MADE THE DECLARATION IN A TOAST TO INDONESIAN PRESIDENT SUHARTO AT A STATE BANQUET. AFTER A FINAL CONFERENCE WITH SUHARTO, FORD FLIES TO THE PHILIPPINES ON SATURDAY AS PART OF AN EFFORT TO UNDERSCORE CONTINUING AMERICAN INTEREST IN SOUTH ASIA.

THE PRESIDENTIAL VISIT TO INDONESIA AND THE PHILIPPINES MARKED FORD'S FIRST TRIP TO THIS PART OF THE WORLD SINCE THE FALL OF INDOCHINA LAST SPRING.

SECRETARY OF STATE HENRY KISSINGER SAID FORD WANTED TO MEET WITH SUHARTO TO DISCUSS "THE FUTURE OF SOUTHEAST ASIA, IN WHICH INDONESIA IS A KEY COUNTRY."

FORD TOLD SUHARTO HE CAME TO INDONESIA FOLLOWING A FOUR-DAY VISIT TO CHINA "BECAUSE OF AMERICA'S CONTINUING INTEREST IN YOUR COUNTRY'S SECURITY AND WELL-BEING."

SUHARTO, WHO MET WITH FORD IN THE UNITED STATES EARLIER THIS YEAR, SAID IN HIS DINNER TOAST THAT THE U.S. ATTITUDE TOWARD HIS COUNTRY IS "ALWAYS UNDERSTANDING AND GIVING POSITIVE RESPONSE TO THE PROBLZMS AND NEEDS OF INDONESIA."

THERE WERE NO OUTSTANDING ISSUES FOR DISCUSSION BETWEEN THE TWO PRESIDENTS

THE MAJOR ISSUE BETWEEN THE UNITED STATES AND THE PHILIPPINES CENTERS ON THE STATUS OF U.S. MILITARY BASES. PRESIDENT FERDINAND MARCOS, WHO IS RULING UNDER MARTIAL LAW, HAS TALKED ABOUT RENEGOTIATING AGREEMENTS UNDER WHICH THE BASES ARE MAINTAINED.

A SENIOR AMERICAN OFFICIAL TRAVELING WITH FORD SAID THE FUTURE STATUS OF THE BASES WAS NOT LIKELY TO BE RESOLVED DURING THE PRESIDENT'S OVERNIGHT STOP IN MANILA.

"WE DON'T OBJECT TO PHILIPPINE SOVEREIGNTY OVER THE BASES," HE SAID, BUT RATHER ARE CONCERNED ABOUT THE TERMS UNDER WHICH THEY WILL OPERATE.

THE INDONESIAN GOVERNMENT GAVE FORD A WARM WELCOME. A POLICE-ESTIMATED CROWD OF 100,000 LINED HIS MOTORCADE ROUTE INTO JAKARTA. THE PRESIDENT WAS PRESENTED WITH LAVISH GIFTS, INCLUDING A HANDMADE SILVER SERVICE FOR 12 AND A LARGE AND UNIQUE MUSIC BOX MADE IN GOOD PART OF HAND-CRAFTED SILVER.

FOLLOWING THE BANQUET, THE PRESIDENT, MRS. FORD, DAUGHTER SUSAN AND MEMBERS OF FORD'S PARTY WERE ENTERTAINED UNTIL NEAR MIDNIGHT BY INDONESIAN DANCERS FROM VARIOUS REGIONS OF THE ARCHIPELEGO NATION.

12-05-75 14:30EST

UP-080

(INDONESIAN BANQUET)

(BY RICHARD H. GROWALD)

JAKARTA (UPI) -- PRESIDENT FORD WASHED DOWN HIS GALANTINE OF DUCKLING AND Tournedos of beef with imported French wines and champagnes from crystal goblets today as guest of honor at the most sumptuous banquet of his Asian trip.

INDONESIAN PRESIDENT SUHARTO WENT ALL OUT FOR THE FORD FAMILY, ORDERING THE BEST GOLD DINNER PLATES AND THE FANCIEST CANDLESTICKS IN THE REALM.

ON THE VERANDA OF THE INDONESIAN PRESIDENTIAL PALACE, FORD, HIS WIFE BETTY, AND DAUGHTER SUSAN SIPPED DRINKS FROM THE CRYSTAL GOBLETs, SERENADED BY A TRADITIONAL INDONESIA GAMELAN ORCHESTRA PLAYING INSTRUMENTS DATING BACK 10 CENTURIES.

THEN THEY WENT INDOORS FOR THE FORMAL DINNER, A FEAST THAT INCLUDED GALANTINE OF DUCKLING, MADURA SOUP, Tournedos of beef, amphitriot with corn fritters, ROAST LEBANG POTATOES, BUTTERED BABY CARROTS, SAUTEED MUSHROOMS, TOSSED BANDUNG GREENS, SARI SIRSAK (FRUIT JUICE), MOCCA COFFEE AND POMPADOURS.

WITH DINNER CAME THE FRENCH WINES, QUIENTRE DEUX-MERS AND LEVELLONE BON, AND THE CHAMPAGNE, VEUVE CLICQUOT PONSARDIS.

IN FURTHER CONTRAST TO THE SPARTAN ATMOSPHERE OF FORD'S PEKING VISIT, SUHARTO GAVE THE PRESIDENT A 15-INCH GOLD AND IVORY KRIS -- A WAVY-BLADED INDONESIAN KNIFE, INLAID WITH EMERALDS, RUBIES, OPALS AND TOPAZ.

THE SUHARTOS GAVE MRS. FORD A GOLD FILIGREE HANDBAG THE SIZE OF A CANTELOUPE, AND PRESENTED SUSAN A GOLD BRACELET SHAPED LIKE A MYTHICAL SNAKE. THE THREE ABSENT FORD SONS GOT SMALL GOLDEN TIE CLIPS BEARING THE SYMBOL A GARUDA -- A MYTHICAL BIRD EQUIVALENT TO THE AMERICAN EAGLE AS INDONESIA'S NATIONAL SYMBOL.

THE FORDS GAVE SUHARTO A PORCELAIN SCULPTURE OF TWO EAGLES BY THE LATE AMERICAN DESIGNER EDWARD MARSHAL BOEHM, AND MRS. SUHARTO ALSO RECEIVED ANOTHER BOEHM PIECE, TITLED WINDFLOWER.

UPI 12-05 02:34 PES

UP-119

ADD 1 TAIWAN, WASHINGTON (UP-061)

THE U.S.-CHINA PEOPLES FRIENDSHIP ASSOCIATION SAID THE UNITED STATES MUST BREAK ALL DIPLOMATIC AND MILITARY TIES WITH TAIWAN AS A CONDITION FOR ESTABLISHING FULL, NORMAL RELATIONS WITH PEKING.

THE FRIENDSHIP ASSOCIATION, WHICH DESCRIBES ITSELF AS A PRIVATELY FINANCED GROUP WITH NO AID FROM PEKING, TOLD A NEWS CONFERENCE THE UNITED STATES MUST TAKE THREE STEPS TO ACHIEVE NORMAL RELATIONS WITH THE PEOPLES REPUBLIC:

- REMOVE ALL U.S. FORCES AND MILITARY INSTALLATIONS FROM TAIWAN.
- SCRAP THE 1954 MUTUAL DEFENSE TREATY WITH TAIWAN.
- CEASE RECOGNITION OF THE TAIWAN REGIME.

"WE URGE PRESIDENT FORD...TO TAKE THESE STEPS AND ESTABLISH FULL DIPLOMATIC RELATIONS WITH THE PEOPLE'S REPUBLIC OF CHINA NOW," ASSOCIATION PRESIDENT WILLIAM HINTON SAID.

UPI 11-28 03:39 PES



ON ARRIVAL AT MALACAÑANG, the US First Lady, Elizabeth B. Ford (left photo), signs the palace guest book, wherein she remarked: "With warmest wishes and kind affection." On the other hand, President Ford (right photo), noted on the guest book a "most wonderful welcome by great friends." Looking on are President Marcos and the First Lady, Mrs. Imelda Romualdez Marcos.

# FM, FORD START TALKS ON BASES

**THE SUNDAY  
TRIBUNE**

VOLUME III NUMBER 190

**US President,  
party given  
big welcome**

MANILA—President Ford, on the third and final stop of

**THE  
TRIB  
25c  
ONLY**



and the First Lady,  
Mrs. Imelda Romualdez  
Marcos.

# TALKS ON DAGO

# THE SUNDAY TRIBUNE

VOLUME III NUMBER 190

SUNDAY, DECEMBER 7, 1975, PHILIPPINES

## LPG dealers get cylinder deadline

MANILA — Liquefied Petroleum Gas (LPG) processors and dealers have only 120 days to comply with the requirement to attach measuring devices in LPG cylinders and containers, the Department of Trade said today.

The new regulation was contained in Administrative Order No. 6 which requires proper labelling on marking of containers to represent

veal the containers contents. Trade Secretary Troadio T. Quiazon said the deadline for installing measuring

ment by availing themselves of the services of experts. The new regulation was part of the government's continuing cam-

## SSS SET TO COVER ALL JEEP DRIVERS

QUEZON CITY — The Social Security System (SSS) will launch a drive to step up the security coverage of jeepney drivers beginning Dec. 15, the

## US President, party given big welcome

MANILA — President Ford, on the third and final stop of his 38,643 kilometer Asian odyssey, arrived in Manila yesterday for two rounds of talks with President Marcos, particularly on the future of American military bases in the Philippines and Philippine-American trade relations.

Ford appeared brisk and well-rested from a 3 1/2 hour flight from Jakarta where he pledged after a 19-hour stopover a "substantial aid" to support Indonesia's economic

international Airport at 3:54 p.m. But the drizzle disappeared and the sun appeared from flecks of blue in the hazy sky at the beginning of colorful airport sites

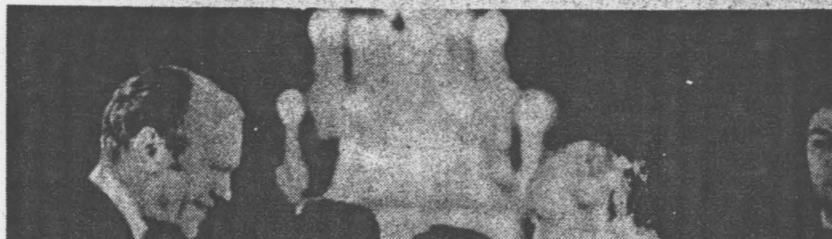
THE  
TRIB  
25c  
ONLY

## \$20-M LOAN DUE FOR RP SHIPPING

MANILA — The International Bank for Reconstruction and Development (IBRD) has approved another \$20 million loan (about P150 million) for the Philippine ship-

*'Expanded dialogue' soon*

# Continuing 'substantial' aid to Indonesia pledged by Ford



JAKARTA, Indonesia — President Ford Saturday wound up a colorful visit to Indonesia with promise of continued development aid and more consultation and

Malacanang Palace where the Fords are staying, the other Sunday aboard the Presidential yacht.

but limited, use by US forces.

Ford's Indonesian

*On anniversary of 'Day of Infamy'*

## Ford to visit Pearl Harbor

PEARL HARBOR, Hawaii — The commander-in-chief of America's military might plans to step aboard the concrete memorial

machine their genius had built and named "Magic."

"Magic" enabled the Americans to listen to all the Japanese conversations by radio, broke

## The President's week

**Monday, Dec. 1:**

Malacanang announced that President and Mrs. Marcos will lead the official welcoming party who will receive US President Ford and party at the Manila International Airport on Saturday, Dec. 6.

The other members of the welcoming party are Foreign Secretary Carlos P. Romulo, Supreme Court Justice

help of the government, could implement the reforms.

"The triumph of the New Society will be meaningless without the successful implementation of land reform," he said.

**Tuesday, Dec. 2:**

President Marcos directed Presidential Executive Assistant Jacobo Clave to take over the

and comprehensive long-term plans to ensure a national approach to hospital development. Among others, it will provide assistance in securing financing for private hospitals through government or private banking institutions and to extend technological assistance and create a favorable climate for the expansion of domestic and foreign

**FM...**

*(From page 1)*

was met by President and Mrs. Marcos and high-ranking government officials.

Army guns boomed out a 21-gun salute and hundreds of schoolchildren, garbed in pastel-colored costumes sang and danced their welcome for the fourth U.S. president to visit the country since America relinquished its colonial rule over the archipelago in 1946.

On his arrival, Ford



*PRESIDENT AND MRS. MARCOS led the nation in welcoming President and Mrs. Gerald Ford of the United States who are state guests of the*

Unseasonably  
Warm

Clear and cool tonight,  
low in 40s. Fair and  
mild tomorrow, high in  
60s. Details B-4.

*Star*  
**The Washington Star**

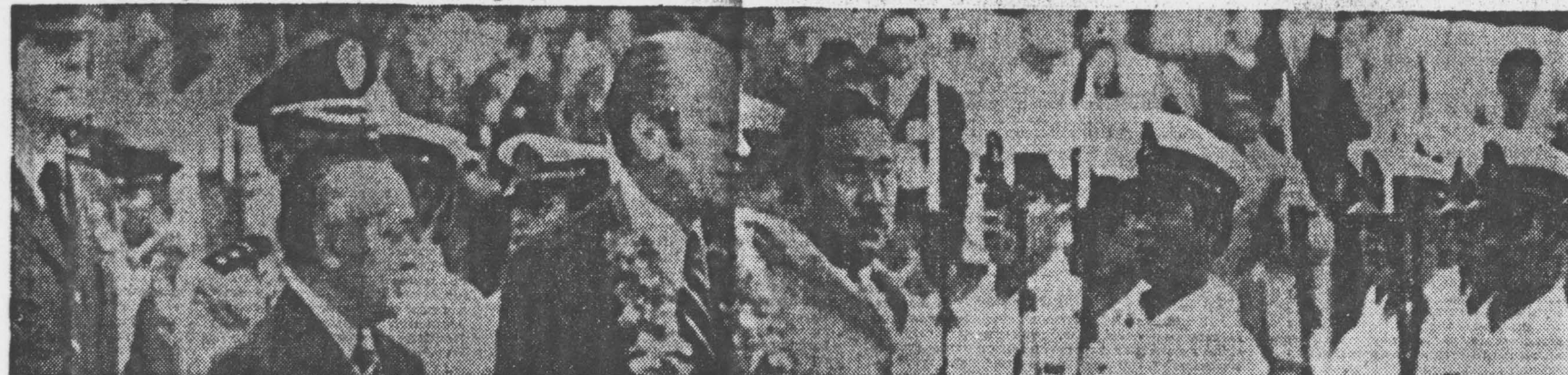
**HOME  
FINAL**

123rd Year. No. 339

Copyright © 1975  
The Evening Star Newspaper Co.

★ WASHINGTON, D.C., FRIDAY, DECEMBER 5, 1975

Phone (202) 484-5000 CIRCULATION 484-3000 15 Cents On Newsstand  
CLASSIFIED 484-6000



President Ford and Indonesian President Suharto review the honor guard after Ford's arrival in Jakarta today.

—Associated Press



Mrs. Ford and Mrs. Suharto walk together after the airport ceremonies.

—Associated Press

# Ford Links U.S. Progress, Prosperity to Pacific Region

By Henry S. Bradsher  
Washington Star Staff Writer

Taiwan Snags U.S.-China Ties.  
Page A-18.

JAKARTA — On an overnight stop in Indonesia after his visit to China, President Ford said tonight that the United States remains firmly com-

on tomorrow to the Philippines. The President was greeted by

ic relations precluded turning out any greeting crowds, but this fifth-most-populous nation produced tens of thousands of smiling, cheering greeters.

Ford is scheduled to have a two-

"The United States regards itself as a Pacific nation," Ford said. "No area of the world is more important to us than Asia, and U.S. prosperity and progress is linked to the region.

In his welcoming toast, Suharto

Suharto seemed to be referring to apprehension here that a united Vietnam will turn its attention to captured American weapons to foster Communist revolutions in other regional nations.

OTHER U.S. officials had said earlier there are no problems in relations between the two countries, which need to be dealt with on this visit. Instead, Ford came here to let Indonesia know of U.S. interest, to

*Wash. Star, 12/7/75*

# Ford Cheered As Best Ally

By Henry S. Bradsher  
Washington Star Staff Writer

MANILA — With dancers in regional dress and crowds lined up for more than seven miles, Filipinos gave Gerald R. Ford a gigantic welcome here yesterday as the president of "our strongest and most dependable ally."

President Ferdinand E. Marcos

Said the President: "An exhilarating, unbelievable experience."

THE BASES have been under American sovereignty since independence was granted this former U.S. territory in 1946, but the two presidents agreed that negotiations "should be conducted in clear recognition of Philippines sovereignty" over them.

# Los Angeles Times

LARGEST CIRCULATION IN THE WEST, 1,037,963, DAILY, 1,244,713 SUNDAY

TS—PART ONE 546 PAGES

SUNDAY MORNING, DECEMBER 7, 1975.



**ALL SMILES**—President Ford and President Marcos laugh as their wives share pleasantries in reception line at Presidential Palace in Manila. Standing behind Mrs. Ford is daughter Susan.

AP Wirephoto

# PHILIPPINES



# POST REPORT

JUNE 1975

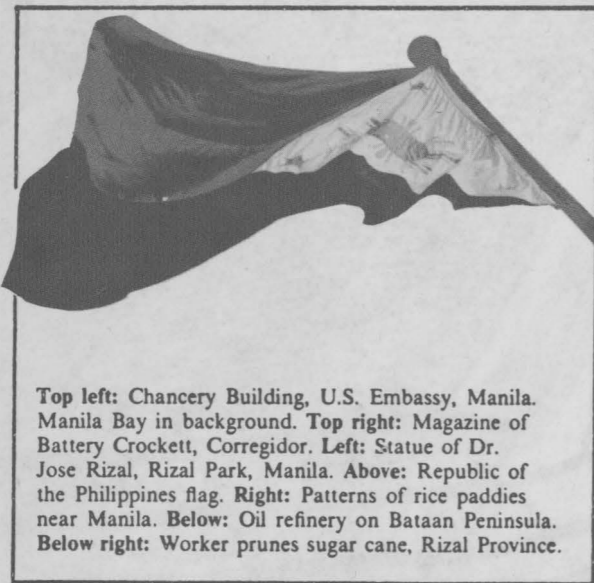




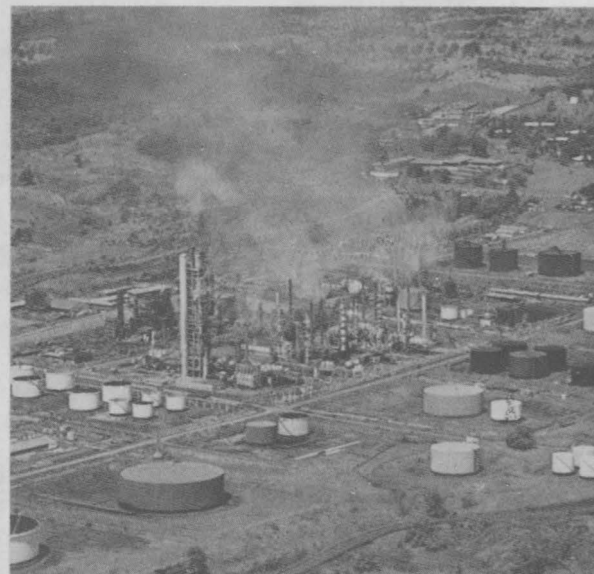
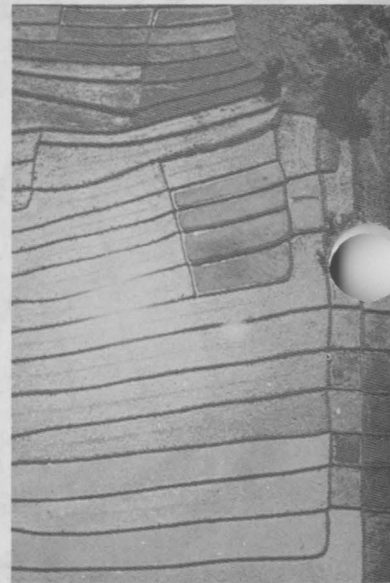
**THE  
PHILIPPINES  
POST REPORT**

JUNE 1975





Top left: Chancery Building, U.S. Embassy, Manila. Manila Bay in background. Top right: Magazine of Battery Crockett, Corregidor. Left: Statue of Dr. Jose Rizal, Rizal Park, Manila. Above: Republic of the Philippines flag. Right: Patterns of rice paddies near Manila. Below: Oil refinery on Bataan Peninsula. Below right: Worker prunes sugar cane, Rizal Province.



# POST REPORT/REPUBLIC OF THE PHILIPPINES/1975

Your assignment to the Philippines brings you to an Asian country which bears the imprint of approximately 50 years of American rule, as well as almost 400 years of Spanish rule. Like the United States, the Philippines has been a melting pot. The dominant racial stock is Malay, with Chinese, Americans and Spaniards constituting the largest alien minorities today. The country's desire and effort to establish its own national identity, culture and position in the world; its traditional history of friendship with the United States strengthened as our ally during World War II; and its political and strategic importance in Asia, offer ties, interests, and challenges unique among those found at any other foreign post. This is the official post report prepared by the post. Any other information you receive concerning the facts as set forth herewith is to be regarded as unofficial information.

## CONTENTS

### PART I—THE HOST COUNTRY Page 5

- Area, Geography, Climate
- Population
- Public Institutions
- Arts, Science, and Education
- Commerce and Industry
- Transportation
- Communications
- Health and Medicine

### PART II—THE EMBASSY Page 16

- Description of Post City
- The Post and Its Administration
- Life at the Post

### PART III—OTHER POSTS OR OFFICES WITHIN THE HOST COUNTRY Page 42

- Post City
- The Post and Its Administration
- Life at the Post

### PART IV—NOTES FOR TRAVELERS Page 61

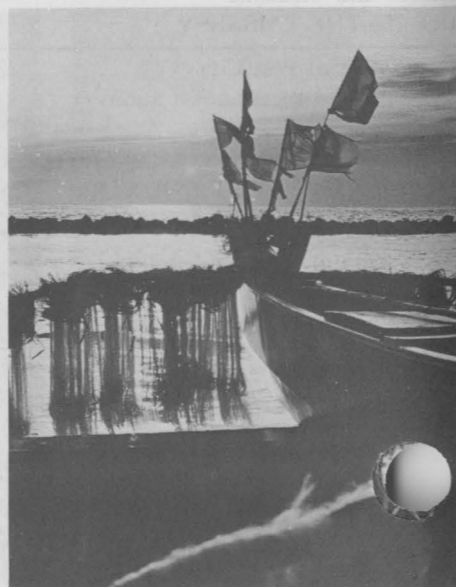
- Getting to the Post
- Customs, Duties, and Passage
- Firearms and Ammunition
- Currency, Banking, and Weights and Measures
- Taxes, Excises, Exchange Finance
- and Sale of Personal Property
- Recommended Reading and Viewing
- Local Holidays

Automobiles .....	9-11
Banking and money .....	63-64
Churches .....	29
Clothing .....	25-26-27
Men .....	25-46-54
Women .....	26-46-54
Children .....	27-47-55
Education .....	29-30
Electricity .....	23
Food .....	23
Housing .....	20
Innoculations .....	15
Language .....	6
Mail .....	12-13
Medical facilities .....	13-14
Office locations .....	18
Office hours .....	19-20
Pets .....	62-63
Preparation for trip .....	61-62
Protocol .....	40
Shipment of household effects .....	62
Social functions & recreation .....	33-36-38-39-40
Transportation—local .....	9
Travel .....	61
Tourist spots .....	36-38
Visas .....	41-63

Cover: A lovely Filipina welcomes you with a lei of sampaguita, the national flower of the Philippines.



Clockwise from above: Sunset near Baguio; Sunset in a fishing village; Main entrance to University of the Philippines, Quezon City; aerial view of Makati, financial seat of the Philippines; Rice paddies, growing the Philippines' staple food; Quezon Blvd., Manila's busiest thoroughfare.



## THE HOST COUNTRY

### Area, Geography and Climate

THE PHILIPPINES CONSISTS of approximately 7,100 islands, of which only 880 are inhabited. The two major islands are Luzon to the north and Mindanao to the south. These and the central Visayas group are represented by the three stars in the Philippine flag.

Though generally mountainous, the country has extensive fertile coastal and central plains and rolling uplands. Large rich valleys traversed by big rivers lie between mountain ranges. The rugged and irregular coasts provide numerous harbors of all sizes. The coastline is officially calculated to be approximately 21,600 miles long. In comparison, the coastline of the continental United States is approximately 12,000 miles long. There are many volcanoes in the Philippines, a number of them active. Several mountain peaks reach almost 10,000 feet.

The Philippines ranks fifth among countries of the world in the ratio of forests to tableland areas. While there are fewer flowers than normally expected in the Manila area, there is a wealth of interesting plant life throughout the Islands. The sampaguita, a small white multi-petaled and exceedingly fragrant flower, is the national flower. Orchids grow in abundance - some one thousand species are known.

Many interesting species of animals and birds are found in the Philippine forests and mountain vastnesses. The carabao or water buffalo is indigenous. Several varieties of birds are exported to the United States, and large shipments of monkeys are made to U.S. zoos and research laboratories.

The Philippine climate is hot and humid for the most part. Manila, the largest city in the country, is located at sea level on the Island of Luzon, 15 degrees north of the equator. There are three seasons: the hot, dry season, from March through May, terminated usually by violent thunderstorms and torrential rains; the rainy season from June into November, during which time rain may be expected almost every day during July, August

and September; and the cool, dry season from November to February. Manila has an annual mean temperature of 80.2 degrees F., with the average monthly maximum temperature ranging from 86.2 to 93 degrees F., and the monthly minimum temperature ranging from 69.4 to 75.7 degrees F. Average relative humidity ranges from 69% in April to 84% in August and September.

Typhoons are common in the Philippines during the rainy season. Manila sometimes feels the full impact of typhoons, although more often they miss the city because it is sheltered by mountains and the centers of the storms pass north or south.

Earth tremors occur frequently, usually of minor intensity. However, in 1969 and 1970 fairly heavy earthquakes hit Manila, with some loss of life and damage.

During the rainy season streets and yards are often flooded, with resulting delays in getting to and from homes and offices, and damage to automobiles.

Baguio (the so-called summer capital of the Philippines) is located 155 miles from Manila, 16 degrees north of the equator, at an altitude of 4,600 feet above sea level. The climate varies between the dry and the very wet seasons, each lasting about six months. The dry season begins in December and lasts until June. Temperatures vary from the low 80's in the daytime to the 50's and 60's at night. The dry season ends in June when the rains, which are slight in May, become heavy. Baguio averages 176 inches of rainfall per year, with a record fall of 355 inches and a low of 99 inches. July and August are the rainiest months, averaging 42 inches each. The rains begin tapering off in September and are light in October and November. Typhoons bring high winds and heavy rains, causing landslides on the two roads connecting the city with the outside world. Earth tremors are sometimes felt.

Cebu lies about 10 degrees north of the equator and is 350 air miles from Manila. The climate is hot and humid during the entire year with rainfall less evenly distributed by season than it is in Manila. The hottest weather is generally from March through June. Nights are usually pleasant from August through February and the daytime high temperature ranges between

85-94 degrees F. Cebu is considered to be just off the typhoon belt but has occasionally been hit by storms of considerable force. In the recent past, Cebu has been struck by one extremely short medium-intensity earthquake and from time to time tremors are felt.

Davao is located 7 degrees north of the equator, approximately 600 air miles south-east of Manila on the island of Mindanao. The average annual rainfall is about 80 inches a year, which is rather evenly distributed. The mean daily maximum temperature is 89 degrees F. and mean daily minimum temperature is 73 degrees F. Davao is outside the typhoon belt.

The generally warm, humid climate of the cities mentioned above, particularly during the rainy season, can result in mildew damage. Normally, if rooms are air-conditioned there is no serious problem; however, furniture, rugs, cameras, books, etc. must be watched carefully for mildew, musty odors and molds. A home-type dehumidifier is useful in storage rooms, particularly during the wet season. There are the usual tropical insects. Small lizards which live on ceilings and walls are very common but they are "friends" since they eat mosquitoes and other insects and do no damage or harm. The mosquitoes in the Manila, Baguio, Cebu and Davao areas are of the non-malarial, nuisance variety, but anyone visiting rural areas overnight should consult the Embassy Dispensary about the need for antimalarial precautions.

Fungus and ear infections, mainly due to swimming, are common in the hot, humid climate. There is also the inevitable increase in number of respiratory diseases as the rainy season closes and cooler weather begins.

---

## Population

---

THE PHILIPPINES IS A COUNTRY of 40 million people of varying races, traditions, cultures and religious beliefs who speak 87 different dialects. Culturally, the people are composed of three main groups: The Christian group, consisting of over 90% of

the population, who inhabit the lowlands; the Muslims, composed of approximately 4% of the population, in the southern island of Mindanao and Sulu Archipelago; the third group, loosely called pagan, is composed of the mountain people - Igorot, Negrito, Mangyan, etc. - living in the wild mountain interiors of the Islands. Many of the latter group are still largely untouched by civilization.

Approximately 80% of the people adhere to the Roman Catholic faith. The remaining 10% of the Christian element belong to the Philippine Independent Church (Aglipayan) and various Protestant faiths.

Traditionally, Filipinos are noted for their friendliness and hospitality. The past few years have witnessed a growing spirit of nationalism and some expression of anti-Americanism, particularly in Manila. However, the vast majority of Filipinos still welcome American friendship and personal relationships develop more easily than in most Asian nations.

The Filipinos have an in-born reverence for their women. The latter enjoy an enviable position, unmatched in other Oriental countries, both at home and in the community. Beneath her modern exterior, the Filipina retains the fundamental virtues and charm for which she has long been renowned. She is intelligent and competent in both domestic and business management and shares equal footing with the Filipino man. Like other Orientals, Filipinos have very strong family ties. They also are fun-loving, with fiestas playing a major role in their lives.

Pilipino (or Tagalog) is the predominant language in the Philippines, while Pilipino, English and Spanish are the official languages. English is used universally in Manila as the language of business, commerce and higher education. The leading newspapers, magazines and many TV and radio programs are in English. Generally, however, English as spoken by the Filipino is as different from American English as the latter is from British English. Accent tends to be flattened out in the Spanish style with emphasis tending to come on the latter syllable. Thus some adjustment becomes necessary to attune the American ear to the Filipino manner of speaking with equivalent difficulty to be expected on the Filipino's part in understanding the American accent.

The use of Pilipino is increasing in schools and communications media. Nevertheless, American personnel have no real language problems except, perhaps, when traveling in the most isolated areas of the country.

---

## Public Institutions

---

THE PHILIPPINES IS A REPUBLIC. Being unitary and not federal, the central government exercises supervision over the entire country. For administrative control, the country is divided into provinces, sub-provinces and cities. Provinces are divided into municipalities or municipal districts, which are in turn subdivided into barrios. At present there are: 71 provinces; 3 sub-provinces; 61 cities; 1,433 municipalities; 21 municipal districts and 33,925 barrios.

The Philippines adopted a new Constitution on January 17, 1973 in place of the 1935 Constitution, which was prepared during the Commonwealth Period. While the Philippines had a presidential form of government under the former Constitution, the new charter provides for a parliamentary system. Executive power is vested in a Prime Minister and, to a much lesser degree, in a President, both chosen by majority vote from among the members of a unicameral, popularly-elected National Assembly. However, during the present period of transition between the two Constitutions, the President exercises the powers of Chief Executive under both charters. At the present time, there is no functioning legislative body. Judicial power is vested in a 15-member Supreme Court and lower courts.

While there have been no elections since November, 1971, three national referenda were called in January and July of 1973 and in February of 1975 in which Filipinos aged 15 and above, gathering at local community meetings known as Citizens Assemblies or barangays, were asked to pass on various national policy questions. The second and third of these referenda approved the continuation of Pres. Marcos in office and the policies followed by his government under martial law, which was declared on September 21, 1972.

Each province is headed by a governor,

and cities and municipalities by mayors. Local governments are not as autonomous as are American states but instead are under the administrative control of the Chief Executive. Many social and philanthropic organizations found in the United States have counterparts in the Philippines, such as the Philippine National Red Cross, Community Chest, American Legion, Rotary International and the Boy and Girl Scouts.

---

## Arts, Science and Education

---

THERE ARE SOME 150,000 TEACHERS and professors in the Philippines for the 30,000 plus public primary, intermediate, secondary and collegiate institutions in the country - among them the University of the Philippines, the University of Santo Tomas and other nationally chartered centers of higher learning. The scope of private education is impressive: some 24 universities, including both religious-supported and non-sectarian, plus 351 colleges. It is sometimes argued that some schools fall below the standards of learning elsewhere. But the mere presence of so many schools is an achievement which few other developing nations can match and it is part of the Filipino's concept of democracy that such a system must have an educated electorate. Until recent years, much of the intellectual and cultural life of the country revolved around the universities. Today, libraries and museums have been restored, and concert halls and book shops and art galleries have expanded and there has been some decentralization of these centers.

As the only predominantly Christian country in the Far East, the art world of the Philippines is for the most part Occidental, rather than Oriental and Western ideas and values are predominant. The country has an active and diversified art world. There are folk dance groups as well as western modern and classical ballet groups, two symphony orchestras give concerts during the season; drama clubs (several of them open to international membership) present performances throughout the year; there are exciting and venturesome examples of modern architecture, particularly as represented in some new buildings in the Manila area and the Cultural Center; there are talented writers, some of whom have been published abroad; and painters and sculptors representing all schools of art.

One of the interesting new developments in the art world is the recent archaeological finds of Sung and Ming porcelains and trade pottery from China, Thailand, and Vietnam. Such finds are not only adding splendid pieces to art and museum collections throughout the world, but also form the basis for new information that may well alter historic concepts concerning Asia and the relationships among the various countries. The National Museum in Manila is a major repository for artifacts taken from the various excavations.

There is a large and active scientific community in the Philippines. The National Science Development Board has under its jurisdiction the National Institute of Science and Technology, the Atomic Energy Commission, the Coconut Research Institute, and the Textile Research Institute. The Atomic Energy Center operates a one-megawatt research reactor, producing isotopes for medical use and carrying on research in other areas. Philippine scientists work with men from all over the world in the International Rice Research Institute in Los Baños which has developed new strains of "miracle rice". Another important international project is the country's affiliation with INTELSAT through two PHILCOMSAT satellite earth stations. These installations at Tanay make it possible for the Philippines to carry direct telecasts of such events as the moon exploration and other events of worldwide interest.

#### Commerce and Industry

THE PHILIPPINE ECONOMY IS DEVELOPING rapidly but continues to exhibit many traditional characteristics. Agriculture gives employment to almost one-half of the gainfully employed. Additional persons earn their living in the related activities of processing, transportation and trade in agricultural produce. Efforts are being made to encourage industrial development and new factories and mills are springing up in and around Manila where industry is heavily concentrated. In the south, Iligan City with its hydro-electric dam, Davao and Cebu are also developing into industrial areas.

The chief products of the Philippines continue to be primary goods, with agricultural products leading the way. Key crops include

rice and corn for domestic consumption and sugar, coconut products, abaca, pineapple, bananas and forest products such as logs, lumber, plywood and veneer for export. In 1974 this group earned more than US\$1700 million in export earnings. Minerals are the second largest production group, primarily copper and iron ores and concentrates. Mineral exports for 1974 were over US\$400 million and can be expected to increase yearly. A mine near Mindanao began producing nickel in 1975 and will add to mineral export earnings.

Light manufacturing is focused on drugs, furniture, batteries, paint, shoes, cigarettes, appliances, plastics and both cotton and synthetic textiles. Recently, several electronics firms have established plants in the Philippines. Ambitious Philippine development programs are being carried out in rural development, family planning, roads, irrigation and electrical power which give promise of creating advances over the next decade.

The Philippine economy is dominated by the private sector, which accounts for more than 80 percent of investment and over 75 percent of gross national product. However, the economic agencies of the government play a central role in determining the policy framework within which the private sector functions as well as the principal directions of the economy's development. The public sector is also charged with responsibility for much needed economic infrastructures, such as roads, port and air terminal facilities, and housing. Economic nationalism, often directed at Americans, is a potent force in the Philippines and the policies of the Philippine government reflect this sentiment from time to time. The Philippine private sector is heavily controlled by wealthy family groups which are increasingly adopting modern management practices. Americans are the principally foreign investors in the Philippines although Japanese investment has recently increased rapidly.

With respect to the labor sector, the 14 million-strong labor force is receiving increasing attention from the government. A new Labor Code which went into effect in 1974, brought about a much-needed modernization of labor laws. However, a continuing high level of unemployment and inflationary pressures constitute major problems for the working man.

Only some 10% of the labor force is organized and the fragmentation of the trade union movement has limited its power. A re-structuring or unification of labor is currently underway, and 1975 may well bring important developments in this endeavor.

#### Transportation

MODES OF CITY TRANSPORTATION are varied; however, the taxi is most commonly used by personnel not having a personally-owned vehicle.

There are many companies and individual owners and operators who provide taxicab service throughout Manila and the suburbs. For the most part, small European and Japanese cars are used. Many taxis are old, dirty, poorly maintained and driven recklessly. Taxis can be hailed on the street or called by telephone. All reputable taxis have meters and fares are reasonable, costing about ₱3.00 (approximately \$0.45) for a trip of two kilometers or 1½ mile. A small tip is usually given.

Bus service is available throughout the city and suburban areas and fares are cheap and schedules frequent. However, buses are seldom used by American personnel for they are not considered either safe or comfortable according to Stateside standards. There is often less space between seats than is provided in U.S. manufactured buses and many still have wooden seats and unglazed windows. They, too, are driven recklessly and drivers often race from one street corner to another vying for passengers (there are no regular loading or unloading points). They also are poorly maintained with infrequent inspections. Not all companies carry liability insurance.

Jeepneys, which are vehicles built on jeep frames, are plentiful in Manila and suburban areas. They carry from six to eleven persons in space possibly large enough for five Americans. Fare is nominal to most points in Manila; however, this means of transportation cannot be relied on to follow regular routes. Most jeepneys are provided with curtains on the sides but one can expect to get wet when it rains. Jeepneys are preferable to buses and are used to some extent by Embassy personnel.

For an occasional "fun trip," there is

the horsedrawn "carretela" or "calesa." If a newcomer wants to ride in one, it is recommended that he first bargain with the driver (cochero) to set the price of the trip. These horsedrawn vehicles are banned from the main thoroughfares of Manila since they constitute a serious traffic hazard for motorized vehicles.

There are two major highways leading out of Manila, one going north to Angeles (Clark Air Base) and Baguio and one going south. Though they have four-lane sections near Manila, mainly they are two-lane highways, for the most part clogged with incoming and outgoing traffic. Because of the limited number and often poor conditions of roads, lack of hotel, restaurant, and sanitary facilities, and the undesirability of night driving, one is restricted in travels by automobile. Train travel is not recommended due to the unsafe condition of roadbeds, substandard cleanliness of cars and frequent pilferage of belongings. Although it is also possible to go to almost any point on Luzon Island by bus, few Americans use them for the same reasons as given for Manila city buses. The Philippine Department of Tourism does have air-conditioned buses traveling regularly between Manila and Baguio which afford comfortable transportation. The Philippine Air Lines (PAL) makes scheduled flights to cities and important towns throughout the Philippines and it is possible to make a one-day round-trip to some places. Interisland ships sail almost daily with calls at major ports within the country. While the accommodations cannot be considered first class, personnel traveling on the ships do find them adventuresome and enjoyable.

#### Automobiles

Everyone who is accustomed to having his own automobile will want to bring one to Manila. Left-handed drive automobiles are used. Air-conditioning of automobiles has become more general and is a decided comfort in Manila's alternate high humidity and annoying dust, particularly for the longer trips to other parts of Luzon. Consideration should also be given to having the car undercoated and otherwise tropicalized. Many car owners feel that heavy-duty springs and shock absorbers are good investments. It is usually difficult and expensive to obtain repair services for automatic transmissions and power features.



Left: Manila International Airport. Below: Epifanio de los Santos Avenue, a six-lane, north-south circumferential highway around metropolitan Manila.



Personnel may wish to consider bringing a spare muffler, tail pipe, fan belts and radiator hoses to post for the heat and humidity accelerate the deterioration of those particular parts; touch-up paint and chrome protective lacquer also are desirable items to have. Most standard makes of autos are available locally, but at much higher prices than in the U.S.

The high humidity and the poor condition of the streets and roads increase the rate of deterioration of automobiles. Repair facilities are available for most U.S. and European manufactured cars with prices comparing favorably to those in the United States. Spare parts and tires are available at slightly higher prices than in the U.S. Usually tires, batteries, and accessories, and occasionally, some spare parts can be obtained at post exchanges. When available, prices are reasonable. Regular and highest gasoline is available at the Seafront station and on the local market at somewhat higher prices than in most U.S. areas.

U.S. Mission personnel in the Philippines are allowed to import and own one vehicle duty free. Vehicle registration fees vary for type of car, with personnel on the diplomatic list being exempt from paying the fees. Valid U.S. or other country driving licenses are required to order to obtain a Philippine driving license. Under Mission regulations, vehicles must be insured for a minimum of \$5,000 public liability and \$5,000 property damage, or \$10,000 combined third party liability, or the peso equivalent. Many people believe it is advantageous to obtain the insurance locally after arrival in Manila because of the convenience of using local agencies in processing claims and handling accidents. Adequate automobile insurance costs from \$100 to \$250 per year. It is recommended that marine insurance coverage be obtained for vehicles being shipped to Manila.

Personnel planning to bring a car to Manila should bear in mind that luxury cars are not appropriate to this post nor are those which are conspicuous by the sport design, color, or other features. Automobiles purchased for shipment to the Philippines should be low to medium priced, unostentatious, equipped with air-conditioning and preferably no more than two to three years old. Six-cylinder, four door autos have better resale value than eights. Subse-

quent sale of vehicles, except to other Americans with duty-free privileges, must be approved in advance; normally the sale of a car on the local market will not be approved sooner than 90 days before an employee departs on home leave or transfer.

Driving in the Philippines, as in most places where traffic is highly congested, requires considerable care and patience to avoid accidents. Many persons find it desirable to employ a full-time chauffeur for this reason and to ensure the car is not left unattended while away from home. Danger of pilferage or theft is ever present.

#### Regional Transportation

Travel to practically any part of the world by air or surface can be arranged from Manila.

Airlines connecting Manila with other points in the Far East include Air France, China Airlines, Cathay Pacific, KLM, Northwest Orient, Pakistan International, Philippine Airlines, Pan American, Qantas, Sabena Airlines, Scandinavian Airlines, Thai Airways International, Japan Air Lines, and Air Egypt.

Three times a week schedules are maintained by Pan American and Northwest to the United States.

American-Flag Cargo Liners, with 12-passenger capacity, have trans-Pacific sailings weekly from Manila to the west coast of the United States via Hong Kong, Taiwan and Japan ports.

#### Communications

##### Telecommunications

Although local telephone service is available in the Philippines, it is far from reliable. Storms and even rain showers disrupt the service and telephone instruments frequently are unusable for no apparent reason; bells ring with no one on the line; nuisance calls and wrong numbers are daily occurrences; frequently repairs take an inordinate amount of time. When obtaining a telephone, subscribers must make a P100 deposit which is refundable by the Embassy. The waiting period for telephone service ranges from six weeks to

six months or longer. The so-called "diplomatic priority" produces meaningful results only for the most senior Mission officials. The monthly charge for a two-party line is ₱31.21, with an additional instrument increasing that charge to ₱49.21. Single-party lines are most difficult to obtain and in some areas are completely unavailable.

Long distance service to the United States is excellent provided one's telephone is functioning properly. Weekday charges are the equivalent of \$12 for three minutes; on Sundays the rate is \$9 for three minutes. Worldwide connections are scheduled for certain hours of the day. Although far from dependable, service between Manila and all major Philippine cities also is available.

Worldwide telegraph and cable service is provided by several companies, including RCA and Globe Mackay. Cables sent to the U.S. cost approximately \$.34 per word for an ordinary telegram and \$3.74 for a night letter not exceeding 22 words, at the appropriate exchange rate.

#### Mail and Pouch

APO facilities to and from the United States and to other APO's and FPO's are available for the exclusive use of all agencies and officials of the U.S. Government, members of the U.S. Armed Forces and American personnel (and their dependents) who hold official positions in the Philippines. Mail leaves for and arrives from the United States via American flag carriers seven days a week. Transit time is usually three to five days. Air mail rates are the same as domestic U.S. rates, i.e. \$0.13 per ounce. APO parcel post services are available. Parcels may be sent airmail, PAL and SAM. Merchandise can be mailed to the U.S., its territories and possessions, any APO/FPO address and foreign country members of the Postal Union. Merchandise mailed to the U.S. or its territories thru the APO is subject to customs inspection and payment of customs duty, if any.

#### Parcels Mailed from APO to U.S.:

##### Air Parcel Post:

Weight limit	70 lbs
Size limit	100" length and girth combined

#### Transit Time

3-5 days

#### PAL

Weight limit	30 lbs
Size limit	60" length and girth combined

#### Transit Time

5-10 days

#### SAM

Weight & Size limit	(same as Air Parcel Post)
---------------------	---------------------------

#### Transit Time

5-10 days

Postage rates are the same as U.S. domestic computed on proper postal zone.

SAM is flown to postal gateways (SEA/SF) and then transported by surface to end destination.

PAL is airlifted all the way from the sender to addressee.

For personnel assigned to the Embassy, mail should be addressed as follows: "Mr. John Doe (1st line); American Embassy (Office) (2nd line); APO San Francisco 96528 (3rd line)". To insure prompt delivery of mail, personnel authorized APO privileges and not employed by the Department of State should show their address as follows: "Mr. John Doe (1st line); Name of Agency (or office) (2nd line); APO San Francisco 96528 (3rd line)".

Employees assigned to Baguio have access to APO 96298 and their mailing address is as follows: "Mr. John Doe (1st line); Voice of America (2nd line); APO San Francisco 96298 (3rd line)." Personnel assigned to Cebu and Davao should have their mail addressed as follows: "Mr. John Doe (1st line); American Consulate (or USIS) (2nd line); APO San Francisco 96528 (3rd line). The Embassy picks up mail from the APO in Manila for personnel in Cebu and Davao and forwards the same each working day via Department of State facilities. The U.S. postal service will insure mail addressed to the Philippine Post Office up to \$165.

The international mail address is American Embassy, Manila, Philippines; For USAID, American Embassy, USAID, Manila, Philippines; and for USIS and other agencies, American Embassy, (Agency), Manila, Philippines. The use of the APO is a privilege. Acting as a third party for unauthorized personnel is a violation of customs and postal regulations.

#### Radio and TV

Radio and Television in the Philippines is very similar to that found in the U.S. It is commercial and highly competitive. Many of the programs are in English as well as the vernacular (in the Manila area--Tagalog/Pilipino). Several of the more popular U.S. TV shows are carried on Philippine TV. Locally produced programs, such as news, variety, and drama are in English or Tagalog. Movies are also popular on TV, both in English and Tagalog.

There are at present 196 radio stations in the Philippines, with 34 in the Greater Manila area. Radio stations carry news, music, and commercials. Music runs from well known classics to rock. Eight Manila stations broadcast FM/stereo, featuring pop and light classics. While radio/TV stations carry items about international and U.S. news, these reports are inclined to be sketchy and lacking in depth.

The American Forces Philippine Network (AFPN), a member of the American Forces Radio and Television Service, operates radio/TV stations at the major U.S. military installations. Normally, however, their programs can only be seen and heard in the immediate vicinity of their locations. They cannot be picked up in Manila. For those with good shortwave receivers, it is possible to pick up VOA, the BBC, Radio Australia, etc. For those desiring international and/or U.S. news, a shortwave set is recommended.

There are presently 17 TV stations in the Philippines, with five channels in the Manila area. Some of the stations are color equipped. Electrical power in the Philippines is 60 cycle, 110 to 220 volts. TV Channel allocations are the same as those in the U.S., therefore, American designed TV sets can be used without any modifications, excepting where it is necessary to supply correct voltage to the set. It may be necessary to have a small step-up or step-down trans-

former for TV sets as well as other electrical appliances as homes may have only 110 volts, or only 220 volts, or a mix of both. Be sure to check out the voltage on any wall outlet before plugging in any appliance, lamp, etc.

Radio and TV sets can be purchased at the U.S. military facilities and prices are generally somewhat lower than in the U.S. However, the latest models are not always available and the selection may be somewhat limited.

Motion pictures are very popular in the Philippines. There are several excellent movie houses in Manila--comfortable, roomy, air-conditioned, and reasonable. The latest American and international films are shown. American movies are very popular and they are not sub-titled or dubbed. Reservations are not needed at movie houses, and except for Sundays and Philippine holidays, seating usually presents no serious problem.

#### Newspapers, Magazines, and Technical Journals

Five daily English-language newspapers, both morning and evening editions, are published in Manila. They are flown to the major cities for same-day delivery. Weekly airmail copies of Time and Newsweek are available by subscription or direct purchase at newsstands. Stars and Stripes may be obtained through U.S. Government installations with home delivery also available. Most American magazines - four to six weeks late-and paperbound books can be purchased at the Stars and Stripes book store in the Seafront Compound, at post exchanges, or at local newsstands, but the supply is limited. To ensure regular receipt of favorite magazines it is better to subscribe to them using the APO address.

#### Health and Medicine

##### Medical Facilities

Manila - The Embassy Dispensary, located in the Chancery Compound, is staffed by an American Medical Officer, a Filipina contract physician, three Filipina nurses, a laboratory technician, an X-ray technician and two clerks. Additionally, a Navy Chief Hospital Corpsman supplements the staff devoting much of his time to performing the administrative duties of the office. Because

of its small staff and limited facilities, the Dispensary is primarily concerned with preventive medicine for American personnel and their dependents and for local employees, providing physical examinations, immunization and X-ray survey programs, and advice and assistance on medical problems. The Veterans Administration maintains its own dispensary and clinic which provides medical services to its employees. AID and many other U.S. agencies are provided medical services at the Embassy's dispensary under the Shared Administrative Services agreement.

For most types of sickness and medical problems, the medical facilities in the Manila area are considered average. Makati Medical Center, a 300-bed hospital, was opened in November 1968. It has modern equipment and facilities comparable to a Medical Center in the U.S. The Center has gradually become the hospital utilized extensively by U.S. government personnel; many of its staff physicians are U.S. trained. Another frequently used hospital is the Manila Sanitarium and Hospital, a Seventh Day Adventist facility with several American doctors on its staff and 17 private rooms, a number of which are air-conditioned. Other good hospitals used by Americans include Manila Medical Center; Manila Doctor's Hospital; and St. Luke's Hospital in Quezon City. As a large number of Filipino doctors and nurses receive advance training in the United States, it is possible to find almost any type of specialist needed; a few excellent expatriate doctors practice in Manila. The Embassy Medical Officer can be of assistance in recommending private doctors.

In addition to Philippine medical centers, a 225 bed hospital was opened at Clark Air Force Base in 1964. It has facilities for treating practically every type of disease. In certain cases, American employees and their dependents are referred by the Dispensary for diagnostic or specialized care, while in all cases the hospital may be used on an optional basis. Appointments at the hospital must be made through the Dispensary.

Despite the availability of U.S. trained Filipino doctors and dentists in Manila, it is recommended that when possible dental work, eye examinations, and medical problems be taken care of before departure for Manila. It is suggested that people who wear glasses bring an extra pair along. Because the sun is very bright here, many people use sun-

glasses, and one may desire to obtain a pair of prescription sunglasses in the U.S. Non-prescription sunglasses are available at post exchanges.

After working hours, use of the emergency room at Makati Medical Center is the usual means of obtaining the most prompt medical attention. Most local doctors will make arrangements to meet a patient there for personalized care.

Cebu - There are a number of U.S. trained physicians in Cebu. For most illnesses and emergency medical problems, the facilities are considered adequate. Cebu Doctors Hospital, opened in 1972, comes closest to meeting western standards for cleanliness and equipment and is preferred by most of the American community. Chong Hua and Perpetual Succour Hospitals are also acceptable. Routine dental care is available in Cebu, but orthodontic treatment and oral surgery must be done in Manila or at Clark Field. Medical and dental care at the hospital at Clark Field can be arranged through the Embassy Medical Officer. In serious emergencies air evacuation can be effected in a matter of hours. Those assigned to Cebu who use specific regular medication should make arrangements either with the Embassy Dispensary or their Stateside pharmacy for routine shipments, as drug supplies, while generally adequate, are erratic. The Consulate maintains an emergency supply of some drugs.

Davao - Again, there are several U.S.-trained physicians in Davao who are utilized extensively by the American population of that city. The hospital that comes closest to western standards is Brokenshire Memorial Hospital. It is run under the auspices of the United Church of Christ. Although not having some of the more sophisticated equipment found in most U.S. hospitals, that facility is considered entirely adequate for most medical problems, including emergency surgery for such operations as an appendectomy. For surgical problems of a more serious nature, evacuation to Manila or Clark will be arranged by the Embassy's Medical Officer.

Baguio - In general, common diseases may be treated locally. The two hospitals considered adequate are Notre Dame de Lourdes Hospital and Pines City Doctor's Hospital. If prolonged hospitalization or any major surgery is

required, treatment at nearby Clark Hospital is recommended.

#### Community Health

The following general health advice refers to Manila, but actually applies in much of its content to the entire Philippines. The general level of sanitation in the Philippines is lower in standard than that prevailing in the United States, but is high in comparison with many other countries. An increase in the population of the metropolitan area of Manila since the time of liberation has greatly overtaxed city water supply, sewage and garbage disposal, street cleaning and utilities in general. The Manila water supply is considered generally safe for drinking. However, at times, particularly during the dry season, there is low pressure in the mains and water in certain areas of the city cannot be considered potable. Water supplies at the Chancery, USAID Building and Seafront Compound are potable. Some "villages" have their own deep wells and pumps, and make it a practice to monitor the purity of their water.

There still are some open sewers in Manila, and sanitation practices in the area of waste disposal, food handling, and market sanitation leave much to be desired. Most housing used by Embassy personnel have septic tanks or adequate sewers, as do all U.S. Government-owned buildings; garbage collection is also adequate in most Government-leased quarters. Manila continues its efforts to improve sanitation conditions in the city and to educate its people in health measures. However, the latter has not reached a sufficiently high level or reached enough levels of society to be completely successful. Cockroaches, ants, mosquitoes, fleas, termites, rats, and mice are quite common in the Philippines. They can be controlled through home efforts and use of commercial exterminators. Laws require the reporting of communicable diseases; there are isolation hospitals for treatment of those diseases with mass inoculations against smallpox, cholera, etc., being conducted by the city. Incoming ships and airplanes as well as passengers are subjected to quarantine inspection.

#### Preventive Measures

Occasional gastrointestinal upsets and colds seem to be almost unavoidable.

Through normal precautions and care, it is possible to avoid serious diseases such as cholera, typhoid, amoebiasis, bacillary dysentery and intestinal parasites. Personnel should be vaccinated and/or inoculated against typhoid, tetanus-diphtheria, poliomyelitis and cholera. Susceptible children should be vaccinated against measles. Booster inoculations should be obtained on schedule. Gamma globulin is recommended every 6 months for hepatitis prophylaxis. Tuberculosis is wide-spread in the Philippines and periodic chest x-rays or skin tests are recommended.

While the immediate areas around Manila, Baguio and Cebu City are malaria free, there is malaria in some of the rural underdeveloped areas of the Philippines and personnel traveling there must take malaria prophylaxis. The Dispensary furnishes Aralen for this purpose, and can advise which provinces still carry a risk of malaria. Normal precautions must be taken with regard to eating fresh fruits and vegetables and drinking water. It is wise to eat local produce only after peeling, scrubbing or cooking. Both adults and children should have a diet high in all nutritional values supplemented by the use of vitamins. Normal amounts of salt in the daily diet is desirable. Untreated or unboiled water should not be drunk outside Manila except at U.S. military installations. Boiling for 5 minutes is the recommended method of sterilizing water. "Globaline" or iodine (not Halazone) preparations take about 30 minutes to kill bacteria and work more slowly if the water is cool or dirty. Bottled beverages are plentiful and are safe. In general, it is safer to drink them or hot tea or coffee rather than water in public places. Normally, powdered, recombined, frozen, or evaporated milk purchased through Commissary channels is used. Fresh milk purchased locally is not always considered safe even though pasteurized. Meats from local markets should be well cooked and the freshness of fish determined before eating.

There are many restaurants in Manila patronized by Americans. However, it is not wise to eat raw food, never raw seafood, even at the very best eating places. It is wise to check on the source of dairy products, especially milk, before ordering. Ice is always suspect and it should be remembered that alcohol does not kill bacteria. Children should never be allowed to buy ice cream or food from street peddlers.

It is important that domestic servants have physical examinations prior to employment and stool tests and chest x-rays every year thereafter. The Dispensary will do a yearly chest x-ray on servants for \$1.00 each.

Personnel must remember to avoid over-exertion and excessive fatigue for recovery is not as prompt here as in a temperate climate. Serious sun burns may follow relatively short exposure. Frequent cool showers, air-conditioned rooms, loose clothing and all measures to reduce perspiration are the simplest and best treatment for heat rash. Superficial skin infections are extremely common in the tropics. Even the smallest wound should be treated with a disinfectant and covered with a dressing.

The Embassy Dispensary stocks many drugs which are issued without charge to American personnel and dependents when prescribed by a physician. Most large American drug companies have factories and representatives in Manila and unusual medicines can be obtained locally or ordered from the U.S. Common one-a-day variety vitamins, band aids, first aid supplies and standard medication are usually available in post exchanges. Unless health problems necessitate special medicines or vitamins, it is not necessary to bring them with you.

#### EMPLOYMENT OPPORTUNITIES FOR SPOUSES AND DEPENDENTS

There are not many possibilities for employment of dependents in Manila. However, a roster of spouses interested in employment is maintained and made available to other U.S. Government Agencies looking for personnel. The U.S. Employees' Association, discussed in the following pages, employs spouses as PX Supervisors and Cashiers. In the summer, the Embassy Women's Club organizes a summer camp for children and teen-aged dependents are hired as assistant counselors. Under Philippine Labor Laws dependents usually are not permitted to accept outside employment and attempts to circumvent the laws can jeopardize the dependent's duty free privileges and other exemptions.

## THE EMBASSY

### Description of Post City

MANILA, LOCATED ON THE MAJOR island of Luzon, is a huge, unplanned city, sprawling along the coastal lowlands of the Bay and the sluggish Pasig River. Manila Bay, forming one of the largest and finest landlocked harbors in the Far East, is the outstanding attractive feature of the city. It is rimmed by distant mountains and islands, dotted by ships and frequently flooded by flamboyant sunsets which spread from the western horizons of the Bay through the city to the eastern mountains. Roxas (formerly Dewey) Boulevard, which follows the shoreline for several miles, quickly becomes a familiar landmark. It is lined with modern office buildings, Embassies, hotels, restaurants, the new and beautiful Philippine Cultural Center, apartment houses, etc. It, along with the new and modern commercial and residential areas of suburban Makati, typifies the contrasts which exist in the city.

The architectural styles of the city show the influence of 400 years of Spanish domination, nearly 50 years of American rule, and modern trends developed in buildings erected or reconstructed since World War II.

Greater Manila's population, which includes Quezon City, Pasay City, Caloocan, Makati, Mandaluyong, Parañaque, and San Juan, is 3,500,000. Although the official capital of the Philippines is Quezon City, a 20-minute drive from downtown Manila, its development for that role remains in the planning stages and only a few governmental agencies are located there.

The social habits of people in Manila are Occidental for the most part and the society is cosmopolitan. Western clothes predominate but there is some adherence to local Filipino dress. Most Filipinos speak English.

While most streets of the city have a paved or asphalt surface, many of them constantly are in a state of disrepair; side streets are often narrow and hazardous. All streets deteriorate rapidly during the rainy season and are marked by potholes of all sizes, shapes, and depths. Traffic is congested in the city, especially during the rush hours, with private automobiles, taxis, busses, jeepneys, motor bikes and occasionally even a horse-drawn cart vying, in a completely undisciplined manner, for space on the streets.



Clockwise, from above left: Rush hour traffic in front of the Embassy, Manila; the new Cultural Center of the Philippines, Roxas Boulevard, Manila; Fort Santiago, near Del Pan Bridge and the Pasig River, Manila; Hyatt Regency Hotel, Roxas Blvd.; Manila Hilton, six blocks from the Embassy; Manila Intercontinental, in suburban Makati; Makati Medical Center, Makati. Center: Embassy Dispensary.





After leaving the city one sees an almost continuous row of nipa huts clustering at frequent intervals into small villages or "barrios." In the nearby countryside one sees extensive rice paddies, lovely bamboo groves rising on the banks of small streams, salt flats and mudfish ponds. Carabaos, the work animal of the islands, slowly pull small, wooden plows through the fields during rice-planting season and wallow in mudholes, ditches and streams. On sunny days the farmers - both men and women - labor in the fields wearing brightly colored long-sleeved garments. On rainy days, they shelter themselves with picturesque palm-leaf raincoats and hats. In most areas, the methods of rice cultivation have not changed in hundreds of years. To the south of Manila, banana and coconut groves cover the earth. Except during March, April, and May, when uncultivated land turns brown, frequent rains keep the foliage brilliant green.

There are over a hundred American business concerns in Manila and almost all large U.S. manufacturers have agencies or representatives here. There is an American Chamber of Commerce. Manila's foreign colony consists of approximately 96,000 Chinese, 10,000 Americans, as well as a sizeable number of Spanish, Indian, British, German, Swiss, and other nationalities.

Although the tourist trade has increased in recent years, there are still fewer American tourists than at many other posts. Most American visitors to Manila are on business.

#### The Post and its Administration

THE EMBASSY IS LOCATED ON ROXAS Boulevard between United Nations Avenue and Padre Faura Street. It fronts on Manila Bay looking west to famous Corregidor at the mouth of the harbor 25 miles away.

The Embassy is organized along traditional lines with the Ambassador and Deputy Chief of Mission exercising overall supervision of the Diplomatic Mission. The Embassy includes the Administrative, Consular, Economic/Commercial, and Political sections, each of which is headed by a Counselor of Embassy. There are Air, Army, Naval, and Agricultural Attaches assigned to the Embassy. The following

regional offices of the Department of State also are attached to the Embassy: Area Telecommunications Office with its branch, the Regional Relay Facility, at Clark Air Base; Regional Communications Office; and the Regional Security Office. As senior representative of the United States in the Philippines, the Ambassador ensures that the programs and activities of all agencies at the Mission are coordinated and contribute to the attainment of foreign policy objectives of the United States.

The head offices of USAID are located in the new and modern Magsaysay Memorial Center Building, which also is located on Roxas Boulevard approximately 1 mile south of the Embassy. The Economic Cooperation Administration, forerunner of the present Agency for International Development, established an office at Manila in 1951, and its successor agencies, FOA, MSA, ICA, and currently AID have provided continuity of assistance operations. All have worked closely with the Philippine Government to better the welfare of Filipinos. The Director of USAID has the personal rank of Minister and is a member of the Country Team.

The United States Information Service, located in the Supplemental Office Building in the Chancery compound, is under the supervision of a Public Affairs Officer having the diplomatic title of Counselor for Public Affairs. Under his direction are the Cultural and Information Divisions, the Thomas Jefferson Cultural Center, located in Quezon City, and Branch USIS posts at Cebu and Davao.

The Joint U.S. Military Advisory Group (JUSMAG) has its offices in Quezon City. It is headed by a Brigadier General and is comprised of Army, Navy, Air Force and various support sections.

The Peace Corps program in the Philippines is one of the largest in the world. It was established in October 1961 with emphasis being placed on educational improvements in the fields of English, science and mathematics. With the phasing out of educationally oriented volunteers, the primary interest now is being focused on food production. The headquarters of Peace Corps Philippines is in Manila one mile from the Embassy.

Other organizations affiliated with the Embassy include the U.S. Delegation to the Asian Development Bank; the Regional Service Center, a publishing facility with a large offset printing plant providing services to all USIS posts and various other U.S. government civilian and military organizations in the East Asian and Pacific areas; the Philippines Relay Station (Voice of America) with Receiver and/or Transmitter sites at Baguio, Poro Point on Lingayen Gulf (about 26 miles from Manila), and Tinang, near Clark Air Base; regional offices of the Internal Revenue Service, Immigration and Naturalization Service, Drug Enforcement Administration, Treasury Department Regional Disbursing Office, which services 5 foreign service posts as well as many other U.S. Government operations in the Manila area; a large Veterans Administration Office, the only one located outside the United States, which provides veterans services to approximately 472,000 U.S. and Filipino veterans or beneficiaries and administers the U.S. Social Security program for 24,000 people residing in the Philippines who receive benefits under the program. A small office of the American Battle Monuments Commission takes care of the Manila American Cemetery and Memorial located within the former U.S. Army reservation at Fort Bonifacio, six miles southeast of Manila.

The Embassy's Administrative Section provides full or limited support services to all agencies within the Mission.

It is the practice of all agencies comprising the Mission to meet newly arriving personnel. Accordingly, personnel assigned to Manila should ensure that their arrival plans are communicated to their respective agencies. For the convenience of readers, there follows a listing of offices comprising the Mission, their telephone numbers (extensions where appropriate) and their office hours.

Embassy of the United States  
1201 Roxas Boulevard, Manila  
Phone: 59-80-11 Hours: 8:00 a.m.-  
12:00 noon; 1:00-5:00 p.m.

Agency for International Development  
Ramon Magsaysay Center, 1680  
Roxas Boulevard, Malate, Manila  
59-80-11 (448/451)  
7:30-11:45 a.m.-12:45-4:30 p.m.

American Battle Monuments  
Commission, Fort Bonifacio, Rizal  
88-02-12 7:30 a.m.-4:00 p.m.  
one-half hour taken for lunch.



Above: U.S. Embassy Chancery and supplemental Office Building, Manila.  
Right: Ramon Magsaysay Center, Manila, houses AID offices.



Defense Attache's Office  
Room 155, Chancery Building  
American Embassy, Manila  
59-80-11 (623/624)  
8:00 a.m.-12:00 noon 1:00-5:00 p.m.

Federal Aviation Administration  
Room 438, U.S. Embassy  
Office Building, 1131 Roxas  
Boulevard, Manila  
59-80-11(620/629) 8:00 a.m.-  
12:00 noon 1:00-5:00 p.m.

Drug Enforcement Administration  
Ramon Magsaysay Center, 1680  
Roxas Boulevard, Malate, Manila  
59-80-11(633/652) 8:30 a.m.-  
12:00 noon 1:00-5:00 p.m.

Immigration & Naturalization Service  
Room 145, U.S. Embassy  
Office Building, 1131 Roxas  
Boulevard, Manila  
59-80-11(694/695/682) 8:00 a.m.-  
12:00 noon 1:00-5:00 p.m.

Internal Revenue Service  
U.S. Treasury Department, Room 1200  
Ramon Magsaysay Center  
1680 Roxas Boulevard, Malate, Manila  
59-80-11 (493/497) 7:30-11:45 a.m.  
12:45-4:30 p.m.

Joint United States Military Advisory  
Group to the Republic of the Philip-  
pines, APO 96528, Timog & Tomas B.  
Morato Streets, Quezon City  
99-45-11 7:30 a.m.-12:00 noon  
12:30-4:00 p.m.

Peace Corps, 7th Floor, Cardinal Building, Herran corner T. Agoncillo Street, Ermita, Manila  
59-24-21, 59-80-11(692) 8:00 a.m.-12:00 noon 1:00-5:00 p.m.

Regional Service Center, Seafront Compound, Roxas Boulevard, Pasay City, 59-80-11 (721/733) 8:00 a.m.-12:00 noon 1:00-5:00 p.m.

Treasury Department, Division of Disbursement, Regional Office, Room 200, U.S. Embassy Office Building, 1131 Roxas Boulevard, Manila, 59-80-11 (550/551) 7:30 a.m.-12:00 noon 12:30-4:00 p.m.

U.S. Delegation, Asian Development Bank, Room 250, Chancery Building American Embassy, Manila  
59-80-11 (271/278) 8:00 a.m.-12:00 noon 1:00-5:00 p.m.

U.S. Coast Guard, Merchant Marine Detail, Room 126, U.S. Embassy Office Building, 1131 Roxas Boulevard, Manila  
59-80-11 (334) 8:00 a.m.-12:00 noon 1:00-5:00 p.m.

U.S. Department of Agriculture Foreign Agricultural Service Room 256, Chancery Building American Embassy, Manila  
59-80-11 (270/298) 8:00 a.m. -12:00 noon 1:00-5:00 p.m.

United States Information Service U.S. Embassy Office Building 1131 Roxas Boulevard, Manila  
59-80-11 (274/230) 8:00 a.m. -12:00 noon 1:00-5:00 p.m.

Veterans Administration U.S. Embassy Office Building 1131 Roxas Boulevard, Manila  
59-80-11 (501/502/503) 7:30 -11:30 a.m. 12:00 noon-4:00 p.m.

## LIFE AT POST

### Housing

**Temporary Quarters** - The Mission endeavors to assign newly arrived personnel to permanent quarters immediately upon arrival at post. A tight housing market sometimes makes immediate placement impossible and personnel are afforded temporary accommodations either in quarters under control of the employing agency or, infrequently, in a hotel. Temporary quarters

may be occupied up to one month. The Hyatt Regency and Bay View Hotels are the most commonly used hotels since they are conveniently located on Roxas Boulevard, near the Seafront and Chancery Compounds, respectively; the Hyatt Hotel is walking distance to the Embassy-operated Dining Room/Clubhouse at Seafront Compound. The Hyatt Hotel extends a special rate to Embassy personnel of \$18.00 for a single room and \$21.00 for a double room; the average daily rate at the Bay View Hotel is \$14.00 for a single room and \$16.00 for a double room, less 20% discount. Although not generally used for newly-arriving personnel, the Manila Hilton is within walking distance of the Embassy with its rates being \$23-\$27.00 for a single room and \$27-\$31.00 for a double room. All hotel rates are subject to service charge of 10%. Meals at the Hyatt Hotel range from \$2.00 to \$3.00 for breakfast and from \$3.50 to \$9.00 for luncheon and dinner; at the Bay View Hotel meals range from \$1.50 to \$2.50 for breakfast and from \$3.00 to \$7.50 for luncheon and dinner. Many newcomers, even if housed in hotels, prefer to eat at the Embassy-operated clubhouse located in the Seafront Compound, approximately three miles south of the Chancery on Roxas Boulevard. Boarding houses and pensions are not common in Manila.

**Permanent Housing** - The Department of State owns four residential properties in Manila. They are the residences of the Ambassador and Deputy Chief of Mission plus a 30-unit apartment and quarters for the Marine Guards, the latter two located in the Seafront Compound.

The Ambassador's residence, acquired in 1970, is located at 18 Jacaranda Street in the prestigious residential area known as Forbes Park. The residence, which is approximately seven miles from the Chancery, is a sprawling, bungalow-type dwelling of contemporary occidental-oriental design architecture; it was constructed in 1962. With the exception of a den-type room located below ground level, all residential rooms are located on one floor. In addition to spacious living and dining rooms, there are four bedrooms, library, family living room, office, serving room, and a modern kitchen; the servants' quarters, laundry facilities, and storage areas are located adjacent to the garage beneath the residence. There is a large stone terrace and a swimming pool to the rear of the building. The residence is centrally air-conditioned and has well-landscaped gardens.

The residence of the Deputy Chief of Mission is located at 2661 Park Avenue in



Above left: Ambassador's Residence, Forbes Park. Above right: DCM's Residence, Pasay City. Left: Ambassador's Residence, Baguio. Right: Seafront Apartments, Pasay City. Below: Four typical suburban houses for Mission personnel.



the residential area of Pasay City. The building, which is approximately four miles from the Chancery, is quite old, but has been well maintained. The upper floor has three bedrooms and two baths plus two small rooms acquired by enclosing and dividing the upper porch. The latter rooms usually are utilized for a study and spare bedroom. The lower floor has a living room, dining room, powder room, kitchen, pantry, and a large covered open terrace. Servants' quarters, laundry room, storage room, and garage are in two separate buildings. The grounds are large and attractive.

The three-story staff apartment building located within Seafont Compound in Pasay City, approximately three miles from the Chancery, has six three-bedroom apartments with 1½ baths; 22 two-bedroom apartments with one bath; and two one-bedroom apartments with bath. The bedrooms of each apartment are air-conditioned with window-type units. Each apartment on the second and third floors has its own small outside balcony while the ground floor apartments have small terraces. Some of the balconies and terraces have been screened. There is ample parking available; laundry facilities and dormitory-style servants' quarters are nearby. Assignments to the apartments are made on the basis of personal rank, size of family and other pertinent considerations.

With the exception of the NCOIC, all Marine Guards assigned to Manila are housed in the Marine House, a large residence (constructed for the purpose) in the Seafont Compound.

The majority of employees assigned to Manila are placed by their respective agencies in government-leased and furnished quarters either immediately upon arrival or shortly thereafter. Assignment to quarters is made on the basis of personal rank, size of families, and the availability of housing. The majority of employees are assigned to modern split-level or two-story dwellings in suburban subdivisions (villages) of Bel Air, Magallanes, San Lorenzo, Dasmariñas or Urdaneta, about five miles from the Embassy and close to modern shopping facilities. The houses are comparatively large and individually styled, but many of the lots are small, resulting in considerable "togetherness". Most houses have three or four bedrooms and two baths, carport, servant's quarters and modern, spacious kitchen. The subdivisions are incorporated into associations which

assess the landlord dues to cover the cost of guard service, garbage collection and street maintenance. In this environment, children can be allowed more freedom than in other sections of the city. These subdivisions are close to the International School, Makati Shopping Center, and are only a 20 to 25 minute drive from the Embassy, the USAID office building, and Seafont Compound.

As the ultimate assignment of quarters depends on availability, and as there are certain variations between agencies, individuals assigned to Manila are strongly urged to obtain detailed housing information from the appropriate agency representative at post.

Furnishings - The residences of the Ambassador, Deputy Chief of Mission, Director of USAID and Counselor for Public Affairs have complete furnishings, including freezers, automatic washing machines, and dryers. Freezers, washers, and dryers are not furnished for other houses. USAID issues washers.

The Embassy, USAID, USIS, and most other agencies having representation at Manila supply basic furnishings, i.e., dining room, living room, and bedroom furniture, drapes, lamps, electric range, refrigerator, etc., for their personnel. Furniture is a mixture of Stateside-procured sets and locally-manufactured furniture of Philippine mahogany and imported fabric, which compares favorably with the Stateside furniture. Rattan furniture is also used. Items such as rugs, lamps, chinaware, glassware, silverware, kitchen utensils (including pots and pans), small electrical appliances, linens and towels should be included in the effects of personnel assigned to Manila. Decorative items such as paintings, wood carvings, shell work, etc., may be purchased at reasonable prices on the local market.

Most agencies at the Mission either provide draperies or a drapery allowance. Ready-made curtains and draperies are not adaptable to most houses in Manila since, to provide maximum ventilation, the windows are extra long and wide, larger and less regular than in the U.S. Imported and locally made materials are available.

Utilities and Equipment - All quarters have modern plumbing, though most apartments and leased houses are equipped with showers

rather than bath tubs. There are infrequent periods of low pressure in the city water system which may cause water shortage.

Government-leased quarters come equipped with electric stove, refrigerator, hot water heater and an air-conditioner for each occupied bedroom. Because servants often keep their food in the family refrigerator, and because mildew, mold, and insects are a constant danger to food, many employees purchase a second refrigerator or a deep-freeze.

If additional air conditioners are brought, they should be 220 volt, 60 cycle A.C., 10,000 to 13,000 BTU. Smaller units are not able to cool the relatively large rooms in government quarters and larger units cause installation and wiring complications. The employee himself is responsible for the installation of any additional units, which must conform to standard safety regulations. Quarters in Manila have 110 v and/or 220 v, 60 cycle current.

Most families feel they need a washing machine, although some people find that their laundress is quite capable of doing the washing by hand.

Automatic washers are a matter of choice; if one is brought, it should be of the level-fill variety rather than the timed variety. In some cases, the housewife herself operates the machine to avoid damage and subsequent expensive repairs. For a large family, or a family with a baby, a clothes dryer is very useful, especially during the rainy season.

If the employee desires to purchase additional household appliances, the post exchanges offer a reasonable selection of some appliances at prices comparable to those of U.S. discount houses.

Persons owning tools, lawnmowers, garden tools, and garden furniture should bring them unless apartment living is contemplated. Small hand mowers are recommended over power mowers.

If owned, a television set should be brought, especially for the children. However, sets in need of extensive repair should

not be brought because of the lack of expert repairmen and spare parts. The channels in Manila feature many Stateside shows and old films. Antennas are necessary and can be purchased at post exchanges.

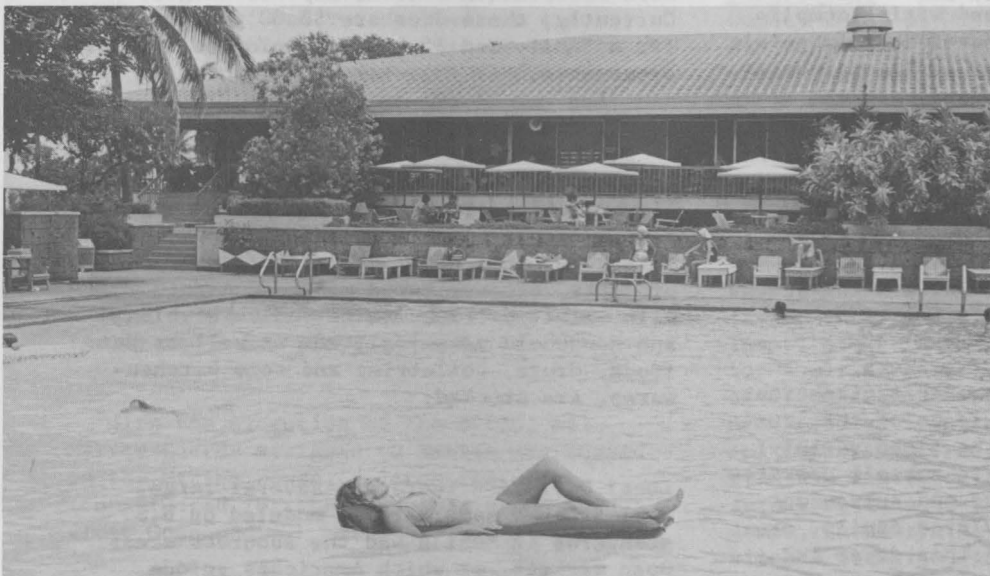
#### Food

SOURCES OF FOOD for U.S. government employees having free entry privileges in Manila are as follows: U.S. Employees Association Commissary - The USEA is a cooperative undertaking and requires a deposit for membership as follows: 3% of the employee's annual base salary, if married with dependent at post, and 1½% if single. The initial deposit is payable 25% down and the remainder in five equal monthly payments. This deposit is refunded upon departure from post, minus such association dues as may be charged. Currently, these dues are \$8.00 per month for a family and \$5.00 for employees without dependents.

The Commissary, located in the Seafont Compound carries practically all foods, liquors, cigarettes, and sundries necessary for an American family. Canned goods, frozen vegetables and meats, baby foods, dairy products, reconstituted milk and canned whole milk, limited fresh fruits and vegetables, and household cleaning items as well as pet foods, drugs, toiletries and some kitchenwares, are stocked.

Local Outlets - There are several large, well-stocked supermarkets modeled on U.S. standards in Manila and the suburban areas. Open markets, at which Americans seldom shop, sell fresh fruits and vegetables. In addition, there are several local bakeries specializing in various type breads, cakes and pastries.

Vegetables - Not all local vegetables appeal to the American palate but it is interesting to become acquainted with them. The more important locally grown vegetables include: celery, corn, green beans, eggplant, camote or sweet potato, sayote or green squash, pechay or chinese cabbage, kalabasa or yellow squash, tomatoes (seasonal), garlic and onions. Baguio vegetables, grown in the Mountain Province at altitudes ranging from 4,000 to 5,000 feet, are available from November to July. These include beets, tomatoes, cauliflower, celery, green beans, peas, cabbage, snowpeas, cucum-



Above, left: United States Employees Association (USEA) Commissary, Seafront compound, Pasay City. Above: Embassy-furnished living room in Magallanes Village house. Left: USEA swimming pool and Clubhouse, Seafront compound. Bottom left: Living room in Seafront apartments. Below: Kitchen in Seafront apartment.



bers, lettuce, okra and turnips. Potatoes are available but are usually small.

Fruits - There are many local fruits; among them, the banana, pineapple, mango and papaya are the most popular. Other fruits are the avocado, calamansi (a small native fruit which looks like a lime but is sweeter and is excellent for fruit drinks), chico, guava, lanzones, mangosteens, native oranges, tangerines, pomelos and star apples. Baguio produces good rhubarb and strawberries. Cantaloupes, watermelons and other melons are plentiful and inexpensive in season.

Military Facilities - Personnel are permitted to use the commissary and post exchange facilities at the following military bases: Clark Air Base - 2 to 2½ hours drive from Manila; Subic Naval Base - 3 to 3½ hours drive. The facilities at John Hay Air Base can also be used when visiting Baguio.

USEA sponsors the following eating facilities for its members:

Restaurant at Seafront Compound - open Monday, Tuesday, Thursday from 8:00 a.m. to 8:30 p.m.; Wednesday, Saturday & Sunday from 8:00 a.m. to 9:30 p.m.; Friday 8:00 a.m. to midnight.

Snack bar at Seafront Compound - open daily from 10:00 a.m. to 5:00 p.m., in ground floor of new clubhouse, adjacent to swimming pool.

Clothing

COTTON AND OTHER LIGHTWEIGHT CLOTHING is worn the year round in Manila by men, women, and children. However, woolen clothing including topcoats, should be brought for vacationing in Baguio or visiting Hong Kong, Taipei, or Tokyo during the winter. Sweaters and woolen stoles are useful in air-conditioned rooms and at night in cooler months. Many people find nylon clothing too warm and uncomfortable during the very hot months and recommend cotton or cotton/synthetic mixtures.

One should bear in mind that Manila is a style-conscious community and the latest European and American fashions are followed.

Ladies should consider, too, that as members of a diplomatic mission they are likely to attend more (and dressier) parties than would be the case in Washington, and this should be taken into account when planning a wardrobe for Manila.

Clothes seem to wear out much faster because of the need for more changes during the day, frequent washings, and the climate. The same is true of shoes, which deteriorate more rapidly during the rainy season and because of the conditions of the sidewalks. Unless clothing is stored in air-conditioned rooms or dry closets, it should be aired and sunned occasionally to prevent mildew.

One should bring an adequate supply of clothing and shoes; whether this "adequate" supply is sufficient for one year or two depends upon the individual's needs, preferences and finances. Many people find it advantageous to bring to Manila the clothing already owned, assuming it to be temporarily adequate. Additional items can easily and inexpensively be made here.

More specifically, clothing and shoe requirements for personnel and dependents are as follows: Men's Clothing - Tropical worsted and palm-beach type suits can be worn during the cooler months in Manila and Baguio, Hong Kong and Japan, and it is recommended that one bring suits sufficient for a two-year tour. Washable suits are convenient and practical, but regular suits may be brought as satisfactory. Dry cleaning establishments do exist. If new suits are purchased, dacron and cotton blends are most useful. If possible, bring several pairs of washable slacks. "Black tie" will be needed by most officers and, if owned, a white unlined dinner jacket should be brought. It is suggested that those who do not already have formal summer evening clothes delay purchasing until after arrival at the post since they can be tailored reasonably in Manila. It is unlikely there will be any requirement for full dress or morning-coat attire.

After arrival most men are convinced of the practicability and cool comfort of the Barong Tagalog, a traditional Filipino shirt. It is loose-fitting, usually made of sheer material with embroidered collar, cuffs and front, and worn outside the trousers whether in the daytime or eve-

ning. The Barong Tagalog can also be worn to formal functions when combined with tuxedo trousers, thereby eliminating the wearing of a warm dinner jacket.

White daytime shirts of the porous summerweight type should be brought. Short-sleeved shirts are acceptable in the offices (coats usually are discarded while working). Short-sleeved cotton sports shirts are most useful for off-duty hours. Long-sleeved sports shirts might be useful in Baguio.

Bring an adequate supply of underwear, but additional underwear can easily be obtained on the local market. Men will find washable ties useful. Cotton, rayon, or wool socks are used according to individual preferences. Non-elastic summer belts are more comfortable and last longer than elastic ones. Hats are unnecessary.

U.S. made shoes in the local market are very expensive. While shoes normally are stocked in the post exchanges, size and type are limited. It is therefore urged that an adequate supply be brought. Men will find that the shoes which are comfortable in the U.S. in summertime will be equally comfortable here.

**Women's Clothing:** Because of the hot climate, most women are early-risers in Manila and many women's meetings, bridge-parties, etc., get an early start. Consequently, a change of clothing two or three times a day is not uncommon. While cotton materials or linens are best for this climate, one should bring the light silks, crepes, satins, brocades, sheer woolens, and synthetics already owned for wear in the cool season, in air-conditioned rooms in Manila, and on visits to Baguio, Hong Kong, and Japan. In purchasing materials other than cotton, the tendency to wrinkle or cling in the heat should be considered. Light-colored dresses give an appearance of coolness in the hot season, but it is nice to have some darker dresses for the rainy and cool seasons. If desired, furs may be brought for winter trips to Hong Kong or Japan, since proper fur storage facilities are available.

One will need many inexpensive cotton, cotton/synthetic mixture, or linen dresses for daytime and office wear and slightly dressier cotton or linens for morning

coffees, luncheons and afternoon teas. In purchasing cottons, one should keep in mind that some fabrics and designs appear less crumpled in hot weather. Cotton or cotton combination suits are comfortable and very wrinkle resistant.

Pant suits are worthy of special note. They are worn and are acceptable everywhere and depending upon style and fabric, are suitable for coffees, luncheons, teas, cocktail parties and even balls. It is true that sports clothes such as shorts, slacks and pedal pushers should be worn only around the house or while participating in sports; however, pant suits do not fall into that category.

Cocktail dresses are "dressier" and worn much more frequently by many women of the Mission than would be the case in the United States. These dresses are sometimes made of cotton or linen, but particularly during the cooler months (October through January), silks, brocades, laces, chiffons and similar materials are very popular and comfortable. Current fashion allows wearing long dresses or evening skirts with blouses even to cocktail parties. Therefore, ladies may bring several long dresses (not necessarily formal) or may have them made here.

Dressmakers are available to make all types of ladies' clothing, from the "little dressmaker around the corner" to fairly expensive haute couturiere clothing. Prices and results vary accordingly. If you own a sewing machine, a common and convenient arrangement is to have a dressmaker come to work at your home for a nominal fee and lunch. In any event, a trial and error period is necessary before one settles on a dressmaker.

Pictures from magazines are used, rather than patterns. Suitable material may be purchased at the post exchanges or at the many well-stocked shops in Manila which carry American, Japanese, European and locally made materials. The latter include dacron/cotton, ramie/tetoron (a linen-like fabric), cefrele polyester knit, piña (pineapple cloth), jusi (banana fiber cloth) and hablon (handwoven cotton/silk). The dacron/cotton and ramie/tetoron dress lengths, which usually have hand-or-machine-embroidered fronts,

made into simple dresses, are popular for everyday and office wear. The piña and jusi cloths are filmy, delicate materials, usually beautifully hand-embroidered, which are made into pant suits, evening dresses, and cocktail dresses.

Hats are almost never worn, even to church (veils or mantillas are worn by some women to Catholic churches). Gloves are seldom, if ever, worn. It is a matter of personal preference whether one wears stockings or panty hose, but many women wear them during the cooler season and for evening functions. Philippine women almost invariably wear stockings for dress-up occasions. Attractive handbags and jewelry may be found in many shops.

A limited stock of bathing suits is available on the local market (Philippine sizes will generally fit only the "petite" American figure) and at the post exchanges, so it is wise to bring one or two suits to the post.

The post exchanges occasionally have ladies' shoes, but sizes, styles, and colors are very limited. Some women have found local shoes to be comfortable, stylish, and reasonably priced. It is difficult to find ready-made shoes in sizes larger than 8, though it is possible to have them made to order at very low cost. Consequently, it is recommended that women with unusually narrow feet, or with a shoe size larger than 8, bring a supply of shoes to the post. Light-colored shoes, spectators, darker leather shoes, and patent leather are all worn. The choice among styles is a matter of personal preference. When buying shoes, make sure they are comfortable and not too narrow, since feet do swell in the heat. In the warm weather, open shoes are most comfortable for daytime wear.

Use of raincoats and boots during the rainy season is a matter of personal preference; it is recommended, however, that raincoats, umbrellas and other rain accessories already owned be brought to the post. Umbrellas and plastic raincoats are available at post exchanges and on the local market.

Except for very hot months, nylon underclothes can be worn, and some women wear

them the year around. Both nylon and cotton underwear are available at post exchanges and on the local market. Selection is limited, however, and it would be advisable to bring an initial supply of favorite brands and styles, especially bras.

**Children's Clothing:** Children require the same clothing they are accustomed to wearing in summer in the United States. They spend much of their time out-doors and will need many changes of washable, durable play-clothes; shorts, pedal pushers, jeans and sleeveless or short-sleeved T-shirts. Extra bathing suits should be brought; while they are available at the post exchanges, correct sizes may sometimes be hard to find. Teenagers' styles generally follow U.S. clothing fads for parties, school, and sportswear.

A reasonable supply of underwear and socks should be brought, especially infants' cotton socks, which are difficult to obtain at post. The post exchanges stock children's clothes and shoes only irregularly and cannot be counted upon as a source of supply. Sturdy shoes for young children are hard to find through size 8, though local stores carry a good supply of sandals, sneakers and lightweight shoes. These local shoes are usually available in medium or wide widths and wear fairly well.

Daytime wear for infants and very young children is usually diapers, shorts, little panties, sunsuits, bathing suits, etc., which are available locally. Only a limited supply of regular and disposable diapers is available at the post exchanges and presently individual purchases are strictly limited. Special pre-folded disposable diapers are not available at all. The local disposable diapers are of very poor quality.

Any special dress considerations for children attending school in the Philippines can easily be met at post. Very lightweight rainwear is a necessity for small children. Children attending the Brent School at Baguio will want more woolen clothing than for Manila.

It is suggested that parents establish contact with a good department store in the U.S. from which they may order clothes and shoes as needed, because of growth, wear and tear, and local non-availability of some items.

## SUPPLIES AND SERVICES

### Supplies

The USEA exchange, located within the Commissary at Seafont Compound, carries a good stock of toiletries, cosmetics, feminine personal items, tobacco, home medicines, entertainment accessories, stationery, film, kitchenware, shower curtains, bathmats, ladies' hose and jewelry. A wider range of these items is available at the Clark Air Base and Subic Naval Base exchanges. In addition, such items are available on the local market, usually cheaper if manufactured locally than if imported. Several American drug and toiletry companies have manufacturing operations in the Philippines providing many familiar brand-name products at prices below those in the United States or the post exchanges.

Toys are available locally and in the post exchanges, but good educational toys are in limited supply.

### Basic Services

**Laundry and Dry Cleaning:** Laundry is customarily done daily at home by the "lavandera" in a household which employs more than one servant and by the all-around maid in the small or single household. Dry cleaning is available at prices comparable to those in the U.S. and quality is good to excellent.

**Beauty Shops:** There are many beauty shops in Manila, some small and simple, and some quite luxurious establishments. Prices are lower than in the United States and workmanship is good.

**Barber Shops:** There are many good barber shops in the city and suburbs, and prices are less than in the U.S.

**Dressmakers:** Dressmaking by Filipina women can be done in your home cheaply and easily. See section on Women's Clothing.

**Tailors:** There are several men's tailors

who do reasonable quality work, most are located in suburban shops. As always, quality will vary with price.

**Shoe Repairs:** These are mostly small enterprises, where workmanship is good and prices are less than in the U.S. Shoe repair facilities at reasonable cost are also available at U.S. military bases.

**Radio and Electrical Repairs:** The various dealers in radios, TVs, air conditioners, and electrical appliances maintain facilities and qualified personnel to make repairs; also, there are many small individually owned repair shops where most of the work is reliable and cost is reasonable.

**Miscellaneous Household Services:** The making of lamp shades, sofa cushions and draperies is reasonable - and picture-framing is excellent and not expensive.

**Garage and Service Stations:** Many modern service stations are in operation and more are being built all the time. Basic services are available at these stations - lubrication, tire repair, compressed air, battery services, etc. There are a number of automotive repair establishments in Manila. Both the cost and quality of work are variable. Spare parts are frequently scarce and may have to be ordered from the U.S. Many of these shops do good body repair work.

### Domestic Help

In Manila it is usually easy to get competent household help, though sometimes a short trial and error period is necessary before settling on someone suitable. Under proper supervision, domestics are clean, honest, loyal, cooperative, and very good with children. Careful and patient instructions must be given, since it is often taken for granted that their understanding of English is better than it actually is.

The number of servants required depends upon the size of the family, size of living quarters the amount of work done by the family itself, and the extent and type of entertaining. Single employees living in

apartments usually have one full-time servant; families have a minimum of two, a cook and a housegirl/lavandera, both of whom usually live in. Those maintaining large houses often have a four-or five-day-a-week combination gardener-houseboy. Many automobile owners find it convenient to have a driver or household servant who can drive. It is also convenient to bring your U.S. electrical appliances, which work on the current supplied to Embassy-leased housing. Washers, dryers and small kitchen appliances are the most helpful. These simple appliances will improve your servant's efficiency and do a better job than by hand.

Servants' wages may average ₱180-350 monthly, plus "chow money" and the yearly bonus. "Chow money" (expenses for meals) is paid in addition to basic salary. Although some people prefer to feed their servants, coffee, bread and sugar are often furnished in addition to chow money and uniforms are supplied.

Filipino servants are not covered under the Philippine Social Security System. There is, however, low-cost health insurance available for domestics, which it is advisable to purchase. Local laws apply and provide for such things as regular days off, payment of medical fees, adequate notice prior to discharge and so on. Complete physical clearance of domestic help before employment and check-ups every year are recommended.

### Religious Activities

Almost every faith is represented in Manila.

Catholics number over 80% of the population of the Philippines and there are many churches in all localities. Catholic orders from many countries - Spain, Belgium, Canada, and the United States, among others - are active in the country.

Protestants have several active churches, including the Union Church of Manila, which is non-denominational and serves the international community; Holy Trinity Anglican Episcopal Church; the International Baptist Church; the Lutheran Church; Seventh Day Adventist Church; and others. There is also a Church of Jesus Christ of the Latter-Day Saints, a Unitarian congregation, and a Jewish Community Center.

The Saturday newspapers carry the times

of services and location of places of worship.

### Education

**"At Post":** The International School is a non-sectarian, college-preparatory and general academic day school for boys and girls of all nationalities in kindergarten through grade 12. Formerly called The American School, it was founded in 1920 by American and British residents of Manila. It was incorporated as a private, independent school and is registered under the laws of the Republic of the Philippines on a non-profit, non-stock basis. In 1970 the name was changed to International School to reflect the increasing inter-nationality of the student population.

**Enrollment:** Approximately 2,000 students are enrolled, of whom roughly 50% are Americans, 20% are Filipinos, and 30% are students of approximately forty other nationalities. Of the American children, the number of dependents of U.S. Government direct-hire or contract employees usually runs between 40% and 45%. About half the student body is in Elementary School (grades K-5), one-fourth in Middle School (grades 6-8), and one-fourth in High School (grades 9-12).

**Location and Facilities:** The school is located in Bel Air Village, Makati, a suburb of Manila, on 50,000 square meters of land owned by the school. It operates in a modern school plant built in 1961 and subsequently expanded, including a new middle school in 1974. In addition to classrooms, laboratories, teachers' rooms, an infirmary, and administrative offices, the facilities include a media center, an elementary library, an elementary resource enrichment center, a band room, an assembly hall, a cafeteria, two gymnasiums, a swimming pool, a covered play area, and a large open play area. All indoor facilities except the gymnasiums are air conditioned.

### School Calendar and Daily Schedules:

The school year runs from early August to late May and is composed of two semesters with two quarters each. Daily schedules for the academic program are:

Kindergarten - 8:00 a.m. to 11:00 a.m.  
Prep & Grade I - 7:15 a.m. to 12:00 noon  
Grades 2-12 - 7:15 a.m. to 12:45 p.m.

Students are encouraged to participate in the wide variety of extra-curricular activities offered after class hours.

**Faculty and Administration:** The Superintendent, the Assistant to the Superintendent for Curriculum, the three Principals, the Director of Counselling and Guidance and the Athletic Director are especially selected in the United States to provide highly qualified leadership. The teachers, though usually educated in the United States, are primarily Filipino. At this writing, there are 178 full-time and 4 part-time members of the professional staff, of whom 163 are Filipinos, 8 are U.S. citizens, and 11 are persons of other nationalities (British, Burmese, Canadian, Chinese, Dutch, French, Greek and Spanish). Academic qualifications of the professional staff include 10 Doctorate degrees, 32 Masters, 169 Bachelors, and 8 Diplomas or Certificates.

**Trustees:** The ten-member Board of Trustees is responsible for the formulation of school policy. Each family with a child in school is an associate member of International School, Inc., and at the annual meeting of members three Trustees are elected for three-year terms. (Every third year four Trustees are elected).

**Admissions:** The school will admit, at the grade level attained, all educable children of the international community who were in good standing and had no unresolved disciplinary or emotional problems in their previous schools. Children coming from abroad may enter at any time during the school year. Orientation and catch-up help are given to late-entering students; however, parents are urged to make every possible effort to effect their transfer to the Philippines in time for the beginning of the school year. Children applying for kindergarten and grade 1 must be at least four years eight months and five years eight months old respectively on or before the opening day of school. Further information and admission forms may be obtained by writing to the Director of Admissions, C.C.P.O. Box 323, Makati, Rizal D-708, Philippines.

**Curriculum:** Instruction is in English.

The curriculum is primarily for college preparation and is comparable to curricula in good preparatory schools in the United States; however, selection of electives enriches and broadens the program and gives it flexibility to accommodate those students not planning to attend college. High School course offerings include opportunities for advanced placement in English, Spanish, and Mathematics. The foreign language program begins with Conversational Spanish in grade 2 and expands to include French, German, Spanish, and Pilipino in Middle School. These four languages plus Chinese are offered in High School. A special Language Development Program teaches English to speakers of other languages. The school is accredited by the Western Association of Schools and Colleges, and its credits are accepted by American colleges and universities.

**Testing Center:** The school participates in and is a testing center for several national testing programs: Secondary School Admission Test (SSAT), College Entrance Examination Board (CEEB), National Merit Scholarship Program (PSAT/NMSQT), and American College Test (ACT).

**Guidance:** Counseling services are offered at all levels by five full-time counselors -- one in Elementary, two in Middle School, and two in High School. They work with students and parents in the areas of personal counseling, academic counseling, and college and vocational planning.

**Extracurricular Activities:** In order to supplement the academic program, the school provides a variety of extracurricular activities designed to encourage physical well-being, intellectual interchange, diversification of interest, and participation in social activities. The sports program includes interscholastic baseball, basketball, cheerleading, golf, rowing, soccer, softball, swimming, tennis, track and field, volleyball, and wrestling. The school is a member of the Philippine Secondary School Athletic Association, which includes the DOD schools at Clark Air Base and Subic Naval Base, and participates in the national PRISSA league, which is composed of local schools on Luzon Island. There is also very active intramural competition in a wide variety of sports. Other activities include class organizations, committees, a wide assortment of clubs, the honor society, and the

publications put out by the students in three school divisions.

There are several nursery schools and kindergartens attended by children of Embassy personnel including the San Lorenzo Pre-School, a Montessori-oriented school, at which enrollment is dependent on the outcome of an entrance examination.

Other schools which have been attended by American children include the Ateneo (Jesuit Order), De La Salle (Brothers of the Christian Doctrine), and San Juan de Letran (Dominican Order). These are Catholic schools for boys offering instruction from first grade through high school. Schools for girls include Sta. Escolastica (Benedictine Sisters), Assumption College (Assumption Sisters), Sta. Theresa (Order of Saint Augustine) and Maryknoll. Priests and sisters of the Catholic schools do not instruct but supervise the classroom work.

**"Away from Post"** - Several families from Manila, as well as families from other Far East posts, send their older children to Brent School in Baguio City, the summer capital.

Brent, founded in 1909 under auspices of the Episcopal Church, is the only doubly-accredited, coeducational, non-sectarian, day and boarding school in South East Asia, (accredited with the Western Association of Schools and Colleges in the U.S. and with the Philippine Accrediting Association of Schools Colleges and Universities). The 27 acre campus is situated at an elevation of 5,000 feet, and offers an invigorating and healthful climate which is conducive to study the year round. The school has a fine library, chapel, infirmary with a registered nurse on duty 24 hours per day, gymnasium, playing fields and tennis courts. Full use of recreational facilities of nearby John Hay Air Base, including the championship golf course, is extended to Brent students and their parents.

Brent's curriculum is representative of the best practices to be found in public and private schools at home and abroad, including offerings such as SMSG math, BSCS biology and PSSC physics. The

school provides a seminar approach to learning with a teacher-pupil ratio of 8 students per teacher, individually guided education, and close personal contact between students and faculty. An active creative arts and performing arts program is a feature of the school, and participation in individual as well as group sports is encouraged. In depth cultural studies, curriculum related field trips and special "mini" courses contribute to an educational program encompassing the richness of our Western heritage with the existing experience of living and learning in a setting of Asian culture and tradition.

Tuition ranges between \$300 per year for Kindergarten-primary pupils and \$900 for high school seniors. Boarding is \$1,500 per year.

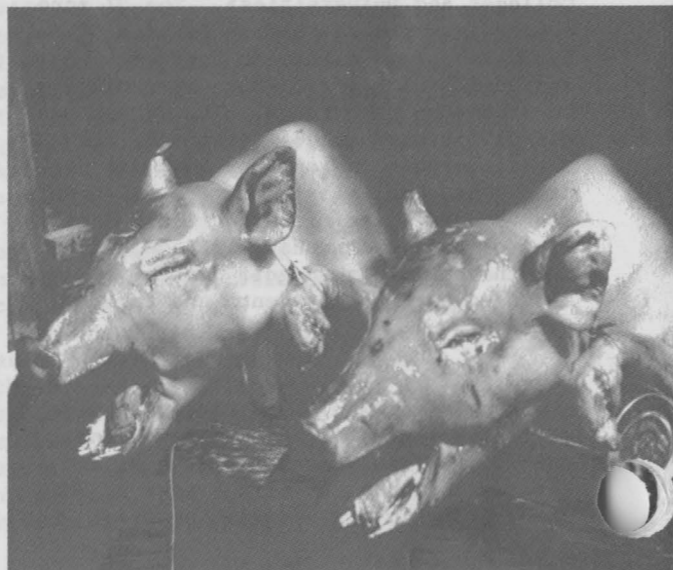
Approval of the Philippine Government has recently been obtained to establish on Brent campus the first American curriculum junior college in South Asia. Earned credits are fully transferrable to colleges and universities in the United States.

Information concerning the elementary school, the high school or the junior college may be obtained by writing the Headmaster, Brent School, Baguio City, R.P. APO S.F. 96298.

**Special Educational Opportunities:** The University of the Philippines (one-half hour drive from Manila) and the University of Santo Tomas are accredited to American colleges. There are also other private colleges and universities conveniently available to the college-age student. The Philippine system provides only 10 years (six elementary and four secondary) preparation before college, however. Most American parents prefer to send their children to Stateside colleges and universities because of this, and because discipline and scholastic requirements in Philippine universities are likely to be slack and libraries, laboratories, etc., are below the standards of first-class American schools. Some wives have taken special courses, though, and even obtained degrees during the course of a tour of duty in the Philippines.



Clockwise from top right: An old woman puffs on her cigar. A young girl smiles from a passing jeepney. Armed guards are a fact of daily life. Lechon, suckling pig, await buyers in Baclaran. Curbs are also offered. Police battle with the traffic is never-ending. Many provincial capitals hold religious festivals during Holy Week: the Ati-Atihan Procession in Panay, and a gladiator in the Moriones Passion Festival, Marinduque. Overleaf: Maps of the various posts in the Philippines, etc.



There are also a number of opportunities for adult and child education in music, art, foreign languages, etc., from private teachers and colleges.

Post Orientation Program - The Mission conducts an all-Agency orientation program for new arrivals every four months. The program which is given on two successive mornings, is opened by the Ambassador, who outlines the objectives of the United States in the Philippines. Presentations are made by senior representatives of all agencies forming the Mission, covering the political, economic, military, cultural and sociological aspects of Philippine-American relations and explain how each agency fits into the overall role of the Mission. In addition, at least one Filipino speaker participates, discussing Philippine-American sociological relationship. It is the practice of all agencies to brief newly arrived employees on the role of the individual agencies.

There is no Mission-sponsored language program for employees because English is spoken by the great majority of Filipinos with whom they have dealings.

Recreation and Social Activities

Sports - Manila offers many opportunities for participation in sports. Facilities for golf, tennis, pool swimming, bowling, riding, scuba diving and boating are available. Instruction, particularly golf, is available at reasonable prices, and a tour in Manila provides employees and dependents with an excellent opportunity to learn a sport.

USEA facilities at Seafront provide the most inexpensive sports opportunities in Manila. Included in the nominal monthly dues is the use of a swimming pool, tennis courts equipped for night games, basketball and volleyball courts, and a baseball diamond.

Golf was introduced to the Islands by American residents and businessmen some forty years ago and has since become one of the most popular sports. In and around Manila there are several golf clubs and links which attract players, and there are several practice driving ranges in the city. Best known of the clubs is the Wack

Wack Golf and Country Club with two 18-hole courses on an estate of about 320 acres. This club has been the scene of several international championships and has attracted many outstanding golfers from various parts of the world. In addition, the following clubs are conveniently located in and around Manila: Muni Golf Links, Capitol Hills Golf Club, Fort Bonifacio, Manila Golf Club, University of the Philippines and Nichols Air Force Base links. There are also two fine courses in the outlying areas (about 30 minutes by automobile); Valley Golf and Holiday Hills, to which membership may be obtained at fairly reasonable rates.

In addition to the pool at USEA, several private clubs and hotels have pools for the use of members. Tennis and pelota are popular sports in Manila and courts are available at several private clubs. There are several new and modern bowling alleys in the Manila area and an active USGE bowling league.

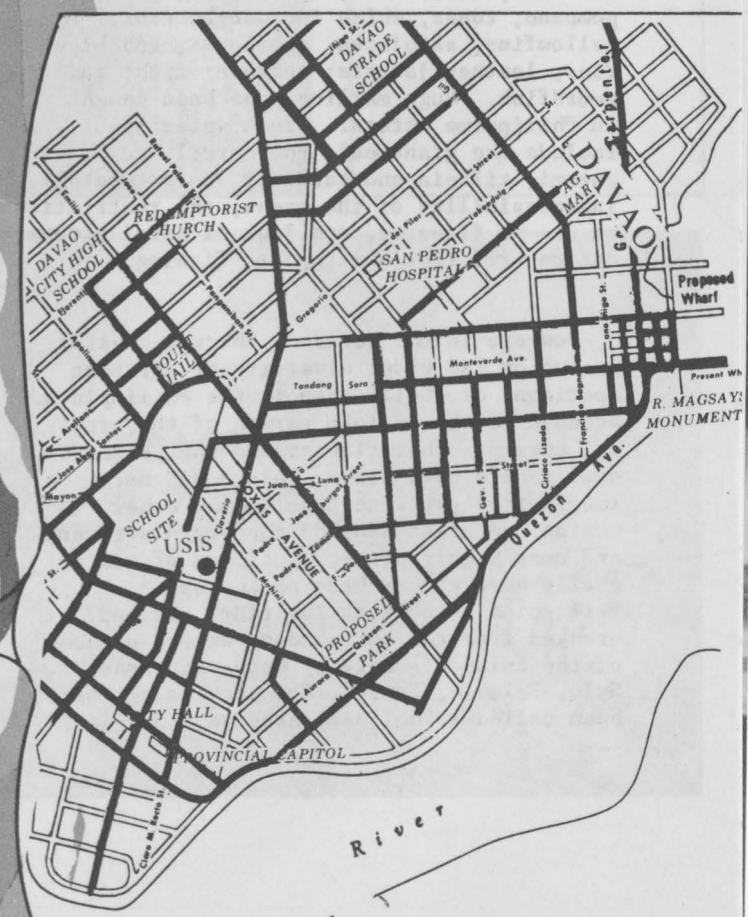
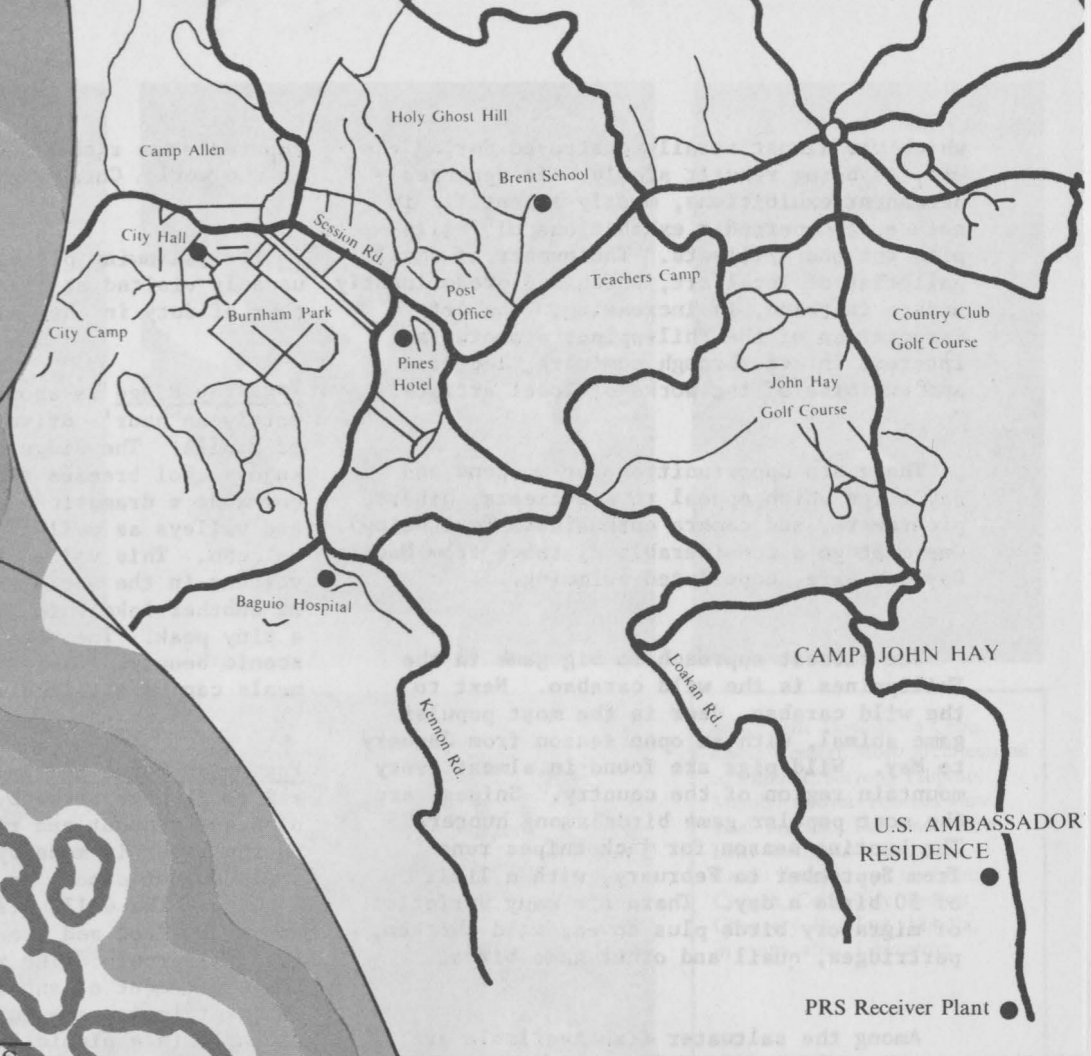
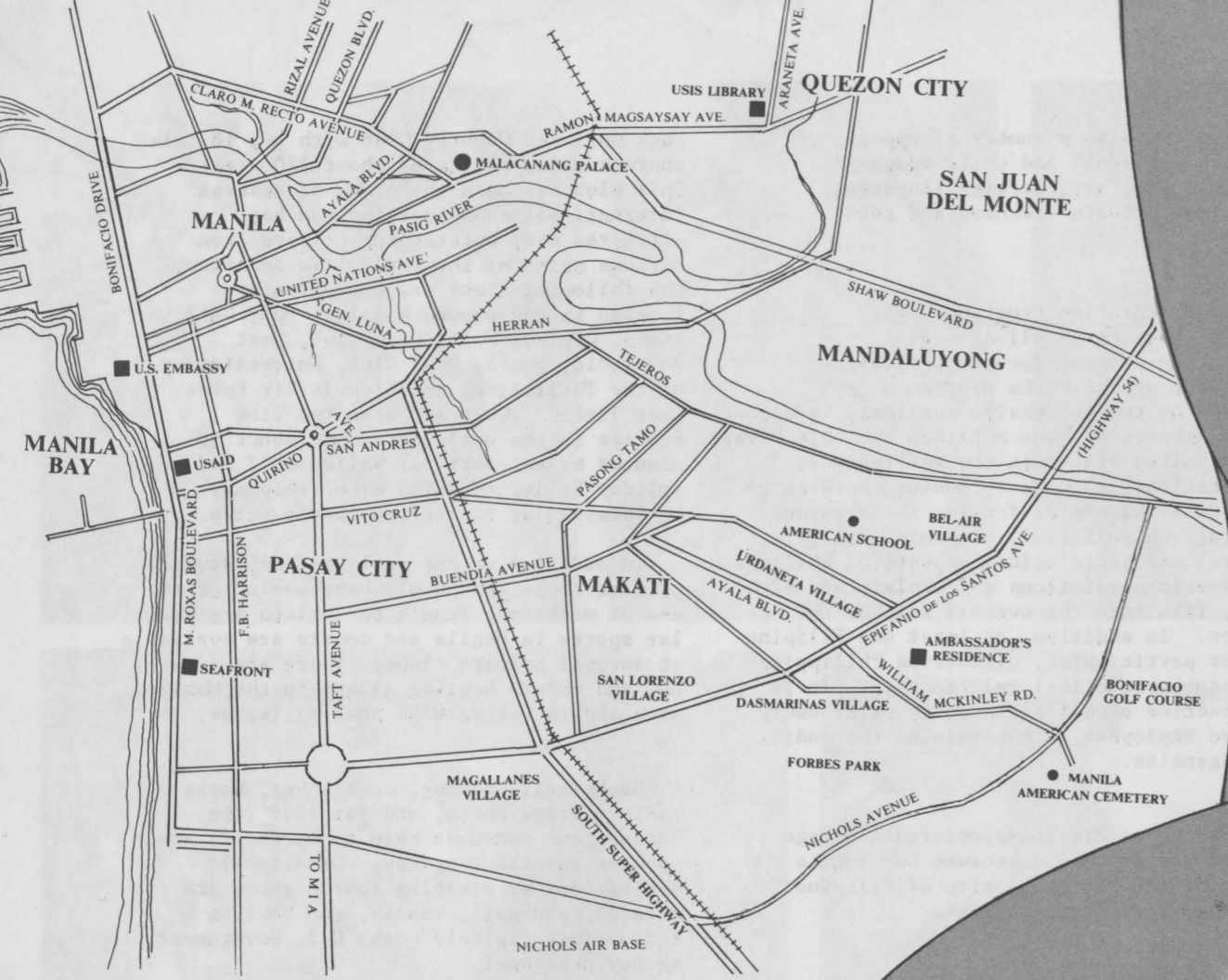
Basketball, boxing, cockfights, horse racing, track meets, and jai alai (the Basque game somewhat akin to handball) are popular spectator sports. Occasional exhibitions by visiting sports stars are offered, and golf, tennis, and bowling tournaments are held among U.S. Government agency personnel.

The athletically inclined should bring sports equipment and appropriate sports clothes with them since such items are not always available at post exchanges or on the local market. These would include golf socks and shoes, bowling shoes, shorts, swimming trunks, bathing suits (at least two for active swimmers and sunbathers), sports caps, etc.

Touring and Outdoor Activities - The tropical weather of the Philippines provides almost a year-round opportunity for touring and outdoor recreational activities, although they are curtailed somewhat in April and May because of the heat and in July, August and September by rains.

Sightseeing in Manila is highly diversified. Within the city itself there are interesting historical places, ancient churches, a zoo, a botanical garden and beautiful parks to visit. There is a public zoo and playground for small children. There are no sizeable museums or art galleries. The Philippine National Museum





which was almost totally destroyed during the war, is being rebuilt slowly. It features permanent exhibitions, mostly scientific in nature, and periodic exhibitions of Philippine art and artifacts. The number of small galleries of local art, which are predominantly modern in trend, is increasing. The Art Association of the Philippines promotes an interest in art through seminars, lectures and exhibits of the works of local artists.

There are opportunities for weekend and day trips which appeal to sightseers, hikers, picnickers, and camera enthusiasts (see below). One must go a considerable distance from Manila Bay for safe, unpolluted swimming.

The closest approach to big game in the Philippines is the wild carabao. Next to the wild carabao, deer is the most popular game animal, with an open season from January to May. Wild pigs are found in almost every mountain region of the country. Snipes, are the most popular game birds among hunters. The hunting season for jack snipes runs from September to February, with a limit of 50 birds a day. There are many varieties of migratory birds plus doves, wild chicken, partridges, quail and other game birds.

Among the saltwater fish available are: sea bass; barracudas; Spanish mackerel; pompano; tunas, which include bonitos, yellowfins, skipjacks, albacores, and bluefins; leather jackets; sergeant fish; and swordfish. Huge marlins have been caught in Philippine waters. Fresh water fish include the giant eel, the murrel, carp, gurami, tilapia and catfish. Unfortunately, inaccessibility of the areas, the restriction on use of firearms, and lack of hotel accommodations restrict hunting and fishing.

Nowhere in the world is there a greater profusion and wider diversity of striking specimens of shells than in the Philippines. Because of the uniform warmth of the tropical currents that flow around the island, shells here have richer colors and more imaginative patterns than in any other region. A great many of the world's rarest and most highly prized specimens of marine shells have either been picked up on Philippine beaches at low tide, trawled, or dredged from the surrounding waters of some of the Islands - notably Cebu, Mindanao, Sulu, Palawan, Samar. The archipelago has been called a "mollusk Paradise," and is

reputedly the richest shell collecting region in the world. Coral forms are also plentiful.

The following places of interest are usually visited at least once during a tour of duty in the Philippines:

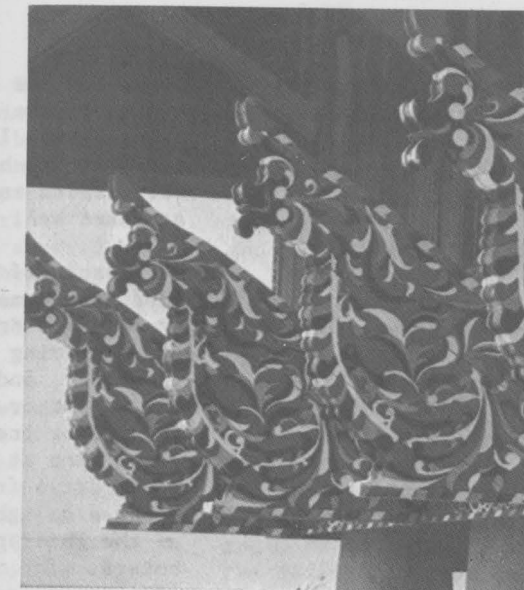
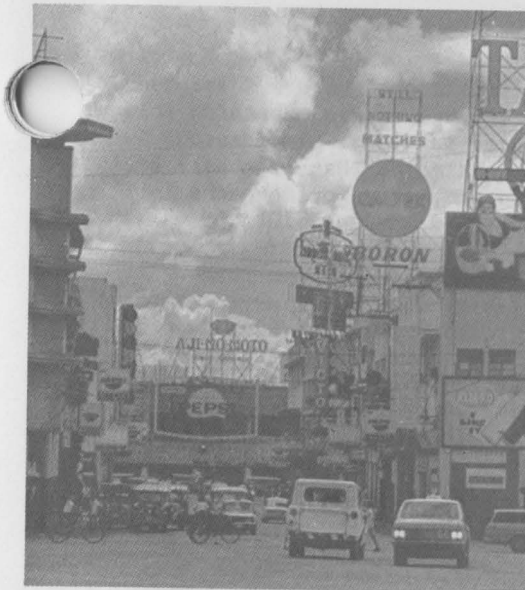
Tagaytay Ridge is about 35 miles or approximately an hour's drive by automobile south of Manila. The Ridge is 2,000 feet high and enjoys cool breezes throughout the year. It commands a dramatic view of rugged mountains and valleys as well as Lake Taal and Taal Volcano. This volcano is the lowest known volcano in the world and inside its crater is another lake which is again centered by a tiny peak. The view has few equals in scenic beauty. Overnight accommodations or meals can be obtained at the Taal Vista Lodge.

Pagsanjan Gorge and Rapids can be reached by a 2 to 2½ hour drive by automobile through pleasant coconut and rice country. The trip up the river is made by a native banca (a small dugout canoe) to Pagsanjan Falls through a gorge. The walls rise perpendicularly about 300 feet and are covered by luxuriant tropical growth. The return trip provides the excitement of shooting the rapids. The entire trip is made normally as a day's outing with a picnic lunch at the falls.

The Bamboo Organ at Las Piñas, a town about 30 minutes drive from Manila, is something remarkable and unique. The organ, made of dry bamboo tubes in 1814, still has flute tones which have remained virtually unchanged in over a century. A complete renovation of the organ was accomplished in Germany in 1975.

Bataan and Corregidor are names which evoke memories of the gallant though futile stand of Philippine-American forces during World War II against a numerically superior and better-equipped enemy. Bataan is a peninsula jutting out to the China Sea which can be visited by car (three to six hours) while Corregidor is a rock of an island at the mouth of Manila Bay. Daily trips can be made to Corregidor by hydrofoil. Periodically, special boat excursions are organized by Embassy groups.

Los Baños, about one hour's drive from Manila, is famous for its hot springs. The University of the Philippines' Colleges of Agriculture



Above left: Downtown Cebu. Above Center: Moro architectural adornment, Nayong Pilipino, Manila. Above: Tourists view Taal Volcano. Left and Below Left: Religious contrasts—Taoist Temple and Catholic Church, Cebu City. Below: Chancery Building, Manila, in ruins after Liberation.



and Forestry and Forest Products Laboratory and the International Rice Research Institute - the only such Institute in Southeast Asia - are located there.

Baguio, a beautiful resort located in pine-clad mountains at approximately 5,000 feet altitude, with a pleasantly cool climate all year round, is the most popular vacation spot in the Philippines, especially for families. It is only 155 miles north of Manila and normally can be reached by automobile in 5 to 6 hours; by train in approximately 6 hours (the last stage of the trip up the mountain is made by car); or by plane in less than one hour. During the rainy season, travel to and from Baguio is interrupted by landslides on the road and poor visibility at the airport.

The Embassy's property in Baguio consists of the Ambassador's Residence, site of surrender ceremonies in September 1945 of General Yamashita to the American Forces, a Guest House, and a Cottage. These facilities are available to American staff of the mission when not required for official use. Reservations are approved on a point system during the school vacation period and holidays when the demand is great. A small daily charge is made for the use of these facilities.

Camp John Hay Air Base in Baguio adjoins the Residence and is a U.S. military rest and recreation resort which offers a wide range of sports activities, including golf, tennis, bowling, archery, skeet and other sports and entertainment activities. Billets may be obtained at the Base, first preference being given to military personnel.

Beach Resorts. Not far from Baguio, about 1 to 2 hours, are several beach resorts facing the China Sea. Some of these offer comfortable accommodations and are popular with Americans for weekend visits. Subic Naval Base, together with its recreation area of Grande Island, offers swimming, water skiing, boating and shell collection, as well as golf and other sports. Other beach resorts exist in all directions from Manila and are too numerous to mention here.

Banaue Rice Terraces north of Baguio are known locally as the Eighth Wonder of the World. The view presents a whole chain of mountains terraced to their highest

peaks for the cultivation of rice. These terraces were carved out of the mountain sides by the Ifugaos thousands of years ago. It has been estimated that if they were placed end to end, they would reach at least half way round the world!

Because of the conditions of the road, tourists normally hire a car with an experienced driver for the 7 to 8 hour trip, driving to Bontoc or Banaue the first day, and returning to Baguio either the second or third day. Some break the trip to or from the terraces with an overnight stop at Mount Data Lodge about 3 hours drive from Baguio where one can spend a delightfully cool night at one of the Philippines' most modern guest houses. The new Banaue Hotel has first class accommodations.

Hundred Islands, which are actually 400 islands, islets and rocks in Lingayen Gulf, are of particular interest to fishermen and skindivers.

Mount Mayon is famous as the world's most nearly perfect volcanic cone. It rises in graceful symmetry from the plain of Albay to a height of 8,000 feet. It is located near the City of Legaspi which can be reached by plane or train. Tiwi Hot Springs, located 25 miles from Legaspi, is one of several hot springs also found in the area.

#### Entertainment

Movies are popular entertainment among Filipinos and there are a number of first-class air-conditioned theaters, particularly in the new suburban areas where many Americans live. First-run American and European films may be seen, as well as Filipino, Japanese and Chinese films. Admission prices are reasonable.

The USEA Library has a small but well-rounded collection of books for adults and children, including the latest best sellers. The USIS Thomas Jefferson Library has a good collection of "Americana." The American Historical Collection, located in the Office Building, is an excellent reference library on the Philippines and Filipino-American relations. Private clubs such as the Army and Navy Club, and also the Union

Church, have lending libraries. There are also public libraries and libraries at various schools and universities but these are seldom used by mission personnel. A limited supply of books, mainly paperbacks, is available at the Stars and Stripes bookstore, at post exchanges, and at several bookstores in the city and suburbs. Popular and classical records and tapes are available at post exchanges and on the local market.

The magnificent Cultural Center of the Philippines on Roxas Boulevard is the first of a complex of buildings to be put up on the large site set aside for the purpose. The Center has a 2,000-seat auditorium and a smaller theater of 450 seats. It has recently added a Folks Art Theatre for concerts and pageants. A museum and art gallery and an arts and music library are planned for the near future. Local and foreign concert and dance artists give performances throughout the year at the Center, as well as at several other auditoriums in the city.

The Manila Symphony Society with guest conductors presents several concerts and at least one opera or operetta annually and there are a number of other active local orchestra groups and choral societies.

The Bayanihan Dance Group, which has made several successful world tours, and several other folk dance and ballet groups, present performances throughout the year.

There is no legitimate theater in Manila, but there are a few amateur groups, the most important to English-speaking audiences being the Manila Theater Guild which presents productions of almost professional caliber and welcomes the participation of mission personnel.

Fiestas play an important role in Philippine life. They are a combination of religious symbolism and social life and are held in the various barrios to commemorate feast days of patron saints. They are patterned after similar events in Europe and Latin America and are often colorful, gay and spectacular. May is the height of the season for flowers and many festivals are planned for that month.

The Philippines offers ample subject

matter for photographers. Film is readily available at the USEA exchange, at military post exchanges, and on the local market (at slightly higher prices). Printing and developing facilities for black and white and color film are available, both locally and through post exchanges.

There are many good restaurants of all price ranges in Manila which serve Filipino, American, Chinese, Japanese and Continental food. Some of these restaurants are attached to the new, luxury hotels which have been built in recent years. In such high quality places prices are comparable to those in similar Stateside facilities. Night clubs and cocktail lounges abound, especially in the downtown areas.

#### Social Activities

Among Americans - The large official U.S. Government family plus the large American business community provide many opportunities for social activities among Americans. Such opportunities are also found through schools, churches and the various American (oftentimes with Filipino members) civic associations and lodges, including: American Chamber of Commerce, Eastern Star, Elks, Fraternal Order of Eagles, JAYCEES, Knights of Columbus, Lions, Masonic Lodge, Reserve Officers Association, Rotary International, Toastmasters Club, Veterans of Foreign Wars, YMCA, YWCA.

The Embassy has a Women's Club which meets regularly. In addition to sponsoring cultural and social programs, it has its own special charity projects, scholarship programs, and fund-raising functions such as balls, parties and Christmas card sales. Special tours and classes in Chinese cooking, flower arrangement, dress designing, etc. are also conducted.

In addition to Boy and Girl Scout activities, children of various ages participate in the USEA-sponsored Little League Baseball program and occasional field days, as well as school-sponsored programs. Other activities for children include: horseback riding, tennis, boating, skin-diving. For teens there is a USEA-sponsored Teen Club which has pool tables, hi-fi rooms, pingpong tables and a lounge. There is an active drama group at the International School.

Single employees have the usual opportu-

nities for social life among members of the Mission. The USEA Seafront swimming pool, bar, restaurant and tennis courts are popular gathering places.

International Contact - Newly-arrived personnel are encouraged to make a special effort to form acquaintances among the Filipino community, as well as with foreign residents. In most cases, this can be done through official and social contacts of the employee. Manila is a socially active community with Filipinos, Americans, and other foreign members of the business and diplomatic community attending the large diplomatic and consular parties and receptions. There is also a number of clubs in the city with international membership. Membership in such clubs is increasingly difficult to obtain and is expensive, but it is possible, with some delay, to obtain membership in the following: ARMY-NAVY CLUB, located next door to the Chancery grounds, with a swimming pool, tennis courts, children's playground, rental library, dining and party facilities. Associate memberships are extended to single women at reduced fees. Sponsorship by a member is necessary. MANILA POLO CLUB, adjacent to Forbes Park, with swimming, tennis, bowling, badminton and polo. MANILA BOAT CLUB, on the Pasig River in Santa Ana, with squash courts and rowing (sculls, pairs, and fours). The Boat Club is inexpensive, has no waiting list, and prides itself on its relaxed, informal atmosphere. MANILA YACHT CLUB, with clubhouse and sheltered basin for boats, located on Roxas Boulevard. MANILA OVERSEAS PRESS CLUB with dining room and bar.

Other private clubs include the Casino Español, with chiefly Spanish membership; Manila Club, with primarily British membership; The University Club; All Nations' Women's Club; Manila Symphony Women's Auxiliary; Manila Theater Guild.

Most women find that volunteer work at the Red Cross, School for the Deaf and Blind, Philippine-American Guardian Association, National Orthopedic Hospital, Veterans Memorial Hospital and other similar charity/welfare organizations provide opportunities to offer services to others.

Single employees have the usual opportunities for social life outside the Mission,

the extent of such opportunities depending on the efforts and interests of the employee.

Nature of Functions - Senior officers and their wives find that the demands of official entertainment are constant and impose a heavy burden on their time. Entertainment is usually in the form of cocktail parties or black-tie dinners. While there are fewer demands on other staff members, they find themselves frequently attending or giving official or semi-official parties.

During the dry season, many large lawn parties are held under colored lights and a tropical moon. During the wet season, parties are smaller but still generally of the cocktail variety. Food served at these affairs is more generous than at comparable cocktail parties in many other countries and consists, in most instances, of a light buffet-type meal. Because of the expense involved at Clubs, restaurants, and night clubs, most entertaining is done at home. The Embassy ballroom and conference room are available for large, official parties. USEA members may give parties at the Seafront facilities.

Standards of Social Conduct - Upon your arrival in Manila you will be met and welcomed by a representative from the Embassy. As soon as possible thereafter, you should telephone your supervisor to report your arrival and arrange a personal call.

The American mission in Manila is large and protocol has therefore been reduced to a few simple procedures above and beyond the good manners expected everywhere. Each branch of the mission has its own system for welcoming newcomers, and employees and their spouses, or adult dependents, are encouraged to attend these welcoming functions in order to meet as many people as possible in a short period of time, thus enabling them to be welcomed into the mission family. Newcomers are also welcome to join the functions of other branches. Information on these appears periodically in the mission publication, "OFFICIAL-INFORMAL."

The Ambassador and the Minister arrange to meet all newcomers shortly after their arrival. Additionally, during this current tour the Ambassador's wife and Deputy Chief of Mission's wife host a coffee on the first Thursday of the month to which ladies of the mission are invited. Also, there are coffees within the various villages planned to assist ladies of the mission in finding out about the villages and in meeting women from the various sections of the Embassy. The Embassy Wives Club also has a tea for newcomers each month.

A circular note informs the Philippine Department of Foreign Affairs and other diplomatic missions of the arrival and departure of officers on the diplomatic list. As a general rule, only heads of agencies and Counselors of Embassy and above in rank call on counterparts in other diplomatic missions; however, it is permissible for other diplomatic personnel to make calls when there is a special interest in a certain country or its representative.

Upon arrival in Manila, new personnel are given further detailed information on social practices in Manila. If at any time you have questions on protocol procedures, consult the Embassy's Protocol Specialist.

Diplomatic officers or other staff members need not bring more than 100 calling cards or "Mr. and Mrs." cards for a two-year period. "Informals" are very useful and an initial supply is advisable. Additional "Informals" and other types of invitations and calling cards can easily be printed locally at low cost.

Special Information - This post report has been prepared with the needs and privileges of regular employees in mind. AID contract personnel are governed by the provisions of the basic contract under which they work and the AID agreement with the host government. It is Mission policy that insofar as it is appropriate, contract employees will receive the same administrative and logistic support as direct-hire employees, but the basic contract must be specific concerning such things as education and medical benefits, household furnishings, transportation, length of tour, leave accumulation and use, personal automobiles, office space and furnishings and facilities, etc., if problems

are to be avoided after arrival in the Philippines.

U.S. Government officials on TDY in the Philippines are granted guest privileges at USEA for a maximum of five (5) days without charge. At the same time, limited privileges are granted at post exchanges.

---

#### Supplemental Information for Department of Defense Attache Personnel

---

White uniforms are worn at practically all military formations. Aiguillettes are required. For informal visits to the military, cotton khaki uniforms, without blouse and without tie, are appropriate for Army and Air Force officers; white cotton uniform with short-sleeved shirt is the informal Navy uniform. Woolen uniforms are never worn. Civilian clothes are normally worn in the office by both officers and enlisted personnel.

Enlisted personnel are authorized to draw the tropical civilian clothing allowance and normally wear civilian clothing. Military uniforms are necessary for plane crews.

General - The U.S. Naval Station at Subic Bay has a Clothing and Small Store and a Ship's Service Store which provide replacements for most Navy uniform items for both officers and enlisted personnel. Clark Air Base has a large stock of items in similar supply outlets. Most officers have white uniforms tailored in the Philippines.

Visas - Military personnel assigned to bases in the Philippines are not required to have visas, but it is essential that personnel assigned to the Defense Attache's offices have them, since they will usually be in civilian clothing and may travel outside the Philippines. Military personnel and dependents visiting the Philippines should have a Philippine visa.

Housing - There are Government-leased quarters available for officers, warrant officers and enlisted personnel. It is suggested that all personnel consult the Property Officer, DIA Support Detachment, to determine what furnishings will be available. There are no government quarters

available for DOD civilians. They should bring household furnishings.

**Automobiles** - All official requirements of the office can be met with assigned vehicles, but personal cars are desirable since local transportation, except for taxis, is inadequate.

It is suggested that all personnel consult the Post Report for additional information which may be of interest.

### BAGUIO: Philippines Relay Station

Description of Post City

BAGUIO IS LOCATED APPROXIMATELY 155 miles north of Manila at an altitude of 4,600 feet, in the mountains of northern Luzon, the main island of the Philippines. The countryside is mountainous and rugged, with scrub growth and pines covering the slopes. The overall location is reminiscent of the North Carolina and New England mountains. Scenery is one of Baguio's chief assets.

Built primarily by the Americans in the early 1900's, Baguio sprawls invitingly over the surrounding hills. It is a modern and thriving small-town community which has become one of the foremost vacation spots of not only the Philippines, but also of the entire Far East. A large number of the well-to-do Manilans and Philippine Government officials have summer homes in Baguio. Schools, business firms, and other organizations have summer camps and homes here for their employees to enjoy while escaping the tropical heat.

The main economic activity is tourism. The resident population of Baguio is approximately 83,000, but this figure triples during the tourist season. More than half of the population are squatters and the very poor; the remaining half are businessmen, retired families, school teachers, missionaries, and the wealthy who can afford to commute, for weekends and extended vacations, between Baguio and Manila or other larger cities.

The foreign colony is small, consisting for the most part of Spaniards, Indians, Chinese, and Americans. The small Chinese colony is complete with its own school and churches.

The American/European colony consists of missionaries, businessmen, teachers, miners, U.S. Air Force personnel, and U.S. Government employees and their families. Seventy-five percent of the local population speaks English well. It is estimated that over 1,000 Americans visit Baguio each year, not including military personnel who stay at John Hay Air Base.

Around the city, in mountain villages, live the Igorots (a generic term for various tribes). These are mountain tribesmen with loyalty first to their own tribe. They manage a living from the mountainsides and supplement this by weaving and wood carving. Their native costumes (G-strings and jackets for the men and bright-colored straight skirts and blouses for the women) are of interest to the foreign residents or tourists.

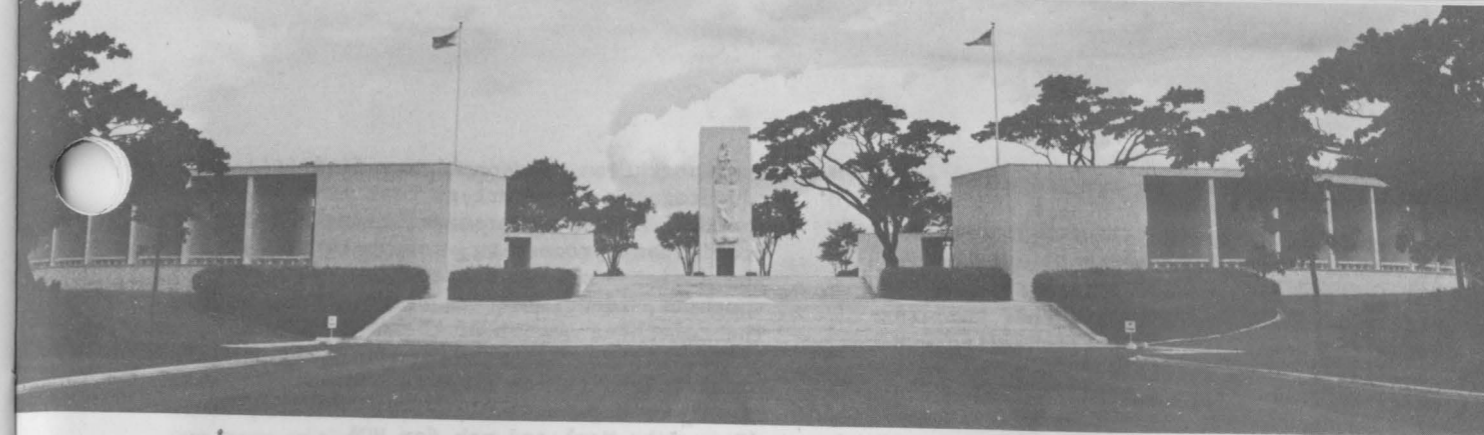
The business center consists of a central market, where local produce is sold, and many small shops and restaurants which line the four main streets. Around this area are found civic buildings, the impressive Cathedral which was the only large structure not damaged by the extensive wartime bombings, and lovely Burnham Park, named for the Chicago architect who designed the City.

### The Post and Its Administration

The Voice of America's Philippines Relay Station is the only U.S. Government agency located in Baguio (other than the U.S. Air Force and the Ambassador's residence staff). There are also a small number of Peace Corps personnel in the area and a few families of Air Force contract personnel who work at Wallace Air Station but live in Baguio.

The Philippines Relay Station is the largest of the Voice of America's overseas radio relay stations. This relay station rebroadcasts radio programs originating in the U.S. to Southeast Asia and China.

The Philippines Relay Station consists of three separate facilities:



Above: Manila American Memorial and Cemetery, Fort Bonifacio, outside of Manila.



Left: The International School, Bel Air Village, Makati.

Below: The Valley Golf Club, Antipolo.



Receiver Plant - The 80-acre receiver plant is located on John Hay Air Base reservation in Baguio at an elevation of 4,900 feet. It consists of a receiving building housing PRS station management offices and the receiving plant operation. Other buildings house the power plant and kitchen/storage facilities. The receiving plant relays programs to the Poro Point and Tinang transmitters.

Poro Transmitter Plant - This transmitting plant is located 40 miles northwest of Baguio on a peninsula known as Poro Point, overlooking San Fernando Bay and Lingayen Gulf, where some of the fiercest naval and air battles of World War II occurred. The plant's area including the antenna field, occupies approximately 207 acres at an elevation of 28 feet on the Camp Wallace Military Reservation and includes the transmitter power plant, warehouse, maintenance building, and garage.

Tinang Transmitter Plant - The Tinang Transmitter Plant is surrounded by thousands of acres of sugar cane fields and rice paddies in Central Luzon's relatively flat plateau area. On a clear day both coastal mountain ranges are visible, each 50 miles away. The drive by car from Manila, 70 miles south, takes 3 hours via MacArthur Highway 3. The 2,000-acre-plus site is situated only 2 miles off the main highway but must be reached by travelling 6 miles on a provincial road that turns off the town of Capas, Tarlac Province. The antenna field is in the lower segment of a triangle formed by the towns of Tarlac, Concepcion and Capas.

Radio programs are received at the receiving plant in Baguio from the U.S. and relayed by UHF radio to the transmitters at Poro Point and Tinang, then rebroadcast to the target areas by medium and shortwave radio broadcast transmitters using directional antennas.

Incoming personnel arrive in Manila. They are usually met by a representative from the Embassy or from the Philippines Relay Station. If an overnight stay in Manila is necessary, prior reservations will be obtained either at the Bay View or Filipinas Hotel. Onward transportation to Baguio will also be scheduled, either via Philippine Air Lines (if weather permits), or by Government vehicle. If a stopover in Manila is necessary due to weather or awaiting

transportation, personnel may find it advantageous to report at that time to the U.S. Embassy (Personnel Branch) for preliminary processing, information, and assistance with preparation of travel vouchers, identification cards, etc. The telephone number of the American Embassy in Manila is 59-80-11. Philippines Relay Station numbers are Baguio 25-69, or Baguio 21-01, 21-02, or 21-03 (Camp John Hay) and ask for VOA.

---

## Life at the Post

---

### Housing

Five of six PRS employees assigned to Baguio and Poro Point facilities are assigned to Government leased quarters in the city of Baguio. The six employees assigned to Tinang plant are provided Government-owned and furnished housing on Clark Air Base.

Temporary Quarters - New arrivals to Baguio usually stay temporarily at the John Hay Air Base, the Baguio Country Club Hotel, or in a Baguio City hotel, wherever space is available. At John Hay, military personnel have first preference. There are three types of quarters - Bachelor Officers' Quarters, single rooms; small one and two-room apartments; and three-bedroom cottages. All are completely furnished. Rates are nominal. There is however a 3-day limitation on civilian tenants.

Permanent Housing - Government quarters are not available in Baguio. There are temporary facilities available for overnight occupancy at Poro Point. They serve as emergency quarters for employees when work or road conditions necessitate their staying overnight, and are also available at nominal rates to PRS employees and their families for vacations.

Suitable Government leased housing in Baguio when leases expire, may require some weeks to locate, depending upon the local season and availability. PRS attempts to maintain Government leases but it is not always possible because of changing landlord desires and requirements. Housing has been particularly scarce in recent years due to a growing affluence of the population and an influx of itinerants into the cities.

Available houses generally have three or four bedrooms, kitchen, living room-dining room and servants' quarters. Outside areas are generally small by U.S. standards and very steep. As this is a resort town, some of the out-of-town landlords like to have a room available during the vacation season. Since many of the houses are built on a hillside and are two stories high, it is sometimes possible for the landlord to stay in one room without too much inconvenience. Houses are generally constructed of wood with some walls of rock or cement. Roofs are corrugated iron. Most windows have screens and iron bars. Almost all houses have fireplaces, which can be used throughout the year.

Furnishings - Two general caveats must be made clear about furnishings in Baguio. First, the climate in Baguio is very damaging to non-Philippine furniture, causing it to warp and crack. The damp infects books, clothing, and bedding with mildew, and causes rapid deterioration of woolen clothing, shoes, leather goods, lenses, photographic equipment, radios, paintings, etc. Second, appliances already owned should be brought to post; they will be useful there and ordering new ones from post exchanges can cause annoying delays. At the same time, bring special furniture items which are hard to find near Baguio, such as small tables, children's furniture, occasional chairs, and chests of drawers.

Towels, pillows, sheets and lightweight blankets are available at the base exchange, but because of the cooler climate, blankets will be needed immediately and should be brought. Electric blankets are very useful and are recommended. Personnel should allow bedding for servants. Curtain material is available on the local market or at the base exchange; ready-made curtains might be useful, but window sizes vary widely as do interior colors. Small hemp or cotton scatter rugs are useful and should be brought, as they are difficult to obtain at post. Some personnel believe it is not advisable to bring fine china and crystal as servants may be careless in their handling and breakage occurs frequently. China is usually available at the base exchange at reasonable prices. It is recommended that you ship those items you enjoy using, that will either add to your personal comfort or pleasure, rather than to attempt to replace them after your arrival.

Utilities and Equipment - Running water

is to be found in all dwellings inhabited by Americans. During the tourist season, when the population triples, electrical power failures and water shortage are a continuing problem. Bath tubs are rare; showers are the common form of bathing. Bathroom appliances may be of an antiquated nature with diminutive washbasins and inadequate cabinets. There is generally only overhead lighting and personnel should bring floor lamps with shades. Table lamps are obtainable at the base exchange most of the time.

The cool climate necessitates heating of some kind in houses and apartments. Although most homes have fireplaces, and wood is plentiful, it is advisable to have at least one electric heater. These can be purchased through the exchange on special order, but take from three to four months for delivery. Electric fans and air conditioners are not needed although dehumidifiers will be in constant use during the long rainy season.

Kitchens tend to be small and facilities limited. Stoves and refrigerators are required and should either be brought to the post or purchased from the base exchange after arrival. Gas stoves can be used as ample liquid propane gas is available. Refrigerators should be equipped with fairly large freezer units for the storage of frozen foods. PRS has a limited supply of stoves and refrigerators for loan to personnel, but these are not always available. Electric current in Baguio is 110 volt, 60 cycles although the voltage often varies from 80 to 130 volts depending upon the area of residence. Almost any electrical appliance can be used. Washing machines and dryers (especially handy during the rainy season) as well as small appliances such as toasters, mixers, fryers, waffle irons, grills, etc., should be brought if already owned, but can be obtained at the base exchanges at Clark and Subic at prices comparable to stateside discount houses.

Items subject to damage by the humid climate should be kept in hot closets and treated with special preparations, upholstered furniture treated with moth-proof and mildew-preventive mixtures, like mildew-rid; books wiped off at least weekly or stored in a special closet; radios played daily; record players equipped with variable reluctance or ceramic pickups.

## Food

The supply of food is adequate. At present, personnel are authorized to buy food at John Hay Air Base commissary, which is a grocery store comparable to a small neighborhood store in the States. Limited selections of frozen fruit, vegetables, fish, and meat are available most of the time. Fresh vegetables and fruits sometimes available are potatoes, onions, celery, carrots, apples, oranges and grapefruit. Occasionally, peaches, plums and grapes are on sale, but the quality is dubious because of the long shipping distances. Local fresh eggs, storage eggs, filled and dry milk, and white and rye bread are in good supply. Fresh milk is available at Magnolia Dairy. Vegetables and fruits may be bought on the local market in season. They should be washed in a Clorox solution before being eaten. Fresh seafood may be bought on the local market, but is expensive. There are no cafeterias or mess facilities for PRS personnel, but kitchen facilities are available both at the transmitting and receiving plants.

## Clothing

Women's Clothing - In general it can be said that clothing worn in the States during Spring and Fall will suffice for Baguio use. During the warmer seasons, most women wear cotton dresses, with a sweater for increased comfort during the evening. Bring your sweaters as local availability is limited. Washable clothes are most practical as the dampness is hard on woolens. However, woolen clothes are necessary because of the cool climate and should be brought to the post. Suits, skirts, sweaters, light woolen and silk dresses as well as a light wool toppler are useful. A good raincoat, rain boots and an umbrella are necessities. Bermuda shorts and similar sports attire is worn on the John Hay golf course and at the John Hay bowling alley; they are not, however, worn in the city. Most women wear dresses or skirts and sweaters for shopping and other activities. Slacks may be worn for all occasions. Bridge luncheons call for suits, dressy cottons, dresses of shantung, rayon or other such materials. Slightly more dressy attire is appropriate for evening dinner parties. Most women will want at least two cocktail dresses.

One formal of a spring or fall variety may be useful. Some light summer clothes should be brought for trips to Manila. As dressmakers are reasonable - about \$12 to sew a suit and \$6 to sew a dress or skirt - and fairly competent, women may wish to bring or have sent materials for having dresses made. Material is available at the base exchange and at the local market, but the selection is limited. Women who can sew are advised to bring sewing machines or to order one through the base exchange. There is a Singer agency in Baguio.

A limited selection of lingerie is available at the base exchange, but a supply should be brought to the post. In bringing rubber items, it is important to remember that rubber deteriorates in Baguio and it is wiser to reorder by mail from the States such things as girdles, brassieres and other items with elastic or elastic thread if they are not available at the base exchange. Hose are in short supply at the base exchange; they are sometimes worn in the evening and occasionally in the daytime.

A supply of shoes should be brought to the post. Although they are available at the John Hay exchange, the styles, sizes and colors are limited. Dress shoes, loafers and oxfords are in short supply. Some dress shoes are available in Baguio and in Manila but they are expensive because they are imported or handmade. Some shoes, including sandals, are available and considered a good buy on the local market except in large sizes (over 7½). It is possible to purchase some shoes at Clark Air Base. Odd colored shoe polish should be brought.

Men's Clothing - The base exchange usually carries a supply of shoes, shirts, socks and underwear of limited variety. Material for slacks is available at the exchange but opinions vary as to the quality of workmanship in having them made. Men visiting Manila or Clark Air Base may wish to have a light wash-and-wear summer suit or sports coat and slacks (Haspel). One or two lightweight suits, sports, jackets and slacks will be necessary, as well as one lightweight wool suit. Sweaters & jackets are needed for the evenings and for daytime wear during the cool season.

Most of the engineers at the relay station wear sport shirts and slacks for

work. Coat and tie are not required when dining at the clubs in the evening but are usually worn when eating out. One white dinner coat and one pair of black tux trousers may be brought for the occasional formal affairs.

Children's Clothing - A supply of children's clothing should be brought to the post. Light windbreaker-type jackets are very useful and light coats come in handy for girls. Rubber-soled saddle shoes are generally used for school by both girls and boys. Suitable children's shoes are rarely available at the base exchange, especially sturdy school shoes. Most items for babies such as diapers, panties, shirts, sunsuits, etc., can be purchased at the exchange.

General - Local textiles of an unusual nature include filmy material made of abaca or pineapple pulp, and locally woven cottons and linens which are too heavy for clothing but useful for capes, spreads and jackets. The famous Philippine embroideries are not widely found on the open market in Baguio. Brocades from Hong Kong, silks from Japan and Hong Kong, and British woolens are sometimes available at the base exchange at reasonable prices. Local tastes and standards are similar to those in the States.

## Supplies & Services

Supplies - Toiletries and cosmetics are available at the base exchange, although special items of toiletries and medicines should be brought to the post as only standard items are available. Shaving supplies, toothpaste, deodorants, etc., are available in a variety of brands.

Cigarettes and tobacco are available at the base exchange and liquor may be purchased at the John Hay package store at reasonable prices. Basic household items such as pots, pans, mixing bowls, shower curtains, glue, cement, cleansers, closet fittings, etc., are also available at the exchange. Locally made table mats, tablecloths and napkins of good quality and design are available both on the local market and at the exchange.

Basic Services - Local tailoring and dress-

making are both competent and reasonable for most needs at the post. Shoe repair is fair, but expensive. Beauty shops are of average quality. Radio and automobile repair shops are poor and only routine jobs can be done locally. Repair parts are scarce and costly. Quartermaster dry cleaning and laundry services are available at John Hay Air Base. They are reasonably priced and generally satisfactory. Most people utilize the John Hay dry cleaners in preference to local and either supplement their laundresses with, or utilize entirely, the John Hay laundry.

## Religious Activities

There are Roman Catholic, Episcopal, Christian Science, Lutheran, and United Church of Christ services in English. The latter is a united church staffed by Presbyterians and Evangelical United Brethren. Baptists as well as Lutherans have many missionaries in and around Baguio. All churches have Sunday Schools. The John Hay Chapel has 8 o'clock and 12:30 Catholic mass, 9:00 Sunday school and 10 o'clock Protestant services.

## Education

Dependent Education - "At Post" American children go to Brent School or Maryknoll. No children are sent to public schools in Baguio. The school year at Brent School is August to May; at Maryknoll June through March.

Brent School is a co-educational, private boarding and day school under the auspices of the Episcopal church. Classes run from Kindergarten through high school. In curriculum and general character it follows the pattern of private college preparatory schools in the United States. High standards of scholarship are maintained under a staff of American and Filipino teachers. Charges, including tuition, room and board (for boarders), registration fee, general fee, and student activity fee, are presently ₱10,600.00.

Maryknoll School, run by the Maryknoll Sisters, has grades one through six. Charges include tuition, registration fee, social fee, uniforms and charge for book rental and workbooks. A 10% reduction in

tuition is given to the third and fourth child of a family.

"Away From Post" - See Manila section page

Special Educational Opportunities - Baguio College has courses on a junior college level, as does the St. Louis University, but all credits are not transferable to American colleges and educational standards are considered low. There are no adequate facilities for post-high school education except correspondence courses. There are a few facilities available for learning the local language. Ilocano is the local dialect, but most Filipinos speak English. It is possible to obtain private tutoring in Spanish, although the language is not a necessity at the post. Many local residents speak Pilipino, which has been declared the national language in the Philippines, but the incentive to learn is lacking.

#### Recreation and Social Activities

Sports - Many recreational facilities are available at John Hay Air Base and U.S. Government personnel have the privilege of using them. For those interested in golf, John Hay justly boasts of one of the best golf courses in the Far East and PRS families are eligible to become members. Other recreational activities include tennis, archery, badminton, miniature golf, shuffleboard, roller skating, pool, ping pong, rifle range and bowling.

Touring and Outdoor Activities - There are good beaches at Lingayen Gulf, 32 miles from Baguio and at Poro Point, 36 miles from Baguio. Fishing is reported as excellent at the Hundred Islands, some three to four hours drive from Baguio. Bathing suits and fishing tackle should be brought to the post, but other sports equipment is generally available at the base exchange or may be available from Air Force Special Services for use at the base. Burnham Park, the Central Park of Baguio, has sprawling lawns around a lagoon and walks lined with aguho and eucalyptus trees. Adults and children alike are attracted by boating, roller skating rink, athletic bowl, well-shaded picnic grounds, bicycling, and scooter rides. There is a botanical garden with a natural garden featuring a rich collection of Philippine flowers. A

children's playground is a special attraction here.

Nearby places of interest are:

John Hay Air Base in Baguio is a small U.S. Air Force rest and recreation center for military personnel in the Far East, covering approximately 1,675 acres, of which 350 acres are improved. Facilities at John Hay are available to PRS personnel and the personnel of other U.S. Government agencies.

The Rice Terraces at Banaue, about 120 miles north of Baguio, are said to be the 8th wonder of the world. The journey to Banaue is not an easy one, covering rough and often one-lane dirt and gravel roads. A new hotel has recently opened at Banaue with first-class accommodations and many tourists are planning their trip to stay one or more nights there.

Crystal Caves are about 35 miles (approximately one hour by auto) from Baguio and face the China Sea. The area is popular among pleasure-seekers.

Manila is approximately 155 miles south, is a 5 to 6-hour trip by car or bus or one hour by plane.

Entertainment - Current U.S. movies are shown five nights each week at John Hay. Several theaters in Baguio offer English-language movies, although somewhat later than U.S. showings. Movies at John Hay run an average of 4 to 6 months after U.S. showings.

There are no operettas, concerts, museums or hobby club facilities. There are about four local restaurants, although it should be noted that some Americans prefer to eat only in their homes, at John Hay Air Base, or at the Baguio Country Club, because unboiled water and unsanitary conditions exist elsewhere.

Radio reception in Baguio is poor to fair. John Hay has an AM transmitter that relays the Armed Forces Radio programs originating at Clark Air Force Base. There are seven or eight radio stations in the City of Baguio. Direct television reception is poor, due to

the distance from the TV stations in Manila. This situation is rapidly changing. There are presently two TV relay transmitters operating near Baguio relaying Manila channels. CATV (community antenna TV) system is operating throughout part of the city and offers all Manila TV channels at rates comparable to those in the U.S.

Baguio, with its scenic beauty, is a natural for photographers. The Base exchange offers a good selection of cameras and film. Ektachrome Color film can be processed in Manila by Kodak, Philippines. Kodachrome is processed in Hawaii (via APO) or Australia (via Kodak Philippines). Black and white film is processed in Baguio. The few local festivities, including parades and Igorot dances, as well as the festivals in the lowlands, make interesting material for photographers. Baguio also has cockfights each Sunday afternoon throughout the year.

Social Activities - Almost all social activities of Americans are centered around the John Hay Air Base or the Baguio Country Club. Golf, bridge, bowling, archery, swimming, movies and tennis are some of the things which are available at these facilities. Church organizations and activities and the usual school events and productions are also enjoyed. There are two or three local movie houses which are sometimes patronized and small but spirited horses or ponies are available for adults and children at reasonable rental prices. Through participation in these activities, one meets Filipino residents and foreign and American nationals who are involved in mining, forestry, missionary work and with those Americans who have chosen Baguio for retirement.

---

#### CEBU: Consulate

---

#### Description of Post City

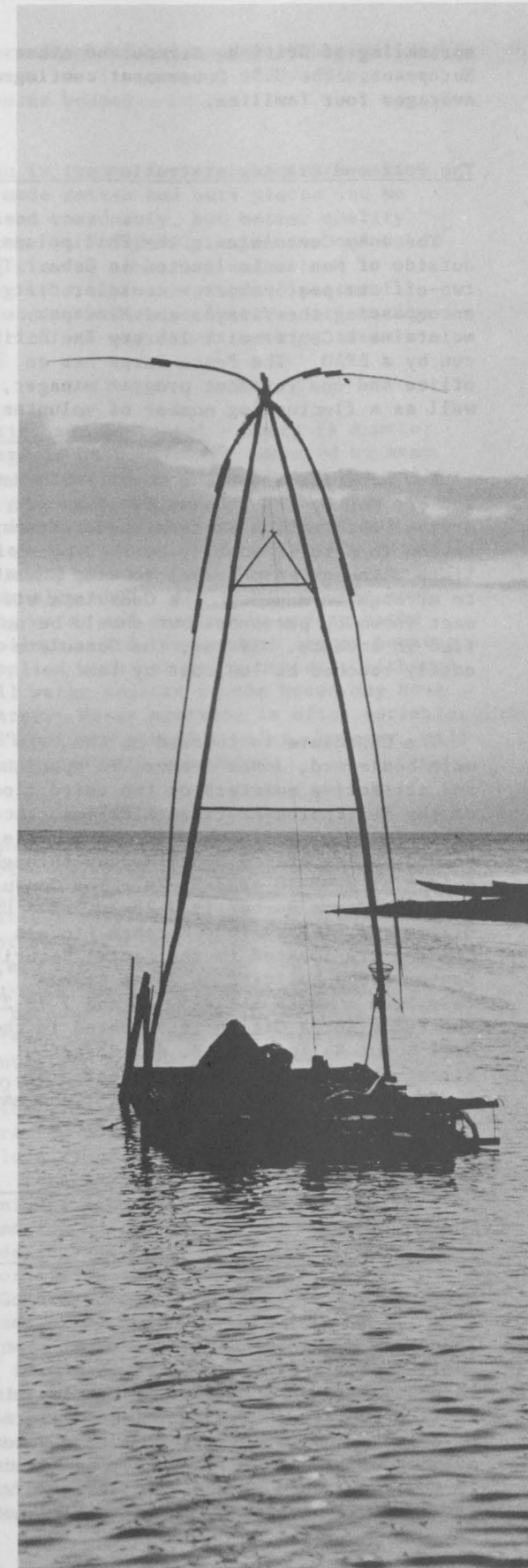
CEBU CITY is on the island of Cebu in the Visayas, those islands belting the "Belly" of the Philippines between Luzon and Mindanao, an hour's jet south of Manila. With a population of about 450,000, Cebu City is the second largest in the country and boasts of having had the earliest sustained contact with the "Western" (Spanish) world and of being the seat of Philippine Christendom. Magellan was killed here in 1521.

Cebu Island is long (140 miles), narrow (22 miles at the widest point) and densely populated (1.8 million) with a central spine of craggy hills ravaged by erosion. The city itself is sprawling and low with a bustling, congested business district around the port and residential areas creeping up surrounding hills. Because most of the town was leveled during World War II, the once Spanish character of Cebu is a recollection which finds form only in some old houses tucked away down back streets, in the exteriors of several churches and an 18th century triangular fort. Most of the city was reconstructed between 1945 and 1947 and suffers today because many buildings were hastily constructed of low quality materials and are now deteriorating. Deep ditches by the roadside often serve as the sewerage system. While a large share of the city consists of narrow, pitted, twisting streets lined with crowded, inadequate frame structures or adaptations of the nipa shacks found in rural villages, there is a rapidly increasing number of modern office buildings, wide avenues and substantial contemporary houses. Most of the main streets were resurfaced in 1973. Traffic is a hectic mixture of jeepneys, taxis, cars of every vintage, motorcycles and in some areas horse carts and motorized tricycles.

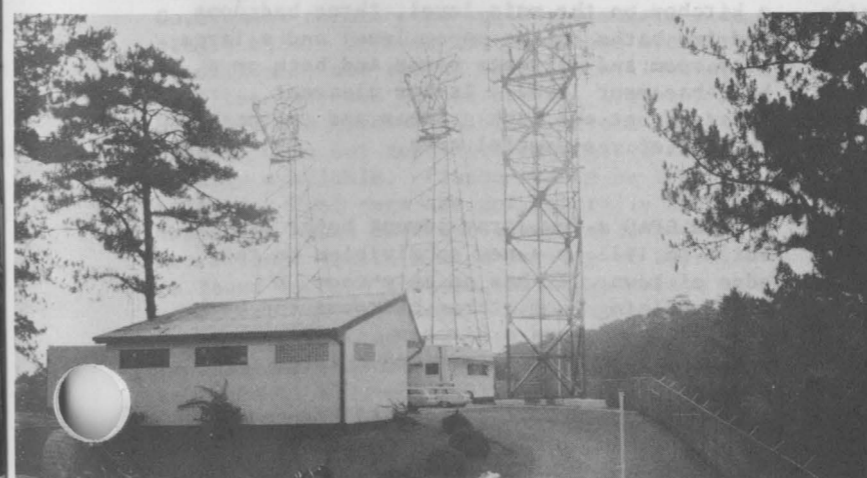
The great majority of Cebu City's residents are Cebuanos from Cebu province although an increasing number of people are migrating into the city from the neighboring islands of Bohol and Leyte in search of work. Family and Church are the centers of most people's lives. The Cebuano version of the Visayan language is generally used; it has the advantage of also being spoken in most of the Eastern and Central Visayas and in much of Mindanao. Almost everyone in Cebu City understands a certain amount of English, with the better educated using English naturally and effectively. Only a small number of families claiming some Spanish descent still use Spanish. There is a large group of Chinese who are generally engaged in wholesale and retail trade, and a small Indian community.

The European-American community is loosely defined. Because most foreign businesses now have Filipino managers, the American business community is very small. The largest single group are the Protestant missionaries. There are also some Catholic missionaries, graduate students, peace corps volunteers, spouses of Filipinos and a





**Top, left and right:** Makati Commercial Center, Makati. **Right:** Fishing rig in Manila Bay. **Left:** U.S.I.S. Offices in Davao City **Far left:** International Rice Research Institute, Los Baños, Laguna, **Below:** Philippine Relay Station, near Baguio.



sprinkling of British, German and other Europeans. The U.S. Government contingent averages four families.

#### The Post and Its Administration

The only Consulate in the Philippines outside of Manila is located in Cebu. The two-officer post covers a consular district encompassing the Visayas and Mindanao. USIS maintains a Center with library facilities run by a BPAO. The Peace Corps has an office and one resident program manager, as well as a fluctuating number of volunteers.

New arrivals enter the country via Manila and are met by the Embassy if advanced arrival information is furnished. Transportation to Cebu is usually by Philippine Air Lines although ship travel is also possible to arrange in Manila. The Consulate will meet incoming personnel but should be notified in advance. If not, the Consulate is easily reached at low cost by taxi.

The Consulate is located on the city's main boulevard, Jones Avenue, in spacious and attractive quarters on the third floor of the Philippine-American Life Insurance (Phil-Am Life) Building. It can be telephoned during office hours Monday through Friday at 7-95-10 or 7-95-24. The Consulate residence number is 7-28-20. The USIS Office and Library (the Abraham Lincoln Center) are located in the Social Security System (SSS) Building on Jones Avenue. The telephone numbers are 7-30-89 and 7-70-22. The Peace Corps Office is situated in the Girl Scout Building on P. del Rosario Street, telephone 7-61-43. Other U.S. Government personnel resident in Cebu may be reached through the Consulate.

#### Life at the Post

##### Housing

Temporary Quarters - Because of the post's small size, transient quarters are not maintained. New arrivals who overlap with their predecessors can anticipate several days in the hotel until the house becomes available. The Magellan Hotel, constructed in the early 60's is adequate, ranking with second-level hotels in Manila, but is not

in the luxury class. Rooms are air-conditioned. Daily rates are around \$12.00 double and \$10.00 single. The Rajah and Sky-vue Hotels are also used by transient Americans. The Consulate should be requested to book rooms as far in advance as possible. Hotel space in Cebu is often difficult to obtain because of an increased number of tourists and conferences. The Consulate has a "Survival Kit" including dishes for six, an iron, and linen for five which can be used until air freight arrives.

Permanent Housing - Rental housing is difficult to obtain in Cebu because most houses are owner occupied. At any given time, there is usually very little choice and rents are rising considerably. Many of the houses in Cebu were hastily constructed after World War II and are now deteriorating. Contemporary houses are being built, but they are often smaller than the older houses and generally are on smaller lots. Houses for the Principal Officer, the Consular Officer, the BPAO and the Peace Corps Representative are on U.S. Government lease.

The Principal Officer's house is a barny, old-fashioned white frame house with a large, lush garden conveniently located in an older residential area on a very busy side street. There are a reception room, one bedroom and bath, pantry and servants quarters on the first floor and a living-dining room, kitchen, three bedrooms, two bathrooms (showers only) and a small porch on the second floor. The house has a three car carport and its own well.

The Consular Officer's house is a more contemporary split-level with a living-dining room, a screened back veranda and a kitchen on the main level, three bedrooms and two baths on the upper level and a large play room and servants rooms and bath on a half-basement level. It has pleasant, fenced front and back gardens and is located in a quiet residential area.

The BPAO's low, gray cement house was built in 1971 in a new subdivision on the edge of town. It has an ante-room, a living-dining room, three bedrooms and baths, a small study, and a kitchen. There are minimal servants quarters and a large storage area in the basement. The house has a connecting carport and a small fenced

garden in which plantings are rapidly achieving their full size.

The Peace Corps Representative's house is in an older subdivision. A sprawling, low house in a large, tree filled garden, it has a living-dining room, a screened back veranda, three bedrooms, two baths, a kitchen, a two-room servants' quarters and bath, and a covered carport.

Furnishings - All U.S. Government leased housing in Cebu is basically furnished. This includes adequate simple rattan furniture, curtains, lamps, hot water heater, ceiling fans, one airconditioner per occupied bedroom (except for the Peace Corps house), stoves and refrigerators. The Principal Officer's house is additionally furnished with a second stove and refrigerator, china and glassware for 12 (but no cutlery), wooden plates and glasses for large parties and basic kitchen equipment. The BPAO's house has a second stove, freezer and a manual washing machine. More detailed information can be obtained from the officer being replaced.

As with any furnished quarters, however, it is desirable to bring those personal things which make a house feel like home. In choosing what to bring, it should be remembered that Cebu is tropical and everything is subject to mold, mildew, changes from extreme humidity to drought, dust, cane bore, termites and dryrot, as well as normal wear and tear. Kitchen gadgets are made in the Philippines and are not difficult to find but good pots and pans are better brought from home. Attractive tablemats and good quality locally made wooden plates, salad bowls and the like are plentiful. Bedding and towels should be brought. U.S. Government furnishings include standard size single beds. Because most bedrooms are air-conditioned, and second floor or hill-side dwelling bedrooms may be breezy, light blankets are needed. Baby furniture can be made in Cebu but good firm mattresses are not locally available. Pianos should be tropicalized. Wool rugs are not generally used. Abaca and sisal matting is available and attractive. Quite a wide variety of fabric is found in Cebu's shops, although choice of better quality drapery and slip-cover fabrics is limited and very expensive. It is easy and reasonable to have curtains, bedspreads, slip-covers and throw pillows made once suitable material has been found.

Officers should inquire about Embassy policy on re-slipcovering and draping particular houses.

Cebu is famous for its furniture making. Ready made rattan and buri pieces can be purchased reasonably, but better quality furniture is relatively expensive and takes a long time to construct unless one is willing to accept the standard pattern. Local woods, while lovely, are not usually kiln-dried and may later crack in steam heat.

Utilities and Equipment - There is a water shortage in Cebu which is tempered by many of the better houses having their own wells and a generally adequate water supply. Well water is normally safe for drinking but families with young children usually boil it as an added precaution. The mineral content is unusually high. All modern houses have running water and reasonably modern baths and toilets. U.S. Government leased housing is supplied with hot water heaters, although not all water sources in the house may have hot water. Water pressure is often variable. Not all private rental housing, however, will come equipped with hot water.

In Cebu, electricity is normally 220 volts, 60 cycles AC, with considerable voltage variation. Electricity rates are very high. The wattage supplied to any particular house may not be sufficient to run many appliances at once. From time to time the city suffers "brown-outs" on a pre-announced rotational basis because the generator capacity is impaired. Some houses have both 220 and 110 outlets. Adaptation of local current to 110 volts by outside transformer is not practical. Individual stepdown transformers for separate appliances are available locally or from personnel leaving Cebu. Personnel assigned to Cebu should communicate with the post for specific information on this subject. Personnel considering extra air conditioners for bedroom or living areas not so equipped by the U.S. Government will need to bring with them machines of at least 1 h.p., but should inquire about the practicability of such plans in advance. Some houses can make good use of dehumidifiers; specific inquiry should be made. Deep freezers are very useful. The fluctuating water pressure, unpredictable hot water supply and fluctuating voltage are hard on automatic washing machines, making semi-automatic or wringer

types more practical. Machines based on electric timing devices should not be brought. Washing machines are not absolutely necessary, however, because each household normally hires a lavandera, although a large family or one with a daily load of diapers may find a washer a boon. There is usually enough sunshine to make a dryer unnecessary. Blenders, hand mixers, electric frying pans and sewing machines are very useful and can be operated off of individual transformers if necessary. Such appliances should be brought or ordered by mail order. They are sometimes available through the PX. 110 irons are not available locally.

American TV sets can be used. A short-wave radio and hi-fi equipment, if desired, should be obtained prior to arrival at post. Periodically, such equipment can be purchased at the military bases.

In choosing a car to bring to Cebu, in addition to the information given under Transportation, p. 11, it is well to remember that unless one loads a vehicle onto a ferry or interisland boat, the extent of the drivable distance is Cebu and Mactan Islands. The vast majority of driving, therefore, will be short distances of the stop-start variety, on crowded, narrow, frequently pot-holed city streets.

Food - There is usually a multiplicity of fresh fruits and vegetables, mostly tropical. Specific varieties are seasonal. Lettuce and celery are flown in from Baguio. Cebu is famous for its mangoes, available nine months of the year. Except when the weather is unusually bad, there is a tasty variety of fish and seafood: shrimp, rock lobsters, several kinds of clams, squid and occasionally oysters. Local beef can be tasty and tender, although not always. Pork is excellent. Lamb is not available. Chicken is good but expensive. Most people buy fresh produce from the open-air Carbon Market. Because the market has no refrigeration and poor sanitary conditions, care must be exercised in the purchase and prompt processing of perishable food. Raw vegetables should be soaked in a clorox solution and, if possible, peeled before eating. (see p. 15 for more complete information.)

The U.S. Employees Association operates a cooperative Commissary and PX in Manila which Cebu based personnel with duty free

privileges are entitled to join. (see p. 23.) How much any individual family will use depends in part on its tastes and in part on the state of the Cebu market during their tour. The Commissary is particularly useful for cigarettes, liquor and specialty items. Because the availability of many items alters frequently, a letter or phone call down to Cebu from Manila before arrival will be very helpful in making an initial order. One should anticipate needs for some time in making an initial order. One should anticipate needs for some time in advance. Orders placed with the Commissary take from one to two weeks to reach Cebu by ship. Shipping charges are reasonable. It is not practical to ship refrigerated or frozen products to Cebu because of inadequate refrigeration service on ships. When traveling down by air, most people carry a supply of such things as cheeses, cottage cheese, yoghurt, baking chocolate, chocolate chips and lemons in an insulated bag. (See the food section of "Manila" for further details.)

Clothing - In general the same guidelines for clothing apply in Cebu as in Manila or any other tropical post with local variations. Clothing worn in Cebu should be washable. Most households employ fulltime laundresses whose work is usually good but rather hard on delicate materials. There is one adequate dry-cleaning establishment. Synthetics and knits are good for traveling but too hot for daily wear. There is no good storage of furs or large wardrobes of woolens.

Men - Male members of the Consulate and USIS usually wear washable trousers with a short-sleeve shirt with or without tie in the office. Coats are sometimes worn for formal calls or on trips to Manila and thus a few washable suits, including one dark one, should be brought to Cebu. The locally made Barong Tagalog or Filipino shirt (a sheer, embroidered, long-sleeve shirt worn outside the trousers) is worn for a variety of occasions, both day and night. Swimming and active sports clothes should be brought. Whites are necessary for tennis and pelota. Shoes, shirts, socks, underwear and neckties can be purchased or made in Cebu but this is rarely satisfactory as quality, sizes and cut do not generally suit Americans. It is recommended that a fairly large initial supply of summer clothing and a tour's worth of dress, sport and tennis shoes be brought to post.

Women - Daytime wear in Cebu is most informal,

frequently slacks, or long dresses of the "mumu" variety. There are a few occasions where a more traditional semi-dressed up daytime dress is called for. One black or subdued colored dress is necessary for funerals. Party wear ranges from the simple to the elaborate. Most evening wear is long. Three or four long washable dresses or skirt and blouse combinations are a helpful start.

Dressmaking costs are low when material is supplied but it may take some experimenting to find a dressmaker who suits a particular taste and figure. While a wide variety of materials is available locally, finding exactly what is wanted may necessitate hours of searching and eventual compromise. The PX in Manila sometimes has cloth but not always when an individual is in Manila. Dressmakers sew by picture, no patterns are necessary or available. Home-sewers should bring patterns. Most notions are usually available.

Nylon clothing is generally too warm for Cebu's climate. However, December and January can be rainy and cool and long sleeves or a stole in the evening or in air-conditioning will feel nice. Most synthetic knits are also too warm for regular wear, but one or two for wrinkle-free traveling are useful. Shoes for daytime, dress and sports wear can be a major problem. Those with small narrow feet can probably find a limited variety in local shops. In general, however, it is advisable to bring more shoes than it is estimated will be needed for the length of the tour. Shoes above size 8 are not available. Underwear, particularly bras, and swim suits should be brought. The heat causes rubber products to wear out exceptionally quickly. Shorts are usually worn only for sports, on the beach and in the house. Whites are mandatory for tennis and pelota. Sweaters and stoles are needed for trips to cooler places.

Children - Children usually wear what they would wear in the summer in the States. It is helpful to arrive with a good initial supply, although stocks can generally be replenished by being made or purchased locally. Ordering from the U.S. is also most satisfactory through the APO. Shoes are a serious problem. Increasingly, they can be purchased locally, but while cheap, the quality is poor and it is impossible to fit wide lasts. Teenagers going to Brent School will need warm clothes and blankets

(see the section on Baguio). Baby clothes are all handmade, plentiful and beautiful although not inexpensive. Diapers are available but very expensive. Swim suits can be bought here but not easily in larger sizes. Some cool weather clothing is needed for trips away from Cebu.

#### Supplies and Services

Supplies - Most necessities can be purchased in Cebu if one is willing to expend searching time and money. A wide variety of toiletries, cosmetics and home medicines are available at local stores. Many are manufactured by Philippine subsidiaries of known American brands at less than the statesides or PX cost. Imported cosmetics are very expensive and scarce. Bleaches, tints, dyes and other such hair preparations should be brought from the United States, but are also usually available in the PX. (See the medical section on p. 16 for prescription information.)

While a wide variety of cheap, poor quality toys can be found, better quality ones are not available or are exorbitantly expensive. For birthdays, Christmas, etc., it is wise to bring an initial supply. Children's books are not available. A small stock of clearly American gifts for weddings and adult birthdays is useful.

Other than long handled brooms, household items such as native brooms, brushes, baskets, soap, etc., are plentiful and inexpensive. Paper products vary in availability from time to time.

Other than teen-age type popular music, which is locally recorded, phonograph records and tapes or cartridges are available at high prices and should be bought from the United States. A limited selection is available at Clark and Subic Bay post exchanges.

U.S. postage stamps must be bought in quantity from the APO in Manila.

Basic Services: Barber shops and hair-dressers offer passable if not outstanding service; prices are extremely reasonable. Shoe and other leather goods repair is adequate. Laundries are used only by restaurants and occasionally by Consulate

personnel for heavy household duty drapery (such as slipcovers). Most homes have their own laundresses. Appliance repair is adequate for simple items, but good radios, hi-fi sets, and similar more complicated equipment may get rough handling and stocks of spare parts are generally limited. Development of black and white film is done adequately by machine process, color prints may be developed in Cebu but color slides must be sent to the U.S. or Australia for processing. Custom development and major camera repairs may be obtained satisfactorily in Manila.

Basic auto repair services are adequate. Spare parts for larger American cars may not always be available. There is a wide variety of artisans for watch and jewelry repair, carpentry, picture framing and miscellaneous household services. First National City Bank operates a branch where most U.S. Government personnel maintain accounts.

Domestic Help: The climate, the difficulty of marketing, the increased volume of household maintenance necessary in the tropics and a steady and unpredictable need to entertain make household help a necessity in Cebu. Servants are available but do not always have training and experience working for Americans. Few understand more than simple English. They are almost uniformly cheerful, willing and generally honest. Patience and a sense of humor on the part of the employer are well rewarded.

The size of the family will determine how many helpers are needed. Many households have a cook, a laundress, a houseboy or housegirl and a full-or part-time gardener. A single person can operate on a smaller staff. Families with young children usually hire a "yaya", children's nursemaid. Waiters and bartenders can be brought in for large parties. All wealthy Filipinos and many foreigners hire drivers. It is not necessary for official American personnel, however, unless the size and complexity of the family warrant it. Good drivers are hard to find and seldom have much mechanical knowledge.

#### Religious Activities

The Philippines is predominantly a Catholic country. The usual services are available, both in English and Visayan. In addition Cebu is a center for Protestant missionary activities. The United Church of Christ in the Philippines (an amalgamation of Presby-

terians, Congregationalists, etc.), the Missouri Synod Lutheran, several Baptist groups, a small Methodist congregation, the Philippine Independent Church (a separate Philippine church in communion with the Episcopalians), a variety of evangelical groups, the Mormons and the Seventh Day Adventists hold services, usually in English. A Protestant Sunday School and Catholic catechism classes are available for children.

#### Education

Dependent Education At Post - Except for families with young children, schooling in Cebu is cause for concern. There are a number of alternatives for elementary education. Most foreign children attend the Cebu International School, a private organization founded by the American community in 1924. English instruction using primarily American textbooks is offered for grades 1-7, with an eighth grade when there is demand. The school also has kindergarten and preparatory-first grade for 4 and 5 year olds. The administrative and teaching staff is Filipino. Americans are locally hired only if they are available in the community. Parent volunteers supplement the music and art programs. Total enrollment is just over 100, 55% of whom are foreign, principally American. A new parent school board is trying to encourage changes in authoritarian teaching methods and values and to improve the plant. Classes are held from 7:30 - 12:30 Monday through Friday with three afternoon sessions for art, music, physical education, etc.

A number of Catholic schools for boys or girls are available in Cebu although few foreign children attend them. Admission is by competitive examination. Particularly older students coming directly from American schools can expect to make adjustments both socially and scholastically. Classes tend to be large, learning is by rote, and competition in all aspects of school life is extreme. While in the best schools, most of the instruction is in English, an increasing amount of Pilipino language is used in the lower grades and the general level of English appears to be slipping. Schools start with kindergarten and go through the seventh grade in elementary school and then have 4 years at high school, omitting our 8th grade. Most foreign students find that these schools do not meet their long term needs. St. Theresa's College and College of the Immaculate Conception are considered the best girls' schools. The

best boys' school, Sacred Heart, a Jesuit institution, requires Chinese at all levels. The post education allowance covers costs at any of these schools.

High school alternatives are local Catholic schools, considerably more satisfactory for girls than for boys, correspondence work or boarding school. The only boarding school of international caliber in the Philippines which accepts non-missionary Americans is Brent School in Baguio (p.31). Away from post education allowances are authorized starting in the seventh grade. Tutors can be found to assist with correspondence work.

There are few nursery schools in Cebu and they do not generally conform to American ideas of "play schools".

It should be emphasized that the academic year in the Philippines now starts in June and finishes in March. All schools in Cebu function on this schedule. While it is possible to enter the International School at any time, late enrollment can cause considerable hardship. It is not always possible to enroll in other schools except at the beginning. Every effort should be made to arrive at post before the school year begins. Brent classes run from August to May.

Special Educational Opportunities - Special education for handicapped children or for those with learning problems is not available. Cebu has a number of colleges, universities and diploma mills. One of the better universities in the Philippines, the University of San Carlos (which is older than Harvard), is operated by German, Dutch and American priests of the Society of the Divine Word (SVD). Undergraduate and graduate courses are offered in a variety of subjects. Special students are accepted. The University of the Philippines also has a branch in Cebu although its present graduate offerings are mainly in the business and commerce fields. St. Theresa's College has a college department which would accept American girls as regular students provided they have taken and passed the Philippine College Entrance Examination. It is comparable to a Junior College Finishing School.

Tutors are available for Cebuano, Tagalog

(Filipino), Chinese and German. The Alliance Francaise offers classes in French.

Post Orientation Program - The number of official Americans at this post is so small that there is no formal course established. Time for personal basic briefing in Manila should be allowed before coming to the post. Employees of U.S. Government agencies here and their dependents receive orientation on life and work in Cebu by their very intensive and constant contact with "old timers" among the official community. So far, this form of orientation has proved more than adequate.

#### Recreation and Social Activities

Sports - Although there is more or less perpetual heat in Cebu, outdoor activity is possible all year round and many people indulge in more activity here than they would in other parts of the world. Public sports and recreational facilities are extremely limited. Consequently, American personnel and their dependents rely on a variety of private clubs: The Cebu Country Club, Club Filipino, Montebello, Liloan Beach Club, and Casino Español. These clubs offer varying facilities at varying membership costs. The decision on which club to join (because of expenses involved, Americans seldom join more than one) should be made after arrival at post when one has had time to become thoroughly acquainted with them.

There are two private 18-hole golf courses and a third one is under construction. Two clubs have fresh water swimming pools and the YMCA offers competitive swimming for youngsters. There are a number of small private tennis clubs, one or two of which have lighted courts. Pelota, a Spanish cross between jai-alai and squash, is very popular and a number of clubs and private individuals have courts. Whites are worn for both tennis and pelota. Badminton is available at one club. The city has a number of bowling alleys, all but one duckpins. Basketball is a popular spectator sport and there are opportunities for playing in amateur leagues.

The seas around Cebu are clear, warm and fish-laden. Beaches, mainly privately owned, are found both on Cebu and Mactan, within 45 minutes' to an hour's drive. There are a large number of coral islands and sand bars in the straits between Cebu and Bohol. Skin

diving opportunities are unparalleled. Equipment should be bought at a recognized dive shop in Manila, at Subic Bay or in the States. Some snorkeling gear is available locally but good quality equipment is very expensive and cheap equipment is dangerous. Opportunities to learn scuba diving are not particularly satisfactory. Many people find that attractive sea shells can still be found although commercial shell collectors are rapidly reducing the supply. Although the area is good for small boating, there are no docking facilities at present and boats have to be either brought in or made from scratch.

All kinds of sports equipment can be bought occasionally in Cebu, but at prohibitively high prices. The base exchanges in the Manila area carry sports equipment but may not have a particular item in stock at a given time.

Touring - Other than an often bouncy ride around the circumference of Cebu island (which would take about two days) or Mactan, there is no touring available without either a boat trip or an airplane ride. There are two shipping lines which run regular twice weekly service to Manila, a trip taking about 24 hours each way. Inter-island steamers of greater and lesser degrees of safety go from Cebu to many neighboring ports, some offering cabins but most with deck passage.

Entertainment - Away from home entertainment possibilities are limited. Cebu has about twenty motion picture theaters, of which only six are acceptable for entertainment purposes, as opposed to onetime adventures. These relatively good theaters show almost exclusively American pictures of recent vintage although the best movies are usually only one night stands. There are four or five restaurants serving reasonably good food and there are a number of nightclubs -- to only a few of which do gentlemen take their wives. All away from home activities are affected by the midnight to 4:00 a.m. curfew.

There is only one really good public library in Cebu, the USIS Library. Among university libraries, only that at San Carlos University is worth mentioning. It has a very good Filipiniana collection. There are no children's collections other than the small one at the Cebu International

School. Although several stores carry a reasonable selection of "popular" and detective story paperbacks, more serious reading matter and children's books are rarely available. Books deteriorate rapidly in this climate and anything especially valued should be brought with the awareness of the risk involved. Local newspapers are inadequate for national or international news. Stars and Stripes arrives by Embassy pouch from 24 to 72 hours after publication. No international newspapers are available except by subscription through the APO. Newsstand selections of magazines are very poor and out of date. APO subscriptions are reliable and arrive anywhere from two weeks to two months late. There are three local TV channels with occasional color broadcasts. Many of the programs are American re-runs. Short-wave radio reception is not always clear, although both VOA and AFRS programs, as well as Australian Broadcasting and BBC can be picked up. Local radio programming is mostly loud music.

#### Recreation and Social Life

Social Activities - Cebuanos are extremely hospitable and new arrivals will quickly find themselves drawn into a variety of social and representational functions. Social functions tend to center around parties and receptions offered in private homes and in the social clubs. Representational activities, in which both husband and wife are usually included, are much more varied and can range from the routine observance of national holidays to ribbon cuttings and building blessings to formal speeches. Fiestas at the barrio (village) level are common in the Philippines and foreigners sometimes receive invitations.

The newly arrived officer will find that there are few formal calls which must be made. However, he or she will find it most helpful to call personally upon leaders in the community, both Filipino and American. Officers will require calling cards in limited numbers. Two hundred is a more than sufficient supply. Unless an officer expects to make calls within the first week, adequate cards may be printed locally. Cards for wives are rarely used as it is not the practice for wives to pay formal calls. "Mr. and Mrs." informals are useful as invitations. Three hundred would constitute an initial supply although it is not difficult to get adequate cards of indifferent quality made up after arrival. Formal invitation cards are locally printed.

### DAVAO CITY: Branch Public Affairs Office

#### Description of Post City

DAVAO CITY IS LOCATED on a channel leading from the gulf of Davao on the Pacific Ocean side of Mindanao, the southernmost and second largest island in the Philippines. Davao City is the largest city in the world, geographically, covering 244,000 hectares, composed mostly of agricultural land. Population is about 400,000, the most populous city after Manila, although most of the people live in rural districts and on farmlands.

Its latitude of about 7° north and sea level altitude result in a hot tropical climate somewhat relieved by almost constant sea-land breezes. The area and city are engaged primarily in large-scale production of copra, bananas and abaca, logging and plywood manufacturing. The city is focused upon the support of these activities and is experiencing rapid economic and population growth. This growth has resulted in a steady increase in the size of the American community which in 1970 numbered about 150 persons in Davao City, including missionaries and private industry personnel. Americans are widely scattered throughout the city so that our "colony" appears much smaller than it really is.

#### Life at the Post

##### Housing

The USIS officer occupies a government-leased bungalow in the Insular Village, adjacent to the grounds of the Davao Insular Hotel and about 8 kilometers from the downtown area. The bungalow, situated on an 832-square meter lot, offers an ample representational area. It includes a study, two bedrooms, two bathrooms, a screened porch and carport, and quarters for two servants. The one USAID family at post occupies an attractive government-leased house, large enough for a family with two or three children, located in a somewhat isolated suburban (i.e., rural) area about 7 kilometers from the downtown area. Alternative housing is not really available.

Furnishings - The two government-leased

residences are furnished with basics, including refrigerators and freezers, window air-conditioners for the bedrooms and generally the study. Officers are authorized limited shipment of personal effects which should include cutlery, china, linen, lamps, pictures, and such other personal items required to make a house a home.

##### Food

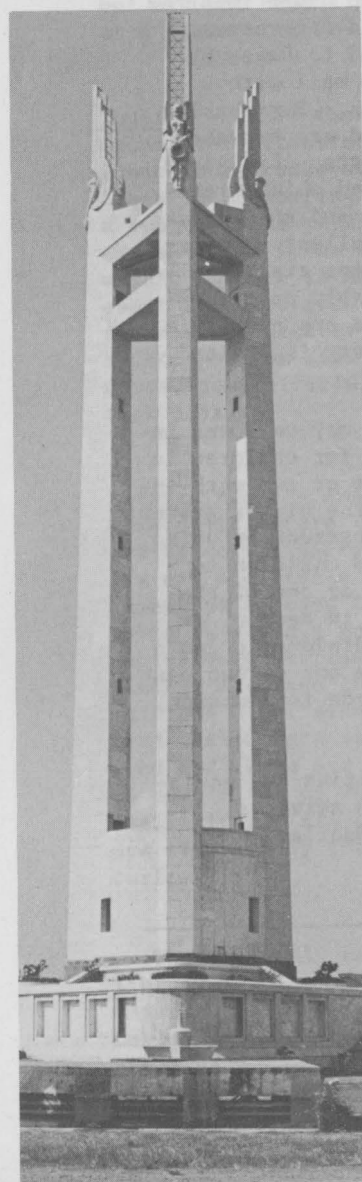
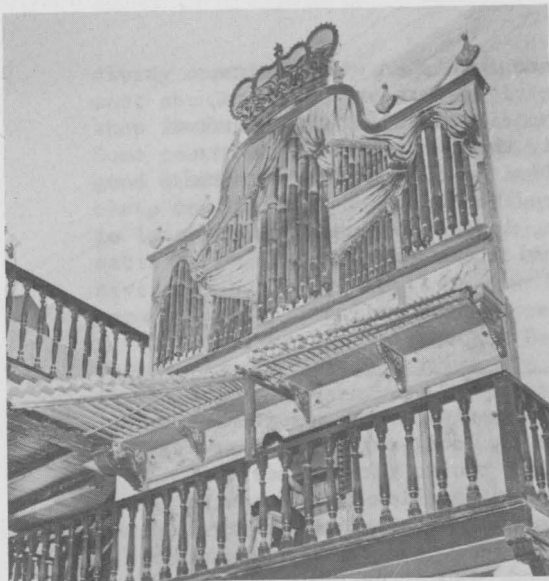
Most foods Americans are accustomed to are available in local markets and stores, though often at two to three times the U.S. cost. Most families rely upon the U.S. Employees Association Commissary in Manila for staples, canned goods, canned milk, baby food, frozen vegetables, meats such as lamb and bacon, and other imported items, including liquor and cigarettes. Non-perishables are shipped to Davao by boat and may be ordered by mail with delivery in about two weeks. Perishables are purchased in person and are brought to Davao by air in ice chests. Excellent locally grown beef, pork and chicken are available in American cuts and sold frozen. Fish and shellfish are excellent. Butter, eggs, bakery products and ice cream are of good quality and reasonably priced. Fresh fruits and vegetables are available all year round though variety is limited.

Adequate accommodations may be found in one of two private schools for children in kindergarten and grades one or two with instruction in English. For the higher grades, Americans rely upon home instruction using the Calvert system, or send children to either the American school or one of the very good Filipino schools in Manila, or to Baguio. Third country diplomatic families frequently rely on the one or two best local schools for upper grade instruction.

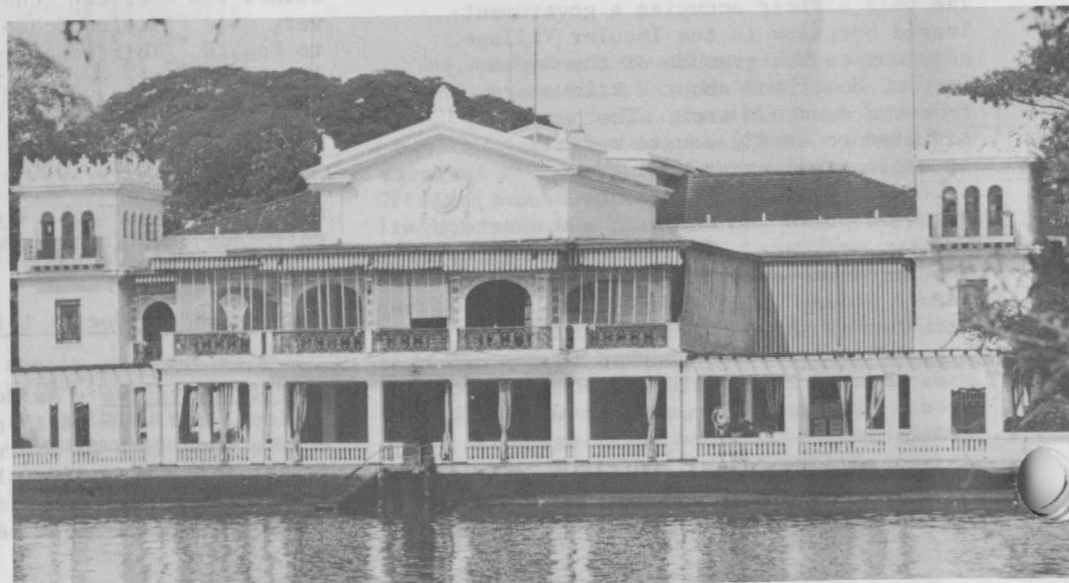
For information on utilities and equipment, clothing supplies and services, religious activities, see Manila.

#### Recreation and Social Life

Social Activities - As de facto principal officer, the USIS officer and his wife devote much time to their representational responsibilities. Social demands are relatively heavy, and the USIS Officer is often invited to speak before various



Clockwise from above left:  
Bamboo Organ at Las Piñas, built in 1814;  
Mount Mayon, Legaspi;  
Asian Development Bank, Manila;  
Malacañang, home of the Philippine President, Manila;  
Quezon Memorial, Quezon City.



clubs, university student groups, at openings of art exhibitions and charity affairs, and to participate in civic ceremonies.

For other American personnel, social life centers around the home and church of American personnel and includes contacts both with Filipinos and members of the American community. Churches of all denominations are available. Most Americans belong to at least one local club such as the Davao Beach Club, Apo Golf & Country Club or the Rotary Club; membership is by invitation, which is easily arranged.

Organized social affairs in Davao usually entail a good deal less formality than is encountered in the U.S. Dress is generally casual for men though more dressy for women, particularly in the evening where casual elegance is stressed. There are no restrictions other than the normal amenities. Filipinos are English-speaking and are pleasant companions when treated with equal respect.

Sports and Outdoor Activities - Swimming at the nearby beaches, the Davao Beach Club, or the Insular Hotel pool, and golf at either of two golf courses, are the primary outdoor sports. Tennis and bowling facilities are available, and hiking and picnicking opportunities are present. Some members of the American community own boats and opportunities abound for deep-water fishing and skin diving off the nearby islands. Lack of good highways means that travel to other interesting areas and cities on the island must be accomplished by air.

Entertainment - Davao City is lacking in entertainment variety. Amateur dramatic groups present frequent performances of good quality and American participation is welcomed. Other diversions are the movies and a number of nightclubs. Several excellent restaurants are available serving American, Chinese and Filipino food.

#### NOTES FOR TRAVELERS

##### Going to the Post

THERE ARE SEVERAL AIR ROUTES from the West

Coast of the United States to Manila. Normally one travels via Honolulu and Guam to Manila, via Seattle or Anchorage through Tokyo to Manila. When arranging air transportation to Manila and other posts in the Philippines, employees may realize substantial savings on travel to nearby cities through supplemental ticketing. For example, an employee traveling to Manila can pay an additional \$56.00 from his own funds and receive a coupon for one-way fare to Hong Kong. Good for one year, the coupon results in a \$33.70 saving on the round-trip fare to Hong Kong. Similar savings are available for trips to Taipei, Saigon, Bangkok, Singapore and Okinawa. Only one extra city can be added to the traveler's itinerary and savings vary according to the routing.

You should be dressed for hot weather upon arrival in Manila. Accompanied baggage should contain sufficient clothing to tide you over until air freight arrives, and it would be useful to have six passport-size black and white and four size 1x1" photographs for identification cards (although quick photo service is available near the Embassy). Air freight usually takes two to three weeks to arrive from the United States. You should include therein some extra linens, dishes, silverware, iron, hangers, and other items to make you comfortable until household effects arrive, although a limited Survival Kit is provided by the post. It is not difficult to ship effects to Manila due to its advantageous geographic location, its excellent harbor, and its servicing by major shipping companies and airlines with connections to almost all parts of the world. Manila is the port of entry for customs clearances of all consignments to posts within the Philippines. All consignments of staff posted to Angeles City, Baguio, Cebu, Davao and other points are cleared from Manila and forwarded from Manila to their destinations. The Embassy effects clearance and forwarding of effects of the following U.S. Government activities: State, Asian Development Bank (U.S. Delegation), Federal Aviation Agency, Internal Revenue Service, Philippines Relay Station, Regional Service Center, Treasury Department, Defense Attache, Drug Enforcement Administration, and U.S. Information Service. All USAID consignments are handled by USAID staff. The Veterans Administration provides its employees who are transferring to Manila with separate instructions regarding shipment of household goods and automobiles.

All household effects and automobiles should be consigned as follows:

Embassy personnel

- American Embassy, Manila, Philippines marked with initials of owner

USAID personnel

- USAID, Manila, Philippines marked with name of owner

Other agencies

- American Embassy, Manila, Philippines marked with initials of agency

The original copy of the bill of lading plus five copies, should be forwarded to the Embassy by air mail immediately after shipment is made. If personnel handle their own shipments, they should see that the bill of lading is forwarded without delay by the broker. The Embassy and AID arrange for release of cargo from the shipping company and for Philippine customs clearance. Advance notice of shipment is desirable. Liftvans offer more security than other types of packing, as small crates are sometimes pilfered on the piers. Since all Manila piers are not completely rehabilitated, some inbound crates are placed in open storage until delivery. Boxes or liftvans which are not waterproof often arrive with damaged household effects. This fact should be considered in connection with shipping valuable paintings or other items likely to be damaged by dampness, mold or mildew. Commercial storage facilities are available at rates comparable to U.S. rates. Manila is not a U.S. Government-authorized point for storage.

All official shipments originating in the U.S. for employees, with the exception of household effects shipped on a residence-to-residence basis, should be sent through the nearest U.S. Despatch Agency. These are located at 45 Broadway, New York, N.Y.; U.S. Customs Building, South Gay and Lombard Streets, Baltimore, Maryland; 555 Battery Street, San Francisco, California; and the U.S. Despatch Agent in New Orleans. Despatch Agencies should be promptly informed of contemplated shipments. Suppliers and packing concerns should be directed to contact the appropriate Despatch Agency before forward-

ing any merchandise to that Agency and to request from it marking and shipping instructions. Correspondence relating to shipments should be addressed to the Despatch Agency and not to the individual Despatch Agent by name.

Personal cars are handled in the same manner as other incoming surface shipments although it is not necessary to have them boxed. Hubcabs, windshield wipers, radio antennas, and outside mirrors should be stored in the car's locker compartment and the key and duplicates kept in the possession of the traveller. Such portable items could be forwarded to the traveller via APO facilities. Automobiles are serviced at a local garage before delivery to the consignee.

Portal-to-portal insurance is recommended for household furniture and automobiles. Occasionally damage and pilferage occur to vehicles on the piers. Air and surface shipments should be insured in the amount expected to be compensated in case of total loss. Insurance is the sole responsibility of the employee and shipping agents should not be relied upon to provide insurance.

Customs, Duties and Passage

Customs and Duties - Free entry privileges and general immunity from search, for baggage and personal effects, have been granted all groups of personnel on arrival. Similar privileges are accorded unaccompanied shipments of effects.

Since customs clearances are contingent upon an appropriate request being made to the Foreign Office and their granting exemption to customs, personnel should report the date and time of their arrival as well as the carrier at least two weeks ahead of time. On the shipment of effects, including unaccompanied shipments, the name of the carrier and the number and date of the Bill of Lading or Way Bill should also be reported at least two weeks prior to projected arrival so that proper clearances can be obtained.

Employees bringing pets (including birds) must: 1) notify the Embassy at least two weeks in advance of the date of arrival. Notification must include description of

the animal including breed, weight, sex and age. 2) obtain a certificate of good health in the country of departure and a record of anti-rabies shots for dogs, monkeys and cats. Prior to shipment, owners should obtain (in writing) an Import Permit from the Director, Bureau of Animal Industry, Manila (in the case of birds from the Director, Bureau of Plant Industry). When sufficient advance notice has been received, the Mission will secure the required Philippine Certificate of Tax Exemption for presentation to Customs to allow the free entry of the animal. The validation of the Philippine Embassy or Consulate of the animal's health certificate is not enough for the pets to be landed or allowed free entry into the country. An Import Permit and a Certificate of Tax Exemption are the only documents acknowledged by Quarantine and Customs personnel to allow the pets to be landed and released. When advance notice is not received and necessary Philippine clearance cannot be obtained, the animal will be held at Customs and the pet will be kept in quarantine. In cases where animals do not accompany travellers, it is the responsibility of the employee to see that health certificates and anti-rabies shot records are forwarded to the Mission in advance of the animal's arrival.

There are no limits placed upon the amount of U.S. currency or dollar instruments that may be brought into or taken out of the Philippines. Abroad, pesos should be purchased only from reliable banks or dealers as there is a series of obsolete bills still in circulation and a certain amount of counterfeiting exists.

Passage - Philippine visas are required for entry into the country. They are normally valid for one year. While such visa is not required for leaving the country, it must be valid for re-entry.

It is essential that all persons traveling via Japan be in possession of a visa prior to arrival. No visa is required for Hong Kong for stays of up to 30 days; visitor must, however, be in possession of a valid passport.

To facilitate clearance through quarantine proper, inoculations should be obtained before departure. All personnel must have a certificate showing smallpox vaccination within the last three years and a cholera

inoculation within the previous six-month period and at least six days prior to entering the Philippines. Typhoid, tetanus, diphtheria, and poliomyelitis inoculations are recommended for all international travel. In addition, personnel coming from areas infected with yellow fever must have, in addition to all of the above, a yellow fever inoculation within the previous ten-year period and prior to six days before entering the Philippines.

Firearms and Ammunition - Individuals may, with permission of the Chief of Mission, import certain firearms and ammunition into the Philippines. The chart below outlines the maximum number of weapons and ammunition which will be allowed. Guns which have been rendered inoperative or are part of a bona fide collection may be exempted from these limitations after correspondence with the Chief of Mission.

ITEM	QUANTITY	COMMENTS AND REMARKS
1-Pistols	1 ea.	One each pistol and
Revolvers	1 ea.	one each revolver per adult member of family not to exceed a caliber of .45
2-Rifles	1 ea.	One each per adult member of family not to exceed .308 cal.
3-Shotguns	1 ea.	One each per adult family member not to exceed 12 gauge.
4-Ammunition		May not exceed a total of 1,000 rounds for all types of firearms possessed.

No entry permit is necessary to secure passage through customs, but promptly upon clearing customs the guns must be registered with the Philippine Constabulary at Camp Crame, near Manila. The registration process may require ballistics testing at the Camp.

Personnel are reminded that strict regulations govern the import of firearms into the United States from any foreign post.

Currency, Banking, Weights and Measures

The official currency unit of the Philip-

pinos is the peso, which is divided into 100 centavos. Since establishment of the "floating rate" in September 1973 the exchange rate between the peso and other currencies has been dictated by market demands. For some time the rate has remained fairly stable fluctuating between ₱6.70 to ₱7.00 to \$1.00 for accommodation exchange purposes.

Standard units of measure in the Philippines are the gram, liter, and meter, although pounds, gallons and yards are often used.

Taxes, Excises, Exchange, Finance, and Sale of Personal Property

Restrictions

Embassy employees are exempted from payment of personal and income taxes of the Philippines. The usual sales tax must be paid on goods purchased on the local market but a tax exemption certificate may be obtained for large purchases. A tax refund on hotel charges also may be obtained upon issuance of a tax exemption certificate. Fees which are charged for specific services rendered by the Philippine Government must ordinarily be paid, including driver's license and automobile license plates. A valid U.S. driver's license or license from another country must be presented to obtain a Philippine driver's license without examination.

All owners of automobiles are required to insure their vehicles for a minimum of \$5,000 public liability and \$5,000 property damage or \$10,000 third party liability or the peso equivalent. Many people believe it is advantageous to obtain the insurance locally after arrival in Manila.

Non-tax exempt purchasers of automobiles of Mission employees are expected to pay taxes and customs duties at the time of sale.

The post's policies on importation and sale of personal property, including automobiles are as follows:

1. The importation, sale or export of personal property, including automobiles, of American employees and their dependents must be in accordance with the laws, regu-

lations and conventions of the host country.

2. Personal property, including motor vehicles, imported or otherwise acquired by American employees abroad, must be for their bona fide personal use or that of their dependents and not with intent of sale or transfer.

3. No employee will be permitted to sell any item of his personal property, including motor vehicles, for an amount in excess of the price he paid for it plus any taxes and customs paid by him, or for any valuable consideration in excess of the total of these amounts. However, an employee need not sell his personal property, including motor vehicles; he may export it, at his own or U.S. Government expense, under pertinent travel or shipping regulations. He must export it if required to do so by local laws, local government regulations, or rules established by the Ambassador.

In general, the concurrent ownership of more than one duty-free motor vehicle will not be authorized. (A motorcycle is classed as a motor vehicle.)

Facilities

The First National City Bank and Bank of America have branches in Manila; there are also numerous local banks. There is a nominal stamp tax on cashing dollar and peso checks; an additional fee is charged for cashing peso checks drawn on out-of-town accounts. Some employees find it desirable to maintain a local peso account. It is recommended that a dollar checking account in the United States be established to conveniently cover the expenses of settling in. The salaries of American personnel are paid in U.S. Treasury checks, which may be wholly or partially allotted to an account in the U.S., or paid in full in Manila. Checks can be cashed for dollars or pesos at the Embassy Cashing Facility or for pesos only at the AID Cashier's Office. Dollar funds may be remitted to the U.S. through bank drafts, U.S. postal money orders purchased from the APO, or by mailing salary or personal checks through the APO.

Philippine currency may be obtained on arrival through the Embassy or through AID's Cashier's Office, or, at slightly less favorable rates, at the hotels. As incoming personnel are met at the airport, it is not necessary to purchase pesos in advance.

Post differential is paid and, if eligible, transfer and temporary lodging allowance payments begin within a reasonable time after arrival. However, a longer delay results before salary payments commence. Because of this, it is wise to obtain a travel advance.

Paychecks of employees posted in Baguio City, Cebu and Davao are pouched from the Embassy payroll office. Employees in Baguio cash their checks at Camp John Hay, and in Cebu and Davao at local banks.

The following USIS films, the running time of each being about ten minutes, also provide information on the Philippines:

- White Gold of Basilan (rubber)
- Wealth of the Seas (fishing)
- Civic Action (barrio leader training)
- Born Rich (economic development)
- Green Heritage (timber resources)
- Operation Bayanihan (agricultural cooperatives)
- Let There Be Music (Philippine jazzfi)
- Wealth of A Nation (trained manpower)

LOCAL HOLIDAYS

THE FOLLOWING PHILIPPINE NATIONAL HOLIDAYS are observed by the Embassy. Nothing precludes persons arriving on these days. Most shops and service facilities are closed. All personnel are met by someone from the Embassy if prior information is received regarding date of arrival and means of travel.

January 1	New Year's Day
April 9	Bataan Day
Maundy Thursday*	
Good Friday*	
May 1	Labor Day
June 12	Independence Day
July 4	Philippine-American Friendship Day
November 30	Bonifacio Day
December 25	Christmas Day
December 30	Rizal Day

\*Thursday and Friday of Easter Week

BIBLIOGRAPHY

Aguinaldo, Emilio. A Second Look at America Speller, 1957  
The President of the First Philippine Republic (1898) presents his views on Philippine American relations from 1898-1957

Art Association of the Philippines. Art of the Philippines Manila: Associated Publishers, 1958

Belote, James H. and William M. Corregidor: The Saga of a Fortress. New York: Harper & Row, 1967

Bernstein, David. The Philippine Story New York: Farrar, 1947  
Very readable and stimulating general history; many acute insights.

Bowring, John. A Visit to the Philippines Manila: Filipiniana Book Guild III, 1963

Buss, Claude. The Arc of Cris. Doubleday, 1961

Asia in the Modern World. MacMillan, 1964

Butwell, Richard. Southeast Asia Today and Tomorrow Praeger, 1964

Careri, G. F. Gemelli. A Voyage to the Philippines Manila: Filipiniana Book Guild II, 1963

Carroll, John J. S.J. The Filipino Manufacturing Entrepreneur, Agent and Product of Change. Cornell University, 1965

Casper, Leonard. New Writing from the Philippines. A Critique and anthology Syracuse University, 1965

Cockcroft, John. The Philippines (extensive illustrations) Sydney, Australia: Angus and Robertson, 1968

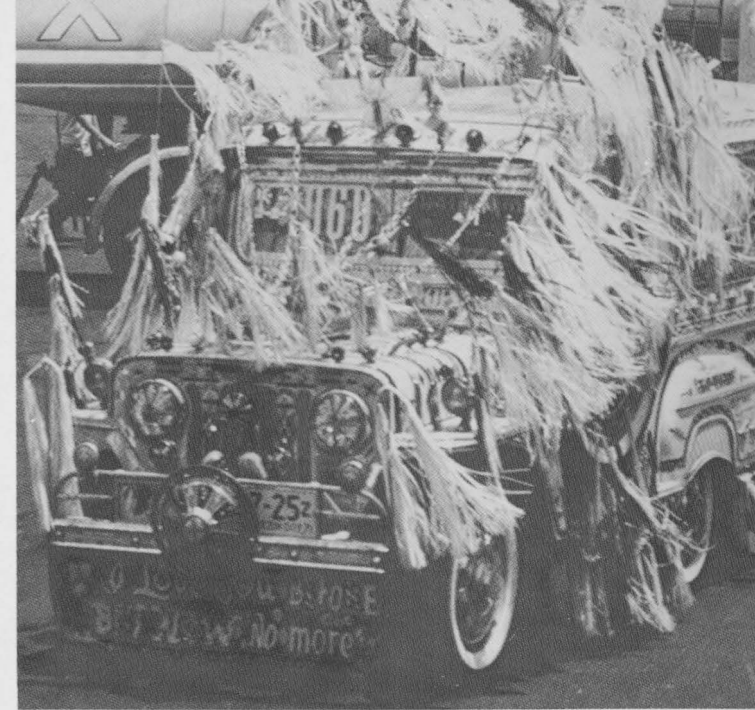
Constantino, Renato. The Filipinos in the Philippines and Other Essays. Manila: 1966

Corpuz, Onofre D. The Philippines (Modern Nations in Historical Perspective Series) Prentice-Hall, Inc., 1965

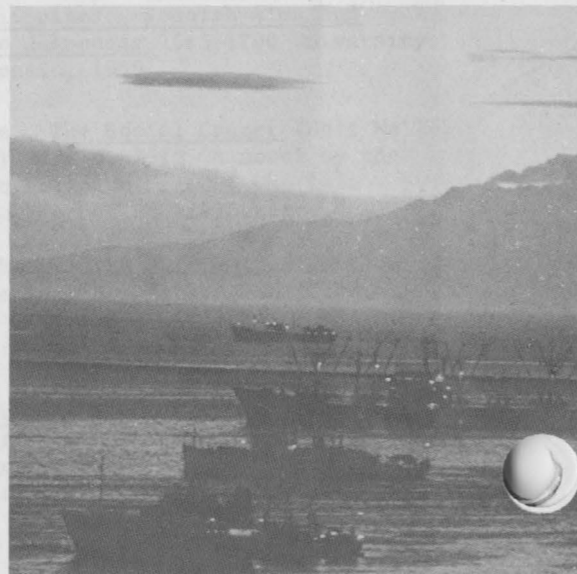
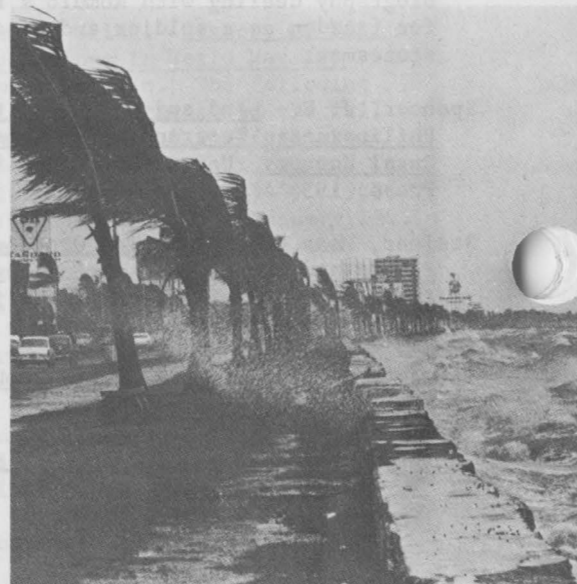
Costa, Horacio de la. Asia and the



- Philippines Manila: Solidaridad  
Publishing Company, 1967
- Cutshall, Alden. The Philippines, Nation of Islands. Van Nostrand, 1964
- Dela Gironiere, Paul P. Twenty Years in the Philippines Manila: Filipiniana Book Guild I, 1962
- Golay, Frank H. The Philippines: Public Policy and National Economic Development Cornell University Press, 1961  
The most recent economic study of the Philippines by a noted American scholar, very readable for both the economist and nonspecialist.
- Guerrero, Leon M. The First Filipino (A Biography of Jose Rizal) National Heroes Commission, 1963
- Guthrie, George M., Six Perspectives on the Philippines, Bookmark, Manila, 1971
- Hartendorp, A.V.H. Santo Tomas Story McGraw, 1964  
A detailed record of the events, conditions, morale, and organization among American and other prisoners in Santo Tomas Internment Camp during the years of the Japanese occupation of the Philippines.
- Hayden, J.R. The Philippines. A Study in National Development New York: MacMillan, 1954  
The classic work on the Philippines. An account of the steps towards independence, development of political parties, the role of education, and internal and international problems relating to independence.
- Huke, Robert E. Shadows on the Land: An Economic Geography of the Philippines Manila: Bookmark, 1963
- Hunt, Chester: Collier, Richard and others. Sociology in the Philippine Setting Manila: Alemar's, 1955. A textbook providing insight into Philippine social institutions.
- Joaquin, Nick. A Portrait of the Artist as a Filipino Manila: Alberto S. Florentino, 1966
- Keats, John. They Fought Alone New York: Lippincott Company, 1963
- Keith, Agnes. Bare Feet in the Palace.
- Little, 1955. Sympathetic report on current living conditions among the native Filipinos in Manila, the barrios, and jungles.
- Kroeber, A.L. Peoples of the Philippines New York: American Museum of Natural History (Handbook No. 8), 1943
- Levering, Robert. Horror Trek Horstmann, 1948. The tragic and heroic story of Bataan and Corregidor and the infamous Death March.
- Malcolm, George A. First Malayan Republic: The Story of the Philippines. Boston: Christopher, 1951. Covers a wide variety of subject matter. Excellent for the development of the judicial system and concepts.
- Morison, Samuel Eliot. History of U.S. Naval Operations in World War II. 15 Volumes. Little. The following volumes contain material on the fall and liberation of the Philippines in World War II. Vol. 3: Rising Sun in the Pacific 1931 - April 1942. 1948; Vol. 12: Leyte June 1944-January 1945. 1958; Vol. 13: Liberation of the Philippines: Luzon, Mindanao, the Visayas, 1944-1945. 1959.
- Nakpil, Carmen. Consensus of One, collected essays Solidaridad, 1967
- Pacis, Vicente Albano. Philippine Government and Politics Quezon City: Bustamante Press, 1962. A readable Philippine college textbook written by a respected Filipino political scientist.
- Phelan, John Leddy. The Hispanization of the Philippines: Spanish Aims and Filipino Responses 1565-1700 University of Wisconsin, 1959
- Rizal, Jose. The Social Cancer (Noli Me Tangere) Manila, 1912 A novel by the foremost Filipino writer, who is a Filipino "Father of his Country."
- Roland, Albert. The Philippines (Nations Today series) New York: MacMillan, 1967
- Romulo, C. P. Crusade in Asia: Philippine Victory Day, 1955. An account of how the Philippines was rescued after going to the very brink of Communist revolution.
- Romulo, C. P. Mother America. Doubleday, 1946
- Saleeby, N. M. History of Sulu Manila: Filipiniana Book Guild III, 1963
- Scaff, A. H. The Philippine Answer to Communism Stanford University Press, 1955. A scholarly account of the defeat of communism in the Philippines.
- Schurz, William Lytle. Manila Galleon. Dutton, 1959
- Smith, Robert Aura. Philippine Freedom, 1946-1958 Columbia University Press, 1958
- Spencer, Cornelia. Romulo: Voice of Freedom. Day, 1953. Popularized biography dealing with Romulo's flight for freedom as a soldier and as a statesman.
- Spencer, J. E. Land and People in the Philippines: Geographic Problems in Rural Economy University of California Press, 1954
- Steiner, Mona L. Philippine Ornamental Plants and Their Care. McCullough, 1952. The many colorful plants of the islands and how to take care of them.
- Stewart, Gertrude. Manila Cook Book Manila: Evening News, 1958
- Taylor, George E. The Philippines and the
- United States, Problems of Partnership. Praeger, 1964. A view of recent Philippines history which probes the new nationalism, the problems of economic growth and of Philippine defense. It explores the role that the Philippines may be expected to play in the future affairs of Southeast Asia.
- Toland, John. But Not in Shame New York: Random House, 1961  
The first six months after Pearl Harbor.
- Toland, John. The Rising Sun: The Decline and Fall of the Japanese Empire 1936-1945 New York: Random House, 1970  
University of Chicago, Philippine Studies Program. Area Handbook on the Philippines, 1956
- Vaughan, J. B. Land and People of the Philippines Lippincott, 1956
- Wolff, Leon. Little Brown Brother New York: Doubleday & Co., Inc., 1961.
- Zaide, Gregorio F. Philippine Political and Cultural History (2 volumes) Manila: Philippine Education Co., 1963
- Zabilka, Gladys. Customs and Culture of the Philippines Tokyo, Japan: Charles Tuttle & Co., 1967.



**Clockwise from above:** Manila Cathedral, within the old Walled City (Intramuros). Fish market in Baguio. Squatter dwellings in Tondo, Manila, Typhoon winds lash the seawall along Roxas Blvd., Manila. Manila Bay at sunset. Typical "sari-sari" store, offering a little of everything. "La Madre" Luneta Park, Manila. **Center:** Makati Commercial Center, modern shopping hub of the suburban villages. **Opposite page—Top left:** City Hall, Manila; **Top right:** Jeepney, Pasay City; **Bottom:** Cultural Center of the Philippines at sunset, Manila.



*Cover:* Johanna R. de la Peña,  
senior tourist receptionist of the  
Philippine Department of Tourism.