

**The original documents are located in Box 18, folder “9/19-22/75 - Oklahoma and California” of the Sheila Weidenfeld Files at the Gerald R. Ford Presidential Library.**

### **Copyright Notice**

The copyright law of the United States (Title 17, United States Code) governs the making of photocopies or other reproductions of copyrighted material. Gerald R. Ford donated to the United States of America his copyrights in all of his unpublished writings in National Archives collections. Works prepared by U.S. Government employees as part of their official duties are in the public domain. The copyrights to materials written by other individuals or organizations are presumed to remain with them. If you think any of the information displayed in the PDF is subject to a valid copyright claim, please contact the Gerald R. Ford Presidential Library.

Some items in this folder were not digitized because it contains copyrighted materials. Please contact the Gerald R. Ford Presidential Library for access to these materials.

## WITHDRAWAL SHEET (PRESIDENTIAL LIBRARIES)

FORM OF DOCUMENT	CORRESPONDENTS OR TITLE	DATE	RESTRICTION
Doc.	Motorcade Assignments (pages - 47)	9/19-22/75	B

File Location:

Shelia Weidenfeld Files, Box 18, Trips Files. Folder: 9/19-22/75 Oklahoma and California

## RESTRICTION CODES

JJO 11/22/16

- (A) Closed by applicable Executive order governing access to national security information.  
 (B) Closed by statute or by the agency which originated the document.  
 (C) Closed in accordance with restrictions contained in the donor's deed of gift.

THE WHITE HOUSE  
WASHINGTON

Joan Rivers

(213) 476-

2897



THE WHITE HOUSE  
WASHINGTON

PAULA UNRUH  
Okla. State Rep.  
Chairman.

I encouraged her not  
to feel she has to  
answer ?/s.

I did not criticize  
her.



THE WHITE HOUSE!

WASHINGTON

Home:

375-0896

\* Ann Germaine

Mounts Peninsula Herald  
Columns in tomorrow's paper

Helen Westland, old friend  
of Mrs. Ford talked with  
her.


---



THE WHITE HOUSE

WASHINGTON

September 18, 1975

MEMORANDUM FOR: S. WEIDENFELD  
FROM: RED CAVANEY   
SUBJECT: THE PRESIDENT AND MRS. FORD'S  
VISIT TO OKLAHOMA & CALIFORNIA  
Friday-Monday, September 19-22, 1975

You are manifested on Air Force One and are to report to the Distinguished Visitor's Lounge at Andrews AFB no later than 1:45 pm. Air Force One is scheduled to depart Andrews AFB at 2:45 pm and arrive Oklahoma City at 4:30 pm CDT.

Air Force One is scheduled to return to Andrews AFB at 11:45 pm on Monday, September 22, 1975.

BAGGAGE CALL: Place all baggage, unlocked, in the West Basement no later than 12:00 noon or carry to Andrews AFB no later than 1:45 pm.

WEATHER REPORT: Oklahoma City: Partly cloudy, 50% chance of rain, high in 70s. Temperatures in California may range from mid 80s to a nighttime low of mid 50s.

ATTIRE: Business suit. Casual attire for those overnighting in Carmel.

A Detailed Guest and Staff Schedule will be handed out on Air Force One.

Snacks will be served en route Oklahoma City.

THE WHITE HOUSE

WASHINGTON

THE PRESIDENT AND MRS. FORD'S VISIT TO  
OKLAHOMA AND CALIFORNIA

Friday through Monday  
September 19 - 22, 1975

DAY # 1

Departure: 2:25 p.m.

From: Terry O'Donnell

BACKGROUND

WASHINGTON, D. C. DEPARTURE

Departure from the South Lawn will be at 2:25 p.m. Upon arrival at Andrews Air Force Base, you will join Sen. Henry Bellmon (R-Okla); Sen. Dewey F. Bartlett (R-Okla); Rep. Tom Steed (D-Okla); Rep. John Jarmon (R-Okla); Rep. Theodore Risenhoover (D-Okla) who will be your guests aboard Air Force One en route Tinker Air Force Base, Oklahoma City. Flying time will be 2 hours, 45 minutes. Time change: -1 hour.

TINKER AIR FORCE BASE ARRIVAL

You will arrive at Tinker Air Force Base at 4:30 p.m., CDT. You will be met by Paula Unruh, GOP State Chairman; William Gooden, GOP State Vice-Chairman; H.H. Champlin, GOP State Finance Chairman; "Skip" Healy, National Committeeman and Grace W. Boulton, National Committeewoman.



## OKLAHOMA STATE FAIR

You accepted the invitation of former Governor David Hall to attend this year's Oklahoma State Fair. Governor David L. Boren reissued the invitation upon his assumption of the Office of Governor. You will be visiting the fair on its opening day and, following a tour, will address approximately 25,000 people who will be gathered under the newly created Independence Arch. In honor of the Bicentennial, the theme of this year's 69th State Fair of Oklahoma is "Spirit of American Exposition." In addition to dedicating the newly constructed Independence Arch and Constitution Fountain, you will light a huge (8-1/2 feet high by 5-1/2 feet round) birthday cake. Governor Boren, Senator Bartlett, Senator Bellmon and Congressman Jarmon will accompany you throughout your stay at the Fair.

The Fair is the fifth largest in the U.S. and will have the largest international livestock show in the world. As a chartered, self-supporting, non-profit corporation, it is one of the few totally independent State Fairs. It accepts no funds from the State. Its purpose is to serve as a public institution to reflect and promote Oklahoma's progress in Agriculture, industry, commerce, education and culture and to provide a medium of social exchange. The facilities of the Fair are used all year round by the City. Admission to the fair is \$1.00 but everyone will be admitted free on the day of your visit.

The Oklahoma State Fair is claimed to be the first Bicentennial State Fair in the Nation. The Independence Arch bears the inscription from the Declaration of Independence, "When in the course of human events....". The Constitution Fountain will feature the entire Preamble of the Constitution around its circumference. The Old Guard Drum and Fife Corps from Washington, D.C. will take part in the ceremony. Also permanently displayed will be four 100-year-old carriages.

LBJ visited the Fair in 1965 and while there, borrowed someone's horse and rode across the fair grounds. Mrs. Nixon attended the Fair several years ago as First Lady. President Truman also attended when he was campaigning against Dewey.

Some points of State pride: Oklahoma ranks second in the Nation for breeding quarter horses, third in the production of wheat, third in the production of natural gas (following Texas and Louisiana) and according to the latest polls, the "Sooners" are first in the Nation in College Football. Bryce Harlow's brother, James, is on the Fair Board and will be attendance for your speech. Last December Steve Ford attended Oklahoma City's "World Series of Rodeo". Patience Latting (D) is Mayor of Oklahoma City.

GOP FUNDRAISERS

Following the Fair you will attend two fundraiser receptions at the Lincoln Plaza Hotel in Oklahoma City. Upon arrival you will attend the joint "Gold Trunk and Diamond Trunk" reception for \$1,000 and \$3,000 contributors respectively. Approximately 50 are expected to attend (no remarks). Next you will attend the "Bronze and Silver Trunk" reception. The "Bronze Trunk" is made up of contributors of \$100.00 to \$500.00 and the "Silver Trunk" is made up of contributors of \$500.00 to \$1,000.00. About 1,000 are expected to attend. (Remarks) Paula Unruh, Oklahoma State Chairman, will be your hostess for both receptions. She was elected in March as the first woman State Chairman in Oklahoma's history. She was former campaign manager and staff member for Page Belcher. Bud Champlin is State Finance Chairman. Other key personages: Nancy Apgar, County Chairman, Bill McLean, Event Chairman; Mrs. Jose Freede, Reception Co-chairman; Mrs. Betty Ellis, Reception Co-chairman. Jack Black is Chairman of the Oklahoma President Ford Finance Committee (hosted last Saturday's VP fundraiser).

Skip Healy, the National Committeeman and Grace Bowlton, the National Committeewoman are openly pro-Reagan. Reagan will be in Tulsa on November 14th for a fundraiser. Vice President Rockefeller visited Oklahoma last Saturday to attend the Oklahoma-Oregon football game and a Norman, Oklahoma fundraiser.

You visited Oklahoma City (Fundraiser breakfast and campaign rally) on October 22, 1974 on behalf of Senator Bellmon and other GOP candidates.

Background information on the Oklahoma Republican Party is attached at Tab A.

LOS ANGELES ARRIVAL

Following your 2 hour, 45 minute flight from Oklahoma City, you will land at Los Angeles International Airport at 9:45 p.m. PDT and proceed by motorcade to the Century Plaza Hotel where you will remain overnight. There are no scheduled activities in Los Angeles on Friday night.

WASHINGTON, D. C. DEPARTURESEQUENCE:

2:25 p.m. You and Mrs. Ford board helicopter on South Lawn and depart en route Andrews Air Force Base.

2:45 p.m. Arrive Andrews AFB, board Air Force One, and depart en route Tinker AFB, Oklahoma City, Oklahoma.

(Flying Time: 2 hours, 45 minutes)  
(Time Change: - 1 hour)

PRESIDENTIAL GUESTS

Senator Henry Bellmon (R-Okla.)  
Senator Dewey F. Bartlett (R-Okla.)

Rep. Tom Steed (D-Okla.)  
Rep. John Jarmon (R-Okla.)  
Rep. Theodore Risenhoover (D-Okla.)

TINKER AIR FORCE BASE ARRIVAL

4:30 p.m. Arrive Tinker AFB, Oklahoma City.  
CDT  
Advanceman: OPEN PRESS COVERAGE  
L. Eastland OPEN ARRIVAL

You will be met by: MGEN James G. Randolph, Wing Commander; Colonel R. Marshall Engelbeck, Base Commander; CMSGT William Colbert, Senior NCO; Paula Unruh, GOP State Chairman; William Gooden, GOP State Vice-Chairman; H.H. Champlin, GOP State Finance Chairman; "Skip" Healy, National Committeeman; and Grace W. Boulton, National Committeewoman.

4:40 p. m.

You and Mrs. Ford board motorcade and depart Tinker AFB en route Oklahoma State Fairgrounds.

(Driving Time: 20 minutes)

OKLAHOMA STATE FAIR

5:00 p. m.

Motorcade arrives Beef Barn, Oklahoma State Fairgrounds, where you and Mrs. Ford will be met by Mr. and Mrs. Dean McGee, President of the State Fair; and Mr. and Mrs. Sandy Saunders, Executive Director of the State Fair.

OPEN PRESS COVERAGE  
CLOSED ARRIVAL

Escorted by the aforementioned greeters, you and Mrs. Ford will be accorded a brief tour of the livestock area, which includes visits to the following areas:

Cattle Grooming  
Horse Grooming  
Junior Beef Livestock &  
Beef Livestock

PRESS POOL COVERAGE

5:15 p. m.

You and Mrs. Ford conclude your tour of the livestock area and enter FFA-sponsored Children's Barnyard.

PRESS POOL COVERAGE

NOTE:

Several hundred youngsters will be on hand as you and Mrs. Ford tour this facility containing young farm animals.

5:25 p. m. You and Mrs. Ford thank your escorts, board motorcade, and depart Barn area en route Independence Arch and Constitution Fountain.

5:30 p. m. Arrive Independence Arch.

OPEN PRESS COVERAGE  
CROWD SITUATION

"Ruffles and Flourishes" by the Edmund High School Band  
Announcement  
"Hail to the Chief"

5:31 p. m. You and Mrs. Ford proceed to the platform and are seated, greeting Governor David Boren (D-Okla.) on the platform.

NOTE: En route the platform, you will be accorded a 21-gun salute by the Fort Sill saluting battery.

5:35 p. m. National Anthem.

5:37 p. m. Welcoming remarks by Edward L. Gaylord, Incoming State Fair President.

5:39 p. m. Introduction of platform guests.

5:43 p. m. Brief remarks by Governor David L. Boren.

5:45 p. m. Brief remarks by Senator Bellmon, concluding in introduction of you.

5:47 p. m. PRESIDENTIAL REMARKS.

FULL PRESS COVERAGE

5:57 p. m.

Your remarks conclude. You return to your seat.

5:58 p. m.

Introduction of Dean McGee, Outgoing State Fair President, who will explain the significance of the Independence Arch, Constitution Fountain, and the Birthday Cake.

6:00 p. m.

You and Mrs. Ford are escorted by Dean McGee to the electrical switch, which you throw to light the birthday cake candles and activate the fountain.

## OPEN PRESS COVERAGE

6:03 p. m.

You and Mrs. Ford are escorted by Dean McGee to the birthday cake, where Mrs. Ford will cut the first slice.

NOTE:

The remainder of the cake will be served to the audience after you have departed.

6:06 p. m.

You and Mrs. Ford depart platform en route motorcade, board, and depart Independence Arch en route Lincoln Plaza Inn.

(Driving Time: 25 minutes)

6:35 p. m.

Arrive Lincoln Plaza Inn where you will be met by Mr. Bill McLean, Dinner Chairman who escorts you to your Suite for brief personal time.

PERSONAL TIME: 10 minutes

OKLAHOMA FUNDRAISERS

6:50 p. m.

You and Mrs. Ford depart Suite en route Blue Room to attend Oklahoma State GOP Private Reception.

NOTE: Bill McLean, Paula Unruh (GOP State Chairman) and Nancy Apgar (GOP County Chairman) will greet you and Mrs. Ford outside your Suite and serve as your escorts for the evening.

6:52 p. m.

You and Mrs. Ford arrive Blue Room and informally greet guests.

PRESS POOL COVERAGE  
ATTENDANCE: 50

7:20 p. m.

You and Mrs. Ford and your escorts depart Blue Room en route GOP Reception in Independence Hall.

7:25 p. m.

Arrive Independence Hall and informally greet guests at GOP Reception.

OPEN PRESS COVERAGE  
ATTENDANCE: 1,000

7:50 p. m.

You and Mrs. Ford are escorted to the platform for seating. Your seat is the second seat, stage right of the podium between Bill McLean and Sen. Bartlett. Mrs. Ford is in the first seat, stage left of the podium next to Senator Bellmon.

7:51 p. m.

Welcoming remarks and introduction of VIP's by Bill McLean.

7:54 p. m.

Brief remarks by Rep. Jarman.

7:56 p. m. Introduction of Senator Bellmon  
by Paula Unruh.

7:57 p. m. Brief remarks by Senator Bellmon.

8:00 p. m. Introduction of Senator Bartlett by  
Bill McLean.

8:02 p. m. Brief remarks and introduction of you  
by Senator Bartlett.

8:05 p. m. PRESIDENTIAL REMARKS.

FULL PRESS COVERAGE.

8:20 p. m. Remarks conclude; you remain at the podium  
while Bill McLean thanks you.

8:22 p. m. You and Mrs. Ford depart platform en route  
motorcade for boarding.

NOTE:

En route, you and Mrs. Ford  
will pause in the Senate Room  
where you will be met by the  
following representatives of the  
Oklahoma American Indian  
Community:

Mr. and Mrs. Bert David Seabourn,  
noted artist  
Marian K. Wolf, Fashion Designer  
Darlene Landsberger

You will be given an Indian artifact  
and an Indian shirt.



8:30 p.m.

Motorcade departs Lincoln Plaza Inn en route Tinker Air Force Base.

(Driving Time: 25 minutes)

8:55 p.m.

Arrive Tinker Air Force Base.

OPEN PRESS COVERAGE  
CLOSED DEPARTURE

9:00 p.m.  
CDT

You and Mrs. Ford board Air Force One and depart en route Los Angeles International Airport, Los Angeles, California.

(Flying Time: 2 hours, 45 minutes)  
(Time Change: - 2 hours)

LOS ANGELES ARRIVAL  
9:45 p.m.

Air Force One arrives Los Angeles International Airport, Los Angeles, California.

OPEN PRESS COVERAGE  
CLOSED ARRIVAL

9:50 p.m.

You and Mrs. Ford board motorcade and depart Los Angeles International Airport en route Century Plaza Hotel.

(Driving Time: 25 minutes)

10:15 p.m.

Arrive Century Plaza Hotel where you will be met by William Bryant, General Manager.

PRESS POOL COVERAGE  
CLOSED ARRIVAL

Proceed to Suite.

10:20 p.m.

Arrive Suite.

OVERNIGHT.

## OKLAHOMA REPUBLICAN PARTY

Oklahoma Republicans are on the whole conservative, and the Oklahoma Republican Party has had what RNC sources describe as a heavy "philosophical orientation" for the past six years under former State Chairman, Clarence Warner. Under the leadership of the new State Chairman, Paula Unruh, the State GOP is becoming increasingly "organization oriented," and RNC field reports indicate that the RNC/State Committee relationship is the best it has been in a number of years. Mrs. Unruh is described as an attractive, well-organized, strong State Chairman who is moving aggressively to prepare the State Party for the 1976 elections. A full-time, paid chairman, she has undertaken a heavy travel schedule around the state to work personally with county Party leaders and elected officials. As part of this new effort, a series of statewide seminars and workshops will take place beginning next week. A moderate, she received strong support in her bid for the chairmanship from Senator Bellmon, and she is reported by RNC sources to be unpopular among some of the Party's conservatives. She has publicly maintained neutrality concerning the GOP Presidential nomination, although she is said privately to support your candidacy.

## Oklahoma Republican Party

The majority of the Party hierarchy, according to RNC field reports, are supportive of Ronald Reagan's potential bid for the Presidential nomination. Reagan is openly supported by the Republican National Committeeman and Committeewoman, and his committee in the State was briefly chaired by the former GOP State Chairman, Clarence Warner. It is now headed by Albert Snipes, an insurance man and former GOP County Chairman.

The State of Oklahoma will be represented by 36 delegates at the Republican National Convention in 1976. There is no primary and delegates are chosen by State and Congressional District conventions. Field reports indicate that in the event of a contest for the Presidential nomination the delegates will probably split evenly between those supporting your candidacy and those favoring Ronald Reagan.

Congressman John Jarman is the only major Republican officeholder to have publicly stated his support for your candidacy at this time. He has written you to that effect. It is felt that his support will be very helpful in the State after the National Convention. Neither Senator Bartlett nor Senator Bellmon have publicly indicated whom they will support in event of a contest for the Presidential nomination, and according to field sources both are deliberately remaining neutral at this time.

## Oklahoma Republican Party

The State Party is in the black financially, and just completed two fundraising events last weekend with Vice President Rockefeller as the focal point. State Party headquarters estimates that around \$50,000 was grossed at those events in Norman and Enid. Ronald Reagan will visit Oklahoma for a fundraiser in Tulsa on November 14th.

According to field reports, the Rockefeller visit was not received well by conservative elements in the Party and served to exacerbate bad feelings of those elements toward the moderate State Chairman, Mrs. Unruh.

There are no major statewide races in 1976 in Oklahoma. Opportunities for Republican gains in the State Legislative races are thought by RNC sources to be marginal except in the major metropolitan areas of Tulsa and Oklahoma City. The State Legislature is presently heavily controlled by Democrats (State Senate: 6R, 18D; State House, 25R, 76D).

In the 1976 Congressional races, RNC and state Party sources indicate that a concentrated effort will be made to win back the 6th Congressional District seat formerly held by Republican Happy Camp, who was defeated in 1974. At this time, no GOP candidate for that seat has emerged, however. RNC sources feel that John Jarman's 5th District seat can be retained by Republicans when Jarman retires at the end of this session. It is also thought that a formidable Republican candidate would have good potential in the 1st District against Democrat James Jones.

THE WHITE HOUSE  
WASHINGTON

September 15, 1975

MEMORANDUM: FOR THE PRESIDENT

VIA: MR. DONALD RUMSFELD

FROM: TERRY O'DONNELLI ~~TD~~

SUBJECT: Oklahoma-California Summary Schedule  
September 19 - 22, 1975

FRIDAY, SEPTEMBER 19, 1975

2:25 p.m. Depart South Lawn via helicopter en route Andrews AFB. Board Air Force One and depart en route Tinker Air Force Base, Oklahoma City. Travel time: 3 hrs. 5 mins. Time Change: - 1 hour.

4:30 p.m. Arrive Tinker Air Force Base, Oklahoma City. (Meet Senators Bellmon, Bartlett and Rep. Jarmon).

5:00 p.m. Arrive Oklahoma State Fairgrounds. Tour.

5:30 p.m. Arrive Independence Arch for Dedication Ceremony. Remarks.

6:40 p.m. Arrive Lincoln Plaza Inn Hotel to attend 6:50 p.m. Oklahoma State GOP Private Reception. Attendance: 100. Duration: 30 minutes.

7:25 p.m. GOP General Reception. Attendance: 1,000. Remarks. Duration: 60 minutes.

8:30 p.m. Depart Lincoln Plaza Inn en route Tinker Air Force Base. Board Air Force One and depart en route Los Angeles International Airport. Travel Time: 3 hours, 15 minutes. Time Change: - 2 hours.

9:45 p.m. Arrive Los Angeles International Airport.

10:15 p.m. Arrive Century Plaza Hotel.  
OVERNIGHT.

SATURDAY, SEPTEMBER 20, 1975

- 7:25 a.m. Depart Suite en route Los Angeles Times Editorial Board Breakfast in your Hotel. Q and A. Duration: 1 hour.
- 8:40 a.m. Depart Suite for Bob Abernathy Interview in Hotel. Duration: 30 minutes.
- 9:20 a.m. Depart Century Plaza Hotel via Motorcade en route Pepperdine University (Malibu Campus). Driving Time; 50 mins.
- 10:10 a.m. Arrive Pepperdine University - Dr. Banowsky's Residence to attend informal Brunch. Remarks. Duration: 1 hour, 10 mins. Attendance: 250.
- 11:20 a.m. Depart Dr. Banowsky's Residence en route Firestone Field House for Dedication Ceremony. Remarks. Duration: 1 hour, 15 mins.
- 12:40 p.m. Depart Pepperdine University en route Los Angeles International Airport. Board Air Force One and depart en route Monterey Peninsula Airport. Travel Time: 1 hour, 25 minutes.
- 2:05 p.m. Arrive Monterey Peninsula Airport, board motorcade and depart en route Firestone Residence (Ryomi) in Pebble Beach.
- 2:20 p.m. Arrive Firestone Residence.
- 2:50 p.m. Depart Firestone Residence en route Cypress Point Golf Course for golf with Jack Westland, Dee Keaton, and Tommy Taylor.
- 8:10 p.m. Arrive Residence.
- 8:30 p.m. Private dinner guests arrive Residence.
- 11:15 p.m. Dinner concludes.  
OVERNIGHT.

SUNDAY - SEPTEMBER 21, 1975

- 8:30 a.m. Depart residence via motorcade en route Cypress Point Golf Course for golf with Jack Westland, Len Firestone and Leon Parma.
- 2:10 p.m. Arrive residence.
- 2:50 p.m. Depart residence en route Monterey Peninsula Airport. Board Air Force One and depart en route Moffett Field Naval Air Station, Palo Alto. Travel Time: 45 minutes.

SUNDAY - SEPTEMBER 21, 1975 - Continued

3:35 p.m. Arrive Moffett Field Naval Air Station. Board motorcade en route Stanford University Campus. Driving Time: 10 mins.

3:50 p.m. Arrive Stanford University Law Library to participate in Dedication Ceremonies. Remarks. Duration: 50 mins.

4:40 p.m. Arrive Student Lounge for conversation with 24 student leaders. Duration: 20 minutes.

5:00 p.m. Proceed to Law Library Courtyard for brief reception for 250 honored guests. Duration: 30 minutes.

5:35 p.m. Depart Stanford University en route Moffett Field NAS. Board Air Force One and depart en route Long Beach Municipal Airport. Travel Time: 1 hour, 25 minutes.

7:00 p.m. Arrive Long Beach Municipal Airport. Board motorcade and depart en route Disneyland Convention Center. Driving Time: 25 minutes.

7:40 p.m. Attend NALU Convention Dinner. Remarks. Duration: 1 hour, 50 mins.

9:30 p.m. Depart Disneyland Convention Center en route Long Beach Airport, board Air Force One and depart en route Monterey Peninsula Airport. Travel Time: 1 hour, 30 minutes.

11:20 p.m. Arrive Firestone Residence.  
OVERNIGHT.

MONDAY - SEPTEMBER 22, 1975

9:25 a.m. Depart Firestone Residence en route Monterey Peninsula Airport. Board Air Force One and depart en route San Francisco. Travel Time: 55 minutes.

10:20 a.m. Arrive San Francisco. Board motorcade for Hyatt Hotel and AFL-CIO Building Trades Department Convention. Remarks. Duration: 45 minutes.

11:45 a.m. Arrive St. Francis Hotel. Proceed to Suite.

12:05 p.m. Depart Suite en route World Affairs Council Head Table Reception and Luncheon in your hotel. Duration: 45 minutes. Remarks and Q and A.

2:55 p.m. Depart Suite en route TV Interview in your hotel. Duration: 30 mins

3:35 p.m. Depart St. Francis Hotel en route Airport. Board Air Force One and depart en route Andrews AFB. Travel Time: 5 hours, 20 minutes. Time Change: + 3 hours.

12:05 a.m. Arrive South Lawn.

# # # #

**November 21, 1975**

**Dear Mr. Gray:**

**Please forgive the delay in  
answering your letter of September 24.**

**Mrs. Ford remembered well  
meeting both you and your wife at the  
Oklahoma State Fair September 19. She  
also remembered talking to you about your  
column and was just delighted when she  
read it. She wanted me to be sure to  
send her deep thanks and very warm regards.**

**Sincerely,**

**Sheila Rabb Weidenfeld  
Press Secretary to Mrs. Ford**

**Mr. Lee Gray  
Managing Editor  
Perkins Publishing Company  
P. O. Box L-133 S. Main Street  
Perkins, Oklahoma 74059**

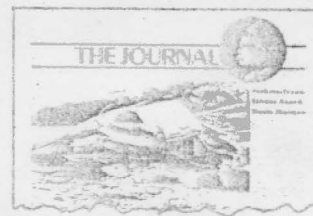




# PPC

PERKINS PUBLISHING COMPANY

PUBLISHER • HARLAND B. WELLS



PHONE  
547-241  
OR  
377-359

24 September 1975

Betty Ford  
The First Lady  
c/o The White House  
Washington, D.C.

IN RE: Your Recent Visit to the Oklahoma State Fair  
and the Enclosed "Gray Matter and Monkey Business" Column

Dear Mrs. Ford:

My wife and I certainly enjoyed meeting you and the President at the Oklahoma State Fair last Friday (Sept. 19).

As I told you at the time, I'm enclosing my weekly column in The Journal where I presented my views concerning your comments on Sixty Minutes a few weeks ago.

I hope you enjoy the column.

My wife wanted to tell you how much she liked the dress you were wearing at the fair, but as she says, "Lee just held onto her hand and talked and talked about how he supported her comments on Sixty Minutes. She just looked at him like he was weird!" I had to concur with my wife's assessment of our meeting. But I figured I'd better take advantage of our one chance to meet with you all.

At any rate, we wish the best....

Sincerely,

Lee Gray  
Managing Editor



Serving the Rural Area Since 1890

# THE JOURNAL

MARTHA WELLS, HARLAND WELLS  
Co-Publishers and Editors

Lee Gray, Managing Editor  
Jane Flint, Composition Supervisor

Shirley Hagar, Composition/Typesetter  
Rhonda Nickels, Secretary/Receptionist

## THE JOURNAL

Published every Thursday by the Perkins Publishing Company, 133 S. Main - Post Office Box L, Perkins, Oklahoma 74059. Telephone 377-3599 or 547-2411.

Subscriptions: \$6.18 in Payne, Lincoln & Noble Counties, \$9.28 Elsewhere.

Entered and paid as 2nd Class mail in the Post Office in Perkins, Oklahoma, 74059. Call in your subscription, news or classified ads today - 547-2411 or 377-3599.

### Monkey Business

We heard this week that Harold Flint over by Agra is always passing information from this column on to his wife, so for Harold's benefit and because we appreciate a loyal reader, we've included the following information from a Federal Aviation Administration study.

The FAA recently spent \$57,000 to study the measurements of airline stewardesses.

Results of the study included the testing of 423 women who weighed between 94 and 145 lbs., stood between 5 ft. 1 in. and 6 ft. 1 in., had bust measurements between 29 and 37.5 inches and waists from 21 to 28 inches.

There have been a number of articles and comments on the waste of taxpayers' money where this study was concerned.

But, we would defend the study because we've been a student of airline stewardess-

es measurements for many years now.

Our only complaint is that we would have paid the FAA to let us take the tape measure and conduct independent research on our own. (Imagine our father-in-law, who is a FAA pilot in Belgium, would volunteer to help us if a follow up study is required.)

### -Family Affair-

X We've been following all this point, counterpoint business over First Lady Betty Ford's remarks on "60 Minutes" when she was asked hypothetically what her reaction would be if daughter Susan told her she were having an affair.

Lady Ford, who is probably the most intelligent person in Washington today, gave a straight, compassionate answer. She said she wouldn't be surprised because of the "new morality" influence on kids Susan's age.

On the other hand...

Poor Mrs. Ford has caught

hell from a number of self-righteous, Bible toting, finger pointing, shocked men and women who would prefer that the world go around without discussion on today's life style.

It reminds us of a recent episode of Archie Bunker when his married daughter told him she was "pregnant."

"Don't use that word," grimaced Archie. "Nice girls don't get pregnant--they have babies."

The semantic games people play--whew!

In Mrs. Ford's case, we think the journalist (and we use the word loosely) should have been a little more tasteful in his questioning. Really now--that's not news--but national scandal sheet gossip.

We are proud of the fact that Mrs. Ford did have the guts to give an answer--but we wouldn't have blamed her for saying, "That young man, is none of your

business."

Oklahoma's Lady of the GOP, Ms. Paula, wrote Betty Ford and criticized her answer.

Aw c'mon now...what happened to "judge" not, least ye be judged"...and let he without sin cast the first stone."

Even Jesus Christ befriended a prostitute--so who are we to sit in judgment of others?

### -Not Long Ago-

All of this national attention to such an insignificant issue reminds us of the time Kansas legislators were asked to consider the legalization of prostitution.

The Topeka newspaper splashed banned headlines and a front page photo of a masked woman, dressed in red, testifying before the House of Representatives. (The woman wasn't even a prostitute...just a Capitol secretary dressed for the part.)

While wasting taxpayers'

## GRAY MATTER and MONKEY BUSINESS

by Lee Gray



dollars, having a little fun on the shoreline as the ship of a legalized prostitution bill state sails off into the horizon.

chance in hell of passing, Frosty never ceases to inform and entertain us. When he dies, and we hope that's 100 years from now, his body should be donated to a medical research center. We'd like to see an autopsy report that explains how 900 yards' guts were crammed in Frosty's five-foot-seven frame.

"Oren," said one legislator to our father who was then a state representative, "What are you going to do about the prostitution bill?" The old man smiled and replied, "Why...I'm not going to pay it."

(Questions about prostitution bills...or Susan Ford's morality...deserve those kind of answers!)

--You're Missing the Boat-- If you haven't sent your \$10 in for a subscription to want to read about the Frosty Troy's Oklahoma league Monkey Business Observer, you've been left on this state!

# READ

## The Journal



# Mrs. Ford, in Letter, Expands on Interview

WASHINGTON, Sept. 11 (AP) — Following is the text of a letter that Betty Ford sent to Lorena Chevalier of Dallas, who had written to Mrs. Ford after the First Lady said in a television interview that she "wouldn't be surprised" if her 18-year-old daughter told her she was having an affair. The White House said the letter was similar to others sent to persons who had written about her comments.

Thank you for writing about my appearance on the "60 Minutes" interview. The concerns which inspired you to share your views are appreciated.

I wish it were possible for us to sit down together and talk one to another. I consider myself a responsible parent. I know I am a loving one. We have raised our four children in a home that believes in and practices the enduring values of morality and personal integrity.

As every mother and father knows, these are not easy times to be a parent. Our convictions are continually being questioned and tested by the fads and fantasies of the moment. I believe our values to be eternal and I hope I have instilled them in our children.

We have come to this sharing of out-

looks through communication, not coercion. I want my children to know that their concerns — their doubts and their difficulties — whatever they may be, can be discussed with the two people in this world who care the most — their mother and father.

On "60 Minutes," the emotion of my words spoke to the need of this communication — rather than the specific issues we discussed.

My husband and I have lived 26 years of faithfulness in marriage. I do not believe in premarital relationships, but I realize that many in today's generation do not share my views. However, this must never cause us to withdraw the love, the counseling and the understanding that they may need now more than ever before.

This is the essence of responsible parenthood. It is difficult to adequately express one's personal convictions in a 15-minute interview. I hope our lives will say more than words about our dedication to honor, to integrity, to humanity and to God.

You and I, they and I, have no quarrels.

Sincerely  
BETTY FORD

New York Times - 9/14/75 p. 38C

## Negative Mail <sup>p. 85</sup>

The Great Debate continues over Betty Ford's comment that she "wouldn't be surprised" if her 18-year-old daughter, Susan, were to have an affair. The First Lady's mail has been running roughly 2-to-1 against her view, with about 19,500 critical letters in so far.

Washington Post - 9/12/75

## Christian Science Monitor Mrs. Ford deluged <sup>9/12/75</sup> by 28,000 letters . . . p. 2.

Washington

First Lady Betty Ford's comments on premarital sex generated nearly 28,000 letters and telegrams, more than two-thirds of which were critical of her remarks.

Sheila Weidenfeld, Mrs. Ford's press secretary, said Wednesday that the first lady is answering this mail which, to date, includes "8,000 pros and 19,500 cons."

Mrs. Ford's letter to her critics explains that she does not believe in premarital sex, but that she realizes that many in today's generation do not share her views.

Answering an interviewer's question last month in which her 18-year-old daughter, Susan, was used as a hypothetical example, Mrs. Ford said she would not be surprised if Susan were to tell her at some point that she was having an affair.

She added, ". . . I would certainly counsel and advise her on the subject . . ." This was

the main point of Mrs. Ford's remarks, which were widely misinterpreted.



MRS. FORD'S ITINERARY - SUNDAY, SEPTEMBER 21

11:55am Mrs. Ford departs Ryomi enroute Cyprus Point Golf Clubhouse. On the way, Mrs. Ford will dropby the Bearden residence to view the flower gardens and greet several neighbors and freinds.

12:20pm Mrs. Ford arrives Clubhouse and will proceed to the veranda to greet guests and join the President.

Luncheon guests include:

Amb and Mrs. Firestone  
Carol and Dee Keaton  
Jack and Helen Westland  
Mr. and Mrs. Ed Lowery  
Merv Griffin  
Barbara McFarland  
Clint and Maggie Eastwood  
Mr. and Mrs. Ansel Adams  
Admiral Gayler  
Leon and Barbara Parma

1:00pm The President and Mrs. Ford and the luncheon guests proceed to the private dining room for luncheon.

2:00pm The President and Mrs. Ford proceed to the motorcade for boarding.

2:15pm The President and Mrs. Ford arrive Ryomi where they will be met by:

Avis Freeburg  
Kathy Strong

Liberty's Trainer  
5 year old child

Dual Champion Ronakers Nevato Cain  
(Liberty's Grandfather)  
Champion Honors Chances Are  
(Liberty's Grandmother)  
Champion Honors Foxfire Scandal  
(Liberty's sister)

2:25pm Mrs. Ford proceeds into residence for personal time ( 1hour30 min)

3:55pm Mrs. Ford departs Ryomi enroute Gallery Carmel to meet with Malcom Moran. Also present will be:

Deanna and Harry Haimoff  
Yussef Olive  
Callie Moran  
Jodi Fisher

Gallery Owners  
Gallery Manager  
Malcom's daughter  
Malcom's freind

- 4:30pm Mrs. Ford departs Gallery Carmel enroute Ryomi for personal time(2 hours).
- 6:45pm Mrs. Ford departs Ryomi enroute Westland residence for informal cocktails with several invited guests.
- 7:15pm Mrs. Ford and the Westlands proceed to the Keaton residence for a buffet dinner. Guests include:

Amb and Mrs. Firestone  
Merv Griffin and Barbara McFarland  
Tom Mathews  
Bud and Rosalie Shoemake  
Clint and Maggie Eastwood  
Jake and Rose Butts  
Dr. Vernon and Peggy Hyde  
Tom and Eleanor MacMichael  
Mrs. Donald McNeely  
Tom and Margaret Oliver  
Howard Leach  
Leon and Barbara Parma  
Admiral and Mrs. Noel Gayler  
Bob and Mary Newell  
Mr. and Mrs. Raleigh Warner  
Mrs. Ethel Cortright ( Carol Keaton's mother)

NOTE: Merv Griffin and members of his band will provide musical entertainment during dinner.

- 9:45pm Mrs. Ford returns to Ryomi

OVERNIGHT

SHEILA WEIDENFELD

## THE WHITE HOUSE

WASHINGTON

### DINNING OUT IN CARMEL

French: L'ESCARGOT (excellent food, great atmosphere--small)

Italian: RAFFAELLO'S (excellent food, good atmosphere--small)

Japanese: SHABU SHABU (excellent food -- country style Japanese -- great atmosphere--small)

### DINNING OUT IN MONTEREY

Italian: SARDINE FACTORY (On Cannery Row of Steinbeck fame--excellent --large)

Japanese: THE GINZA (elegant Japanese--excellent food great atmosphere--small rooms)

### CARMEL LOCAL HANG-OUTS

THE HOGS BREATH --of Clint Eastwood fame--outside nice atmosphere

THE MISSION RANCH-- Carmel local's place--dancing in the BARN -- loud and rowdy on the weekends!--singing at the piano

### IN BIG SUR

VENTANA --beautiful drive down the coast -- great view -- good food -- lovely atmosphere

HAVE A GREAT WEEKEND IN MY OLD STOMPING GROUNDS!!!

## WELCOME TO MONTEREY

### BAGGAGE REMINDER:

Place all luggage for Air Force One unlocked outside of your room by 6:30 am Monday.

You can reach the White House Switchboard by dialing 624-1400. In the Holiday Inn the White House Switchboard can be reached from a House Phone by dialing 101 and 136. The staff office is located in the Holiday Inn, Carmel, Rooms 300-302.

### MOTORPOOL

A Motorpool dispatcher will be located in Room 151 of the Holiday Inn, Carmel. The dispatcher can also be reached through a White House Signal Phone. On Saturday evening between 6:00 and 8:00 pm Motorpool cars will shuttle between Casa Ladera and Holiday Inn. The Motorpool operation on Saturday and Sunday will not be in service after 11:30 pm, however, one Motorpool car will be kept active until 2:00 am in the event it is needed. The Motorpool will resume operation at 7:00 am. Sunday morning between 10:30 am and 1:00 pm Motorpool cars will shuttle between Casa Ladera and Holiday Inn.

### STAFF MEALS

A buffet dinner will be served between 6:00 and 8:00 pm on Saturday evening at Casa Ladera. On Sunday a buffet Brunch will be available at Casa Ladera from 10:30 am to 1:00 pm. On Monday morning a continental breakfast will be available at Casa Ladera from 7:00 to 8:30 am.

### HOLIDAY INN INFORMATION

If you are staying at the Holiday Inn, the following services are available:

There is a barber shop in Carmel Rancho Shopping Center (three blocks), Rancho Barber Shop, 624-8998. Open 10:00 am to 5:00 pm Saturday.

For the ladies there is a beauty shop across the street (Haruko's) 624-1557, Open 9:00 am to 5:00 pm Saturday.

Long's Drug Store across the street is open Saturday 9:00 - 9:00 and Sunday, 10:00 - 7:00. Phone: 624-0195 for prescriptions: 624-0148.

Carmel Cleaners, 3rd & Junipero, Carmel is open 8:00 am to 5:00 pm Saturday with One Hour Service. 624-6447.

### SPECIAL EVENTS

Anyone wanting to play tennis should contact Scott Searle at 625-1656. A court is reserved in his name at Mission Tennis Ranch, Dolores & Rio Road, Carmel, Saturday 3:00 - 5:00 pm and Sunday 9:00 - 11:00 am for anyone who wants to play.

The Carmel Valley Begonia Gardens located on Carmel Valley Road are open 9:00 am to 5:00 pm daily for anyone interested in beautiful flowers.

The Path of History through Monterey offers many excellent sights that would be of interest i.e. Robert Louis Stevenson's home, the First Theatre in California and many historic adobes. To follow the Path of History start in downtown Monterey and follow the broken red lines painted on the street.

For those who enjoy the ocean and the beach one of the most picturesque in the area is Carmel Beach, located at the end of Ocean Avenue, in Carmel.



DINING OUT (Reservations are advised at all restaurants)

THE GENERAL STORE & WESTERN UNION RESTAURANT

5th & Junipero, Carmel

Indoor/outdoor dining

Lunch 11:30 - 2:30, Dinner 5:30 - 10:00, Sunday Brunch 10:00-2:30.

Complete dinner or appetizers. \$4.75 - \$7.75

THE PUMP HOUSE

Junipero & 6th Carmel (Across from the park).

Old English Curries, Beef, Lamb, Lobster.

Dinner 6:00 - 10:30 Tavern Suppers served in the Tavern 6:00 to Midnight.

Dinner \$6.00 - \$9.00 Tavern Suppers \$2.00 - \$5.00

Full Bar

SARDINE FACTORY

701 Wave Street, Monterey

Continental gourmet, seafood

Dinner 5:00 - Midnight

\$5.00 - \$10.00

THE COVEY

Quail Lodge, -Carmel Valley Road

Dinner from 6:30 (closed Sundays)

Local Seafood, epicurean meat entrees

from \$5.25

CLOCK GARDEN RESTAURANT

665 Abrego Street, Monterey

Continental

Lunch 11:30 - 2:00, Dinner 5:30 - 10:00, Sunday Brunch 10:30 - 2:00

Dinner \$5.25 - 8.50

THE HATCH COVER

Carmel Rancho Shopping Center

Dinner 6:00 - 11:30

Complete Dinner \$3.95 - \$9.95

✓ L'ESCARGOT

Mission/4th, Carmel

French country cuisine

Dinner 6:00 - 9:00 (closed Sunday)

Dinner \$4.95 - \$7.00

THE WAREHOUSE

Cannery Row/Prescott Ave., Monterey

Pizza, spaghetti, ravioli, etc.

Dinner 4:30 - midnight

Dinner \$1.00 - \$4.75

Live Entertainment - silent movies.

ABALONETTI

47 Fisherman's Wharf, Monterey (Inside Liberty Fish Market)

Seafood, squid is their specialty. (Excellent)

Dinner 11:00 - 9:00

\$3.75 - 5.85

THE RED LION

San Carlos/7th, Carmel

English Tavern - hot sandwiches specialty

Lunch 11:30 - 3:00 Dinner 7:00 - 11:00

Dinner \$1.00 - 5.00

CLUB XIX

Del Monte Lodge, Pebble Beach  
Gourmet Food  
A la carte dinners from \$10.00  
Dinner served 7:00 - 10:30  
Lunch 11:00 - 4:45

SANCHO PANZA

590 Calle Principal, Monterey  
Mexican Food  
Lunch 11:00 - 2:00, Dinner 5:00 - 9:00, Sunday 12:00 - 8:00  
\$2.50 - \$3.85

MONTEREY NIGHT LIFE

The following places have live entertainment:

CASA MUNRAS GARDEN HOTEL

Fremont/Munras, Monterey  
Joe Ingram trio  
Dancing  
9:30 - 2 Friday - Saturday

HOLIDAY INN, Carmel

Highway 1 and Rio Road  
Silas Trio  
Dancing  
9:00 - 1:30 Friday-Saturday 9:30 - 2:00 Sunday

HOLIDAY INN, Monterey

Hwy. 1/Del Rey Oaks exit  
Male & female vocalist (No dancing)

SHUTTERS

888 Munras, Monterey  
Jack Sheldon, with Art Pepper & Blue Mitchell  
Shows at 9:00, 10:30, 12:00 Friday - Sunday  
\$3.00 cover charge

HATCH COVER

Carmel Rancho Shopping Center (Mouth of Carmel Valley)  
Dunn Brothers (Bluegrass, country music)  
9:00 - 1:00 Friday, Saturday

DEL MONTE HYATT HOUSE

1 Old Golf Course Road, Monterey (Mark Thomas Drive)  
Cloudburst (Dancing)  
9:00 - 2:00 Friday, Saturday, Sunday

WAREHOUSE

Cannery Row/Prescott, Monterey  
Banjo band, singers (Show rather than dancing)  
8:00 - midnight Friday, Saturday

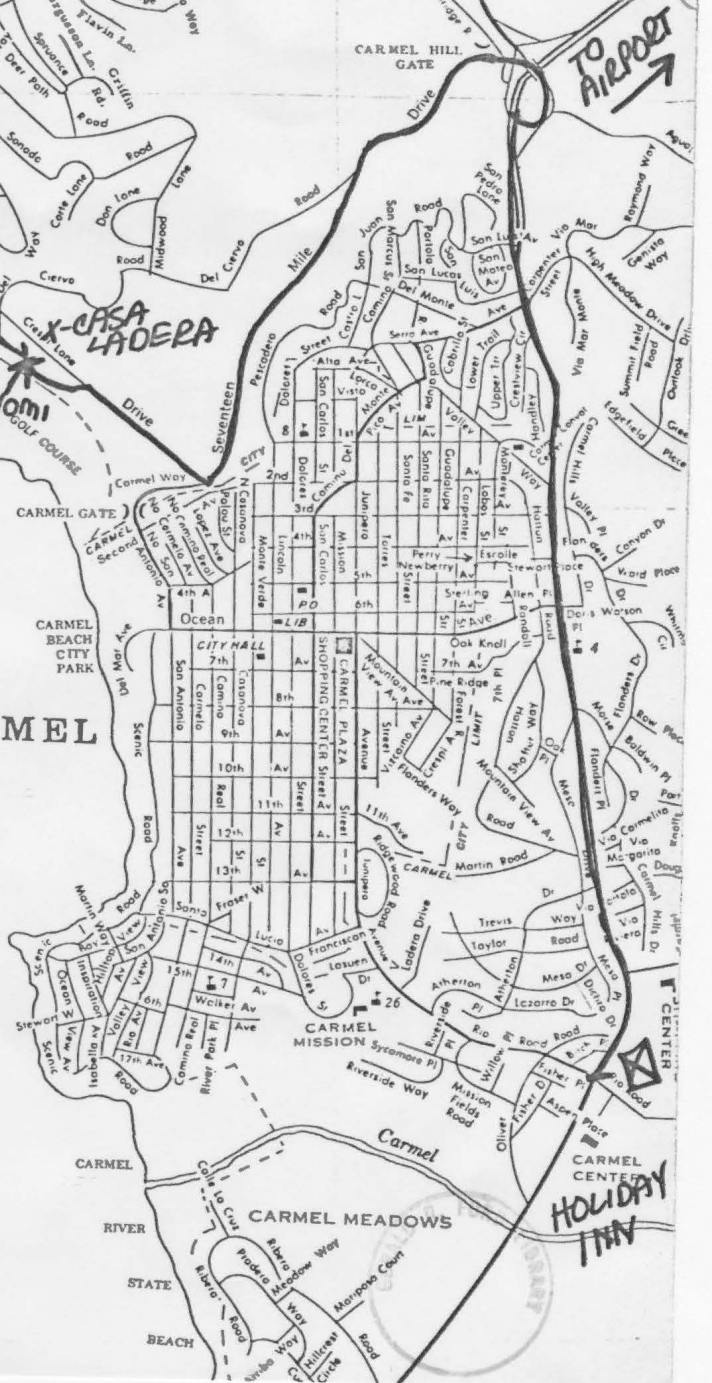
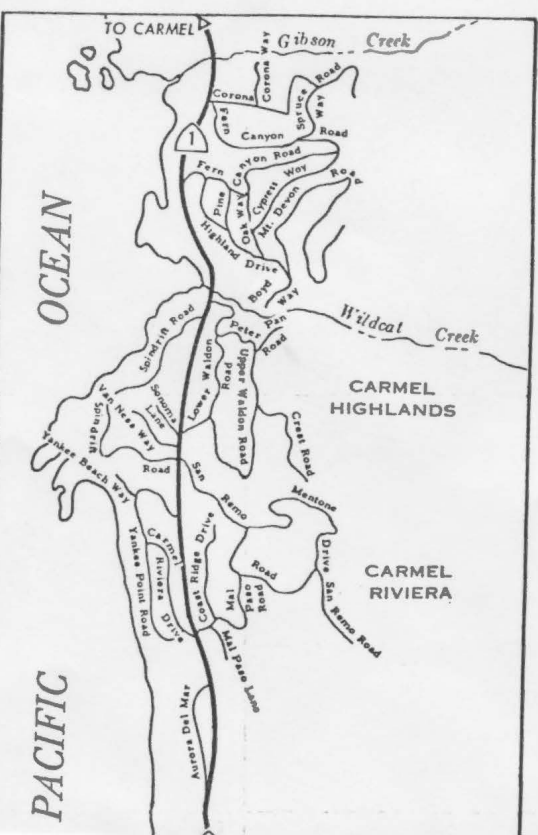
MONTEREY, CALIFORNIA

ROOM LIST

BAUTISTA, A. (Valet)	RYOMI Residence
BRENTON, George	HOLIDAY INN #332
CAVANEY, Red	HOLIDAY INN #303
FISHER, Mary	HOLIDAY INN #414
GERRARD, Connie	HOLIDAY INN #312
GREENSPAN, Alan	CASA LADERA, Downstairs
GUILLERMO, R. (Steward)	RYOMI Residence
HARTMANN, Bob	CASA LADERA Upstairs
HERRIN, Billy	HOLIDAY INN #318
JACKSON, Ron	RYOMI Residence
KENNERLY, David	CASA LADERA Downstairs
KOLLMORGEN, Capt.	HOLIDAY INN #407
LUKASH, Dr.	RYOMI Guest House
MEAD, Charlie	RYOMI Guest House
MERCHANT, Jack	HOLIDAY INN #141
MESSERSMITH, Neta	HOLIDAY INN #306
NESSEN, Ron	CASA LADERA Upstairs
O'BRIEN, Jo Anne	HOLIDAY INN #311
O'DONNELL, Terry	HOLIDAY INN #301
OLDENBERG, Herb	HOLIDAY INN #315
ORBEN, Bob	HOLIDAY INN #310
PONTIUS, Ron	HOLIDAY INN #139
POREMBKA, Carolyn	CASA LADERA Downstairs
RILEY, Col.	HOLIDAY INN #409
ROSENBERGER, Eric	HOLIDAY INN #309
RUMSFELD, Don	RYOMI Guest House
SMITH, Fred	HOLIDAY INN #403
SORUM, Pete	HOLIDAY INN #308
STAHL, Norm	HOLIDAY INN #315
THOMSEN, Ron	HOLIDAY INN #332
WEIDENFELD, Sheila	CASA LADERA Downstairs
WENDELL, Dave	HOLIDAY INN #405
WILLIAMS, Brenda	HOLIDAY INN #304
YATES, Nell	HOLIDAY INN #305
ZIMNEY, Steve	HOLIDAY INN #415

STAFF OFFICE	300-302
WHCA OFFICE	428
COMM CENTER	426
MOTOR POOL	151

P A C I F I C



PEPPERDINE UNIVERSITY DEDICATES THE

# **Leonard K. Firestone Fieldhouse**

SEPTEMBER 20, 1975





## The Leonard K. Firestone Fieldhouse

The \$2.5 million Firestone Fieldhouse is a magnificent complement to Pepperdine's Malibu campus.

With its seating capacity of 4,000 it is the center of the university's growing athletic program. It is also a versatile gymnasium for many physical education and recreational activities.

The 115x120 ft. floor, designed to feature Pepperdine's orange and blue, consists of a unique polyurethane substance with a glossy finish called "Versaturf." Beneath the bleachers are classrooms, a weight training room and handball court. Dressing facilities, a training room and an equipment room are at the west end of the structure. The upper portion of the Fieldhouse features comfortable office space for physical education instructors and coaches.

The Fieldhouse is the hub of the university's intercollegiate athletic program which is rapidly emerging as one of the finest in the nation. Last season the Waves basketball squad finished the season with a 19-8 record and has just completed the best recruiting program ever. The volleyball squad which won the 1975 United States Volleyball Association Championships last season, was ranked number 3 nationally.

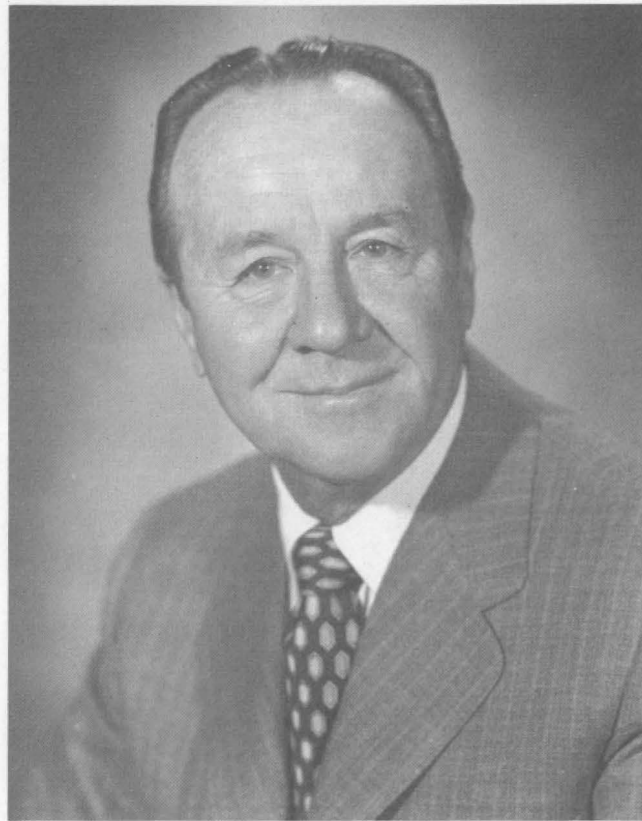
Firestone Fieldhouse was also the site of an early season tennis match featuring Pepperdine, U.S.C., and U.C.L.A., the eventual national champions. Pepperdine's squad racked up an unprece-

dent 14 points and was ranked in ninth place nationally.

The baseball team won the West Coast Athletic Conference for the second consecutive year with a 37-13 over-all mark. They eliminated U.S.C. in the play-offs and, for the second straight year, missed by one game competing in the College World Series in Omaha, Nebraska.

Situated just north of the Fieldhouse is the newly completed Raleigh Runnels Memorial Swimming Pool, the home of the Waves fledgling water polo and swimming teams which will be piloted by former All-American Rick Rowland.

In addition to serving as the hub of the university's athletic program, Firestone Fieldhouse sees action as the site of Seaver College intramural competition and as a meeting place for concerts and other assemblies including Monday morning chapel which is attended by all students.



"My greatest satisfaction in life is doing something for somebody else," Leonard K. Firestone once commented to Pepperdine's president, William S. Banowsky.

Mr. Firestone has, indeed, done a great deal for other people during his distinguished career as an industrialist and public servant, which began in 1931. Appointed president of the Firestone Tire and Rubber Company of California in 1943, he retired from that position in 1970.

His latest accomplishment is to serve his country as Ambassador to Belgium.

The dedication of the Firestone Fieldhouse is further evidence of his service to others. In addition to his gifts to Pepperdine University and the University of Southern California, many youth, religious

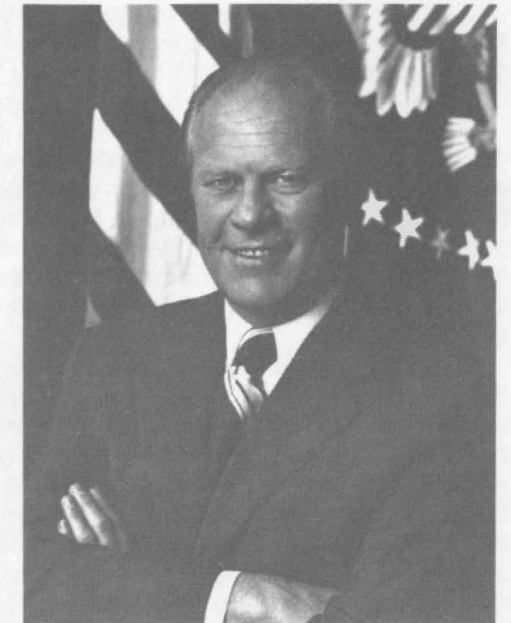
and civic organizations have benefited from his giving. His service has brought outstanding awards from the Salvation Army, the Los Angeles Junior Chamber of Commerce and the National Conference of Christians and Jews, which named him "Man of the Year."

His leadership in the community includes: past chairman and current member of the Board of Trustees of U.S.C.; member of the National Executive Board of the Boy Scouts of America; member of the California Community Foundation; and honorary chairman of the Board of Directors of the Deafness Research Foundation. He has also served as president of the World Affairs Council and as a member of the Beverly Hills City Council.

*Christianity Today* recently noted Ambassador Firestone's selfless spirit by pointing out that a July 1975 meeting he hosted in Brussels between European editors and Billy Graham resulted in Graham's best coverage ever on the Continent. Mr. Firestone also helped to promote the gathering of 14,000 evangelical Christians to which Graham and others spoke.

Ambassador Firestone, a member of Pepperdine's University Board since 1955, has supported athletics for many years. Formerly part owner of the Cleveland Rams and California Angels, he served as chairman of the 1958 Los Angeles Open Golf Tournament and as president of the Palm Springs Golf Classic in 1961 and 1962. He was captain of the Princeton University polo team in his junior and senior years and was rated a 5-goal player.

About his many accomplishments and contributions, he has remarked with modesty, "It's a kind of selfish approach, actually, because you get more out of it than you put into it. What you do for somebody pays off much greater than any effort put into it. And that doesn't necessarily mean making money."



## PROGRAM

Dedication  
of the  
Firestone Fieldhouse  
Saturday, September 20, 1975

Presiding ..... William S. Banowsky  
*President of Pepperdine University*  
Academic Procession ..... United States Marine Corps Band  
The Star Spangled Banner ..... Pat Boone  
*Pepperdine University Board*  
Pledge of Allegiance ..... John Wayne  
*Pepperdine University Board*

### The Ceremony of Dedication

Choral Selections ..... Seaver College A Cappella Chorus  
Lawrence E. McCommas, *Director*  
Acceptance ..... Richard C. Seaver  
*Pepperdine University Board*  
Response ..... Leonard K. Firestone  
*United States Ambassador to Belgium*  
Address ..... Gerald R. Ford  
*President of the United States*  
Dedicatory Prayer ..... Reuel Lemmons  
*Pepperdine University Trustee*

## Pepperdine University's new **SEAVER COLLEGE**

Just a few months ago, on April 20, 1975, with Governor Ronald Reagan as speaker, the first school to be named under the Pepperdine University umbrella was dedicated as the Frank R. Seaver College.

The undergraduate liberal arts core around which the University's graduate and professional schools are clustered, Seaver College sits at the heart of the magnificent 650 acre Malibu campus. Its Mediterranean design, created by noted architect William L. Pereira, forms a dramatic setting in the rugged mountains overlooking the Pacific.

Even as the University expands into the thousands, Frank R. Seaver College will remain relatively small. Its curriculum is the sciences, arts, and letters. Its faculty are men and women of the highest academic training who feature a close personal relationship between teacher and student. Most students enroll full time and, rather than commuting in and out for classes, most reside on the beautiful campus.

One of those who very early saw the vision of the new college was Mrs. Frank Roger Seaver, without whose gifts the "Miracle of Malibu" would not have been possible. She has been joined by the Adamson-Rindge family, Mrs. George Martin Brock, the late Palmer Conner, Roy Crocker, Mr. and Mrs. Edward G. Currivan, George W. Elkins, Bryant Essick, Leonard K. Firestone, Mrs. Theodore A. Fouch, Jerene Appleby Harnish, Carl Huntsinger, Fritz Huntsinger, Sr., the Walter Knott family, Frederick Llewellyn, Clint Murchison, Jr., Mr. and Mrs. Charles Payson, Mrs. Godwin J. Pelissero, Morris B. Pendleton, Mrs. B. D. Phillips, Richard Ralphs, Henry Salvatori, Richard M. Scaife, Richard C. Seaver, Mrs. Beverly Stauffer, Leonard Straus, Mr. and Mrs. John C. Tyler.

Seaver College is two-thirds completed. With construction of a fine arts center, an auditorium, an administration building, and additional housing for both married and single students as well as for faculty, an ideally designed small, liberal arts, coeducational, undergraduate, residential campus will be accomplished.

In coming years, Pepperdine will formally name its other academic components which comprise the University — the School of Law, the School of Business and Management, the Graduate School, the School of Education, perhaps Schools of Public Administration and Behavioral Science. These several parts comprise a university, a unified whole under the Pepperdine banner, because each reflects in its own best way

the Pepperdine philosophy of Christian Education.

The University's original campus in Los Angeles is now a thriving College of Urban Affairs enrolling several thousand students. Pepperdine's campus in Heidelberg, Germany, offers students an opportunity to study for a year in a European atmosphere.

Acquired by Pepperdine in 1969, the School of Law in Anaheim is accredited by both the California State Bar and the American Bar Association. It will be the next school to be headquartered in Malibu, opening here in the fall of 1977.

But as Pepperdine University develops at Malibu, the crown jewel in this blending of mountain and ocean and sky, and the academic heart of the entire University, will be Seaver College.

George Pepperdine, who launched the dream, and Frank R. Seaver, whose legacy has given it dramatic acceleration, were contemporaries. They also were men of strikingly similar values and natures.

They knew one another personally during the time Mr. Pepperdine was expanding his Western Auto Stores all over the West and Mr. Seaver was developing his great Hydril Company.

Both were rugged individualists, long-range thinkers, inventive, astute businessmen—hard workers cut from the same stout cloth. Both were deeply patriotic Americans with a great love and concern for their country. Both were profoundly religious and generous throughout their lives to their churches and to the needy.

Mr. Pepperdine, at the peak of his career, took stock of what he felt was his Christian obligation as a steward of his wealth. He came to the conclusion that the best investment he could make would be in young people. Thus, in 1937, he gave millions to found the George Pepperdine College on a beautiful 33-acre campus in Southwest Los Angeles at Seventy-ninth and Vermont.

Mr. Seaver also expounded the philosophy that helping youth would help the country and backed up that conviction by giving millions to education. And Blanche Seaver has compounded his philanthropy manifold since his death.

Today, Pepperdine University is propelled by the ideals of these two great men who have had such a profound effect on the school—the original founder, and the man whose life is now honored in the University's central liberal arts college in Malibu.



Mrs. Frank R. Seaver

## Host Committee

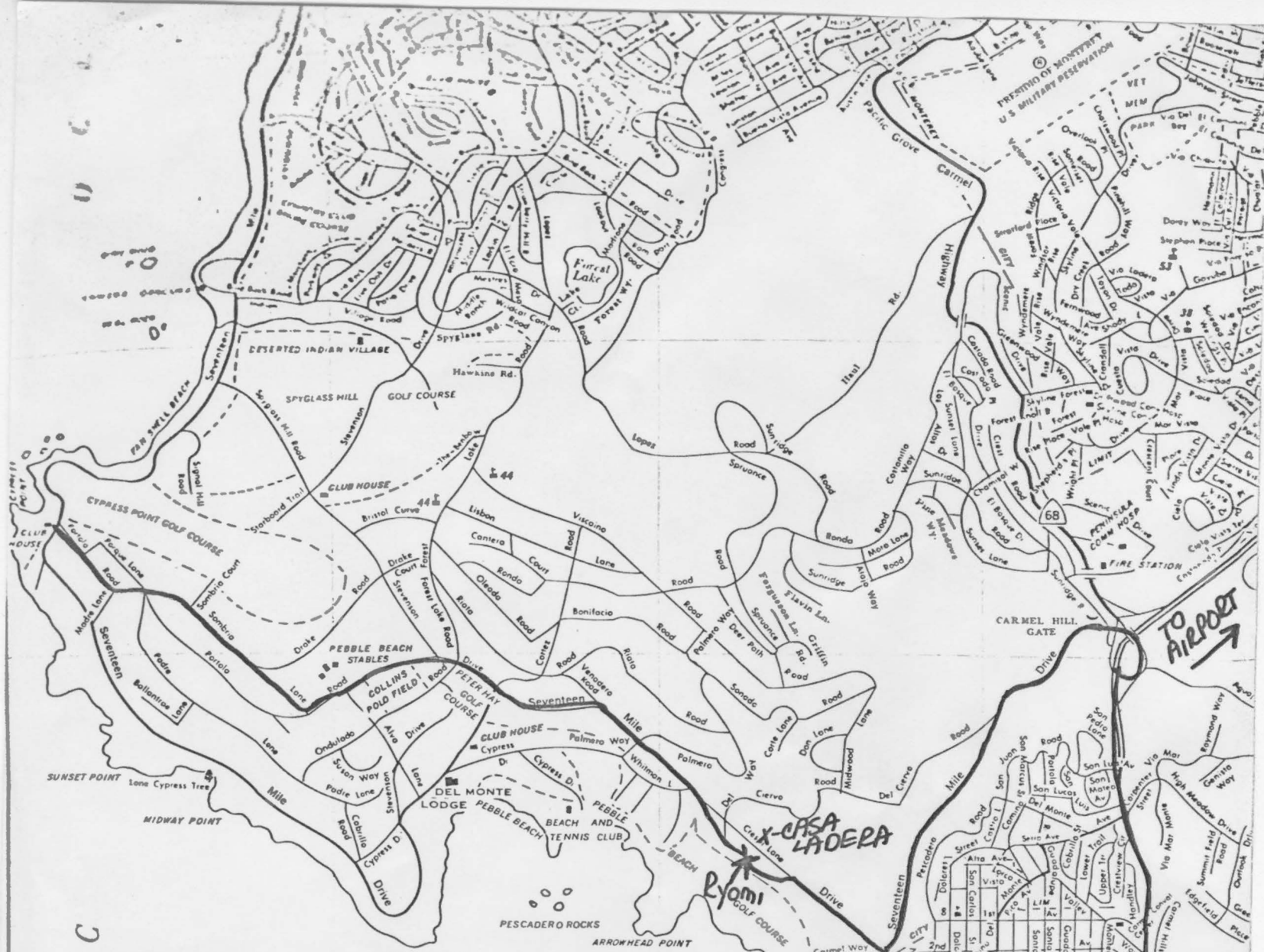
Mrs. Howard Ahmanson  
Luther C. Anderson  
R. W. Anderson  
Walter Annenberg  
Carlton R. Appleby  
Gene Autry  
R. Stanton Avery  
Norman Barker, Jr.  
Stephen D. Bechtel, Sr.  
Arnold Beckman  
Edgar Bergen  
Stephen C. Bilheimer  
Thornton F. Bradshaw  
Earl Brian  
Mrs. George C. Brock  
Richard Call  
Edward W. Carter  
Mrs. Norman Chandler  
Cyril Chappellet  
E. H. Clark  
Mrs. Thurmond Clarke  
John Brown Cook  
Roy P. Crocker  
Ted Cummings  
Edward G. Currivan  
Donald W. Darnell  
Justin Dart  
Stuart Davis  
Robert Dockson  
J. Howard Edgerton  
Ralph Edwards  
George W. Elkins  
Bryant Essick  
J. Robert Fluor  
Mrs. Theodore Fouch  
F. Daniel Frost  
Stanton Hale  
Fred L. Hartley  
Herbert S. Hazeltine  
Mrs. Herbert Hoover, Jr.  
Bob Hope  
Jack Horton  
Howard P. House  
Jaquelin H. Hume  
Fritz Huntzinger, Sr.  
Emmett H. Jones  
Earle Jorgensen  
Edgar Kaiser  
G. Richard Katzenbach  
Howard B. Keck  
Willard W. Keith  
Mrs. Theodore Jackson Knapp  
Frederick G. Larkin, Jr.  
Thomas Leavey  
Raymond Lee

Mervyn Le Roy  
Frederick Llewellyn  
Hulsey S. Lokey  
Maurice Machris  
Malcolm MacNaughton  
David X. Marks  
C. Daniel Martin, Jr.  
John McCone  
Carl P. Miller  
Paul Miller  
Frank A. Morgan, Sr.  
Clint W. Murchison, Jr.  
Franklin D. Murphy  
John Newman  
David Packard  
William R. Pagen  
Leon Parma  
Edwin W. Pauley, Sr.  
Charles S. Payson  
Clair L. Peck, Jr.  
Mrs. Godwin J. Pelissero  
Morris B. Pendleton  
Neil Petree  
Tom Pike  
Richard Ralphs  
Simon Ramo  
William Redfield  
Robert O. Reynolds  
Rodney Rood  
Mrs. Don Hayden Rose  
Dickinson Ross  
Henry Salvatori  
Taft B. Schreiber  
Mrs. Frank Roger Seaver  
Richard C. Seaver  
William T. Sesnon, Jr.  
Forrest N. Shumway  
H. Russell Smith  
James Stewart  
Leonard H. Straus  
Robert Strub  
Mrs. E. Hadley Stuart  
Charles B. Thornton  
Paul W. Trousdale  
John V. Vaughn  
Harry Volk  
Hal Wallis  
Mrs. Donald K. Washburn  
Ray Watt  
John Wayne  
Robert Welbourne  
Jack Wrather  
Robert Young  
Paul Ziffren

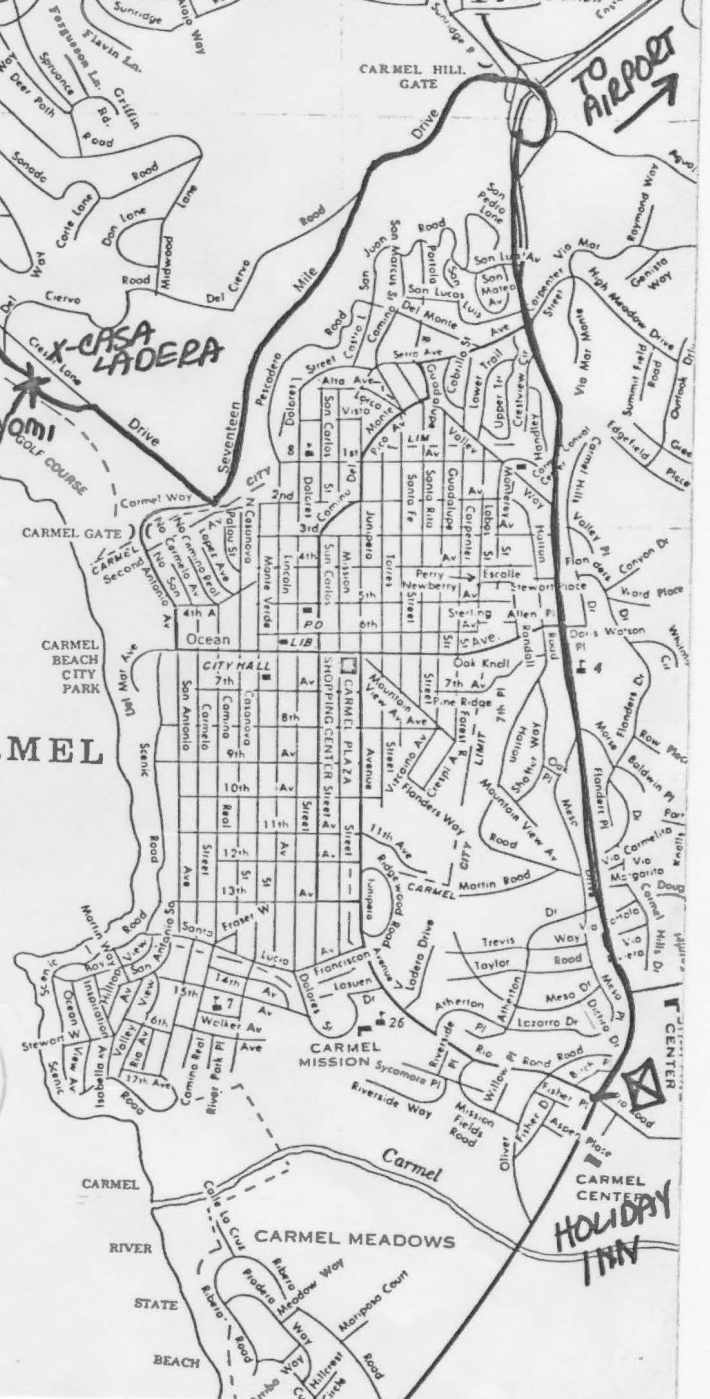
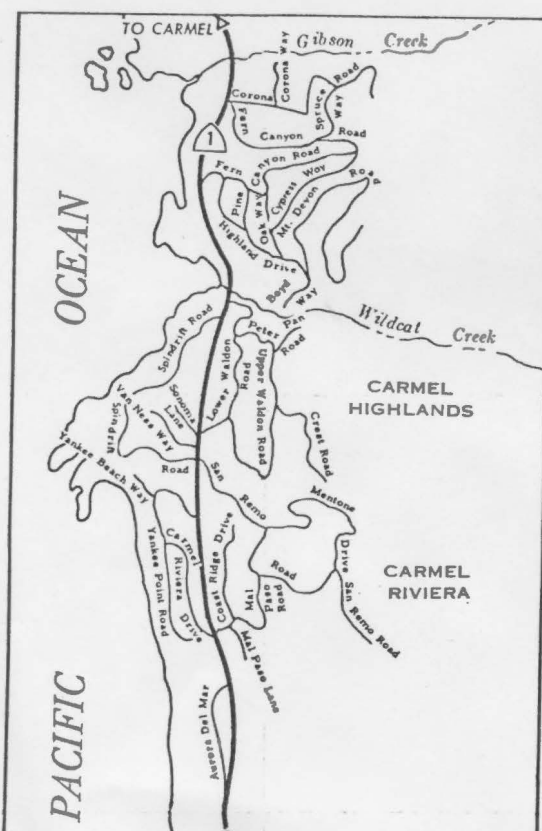


# Academic Delegates from Universities and Colleges

College of Notre Dame .....	1851	Westmont College .....	1937
University of the Pacific .....	1851	California State Polytechnic University, Pomona .....	1938
University of Santa Clara .....	1851	St. John's College .....	1939
Mills College .....	1852	Alabama Christian College .....	1942
University of San Francisco .....	1855	Northrop Institute of Technology .....	1942
San Jose State University .....	1857	East Los Angeles College .....	1945
Chapman College .....	1861	Claremont University Center .....	1946
University of Illinois Medical School .....	1867	Claremont Men's College .....	1946
University of California, Berkeley .....	1868	El Camino Community College .....	1946
Hebrew Union College .....	1875	California State University at Los Angeles .....	1947
University of Southern California .....	1880	California State University at Sacramento .....	1947
Golden Gate University .....	1881	Columbia Christian College .....	1947
University of California at Los Angeles .....	1881	El Camino College .....	1947
Pacific Union College .....	1882	Fuller Theological Seminary .....	1947
Woodbury University .....	1884	Los Angeles Pierce College .....	1947
School of Theology at Claremont .....	1885	Orange Coast College .....	1947
Stanford University .....	1885	University of Judaism .....	1947
Occidental College .....	1887	Southwestern Christian College .....	1948
Pomona College .....	1887	California State University at Long Beach .....	1949
York College .....	1890	Los Angeles Trade Tech College .....	1949
California Institute of Technology .....	1891	Los Angeles Valley College .....	1949
David Lipscomb College .....	1891	Los Angeles Harbor College .....	1949
LaVerne College .....	1891	Oklahoma Christian College .....	1949
Azusa Pacific College .....	1899	University of San Diego .....	1949
California Polytechnic State University, San Luis Obispo .....	1901	California Baptist College .....	1950
Whittier College .....	1901	United States International University .....	1952
Point Loma College .....	1902	Northeastern Christian Junior College .....	1954
Loma Linda University, La Sierra Campus .....	1905	Harvey Mudd College .....	1955
Abilene Christian College .....	1906	Ohio Valley College .....	1956
Biola College .....	1907	California State University at Northridge .....	1956
University of California at Riverside .....	1907	Lubbock Christian College .....	1956
University of Redlands .....	1907	California State University, Fullerton .....	1957
Freed-Hardeman College .....	1908	California Lutheran College .....	1959
West Coast University .....	1909	Loyola Marymount University .....	1959
Santa Ana College .....	1915	Michigan Christian Junior College .....	1959
Immaculate Heart College .....	1916	California State College at Dominguez Hills .....	1960
Santa Monica College .....	1917	The California State University and Colleges .....	1960
Harding College .....	1919	University of California at Irvine .....	1961
Southern California College .....	1920	University of California at Santa Cruz .....	1961
Claremont Graduate School .....	1925	Pitzer College .....	1963
Mount Saint Mary's College .....	1925	Moorpark College .....	1967
Ventura College .....	1925	Los Angeles South Western College .....	1968
Ventura County Community College District .....	1925	College of the Canyons .....	1969
Scripps College .....	1926	Los Angeles Community College District .....	1969
Los Angeles Baptist College .....	1927	West Los Angeles College .....	1969
Pacific Christian College .....	1928	Oxnard College .....	1975
Los Angeles City College .....	1929	Los Angeles Mission College .....	1975



P  
A  
C  
I  
F  
I  
C



16 Part I—Sat., Sept. 20, 1975 Los Angeles Times ★

**DUE IN CALIFORNIA FOR 3 DAYS**

# Ford Assails Democrats on Energy

**BY JACK NELSON**

Times Washington Bureau Chief

OKLAHOMA CITY—At the first stop of a four-day trip financed partly by the Republican Party but mostly by the taxpayers, President Ford



N  
H  
V  
Ch  
tha  
tee  
da  
set  
op  
C  
wo  
Pr  
it

LA Times

9/19/75

VIEWS DIFFER FROM BETTY FORD'S

# Nancy Reagan Scores 'New Morality'

**BY ROBERT SHOCHAN**

Times Political Writer

WASHINGTON—Nancy Reagan has forcefully criticized the "new morality" among young people, in-



mitment to another human being . . ."

Like Mrs. Ford, Mrs. Reagan also discussed abortion. She charged that "our welfare program making abortions available to under-aged girls regardless of their familial financial