


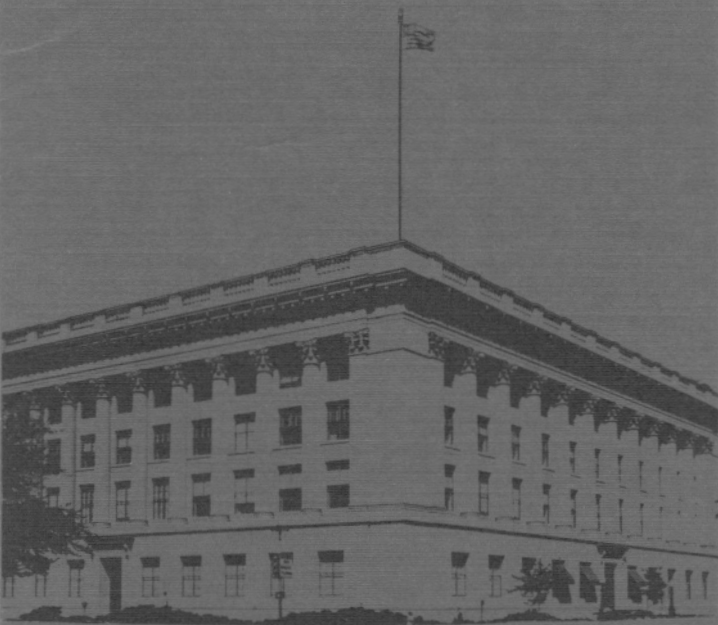
**The original documents are located in Box 2, folder “2/20/75 - Chamber of Commerce Wives” of the Betty Ford White House Papers, 1973-1977 at the Gerald R. Ford Presidential Library.**

### **Copyright Notice**

The copyright law of the United States (Title 17, United States Code) governs the making of photocopies or other reproductions of copyrighted material. Betty Ford donated to the United States of America her copyrights in all of her unpublished writings in National Archives collections. Works prepared by U.S. Government employees as part of their official duties are in the public domain. The copyrights to materials written by other individuals or organizations are presumed to remain with them. If you think any of the information displayed in the PDF is subject to a valid copyright claim, please contact the Gerald R. Ford Presidential Library.



the  
national  
chamber  
... voice of business



CHAMBER OF COMMERCE OF THE UNITED STATES  
1615 H STREET, N.W. / WASHINGTON, D. C. 20006

## FOREWORD

Across from historic Lafayette Square and the White House, in an imposing columned building as much admired as its historic surroundings, the Chamber of Commerce of the United States stands in a fitting home—the national headquarters of the largest and most influential business federation of our country.

It is an organization of grass roots: of businessmen and women, firms and organizations whose voluntary leaders and participants and professional leadership all stand, speak and act for American business. Its work began April 23, 1912.

Today it is recognized as a preeminent representative of the private enterprise system. Its goal is to foster individual initiative and self-reliance—and to improve and protect the competitive market economy, for the long-range good of the country.

The National Chamber's role as spokesman for business is unique. Here in the nation's capital it is deeply engaged in three broad endeavors:

- To work in close cooperation with the Congress and the Executive Branch of the government.
- To represent and advocate the best interests and viewpoints of its broad business community membership on economic and social problems of national importance.
- To coordinate the many interests and related activities of our members and affiliated organizations into common goals and mutual gains.

We are living in an age when the business community and our economic system are under frequent and often distorted attacks.

As "The Voice of Business," the National Chamber strives to maintain the credibility and respect of business and the American private enterprise system.

## VOICE OF BUSINESS

To help shape events, our laws and our social environment, American business must speak out with greater force and credibility than ever before. Thus, was born the National Chamber's "Voice of Business," an extraordinary communications concept. Our communications effort is not peripheral—rather, it is central to the overall objectives of demonstrating and letting the world know, so to speak—that business is vibrant with ideas, viewpoints and goals.

Coordinated. Strong. Credible. And if need be: Instant. Our "Voice of Business" program communicates the business viewpoint to scores of media fronts. It interprets business and its aims; it seeks to eliminate public misunderstandings of our work. The

president of the National Chamber—the full-time spokesman—personifies the vast communications effort reflecting the research, work and ideas of more than 1,200 volunteer businessmen on 35 Chamber committees and 50 specialists and media experts. The program includes:

- Publication of the biweekly *Washington Report*, which reports on Chamber activities and interprets national events and trends of interest to business for more than 230,000 Chamber members, government officials, news media and other opinion molders.
- Publication of *Nation's Business*, a monthly magazine with more than 890,000 circulation.
- A weekly radio network program, *What's the Issue?*, distributed to more than 500 Mutual Broadcasting System stations and to more than 150 independent stations.
- Nationwide radio and television airing of editorials, news commentaries and public service messages.
- Daily mailing of 10,000 pieces of literature in response to needs of members and inquiries from the general public.
- Weekly distribution of *Congressional Action*, a thorough weekly rundown on legislative issues.
- Distribution of a weekly newspaper column, *The Voice of Business*, by Chamber President Arch Booth to more than 500 newspapers with a combined circulation of about 9 million in 46 states and to nearly 300 radio and television stations.
- Frequent radio and television guest/panelist appearances; speeches; video presentations.
- Signed editorials by President Booth sent to 3,500 member chambers and trade and professional associations for use in their publications.

## I. CHAMBER FEDERATION

The Chamber of Commerce of the United States—the National Chamber—is a federation comprising business and professional persons, firms and organizations.

The term "federation" implies a unique relationship that is best expressed as: "an organization of organizations."

As a federation, the Chamber is able to present a coordinated stand on major issues which affect our private enterprise system. In essence, the many organizations entrust the National Chamber as their representative to voice their interests and opinions on vital national issues. It is the only U.S. organiza-

tion representing business in every congressional district.

The federated form of organization has proven to have many advantages:

- The Chamber can present a unified voice for business at the national level.
- Local autonomy is maintained.
- The National Chamber concentrates on issues that are national in scope; the local chambers and state chambers emphasize action at the local and state levels. Trade and professional associations work at both state and national levels.

It should be emphasized that a federation not only exemplifies intergroup cooperation but also cooperation between individual groups.

## II. FEDERATION MEMBERS

The National Chamber comprises two groups of members:

1. Business and Professional Members. These range from the largest corporations to the smallest single proprietorships and include nearly every profession. They total approximately 46,000 firms, corporations and individuals.
2. Organization Members. These include local, state and regional chambers of commerce; American Chambers of Commerce Abroad, and trade and professional associations. They total more than 3,500, including more than 1,000 trade and professional groups.

The underlying representation of more than 5 million includes men and women who belong to the associations and chambers of commerce which, in turn, have organization membership in the National Chamber.

## III. OBJECTIVES AND ACTIVITIES

The National Chamber's activities are aimed at two broad objectives:

1. To maintain and strengthen freedom of choice, the right to private property, and the private enterprise system, and
2. To preserve, improve and create a greater understanding of our form of representative self-government.

The Chamber acts only on problems and issues that are national in character, timely in importance, and general in application to all business. In consistently meeting these criteria, it truly represents the business community as a whole. A principal job of the Chamber then, is to establish and carry out policy about the most important issues affecting the

market system.

The broad spectrum of National Chamber activities includes:

- Research—to make careful analyses of national problems.
- Policy Making—to transform business thinking into Chamber policy.
- Government and Business Relations—to develop reciprocal understanding between government and business; to inform Congress and federal agencies about what business is doing.
- Communications—to keep all lines of communication open throughout the Chamber federation; to inform business about what Congress and the federal agencies are doing; to disseminate information on business and governmental developments affecting the economy and to make known the chamber viewpoint to the public at large.
- Federation Development—to increase the effectiveness of business and professional organizations throughout the country and abroad.
- Program Development—to provide models, guidelines, and general information about programs that businessmen can use to help alleviate problems in their communities.

## IV. CHAMBER LEADERSHIP

The top officers of the National Chamber are:

Chairman of the Board of Directors  
President  
Vice Chairman of the Board of Directors  
Chairman of the Executive Committee  
Six Vice Presidents  
Treasurer

The Chairman of the Board of Directors is the principal elective officer, elected by the Board for one term of one year and charged with broad responsibilities.

The President, who is the chief staff operating officer, is appointed by the Chairman, with concurrence of the Board. All other principal officers are elected annually by the Board.

## V. THE WASHINGTON ORGANIZATION

There are more than 400 employees at the National Chamber headquarters in Washington, D. C., many of whom are specialists in various fields of business interest.

The Washington headquarters is organized into five functional elements:

- 1) Program Development and Implementation

- 2) Legislative Action
- 3) Economic Analysis and Study
- 4) Communications
- 5) Public Affairs and Federation Development

Each function is headed by a general manager who reports directly to the Executive Manager.

#### 1. Program Development and Implementation

Program Development and Implementation is divided into four groups which develop policies and action programs dealing with current problems and legislative issues. The four groups are:

- Human and Community Resources Development
- National Economic Development
- International
- Center for International Business Relations

#### 2. Legislative Action

Legislative Action's function is to gain support for the prevailing business viewpoint in Congress through direct testimony, prepared statements, telegrams and other effective means. To generate support from the grass roots, the Legislative staff helps organize Congressional Action Committees throughout the nation, and regularly provides legislative information to keep members informed and alert to action opportunities.

#### 3. Economic Analysis and Study

The work of Economic Analysis and Study is threefold:

- To forecast future economic and social issues most likely to spark legislative action;
- To analyze national economic issues and trends;
- To further economic understanding.

The Council on Trends and Perspective, composed of leading experts in many fields, is a unique part of this group. Its task is to anticipate critical issues that may affect the country and the business community 10 or more years from now. The Council is not bound by Chamber policy. Its reports are turned over to the Board for referral to the proper Chamber committees for study and possible action.

#### 4. Communications

Communications publicizes the Chamber's policies and activities. It builds a better understanding among the members, other businesses, government and the public, of our business system and the Chamber's work. This group includes the News Department and the Audio-Visual Department, which operates a Broadcast Center equipped with modern videotape, film and other recording facilities.

#### 5. Public Affairs and Federation Development

This functional element undertakes specific activities designed to motivate, organize and train (educate) the membership at the grass roots level so they can act to recommend decisions on national issues.

It also serves as the primary means for promoting use of National Chamber programs, activities and materials designed for grass roots action, such as: Economic Understanding, Political Participation, Congressional Action, Business-Consumer Relations, Environmental Protection, Interpreting Business, and other Program Development activities designed for field implementation—and works to develop the increasing effectiveness of the organization members of the federation through these departments:

Association	Institute
Center for Interpreting Business	Public Affairs
Local Chamber of Commerce	Division Offices
State Chamber of Commerce	

#### Chamber Committees and Panels

In nearly all aspects of its work, the Chamber benefits from the help and guidance of over 1,200 business, professional, and educational leaders who voluntarily serve on 35 Chamber committees, panels and task forces.

In addition to analyzing policy proposals which are submitted from many member sources, these committees initiate policy proposals submitted to the Board for action and also work to:

- Help the Chamber anticipate and respond to new developments in the affairs of our nation.
- Offer effective approaches for dealing with economic and social problems.
- Advise on policy and recommend action.
- Provide expert witnesses to testify before Congressional committees.

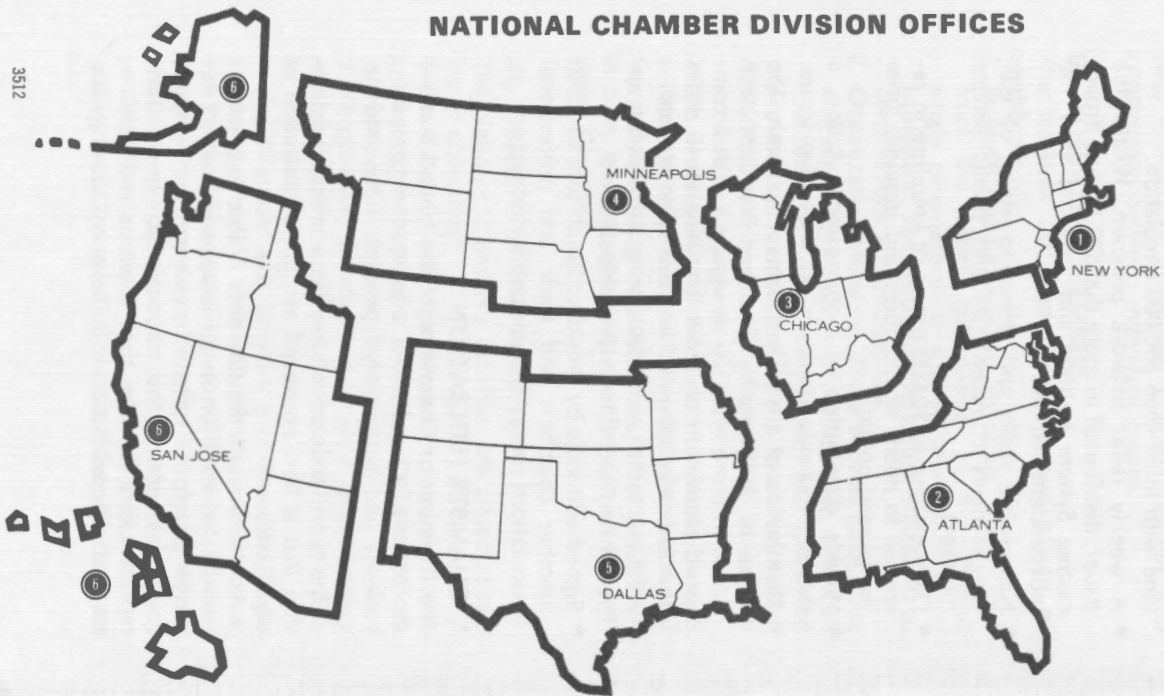
#### How the National Chamber is financed

The National Chamber generates the bulk of its income to carry on its work through membership investments from business and professional members.



## NATIONAL CHAMBER DIVISION OFFICES

3512



**1 NORTHEASTERN**  
711 Third Avenue  
New York, New York 10017  
(212) 697-5530

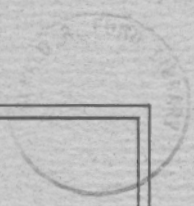
**2 SOUTHEASTERN**  
62 Perimeter Center East  
Atlanta, Georgia 30346  
(404) 256-4910

**3 NORTHERN CENTRAL**  
900 Commerce Drive  
Oak Brook, Illinois 60521  
(312) 887-0850

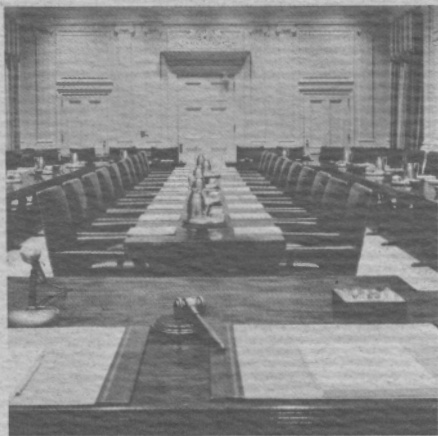
**4 NORTHWESTERN**  
6800 France Avenue South  
Minneapolis, Minnesota 55435  
(612) 925-2400

**5 SOUTHWESTERN**  
Braniff Tower, Suite 438  
Exchange Park, Dallas, Texas 75235  
(214) 358-3411

**6 WESTERN**  
100 Park Center Plaza  
San Jose, California 95113  
(408) 275-8110



# Who's Who on the Board



1974-1975

OFFICERS AND DIRECTORS  
FOR 1974-75

OFFICERS

Chairman of the Board of Directors  
WALTER P. REAGAN, Chairman of the Board, RTD  
President, The Commercial Club

President  
WALTER P. REAGAN, Chairman of the Board, RTD  
President, The Commercial Club

Vice Chairmen of the Board of Directors  
CLAYTON K. BRIDGES, Vice Chairman of the Board, The  
National Bank of Washington, Washington, Maryland

President of the Executive Committee  
EDWARD S. BLISS, President and Chief Executive Officer  
The Commercial Club

WHO'S WHO ON THE BOARD

*This booklet contains biographical data about the Officers and Directors of the Chamber of Commerce of the United States.*

*The Chamber's Board of Directors consists of a Chairman of the Board, a President, a Vice Chairman of the Board, a Chairman of the Executive Committee, six Vice Presidents, a Senior Council of five former principal elective officers, a Treasurer, and fifty elective directors.*

## OFFICERS AND DIRECTORS FOR 1974-75

### OFFICERS

#### *Chairman of the Board of Directors*

CHARLES H. SMITH, JR., Chairman of the Board, SIFCO Industries, Inc., Cleveland, Ohio.

#### *President*

ARCH N. BOOTH, Chamber of Commerce of the United States, Washington, D.C.

#### *Vice Chairman of the Board of Directors*

CLINTON MORRISON, Vice Chairman of the Board, First National Bank of Minneapolis, Minneapolis, Minnesota.

#### *Chairman of the Executive Committee*

EDWARD B. RUST, President and Chief Executive, State Farm Insurance Companies, Bloomington, Illinois.

#### *Vice Presidents*

J.D. ANDERSON, President, Guarantee Mutual Life Company, Omaha, Nebraska.

MARION M. FIDLAR, Chairman of the Board, Mountain Fuel Supply Company, Salt Lake City, Utah.

DANIEL L. GOLDY, President and Director, International Systems & Controls Corporation, Houston, Texas.

DAVID L. GROVE, Ph.D., Vice President and Chief Economist, IBM Corporation, Armonk, New York.

HERBERT S. RICHEY, President and Chief Executive Officer, The Valley Camp Coal Company, Cleveland, Ohio.

EUGENE B. SYDNOR, JR., President, Southern Department Stores, Richmond, Virginia.

#### *Senior Council*

JENKIN LLOYD JONES, Editor and Publisher, The Tulsa Tribune, Tulsa, Oklahoma.

F. RITTER SHUMWAY, Honorary Chairman of the Board, Sybron Corporation, Rochester, New York.

ARCHIE K. DAVIS, Chairman of the Board (Retired), Wachovia Bank and Trust Company, N.A., Winston-Salem, North Carolina.

WILLIAM S. LOWE, Retired Chairman of the Board and Consultant, A.P. Green Refractories Co., Mexico, Missouri.

EDWARD B. RUST, President and Chief Executive, State Farm Insurance Companies, Bloomington, Illinois.

#### *Treasurer*

WILLIAM K. EASTHAM, President and Director, S.C. Johnson & Son, Inc., Racine, Wisconsin.



## ELECTIVE DIRECTORS

	Term Expires		
JAMES G. AFFLECK, Ph.D., President, American Cyanamid Company, Wayne, New Jersey.	1975	EARL D. HILBURN, President and Director, Western Union Telegraph Company, Upper Saddle River, New Jersey.	1976
EDWARD R. ANNIS, M.D., Senior Vice President, Physicians Planning Service Corporation, New York, New York.	1975	HARVEY KAPNICK, Chairman, Arthur Andersen & Company, Chicago, Illinois.	1976
ALFRED J. BARRAN, President, General Telephone Company of the Northwest, Inc., Everett, Washington.	1976	RICHARD L. KATTEL, President, Citizens and Southern National Bank, Atlanta, Georgia.	1975
PAUL BATCHELLER, President, Zip Feed Mills, Inc., Sioux Falls, South Dakota.	1976	JOHN O. LOGAN, President and Chief Executive Officer, Universal Oil Products Company, Des Plaines, Illinois.	1975
CLEO W. BLACKBURN, Ph.D., Consultant, Board for Fundamental Education, Indianapolis, Indiana.	1976	OTIS M. MADER, President, ALCOA Building Industries, Pittsburgh, Pennsylvania.	1975
CHARLES H. CRUTCHFIELD, President, Jefferson-Pilot Broadcasting Company, Charlotte, North Carolina.	1975	ROBERT F. MAGILL, Vice President, General Motors Corporation, Detroit, Michigan.	1975
H. ROBERT DIERCKS, Vice Chairman of the Board, Cargill, Inc., Minneapolis, Minnesota.	1976	LEE L. MORGAN, President, Caterpillar Tractor Company, Peoria, Illinois.	1976
ROBERT W. DOWNING, Vice Chairman and Chief Operating Officer, Burlington Northern, Inc., St. Paul, Minnesota.	1976	WILLIAM J. MOSHOFSKY, Vice President — Government Affairs, Transportation and Environment, Georgia-Pacific Corporation, Portland, Oregon.	1976
ROSCOE L. EGGER, JR., Partner, Price Waterhouse & Company, Washington, D.C.	1975	J. KEVIN MURPHY, President and Chief Executive Officer, Purolator Services, Inc., Lake Success, New York.	1976
ROBERT F. ERBURU, President, The Times Mirror Company, Los Angeles, California.	1976	THOMAS F. MURRAY, Executive Vice President and Chief Investment Officer, Equitable Life Assurance Society of the United States, New York, New York.	1976
MARK EVANS, Vice President and Director of Public Affairs, Metromedia, Inc., Washington, D.C.	1976	WILBERT F. NEWTON, Vice President, Corporate Marketing, PPG Industries, Inc., Pittsburgh, Pennsylvania.	1976
WELBY M. FRANTZ, Vice Chairman of the Board, Eastern Express, Inc., Terre Haute, Indiana.	1975	JOHN R. PETTY, Partner, Lehman Brothers Incorporated, New York, New York.	1976
ALFRED M. FULTON, M.D., The Billings Clinic, Billings, Montana.	1975	JOHN T. PIERSON, JR., President and Chief Executive Officer, Vendo Company, Kansas City, Missouri.	1976
JOHN D. GRAY, Chairman, Hart Schaffner & Marx, Chicago, Illinois.	1975	RICHARD A. PURYEAR, JR., Chairman, Director and Chief Executive Officer, Alabama Gas Corporation, Birmingham, Alabama.	1975
WARREN C. HAGEMAN, Group Vice President, U.S. Subsidiaries, Del Monte Corporation, San Francisco, California.	1975	WILLIAM C. RASBERRY, Timberlands and Investments, Shreveport, Louisiana.	1975
GEORGE S. HARRIS, Vice Chairman of the Board, Chicago Metropolitan Mutual Assurance Company, Chicago, Illinois.	1976	TOM B. SCOTT, JR., President and Chief Executive Officer, UNIFIRST Federal Savings & Loan Association, Jackson, Mississippi.	1975
SHEARON HARRIS, Chairman and President, Carolina Power & Light Company, Raleigh, North Carolina.	1976	HAROLD H. SHORT, Chairman of the Board, Flatiron Companies, Boulder, Colorado.	1976
JOHN E. HEALY, II, President, John E. Healy & Sons, Inc., Wilmington, Delaware.	1976	WILLIAM P. SIMMONS, Chairman and President, First National Bank and Trust Company, Macon, Georgia.	1975

ROGER C. SONNEMANN, Vice President,  
Administration and Employee Relations,  
American Metal Climax, Inc.,  
New York, New York. 1976

BERYL W. SPRINKEL, Ph.D., Senior Vice President  
and Economist, Harris Trust and Savings Bank,  
Chicago, Illinois. 1975

WILLIAM J. STEINMETZ, Vice President and  
Treasurer, American Can Company,  
Greenwich, Connecticut. 1975

CHARLES T. STEWART, Senior Vice President,  
General Counsel and Director of Public Affairs,  
J.C. Penney Company, Inc., New York, New York. 1975

ROBERT STUART, Chairman of the Board,  
National Can Corporation, Chicago, Illinois. 1976

ROBERT T. THOMPSON, Senior Partner,  
Thompson, Ogletree and Deakins,  
Greenville, South Carolina. 1975

JAY VANANDEL, Chairman, Amway Corporation,  
Ada, Michigan. 1976

C. WILLIAM VERITY, JR., Chairman of the Board  
and Chief Executive Officer, Armco Steel  
Corporation, Middletown, Ohio. 1975

ANTHONY E. WALLACE, President and  
Chief Executive Officer, The Connecticut  
Light & Power Company, Hartford Connecticut. 1975

RALPH A. WELLER, President and Chief  
Executive Officer, Otis Elevator Company,  
New York, New York. 1975

ALLEN WHITFIELD, Senior Partner, Whitfield,  
Musgrave, Selvy, Kelly & Eddy, Des Moines, Iowa. 1976

WILLIAM G. WHYTE, Vice President— Washington,  
United States Steel Corporation, Washington, D.C. 1975

WALKER WINTER, Partner, Ross, Hardies, O'Keefe,  
Babcock, & Parsons, Chicago, Illinois. 1976

A.S. YOHALEM, Senior Vice President and Director,  
CPC International, Englewood Cliffs, New Jersey. 1975



## AFFLECK, James G. Wayne, New Jersey

**BUSINESS ADDRESS**  
Wayne, New Jersey  
Zip Code 07470  
Phone 201/831-1234

**HOME ADDRESS**  
101 Chestnut Ridge Road  
Saddle River, New Jersey 07458  
Phone 201/825-2779

### FAMILY

Wife's Name, Callie K. Children: 1 son, 2 daughters.

### EDUCATION

Princeton University — Ph.D., BA, MA.  
Deerfield Academy.

### PREDOMINANT BUSINESS AFFILIATION

**President**, American Cyanamid Company

### BUSINESS AFFILIATIONS AND OFFICES HELD:

#### PRESENT

**President and Director**, American Cyanamid Company.

#### PAST

**Vice President**, Division Manager, Department Head, and  
Chemist, American Cyanamid Company.

### NATIONAL CHAMBER SERVICE:

#### PRESENT

**Director**, April 29, 1974 to date.

**Member**, Agribusiness and Rural Affairs Committee; Multi-  
national Corporations Panel.

### ORGANIZATION AFFILIATIONS AND OFFICES HELD:

#### PRESENT

**Trustee**, College of Medicine & Dentistry of New Jersey,  
Manufacturing Chemists' Association.

**Director**, Animal Health Institute.

**Member**, American Chemical Society; American Section,  
Society of Chemical Industry.

#### PAST

**President**, Animal Health Institute; Commercial Develop-  
ment Association.

### REMARKS:

Military Service: USNR (Active) July 1943 to February  
1946; USNR (Inactive) February 1946 to October 1954.

Member, Tuxedo Club, Tuxedo Park, New York; Reformed  
Church, Saddle River, New Jersey.



**ANDERSON, J.D.**  
**Omaha, Nebraska**

**BUSINESS ADDRESS**  
8721 Indian Hills Drive  
Zip Code 68114  
Phone 402/391-2121

**HOME ADDRESS**  
9511 Westchester Lane (68114)  
Phone 402/391-0151

**FAMILY**

Wife's Name, Kathleen. Children: 1 son, 3 daughters.

**EDUCATION**

Oklahoma University, Norman — 1931-1932.  
Central State College, Edmond, Okla. — 1932-1936 (A.B. degree).

**PREDOMINANT BUSINESS AFFILIATION**

**President**, Guarantee Mutual Life Company.

**BUSINESS AFFILIATIONS AND OFFICES HELD:**

**PRESENT**

**Director**, U.S. National Bank of Omaha; Institute of Life Insurance.

**Member**, Executive Round Table Committee of the American Life Insurance Association.

**PAST**

**Director**, Life Insurance Agency Management Association; The Pullman Company; Life Office Management Association.

**NATIONAL CHAMBER SERVICE:**

**PRESENT**

**Vice President**, May 1, 1972 to date.

**Chairman**, Audit Committee.

**Member**, Agribusiness & Rural Affairs, Budget, Community & Urban Affairs, and Executive Committees.

**PAST**

**Director**, April 26, 1971 to May 1, 1972.

**Chairman**, Committee on Goals and Priorities; Crime Prevention and Control Panel.

**Member**, Crime Prevention and Control Panel.

**ORGANIZATION AFFILIATIONS AND OFFICES HELD:**

**PRESENT**

**President**, Downtown Omaha Rotary Club; Mid-America Council, Boy Scouts of America.

**Director**, Mid-America Council, Boy Scouts of America; Metropolitan YMCA; Omaha Chamber of Commerce; Omaha Symphony Association; Boys Town; Junior Achievement; Nebraska Methodist Hospital; Salvation Army.

**Regional Director**, National Conference of Christians and Jews.

**ANDERSON, J.D.**

**Trustee**, Omaha Industrial Foundation.

**Member**, National Board of Trustees of the National Conference of Christians and Jews.

**PAST**

**President**, Omaha Metropolitan Association of Churches; Omaha Chamber of Commerce; Omaha Sales & Marketing Executives Club; Downtown Rotary Club.

**General Chairman**, United Appeal, 1968; N.C.C.J. Brotherhood Dinner, 1966.

**REMARKS:**

Recipient: Cadwallader Award, District 565, Rotary International — 1973; 1973 Brotherhood Award, National Conference of Christians and Jews.

Elected to Board of Governors of Ak-Sar-Ben, 1971.

Crowned King Ak-Sar-Ben LXXVI — October, 1970.

Service to Mankind Award, Omaha Sertoma Club — March 1970.

Americanism Citation for Meritorious Service, B'nai B'rith — 1969.

Silver Beaver Award, Boy Scouts of America — 1967.

Honorary Doctor of Laws, Nebraska Wesleyan University — 1966.

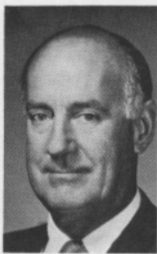
Distinguished Graduate, Central State College — 1965.

Honorary Master Farmer, 4-H and FFA Award, State of Oklahoma — 1952.

Officer, U.S. Navy, World War II.

Member: Navy League; Air Force Association; Omaha Country Club.

Past Chairman of Official Board, St. Paul United Methodist Church, Omaha.



**ANNIS, Edward R., M.D.**  
**New York, New York**

**BUSINESS ADDRESS**  
 292 Madison Avenue  
 Zip Code 10017  
 Phone 212/689-7202

Post Office Box 530726  
 Miami, Florida 33153  
 Phone 305/759-3031

**HOME ADDRESS**  
 One Lincoln Plaza  
 20 West 64th Street (10023)  
 Phone 212/873-4456

**FAMILY**

Wife's Name, Betty McCue Starck. Children: 4 sons, 4 daughters.

**EDUCATION**

University of Detroit, B.S., 1933.  
 Marquette School of Medicine, M.D., 1938.

**PREDOMINANT BUSINESS AFFILIATION**

**Senior Vice President**, Physicians Planning Service Corporation.

**BUSINESS AFFILIATIONS AND OFFICES HELD:**

**PRESENT**

- Director**, Medequip Corporation, Chicago, Illinois.
- Medical Consultant**, Home Life Insurance Company of New York.
- Chairman**, American Professional Practice Association.
- Trustee**, National Association of Residents and Interns.

**PAST**

- President**, American Medical Association; World Medical Association, United States Section of International College of Surgeons; The Denver Corporation.
- Director**, Department of Surgery, Mercy Hospital; Family Service, Miami; Boulevard National Bank, Miami, Florida.
- Surgical Consultant** to the Surgeon General of the U.S. Air Force.

**NATIONAL CHAMBER SERVICE:**

**PRESENT**

- Director**, April 28, 1969 to date.
- Chairman**, Private Pension-Social Security Committee.
- Member**, Special Committee on Nation's Health Care Needs; Bylaws Committee.

**PAST**

- Chairman**, Social Security Committee.
- Member**, Nominating, Science & Technology, Social Security Committees; and Special Committee on Welfare Programs and Income Maintenance.

**ANNIS, EDWARD R., M.D.**

**ORGANIZATION AFFILIATIONS AND OFFICES HELD:**

**PAST**

**Chairman**, former Governor LeRoy Collins' Citizens Medical Committee on Health for the State of Florida; Legislative Committee, Florida State Medical Association; American Professional Practice Association.

**Council Emissary**, World Medical Association.

**Member**, Budget Bureau for Dade County; Senior Citizens Division of the Welfare Planning Council; Speakers Bureau, American Medical Association; Board of Trustees, National Association of Residents and Interns.

**REMARKS:**

Honorary Awards: Brotherhood Award, National Conference of Christians and Jews; A.H. Robins Company Award for "Outstanding Community Service by a Physician," Florida Medical Association; Distinguished Service Award, Creighton University, Omaha; Outstanding Alumnus of the Year, 1964, Marquette University.

Honorary Degrees: Doctor of Science Degree, University of San Diego, 1963; University of Detroit, 1963; Hahnemann Medical College, 1964.

Doctor of Laws Degree, University of Scranton, 1964.

Doctors of Letters Degree, Barry College, Miami, 1966.

Radio-Television Debates including those with Senator McNamara, Michigan, 1962; Senator Proxmire, Wis. 1963; Senator Javits, N.Y., 1963 and 1965; Senator Gore, Tenn., 1965. Nationwide debates with Hubert Humphrey, 1962; Walter Reuther; and Madison Square Garden "Your Doctor Reports."

Numerous radio-television appearances including Johnny Carson Show, Art Linkletter Show, Donna Reed Show, Mike Douglas Show, Joe Pyne Show and others, in addition to appearances for American Medical Association.



## **BARRAN, Alfred J. Everett, Washington**

**BUSINESS ADDRESS**  
Post Office Box 1003  
1800 41st Street  
Zip Code 98201  
Phone 206/258-5611

**HOME ADDRESS**  
22819 Park Road  
Edmonds, Washington 98020  
Phone 206/776-2025

### **FAMILY**

Wife's Name, Jean Lois (Bunny). Children: 4 daughters.

### **EDUCATION**

Denison University, Granville, Ohio, June 1941 — B.A. Degree.  
University of California at Los Angeles, graduate courses.

### **PREDOMINANT BUSINESS AFFILIATION**

**President**, General Telephone Company of the Northwest, Inc.

### **BUSINESS AFFILIATIONS AND OFFICES HELD:**

#### **PRESENT**

**President**, General Telephone Company of Alaska.  
**Director**, Lincoln First Federal Savings & Loan Association, Spokane, Washington; Everett Branch, Seattle-First National Bank, Everett, Washington.

#### **PAST**

**Chairman**, Great Columbia Corporation, 1971-72.  
**President**, General Telephone Company of Indiana, Fort Wayne, Indiana, 1964-67; General Telephone Company of the Northwest, Spokane, Washington, 1958-64.  
**Public Relations Director**, General Telephone Company of California, Santa Monica, California, 1953-58.

### **NATIONAL CHAMBER SERVICE:**

#### **PRESENT**

**Director**, April 29, 1974 to date.  
**Member**, Consumer Affairs Committee.

### **ORGANIZATION AFFILIATIONS AND OFFICES HELD:**

#### **PRESENT**

**Director**, Independent Colleges of Washington; Seattle-King County Economic Development Council; Snohomish County Economic Development Council; Seattle Junior Achievement; Western Environmental Trade Association of Washington; United Way of Snohomish County.  
**Trustee**, Freedoms Foundation at Valley Forge; Everett General Hospital; Cardio-Pulmonary Research Institute; Pacific Science Center.

## **BARRAN, ALFRED J.**

**Member**, Business Development Program of the College of Economic & Business at Washington State University; Central Washington State College Foundation; Gonzaga Business Advisory Council; Council on Washington's Future.

### **PAST**

**Chairman**, Association of Washington Business.  
**President**, Spokane, Washington Chamber of Commerce; Spokane Junior Achievement.  
**Trustee**, Seattle Chamber of Commerce.  
**Director**, Indiana State Chamber of Commerce.  
**Member**, Washington State Governor's Task Force on Rural Affairs; Washington State Governor's Committee for a New Tax Policy.

### **REMARKS:**

Church, Presbyterian.  
Social Affiliations: Sigma Alpha Epsilon Fraternity; Washington Generals; Everett Golf & Country Club; Everett Cascade Club; Edmonds Yacht Club; Seattle Rainier Club.  
Military Service, served during World War II. Entered Navy as Seaman Second Class in June 1941. Graduated as Ensign from U.S. Naval Officers Training School in January 1942. Served aboard subchasers and escort type ships. Had command of escort ships for two years while assigned to European and Pacific theatres of operation. Participated in the Normandy and Okinawa landings and the occupation of Korea and China. Released to inactive duty as Lieutenant Commander 1946.  
Named MR. PRIVATE ENTERPRISE for the State of Washington by the membership of the Association of Washington Business, the only businessman to have been accorded this honor in the history of the Association (April 24, 1964).

Named to *Sports-Illustrated's* Silver Anniversary All-American Football Team, December 1964.

Recipient: Denison University Citation in recognition of outstanding achievements and services which reflect honor upon Denison University, June 1966; "National Recognition Award" from Freedoms Foundation at Valley Forge, one of four Americans selected in 1972 to receive this honor.



**BATCHELLER, Paul A.**  
**Sioux Falls, South Dakota**

**BUSINESS ADDRESS**  
 Post Office Box 500  
 Zip Code 57101  
 Phone 605/336-3331

**HOME ADDRESS**  
 Route 3, Box 2 (57105)  
 Phone 605/336-9499

**FAMILY**

Wife's Name, Mary. Children: 2 sons, 1 daughter.

**EDUCATION**

High School.

**PREDOMINANT BUSINESS AFFILIATION**

**President**, Zip Feed Mills, Inc.

**BUSINESS AFFILIATIONS AND OFFICES HELD:**

**PRESENT**

**Director**, Northwestern National Bank; Sioux Falls Stock Yards Company; Midwest Feed Manufacturers' Association.

**NATIONAL CHAMBER SERVICE:**

**PRESENT**

**Director**, May 1, 1972 to date.

**Member**, Accrediting Board; Agribusiness and Rural Affairs Committee.

**PAST**

**Member**, Membership, Taxation, and Unemployment and Workmen's Compensation Committees.

**ORGANIZATION AFFILIATIONS AND OFFICES HELD:**

**PRESENT**

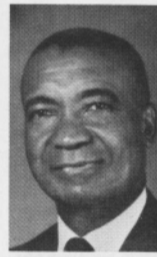
**Director and Past President**, Greater South Dakota Association.

**PAST**

**General Chairman**, National Corn Picking Contest, 1964.  
**Past President and Director**, Sioux Falls YMCA; Sioux Valley Hospital Board.  
**Past President**, Sioux Falls Chamber of Commerce.  
**Director**, American Feed Manufacturers' Association.

**REMARKS:**

Episcopal Church; All Masonic organizations and Shrine (Past Potentate); Past Grand Counsellor for United Commercial Travellers.



**BLACKBURN, Cleo Walter**  
**Indianapolis, Indiana**

**BUSINESS ADDRESS**  
 156 East Market Street  
 Zip Code 46204  
 Phone 317/639-4281

**HOME ADDRESS**  
 600 North Alabama (46204)

**FAMILY**

Children: 1 son, 2 daughters.

**EDUCATION**

Southern Christian Institute, Edwards, Mississippi, 1924-28.  
 Butler University (A.B.), Indianapolis, Indiana, 1928-32.  
 Fisk University, (M.A.), Nashville, Tenn., 1932-33.  
 Graduate Fellow, Pendle Hill, Wallingford, Pa., 1933-34.  
 University of Pennsylvania, Summer of 1934.  
 Rosenwald Fellow, Indiana University, Bloomington, Indiana (1941-42).

**PREDOMINANT BUSINESS AFFILIATION**

**Consultant**, Board for Fundamental Education.

**BUSINESS AFFILIATIONS AND OFFICES HELD:**

**PRESENT**

**President**, Community Contractors Corp.

**Executive Director**, Flanner House, February 1936 to date.

**PAST**

**President**, Board for Fundamental Education (1969-1973); Jarvis Christian College, Hawkins, Texas (1953-1964).

**Founding Executive Director**, Board for Fundamental Education (1948).

**Sociology Research Assistant**, Fisk University, Nashville, Tenn. (1932).

**Sociology Instructor**, Knoxville College, Knoxville, Tenn.

**Research Director** of study made by T.B. Association, Chester, Pa.

**Research Associate**, Tuskegee, Alabama.

**NATIONAL CHAMBER SERVICE:**

**Director**, April 26, 1971 to date.

**Member**, Community and Urban Affairs, and Education and Manpower Development Committees.

**ORGANIZATION AFFILIATIONS AND OFFICES HELD:**

**PRESENT**

**Member**, The American Sociological Society; National Federation of Settlements and Neighborhood Centers, Inc.; National Society for the Study of Education; International Society of Theta Phi; Life member, The National Association for the Advancement of Colored People; Young Men's

## BLACKBURN, CLEO WALTER

Christian Association; International Self-Help Housing Association; Adult Education Association of the U.S.A.; Indianapolis Social Workers Club.

**Board of Directors:** National Center for Voluntary Action; Greater Indianapolis Progress Committee; Central Indiana Better Business Bureau.

**Chairman,** Building Research Advisory Board; Special Advisory Committee on Building Skills Career Training and Development of the National Academy of Sciences.

### PAST

**Director,** Indianapolis Urban League.

**Member,** Indiana State Board of Education; Board of Managers of the United Christian Missionary Society; Indiana Council for Children and Youth; Indianapolis Rent Control Board; Indianapolis Public Housing Authority; Indianapolis Christmas Committee; Advisory Health Council; Indiana Advisory Committee on Recreation; Indiana Division of the American Negro Emancipation Centennial Authority.

### REMARKS:

Member: Sigma Pi Phi Fraternity; Kappa Alpha Psi Fraternity; 33° Mason in the Wm. A. Heatherman Class, The United Supreme Council of the Ancient and Accepted Scottish Rite of Freemason of the Northern Jurisdiction, Prince Hall Affiliation; Constantine Consistory No. 25; Persion Temple No. 46, A.E.A.O. Noble of the Mystic Shrine; Southern Cross Lodge No. 39, F. & A.M.; Indiana Lodge No. 104; I.B.P.O.E. of W.; Indianapolis Rotary.

Holder of 1940 Indianapolis Junior Chamber of Commerce Distinguished Service Award; Honorary Doctor of Divinity Degree from Northwest Christian College, Eugene, Oregon, 1955; from Drake University, Des Moines, Iowa, 1956; Doctor of Humanities Degree from Indiana Central College, Indianapolis, Indiana, 1966; Doctor of Humane Letters Degree from Wabash College, Crawfordsville, Indiana, 1968; from Butler University, 1970.

Ordained Minister — Disciples of Christ.



## CRUTCHFIELD, Charles H. Charlotte, North Carolina

### BUSINESS ADDRESS

One Julian Price Place  
Zip Code 28202  
Phone 704/374-3761

### HOME ADDRESS

3801 Sedgewood Circle (28211)  
Phone 704/364-6390

### FAMILY

Wife's Name, Jacquelin. Children: 1 son, 1 daughter.

### EDUCATION

Wofford College, Spartanburg, 1929-30.

Management Development Seminar (sponsored by National Association of Broadcasters).

Harvard Graduate School of Business Administration — 1959.

### PREDOMINANT BUSINESS AFFILIATION

**President,** Jefferson-Pilot Broadcasting Company.

### BUSINESS AFFILIATIONS AND OFFICES HELD:

Entire business career has been with Jefferson-Pilot Broadcasting Company.

### NATIONAL CHAMBER SERVICE:

#### PRESENT

**Director,** April 29, 1974 to date.

**Member,** Accrediting Board; Business Overview, and Public Affairs Committees.

### ORGANIZATION AFFILIATIONS AND OFFICES HELD:

#### PRESENT

**Director,** CBS Television Affiliates Advisory Board.

**Board of Visitors,** Appalachian State University.

#### PAST

**Chairman,** North Carolina Radio Free Europe Fund Drive, 1964.

**President,** Charlotte Chamber of Commerce, 1971.

**Director,** CBS District Three, 1971-73.

**Director and Representative,** National Affairs Committee of the National Council on Crime and Delinquency, 1971.

**Secretary-Treasurer,** CBS-TV Network Affiliates Advisory Board, 1973.

### REMARKS:

Myers Park Presbyterian Church, Charlotte.

Member: North Carolina Broadcasting Hall of Fame, 1970; London Dinner Club of Charlotte; Quail Hollow Country Club; Charlotte Country Club; Charlotte City Club.

Honorary Degree, Doctor of Humane Letters (Appalachian State University) 1973.

## CRUTCHFIELD, CHARLES H.

Awards: Broadcast Preceptor Award, San Francisco State College, 1967; Charlotte Advertising Club's "Silver Medal Award," 1968; Distinguished Citizenship Award, North Carolina Civitan Club, 1971; Charlotte Bar Association's "Man of the Year" Award, 1968; Charlotte Exchange Club's "Book of Golden Deeds" Award, 1968.



## DAVIS, Archie K. Winston-Salem, North Carolina

**BUSINESS ADDRESS**  
Post Office Box 10689  
Zip Code 27108  
Phone 919/722-6321

**HOME ADDRESS**  
2828 Forest Drive (27104)  
Phone 919/722-8962

### FAMILY

Wife's Name, Mary Louise. Children: 3 sons, 1 daughter.

### EDUCATION

Woodberry Forest School, Woodberry Forest, Virginia;  
University of North Carolina, A.B. degree, Phi Beta Kappa;  
Stonier Graduate School of Banking, Rutgers University.

### PREDOMINANT BUSINESS AFFILIATION

**Chairman of the Board**, (Retired) Wachovia Bank and Trust Company, N.A.

### BUSINESS AFFILIATIONS AND OFFICES HELD:

#### PRESENT

**Vice Chairman**, The Duke Endowment.

**President**, Research Triangle Foundation of North Carolina.

**Director**, American Telephone and Telegraph Company; Southern Railway Company; Chatham Manufacturing Company; Sellers Manufacturing Company; Sellers Dyeing Company; Jordan Spinning Company; Royal Cotton Mills; Media General, Inc.; Advisory Board, Commodity Credit Corporation.

#### PAST

**President**, American Bankers Association (1965-66).

**Director**, Western Electric Company; Integon Corporation.

**Member**, North Carolina Senate, representing Forsyth County (1958-1962).

**Director**, Federal Reserve Bank of Richmond, Charlotte Branch (1950-56).

### NATIONAL CHAMBER SERVICE:

#### PRESENT

**Member**, Senior Council, April 29, 1974 to date.

**Member**, Budget, Executive, and Nominating Committees; National Chamber Foundation Board.

#### PAST

**Director**, Finance, June 14, 1957 to March 14, 1958.

**Vice President**, March 14, 1958 to May 1, 1961.

**Director at Large**, May 1, 1961 to April 26, 1965.

**Director**, April 29, 1968 to April 26, 1971.

**President**, April 26, 1971 to May 1, 1972.



**DAVIS, ARCHIE K**

**Chairman of the Board**, May 1, 1972 to April 30, 1973.

**Chairman of the Executive Committee**, April 30, 1973 to April 29, 1974.

**Chairman**, Finance Committee; Special Committee to Consider the Problems of the Dollar.

**Member**, Agriculture, Banking and Monetary Policy, Budget, Economic Security, Finance, International, and Taxation Committees; Balance of Payments Advisory Panel; Task Force on Economic Growth & Opportunity.

**ORGANIZATION AFFILIATIONS AND OFFICES HELD:**

**PRESENT**

**Trustee**, Committee for Economic Development; Joint Council on Economic Education.

**Chairman**, North Carolina Foundation of Church-Related Colleges.

**Member**, National Commission on Productivity.

**PAST**

**Trustee**, University of North Carolina, Salem Academy and College, Converse College.

**President**, Winston-Salem Rotary Club.

**REMARKS:**

Honorary degrees: Doctor of Laws, Elon College, 1964; Doctor of Laws, University of North Carolina, 1967; Doctor of Laws, Wake Forest University, 1967; Doctor of Laws, Moravian College; Doctor of Humanities, High Point College, 1967; Doctor of Science, Catawba College, 1972.



**DIERCKS, H. Robert  
Minneapolis, Minnesota**

**BUSINESS ADDRESS**

Cargill Building  
Zip Code 55402  
Phone 612/473-8811

**HOME ADDRESS**

89 Woodland Circle  
Edina, Minnesota 55424  
Phone 612/926-2394

**FAMILY**

Wife's Name, Elizabeth. Children: 2 sons, 1 daughter.

**EDUCATION**

B.A. University of Minnesota, 1937.

**PREDOMINANT BUSINESS AFFILIATION**

**Vice Chairman of the Board**, Cargill, Inc.

**BUSINESS AFFILIATIONS AND OFFICES HELD:**

**PRESENT**

**President**, Associated Industries of Minneapolis.

**Director**, Midland National Bank; Tradax International; Soo Line Railroad; United Way of Minneapolis.

**PAST**

**President and Director**, St. Louis Merchants Exchange.

**Director**, Board of Trade, City of Chicago.

**NATIONAL CHAMBER SERVICE:**

**PRESENT**

**Director**, April 27, 1970 to date.

**Member**, Agribusiness & Rural Affairs, Audit, Canada-United States (U.S. Section), and Nominating Committees.

**PAST**

**Chairman**, Canada-United States Committee (U.S. Section); Task Force on the Metric System.



**DOWNING, Robert W.  
St. Paul, Minnesota**

**BUSINESS ADDRESS**  
176 East Fifth Street  
Zip Code 55101  
Phone 612/298-2184

**HOME ADDRESS**  
2028 Upper St. Dennis Road (55116)  
Phone 612/690-4575

**FAMILY**

Wife's Name, Mary. Children: 1 son, 2 daughters.

**EDUCATION**

B.S. civil engineering, Yale University, 1935.

**PREDOMINANT BUSINESS AFFILIATION**

**Vice Chairman and Chief Operating Officer,**  
Burlington Northern Inc.

**BUSINESS AFFILIATIONS AND OFFICES HELD:**

**PRESENT**

**Chairman and Director,** Colorado & Southern Ry. Co.,  
Denver, Colorado; Fort Worth & Denver Ry. Co., Fort  
Worth, Texas.

**President and Director,** Portal Pipe Line Company,  
Dallas, Texas.

**Director,** Western Fruit Express Company, Washington,  
D.C.; Northwest Bancorporation, Minneapolis, Minnesota;  
Northwestern National Bank of Saint Paul, St. Paul, Min-  
nesota.

**Trustee,** Minnesota Mutual Life Insurance Company, St.  
Paul, Minnesota.

**NATIONAL CHAMBER SERVICE:**

**PRESENT**

**Director,** April 29, 1974 to date.

**Member,** Transportation Committee.

**ORGANIZATION AFFILIATIONS AND OFFICES HELD:**

**PRESENT**

**Director,** St. Paul Foundation; YMCA, St. Paul, Minnesota.



**EASTHAM, William K.  
Racine, Wisconsin**

**BUSINESS ADDRESS**  
1525 Howe Street  
Zip Code 53403  
Phone 414/554/2000

**HOME ADDRESS**  
500 South Creek Road (53402)  
Phone 414/639-2050

**FAMILY**

Wife's name, Dorothy B. Children: 2 daughters.

**EDUCATION**

American Institute of Banking.  
New York University.

**PREDOMINANT BUSINESS AFFILIATION**

**President and Director,** S.C. Johnson & Son, Inc.

**NATIONAL CHAMBER SERVICE:**

**PRESENT**

**Treasurer,** April 29, 1974 to date.

**Chairman,** Consumer Affairs Committee.

**Member,** Budget, Executive, and International Commit-  
tees; Investment Advisory Council.

**PAST**

**Director,** April 27, 1970 to April 29, 1974.

**Member,** Consumer Issues, and Nominating Committees;  
Multinational Corporations Panel.

**ORGANIZATION AFFILIATIONS AND OFFICES HELD:**

**PRESENT**

**Director,** Grocery Manufacturers of America, Inc.; Heritage  
Bank of Racine; Racine Zoological Society.

**PAST**

**President and Director,** Racine Chamber of Commerce.

**Director,** Racine Environment Committee.

**REMARKS:**

Major ETO, U.S. Army, World War II.

Member, Racine Country Club.

7th Regiment, New York City.



**EGGER, Roscoe L., Jr.  
Washington, D.C.**

**BUSINESS ADDRESS**  
1801 K Street, N.W.  
Zip Code 20006  
Phone 202/296-0800

**HOME ADDRESS**  
9118 Kittery Lane  
Bethesda, Maryland 20034  
Phone 301/469-6250

**FAMILY**

Wife's Name, Patricia Daue. Children: 2 daughters.

**EDUCATION**

Wabash College; Indiana University, B.S., 1942.  
George Washington University Law School, LL.B., 1950.

**PREDOMINANT BUSINESS AFFILIATION**

**Partner**, Price Waterhouse & Co.

**BUSINESS AFFILIATIONS AND OFFICES HELD:**

**PAST**

Engaged in law practice and practiced as certified public accountant; also with U.S. General Accounting Office.

**NATIONAL CHAMBER SERVICE:**

**PRESENT**

**Director**, April 30, 1973 to date.  
**Member**, Government Operations & Management, and Taxation Committees.

**PAST**

**Member**, Multinational Corporations Panel.

**ORGANIZATION AFFILIATIONS AND OFFICES HELD:**

**PRESENT**

**Chairman**, Governing Board, National Cathedral School; Norwood School Board of Trustees.  
**Director**, Choral Arts Society of Washington.  
**Member**, Kiwanis Club of Washington, D.C.; American Institute of CPAs, Tax Accounting Committee, Federal Taxation Division; District of Columbia Institute of CPAs; Tax Council; Tax Institute of America; American Bar Association; District of Columbia Bar Association; Cathedral Chapter, National Cathedral Foundation.

**PAST**

**President, Vice President, Secretary, Board of Governors**, District of Columbia Institute of CPAs.  
**Chairman**, Finance Committee, **Member**, Long-Range Planning Committee, National Cathedral School.  
**Member**, Society of Sponsors; Episcopal Diocese of Washington; St. John's Church, Bethesda, Maryland; National Cathedral Foundation.

**EGGER, ROSCOE L., JR.**

**REMARKS:**

Member: Columbia Country Club; Metropolitan Club; National Broadcasters Club; Farmington Country Club.  
Military Service: World War II, Captain, European Theatre, 1943-1946 Infantry.



**ERBURU, Robert F.**  
**Los Angeles, California**

**BUSINESS ADDRESS**  
Times Mirror Square  
Zip Code 90053  
Phone 213/486-3814

**HOME ADDRESS**  
1518 Blue Jay Way (90069)  
Phone 213/655-9841

**FAMILY**

Wife's Name, Lois. Children: 2 daughters.

**EDUCATION**

University of Southern California, B.A., 1952.  
Harvard Law School, J.D., 1955.

**PREDOMINANT BUSINESS AFFILIATION**

**President**, The Times Mirror Company.

**BUSINESS AFFILIATIONS AND OFFICES HELD:**

**PRESENT**

**Director**, Unionamerica, Inc.

**NATIONAL CHAMBER SERVICE:**

**PRESENT**

**Director**, April 29, 1974 to date.

**Member**, Private Pension-Social Security, and Taxation Committees.

**ORGANIZATION AFFILIATIONS AND OFFICES HELD:**

**PRESENT**

**Director and Secretary**, The Times Mirror Foundation.

**Trustee**, Pfaffinger Foundation.

**Member**, American Bar Association; State Bar of California; Los Angeles County Bar Association.

**PAST**

**Director**, American Society of Corporate Secretaries, Inc.

**REMARKS:**

Director: YMCA of Metropolitan Los Angeles; Independent Colleges of Southern California.

Member: Los Angeles Committee on Foreign Relations; Southern California Committee for the Harvard Law School Fund; Board of Visitors, Graduate School of Management, University of California, Los Angeles; California Club; Sigma Delta Chi.



**EVANS, Mark (Austad)**  
**Washington, D.C.**

**BUSINESS ADDRESS**  
5151 Wisconsin Avenue, N.W.  
Zip Code 20016  
Phone 202/244-5151

**HOME ADDRESS**  
Shoreham West Apartments  
2700 Calvert Street, N.W. (20016)  
Phone 202/234-0700

**FAMILY**

Wife's Name, Lola, Children: 3 daughters.

**EDUCATION**

Weber State College.

**PREDOMINANT BUSINESS AFFILIATION**

**Vice President for Public Affairs**, Metromedia, Inc.

**BUSINESS AFFILIATIONS AND OFFICES HELD:**

**Member**, Board of Directors, Julius Garfinckel; Brooks Bros.; Security National Bank; AAA Foundation.

**NATIONAL CHAMBER SERVICE:**

**PRESENT**

**Director**, May 1, 1972 to date.

**Member**, Communications, and Public Affairs Committees.

**PAST**

**Member**, Accrediting Board; Labor Reform Task Force; Powell Memorandum Task Force.

**ORGANIZATION AFFILIATIONS AND OFFICES HELD:**

**PRESENT**

**Chairman**, Washington Board of Trade; Committee on Eisenhower Convention Center; Special Task Force for License Renewal Legislation for U.S. Broadcasting Industry.

**Member**, Washington Convention & Visitors Bureau; Executive Committee, Mayor's Advisory Committee on Eisenhower Convention Center; Board of Directors, Holton-Arms School; Board of Trade; Honor America Committee.

**PAST**

**Chairman**, District of Columbia Bicentennial Commission; Cherry Blossom Festival (2 years); Nixon Inaugural Ball, 1968.

**Vice Chairman**, Nixon Inaugural Ball, 1972.

**Vice President**, National Conference on Citizenship; Washington Area Boy Scout Council.

**Director**, Rotary Club.

**Member**, Board of Directors of National Association of Broadcasters; Advisory Committee for Mrs. L.B. Johnson's Beautification Program; Executive Committee, Peace Corps.

**EVANS, MARK (AUSTAD)**

**REMARKS:**

Member, Church of Jesus Christ of Latter Day Saints.

Latter Day Saints Missionary to Norway.

Member: Burning Tree Club; International Club; Mended Hearts; Capitol Hill Club.

Awards: Two National Freedoms Foundation Awards; Scout of the Year Award, 1970; Lions' Club TriState Humanitarian of the Year Award; District Citizenship Award by Prince George's County; Army Commendation Medal; National Food Brokers Man of the Year Award.

Doctor of Humanities from Weber State College.



**FIDLAR, Marion M.**  
**Salt Lake City, Utah**

**BUSINESS ADDRESSES**

P.O. Box 11368  
Zip Code 84139  
Phone 801/328-8315

**HOME ADDRESS**

1040 Vista View Drive (84108)  
Phone 801/582-8839

**FAMILY**

Wife's Name, Martha T.

**EDUCATION**

DePauw University, Greencastle, Indiana, 1926-1927; Indiana University, Bloomington, Indiana, A.B. with Distinction, 1934; M.A., 1936; Ph.D., 1942.

**PREDOMINANT BUSINESS AFFILIATION**

**Chairman of the Board**, Mountain Fuel Supply Company.

**BUSINESS AFFILIATIONS AND OFFICES HELD:**

**PRESENT**

**Chairman of Board**, Entrada Industries, Inc., Interstate Land Company.

**Director**, Executive Committee, Utah Foundation; First Security Corporation; First Security Bank of Utah, N.A.; Rock Springs National Bank; Utah Manufacturers Association; Rocky Mountain Oil and Gas Association; Utah Council on Economic Education; Salt Lake Area Chamber of Commerce; Salt Lake Area United Way.

**PAST**

**President**, Pro-Utah, Inc.; Salt Lake Area Chamber of Commerce; Pacific Coast Gas Association; Rock Springs (Wyo.) Chamber of Commerce.

**Director**, American Gas Association; Independent Natural Gas Association of America.

**NATIONAL CHAMBER SERVICE:**

**PRESENT**

**Vice President**, April 29, 1974 to date.

**Member**, Budget, Executive, Natural Resources, and Policy Committees; Investment Advisory Council.

**PAST**

**Chairman**, Government Operations & Management Committee.

**Member**, Goals & Priorities, Nominating, and Transportation Committees.

**ORGANIZATION AFFILIATIONS AND OFFICES HELD:**

**PRESENT**

**Director**, St. Mark's Hospital, Salt Lake City.

**Fellow**, Geological Society of America; American Association for the Advancement of Science; American Geographical Society.

## FIDLAR, MARION M.

**Member**, American Association of Petroleum Geologists; American Institute of Professional Geologists; American Institute of Mining, Metallurgical and Petroleum Engineers; Salt Lake City International Airport Advisory Council; Society of Exploration Geophysicists; Newcomen Society in North America; Advisory Council, College of Mines and Mineral Industries, Univ. of Utah.

### PAST

**President**, Rotary Club of Salt Lake City; Rotary Club of Rock Springs (Wyo.); Alta Club.

**Director**, Utah Symphony Board; Utah Heart Association; Alta Club; Utah Safety Council.

**Trustee**, Westminster College, Salt Lake City.

**Member**, Alumni Council, Dept. of Geology, Indiana Univ.

### REMARKS:

Distinguished Alumni Service Award, Indiana University, 1964.

Member: Phi Beta Kappa; Sigma Xi; The Country Club of Salt Lake City; Honorary Colonels Corps of Utah; First Congregational Church; Alta Club; Weber Club.

Who's Who in America; Who's Who in The West; Who's Who in Finance and Industry; American Men of Science.



## FRANTZ, Welby M. Terre Haute, Indiana

**BUSINESS ADDRESS**  
1450 Wabash Avenue  
Zip Code 47808  
Phone 812/232-5321

**HOME ADDRESS**  
250 Kean Lane (47803)  
Phone 812/877-1390

### FAMILY

Wife's Name, Frances C. Children: 1 daughter

### EDUCATION

Atlanta, Illinois Community High School; Illinois State University.

### PREDOMINANT BUSINESS AFFILIATION

**Vice Chairman of the Board**, Eastern Express, Inc.

### BUSINESS AFFILIATIONS AND OFFICES HELD:

#### PRESENT

**Director**, Terre Haute First National Bank; Union Hospital.

**Advisor** to Board of Directors of AAFES.

#### NATIONAL CHAMBER SERVICE:

##### PRESENT

**Director**, April 28, 1969 to date.

**Chairman**, Transportation Committee.

**Member**, Government Operations and Management Committee; Accrediting Board.

##### PAST

**Member**, Policy, Public Affairs, and Transportation and Communications Committees; Postal Policy Advisory Panel.

#### ORGANIZATION AFFILIATIONS AND OFFICES HELD:

##### PRESENT

**Life Governor**, Regular Common Carrier Conference of ATA.

**Chairman Pro-Tem for Life, Board of Trustees**, Eastern Central Motor Carriers.

**Chairman**, ATA Group Trust; Union Hospital Development Council; Finance Committee, Union Hospital; Wabash Valley Council, B.S.A., Finance Committee.

**Vice Chairman**, ATA Foundation.

**Vice Chairman of Trustees**, Indiana State University Foundation.

**Director**, Transportation Association of America; Indiana State Chamber of Commerce.

**Member**, International Platform Association; Board of Associates of Rose-Hulman Institute; Consultative Committee, School of Business, Indiana State University; Advisory Committee, Transportation Center, Northwestern University.

**FRANTZ, WELBY M.**

**PAST**

**Chairman of the Board and Life Member**, National Defense Transportation Association.

**Chairman of the Board**, American Trucking Associations, Inc.; Indiana Motor Truck Association.

**President**, American Trucking Associations, Inc.; Indiana Motor Truck Association; Transportation Club of Terre Haute; Terre Haute Motor Carriers' Association; Terre Haute Chamber of Commerce.

**Vice President**, Indiana State Chamber of Commerce.

**Vice Chairman**, American Trucking Associations Committee of 100.

**Faculty Associate**, Indiana University.

**Director**, Country Club of Terre Haute; National Safety Council; Transportation Association of America; Indiana State Chamber of Commerce.

**Founder Member**, American Society of Traffic and Transportation.

**Member**, Lost Creek Township Metropolitan School Board; Motor Transport Advisory Board; Liberty Mutual Insurance Company of Boston.

**REMARKS:**

U.S. Army, Persian Gulf Command, European Theatre.

Who's Who In America.

Member: Elks; Scottish Rite; Zorah Shrine; Kiwanis; Marco Polo Club; Traffic Club of New York; Terre Haute Transportation Club; Country Club of Terre Haute; Tamarac Country Club, Fort Lauderdale, Florida.

Elder, Westminster Presbyterian Church.



**FULTON, Alfred M., M.D.**  
**Billings, Montana**

**BUSINESS ADDRESS**

Billings Clinic  
Box 2555  
Zip Code 59103  
Phone 406/252-4141

**HOME ADDRESS**

3120 West MacDonald Drive (59102)  
Phone 406/656-5482

**FAMILY**

Wife's Name, Ruth. Children: 1 son, 3 daughters.

**EDUCATION**

Carleton College, B.A., 1936; University of Minnesota Medical School, M.D., 1941.

**PREDOMINANT BUSINESS AFFILIATION**

**Internist**, Billings Clinic.

**BUSINESS AFFILIATIONS AND OFFICES HELD:**

**PAST**

**President**, Montana Medical Association, 1968.

**Director**, Mountain States Regional Medical Program, 1969-70.

**Governor**, American College of Physicians, 1966-1972.

**NATIONAL CHAMBER SERVICE:**

**PRESENT**

**Director**, April 26, 1971 to date.

**Member**, Accrediting Board; Special Committee on the Nation's Health Care Needs; Nominating Committee.

**PAST**

Action Assembly on Trends and Issues, 1967.

**ORGANIZATION AFFILIATIONS AND OFFICES HELD:**

**PRESENT**

**Vice President**, Montana Foundation for Medical Care.

**Member**, American Medical Association; American College of Physicians; American Society of Internal Medicine; Montana Medical Association.

**PAST**

**President**, Billings Chamber of Commerce, 1966.

**REMARKS:**

Flight Surgeon, U.S. Army Air Force, 1942-46.

Diplomate, American Board of Internal Medicine.



**GOLDY, Daniel L.**  
Houston, Texas

**BUSINESS ADDRESS**  
P.O. Box 2589  
Zip Code 77019  
Phone 713/526-5461

**HOME ADDRESS**  
2929 Buffalo Speedway (77006)  
Phone 713/623-0334

**FAMILY**

Wife's Name, Genevieve R. Children: 1 son.

**EDUCATION**

University of Wisconsin, 1936; Graduate Work, University of Chicago, 1936-37.

**PREDOMINANT BUSINESS AFFILIATION**

**President and Director**, International Systems & Controls Corporation.

**BUSINESS AFFILIATIONS AND OFFICES HELD:**

**PRESENT**

**President & Director**, ISC World Trade Corp., Investors Counsel, Inc.; Capital Shares, Inc.

**Director**, J.F. Pritchard and Company; Black, Sivalls & Bryson, Inc.; Mix-Mill, Inc.; Capamerica Fund, Inc.; Capital Investors Growth Fund, Inc.; Lang Engineering, Inc.; Applied Technology Corp.; Otis Elevator Corp.

**PAST**

**General Partner**, Mountain Fir Lumber Co.

**Vice President**, Pacific Northern Lumber Co.

**NATIONAL CHAMBER SERVICE:**

**PRESENT**

**Vice President**, April 29, 1974 to date.

**Chairman**, International Committee.

**Member**, Budget, Executive, and Natural Resources Committees.

**PAST**

**Member**, International Committee; International Environment Panel.

**ORGANIZATION AFFILIATIONS AND OFFICES HELD:**

**PRESENT**

**Member**, Board of Trustees, U.S. Council International Chamber of Commerce; U.S./BIAC Committee on Environment; Executive Committee, Advisory Council on U.S.-Japanese Economic Relations; U.S. Delegate, BIAC, Organization for Economic Cooperation and Development; American Economics Association; National Economists Club of Washington, D.C.

**REMARKS:**

U.S. Navy, Pacific Theatre, World War II; Recipient of the John Lendrum Mitchell Memorial Medal, University of Wisconsin.



**GRAY, John D.**  
Chicago, Illinois

**BUSINESS ADDRESS**  
36 South Franklin Street  
Zip Code 60606  
Phone 312/372-6300

**HOME ADDRESS**  
480 Voltz Road  
Northbrook, Illinois 60062  
Phone 312/446-0430

**FAMILY**

Wife's Name: Ann. Children: 4 sons.

**EDUCATION**

Antioch College, Yellow Springs, Ohio; Loyola University, Chicago, Illinois.

**PREDOMINANT BUSINESS AFFILIATION**

**Chairman**, Hart Schaffner & Marx.

**BUSINESS AFFILIATIONS AND OFFICES HELD:**

**PRESENT**

**Director**, The First National Bank of Chicago; W.T. Grant Company; Sunbeam Corporation; Northwest Industries, Inc.; Hart Schaffner & Marx.

**Trustee**, The Mutual Life Insurance Company of New York.

**NATIONAL CHAMBER SERVICE:**

**PRESENT**

**Director**, April 28, 1969 to date.

**Member**, Natural Resources Committee.

**PAST**

**Member**, Antitrust and Trade Regulation, Domestic Distribution, and Labor Relations Committees.

**ORGANIZATION AFFILIATIONS AND OFFICES HELD:**

**PRESENT**

**Director**, Illinois Manufacturers' Association; Chicago Association of Commerce and Industry; Mid-America Chapter of the American Red Cross; Junior Achievement of Chicago; Better Business Bureau of Metropolitan Chicago; National Junior Achievement.

**Trustee**, Better Government Association; Chicago Orchestral Association; Committee for Economic Development.

**Associate**, Northwestern University.

**Member**, Business Advisory Council, School of Business, Northwestern University.

**PAST**

**Vice Chairman and Member**, Executive Committee of Better Business Bureau of Metropolitan Chicago.

**Chairman**, Illinois Manufacturers' Association.

**President**, Clothing Manufacturers Association of the United States of America; Chicago Association of Commerce and Industry; Illinois Manufacturers' Association.



**GRAY, JOHN D.**

**REMARKS:**

U.S. Army, 1942-1945.

Associated Men's Wear Retailers of New York's "Man of the Year" 1950.

"Good Scout of the Year" in the Men's Wear Industry of New York by Boy Scouts of America, 1954.

Golden Fleece Award, National Association of Wool Manufacturers, 1958; Award of Merit, Lighthouse, New York Association for the Blind, 1965; Man of the Year Award, Young Men's Association of the Men's Apparel Industry, 1968; Ben Goldman Human Relations Award, Chaplain Alexander D. Goode-Ben Goldman Lodge of the B'nai B'rith, 1969; Honorary Doctor Laws degree from Northwestern University in 1972.

Honorary Member, Eta Mu Pi, New York University's School of Retailing.

Member: Mid-Day Club; Mid-America Club; Chicago Curling Club; Pere Marquette Rod and Gun Club; The Commercial Club of Chicago; The Economic Club of Chicago; The Tavern Club of Chicago; The Links; The Chicago Club; Glen View Club; Eldorado Country Club; Old Elm Club of Chicago.



**GROVE, David Lawrence  
Armonk, New York**

**BUSINESS ADDRESS**  
Old Orchard Road  
Zip Code 10504  
Phone 914/765-6205

**HOME ADDRESS**  
5 The Knoll (10504)  
Phone 914/273-8552

**FAMILY**

Wife's Name: C. Lois, Children: 1 daughter.

**EDUCATION**

Harvard: B.A. and Ph.D. in economics, 1952.

**PREDOMINANT BUSINESS AFFILIATION**

**Vice President & Chief Economist**, IBM Corporation.

**BUSINESS AFFILIATIONS AND OFFICES HELD:**

**PRESENT**

**Director**, Aetna Variable Annuity Life Insurance Co.; Data Technology Corporation; HNC Mortgage and Realty Investors.

**Member**, Time Magazine's Board of Economists; Eastern Airlines' Economic Forum.

**NATIONAL CHAMBER SERVICE:**

**PRESENT**

**Vice President**, April 29, 1974 to date.

**Chairman**, Multinational Corporations Panel.

**Member**, Budget, Executive, and International Committees.

**PAST**

**Chairman**, Canada-United States Committee (U.S. Section).

**Member**, Canada-United States Committee (U.S. Section); Special Committee to Consider the Problems of the Dollar; Special Committee on Long Range Tax Policy and Balanced Growth; Balance of Payments Advisory Panel.

**ORGANIZATION AFFILIATIONS AND OFFICES HELD:**

**PRESENT**

**Trustee**, New York Medical College; Committee for Economic Development.

**Director**, Westchester Medical Center Foundation, Inc.; National Bureau of Economic Research.

**Member**, Executive Committee, National Bureau of Economic Research.

**Associate Editor**, Financial Analysts Journal.

**PAST**

Adviser to a number of foreign central banks and governments on financial matters.

**REMARKS:**

Phi Beta Kappa.



**HAGEMAN, Warren C.**  
**San Francisco, California**

**BUSINESS ADDRESS**  
 P. O. Box 3575  
 Zip Code 94119  
 Phone 415/781-7760

**HOME ADDRESS**  
 3400 Springhill Road  
 Lafayette, California 94549  
 Phone 415/284-9230

**FAMILY**

Wife's Name, Betty. Children: 1 son, 2 daughters.

**EDUCATION**

Colorado School of Mines.  
 San Jose State University, B.A., 1948.

**PREDOMINANT BUSINESS AFFILIATION**

**Group Vice President**, U.S. Subsidiaries, Del Monte Corporation.

**Member**, Management Committee.

**BUSINESS AFFILIATIONS AND OFFICES HELD:**

**PRESENT**

**Director**, Distribution Systems Inc., Granny Goose Foods Inc., Subsidiaries of Del Monte Corporation.

**PAST**

**Agricultural and Production Manager, Division Manager**, Mountain States and Midwest Divisions.

**President**, Alaska Packers Association, Inc.

**Vice President**, Eastern Production; Pacific Coast and Alaska Production; U.S. Production, Del Monte Corp.

**NATIONAL CHAMBER SERVICE:**

**PRESENT**

**Director**, November 1969 to date.

**Chairman**, Agribusiness and Rural Affairs Committee.

**Member**, Bylaws, Nominating, Policy, and Transportation Committees.

**PAST**

**Member**, Goals & Priorities, and Labor Relations Committees.

**ORGANIZATION AFFILIATIONS AND OFFICES HELD:**

**PAST**

**Chairman**, Agriculture Committee, National Canners Association.

**Director**, Rocky Mountain Canners Association; Illinois Canners Association.

**Member**, Executive Committee, Canners League of California.

**REMARKS:**

U.S. Army, World War II.

Member, St. Francis Yacht Club.



**HARRIS, George S.**  
**Chicago, Illinois**

**BUSINESS ADDRESS**  
 4455 Dr. Martin Luther King, Jr. Drive  
 Zip Code 60653  
 Phone 312/285-3030

**HOME ADDRESS**  
 9327 South Michigan Avenue (60619)  
 Phone 312/928-6685

**FAMILY**

Wife's Name, Dorothy. Children: 1 daughter.

**EDUCATION**

Wendell Phillips High School.

**PREDOMINANT BUSINESS AFFILIATION**

**Vice Chairman of the Board**, Member of Executive Committee and Investment Committee, Chicago Metropolitan Mutual Assurance Company.

**BUSINESS AFFILIATIONS AND OFFICES HELD:**

**PRESENT**

**Director**, Chicago Bank of Commerce; Tuesday Publications.

**Vice President and Director**, Sivart Corporation.

**Owner**, George S. Harris Real Estate.

**PAST**

**President and Chief Executive Officer**, Chicago Metropolitan Mutual Assurance Company.

**Secretary and Director**, Parkway Amusement Corporation.

**NATIONAL CHAMBER SERVICE:**

**PRESENT**

**Director**, April 27, 1970 to date.

**Member**, Community & Urban Affairs, and Private Pension-Social Security Committees.

**PAST**

**Member**, Education, Education & Manpower Development, Manpower Development, Policy, and Urban and Regional Affairs Committees.

**ORGANIZATION AFFILIATIONS AND OFFICES HELD:**

**PRESENT**

**Director**, Chicago Association of Commerce & Industry; Jane Dent Home.

**Member**, Metropolitan Fair & Exposition Authority (McCormick Place).

**PAST**

**Director**, Episcopal Charities; Cosmopolitan Chamber of Commerce.

**Board Member**, Chicago Plan Commission; Metropolitan Crusade of Mercy; Community Fund; Welfare Council, Greater Chicago.

**HARRIS, GEORGE S.**

**President**, National Association of Real Estate Brokers; Joint Negro Appeal; National Insurance Association; Illinois Board of Higher Education.

**General Secretary**, Chicago Association of Commerce & Industry.

**Member**, President's National Advisory Insurance Panel on Riot-Affected Areas; National Defense Executive Reserve.

**Trustee**, St. Augustine's College.

**REMARKS:**

Honorary Doctor of Hope, City of Hope.

St. Franciscan Award, outstanding leadership in promoting the civic welfare of minority groups.

N.A.A.C.P., Certificate of Merit.

Baptist State Convention of Illinois, exemplary churchman and business executive.

National Insurance Association, outstanding service as president.

Dearborn Real Estate Board, outstanding service as member.

Wabash Y; Century Club, outstanding service to youth.

Member: The Economic Club of Chicago; Olde Tymers (over 50) Club; The Commercial Club of Chicago; The Executives' Club of Chicago; Chicago Assembly.



**HARRIS, Shearon  
Raleigh, North Carolina**

**BUSINESS ADDRESS**

P.O. Box 1551  
Zip Code 27602  
Phone 919/828-8211

**HOME ADDRESS**

2516 Wake Drive (27608)  
Phone 919/787-9538

**FAMILY**

Wife's Name, Helen. Children: 3 daughters.

**EDUCATION**

A.B., Wake Forest University (1936); LL.B., Wake Forest University (1938).

**PREDOMINANT BUSINESS AFFILIATION**

**Chairman/President**, Carolina Power & Light Company.

**BUSINESS AFFILIATIONS AND OFFICES HELD:**

**PRESENT**

**Director**, Wachovia Bank and Trust Company, N.A.; Durham Life Insurance Company.

**PAST**

**Lawyer**, Albemarle, North Carolina, 1939-1957.

**NATIONAL CHAMBER SERVICE:**

**PRESENT**

**Director**, May 1, 1972 to date.

**Member**, Natural Resources, and Policy Committees.

**PAST**

**Member**, Environmental Pollution Panel.

**ORGANIZATION AFFILIATIONS AND OFFICES HELD:**

**PRESENT**

**Chairman**, Executive Advisory Committee, Federal Power Commission.

**Vice Chairman**, Electric Power Research Institute.

**President**, Southeastern Electric Exchange.

**Trustee**, Committee on Economic Development.

**Executive Committee**, The Business Roundtable.

**Director**, Edison Electric Institute; Executive Committee, North Carolina Citizens Association; Research Triangle Foundation of North Carolina; National Association of Manufacturers.

**Member**, The Business Council.

**PAST**

**Chairman**, Edison Electric Institute; National Association of Electric Companies.

**President**, North Carolina Citizens Association; North Carolina Industrial Council; North Carolina Education Council on National Purposes, Inc.

**Principal Clerk**, North Carolina House of Representatives.

## HARRIS, SHEARON

**Member**, North Carolina House of Representatives, representing Stanly County.

### REMARKS:

Deacon and Sunday School teacher, Hayes Barton Baptist Church.

Past Parliamentarian, North Carolina Baptist State Convention.

Chairman, Board of Associates for Meredith College in Raleigh.

Former Trustee, Wake Forest University.

Director, North Carolina Foundation of Church-Related Colleges.

Holder of the Bronze Star and Legion of Merit for service in the European Theatre during World War II.



## HEALY, John E., II Wilmington, Delaware

**BUSINESS ADDRESS**  
707 Tatnall Street  
P.O. Box 2328  
Zip Code 19899  
Phone 302/658-7294

**HOME ADDRESS**  
10 Nenagh Drive, Fairfax Farms (19803)  
Phone 302/658-4406

### FAMILY

Wife's Name, Margaret. Children: 5 sons, 2 daughters.

### EDUCATION

St. Joseph's College Preparatory School; Severn School; University of Delaware, Bachelor of Civil Engineering. 1939.

### PREDOMINANT BUSINESS AFFILIATION

**President**, John E. Healy & Sons, Inc.,  
General Contractors.

### BUSINESS AFFILIATIONS AND OFFICES HELD:

#### PRESENT

**President**, Continental University Services, Inc.; Fox Rest Development Co.

**Director**, Delaware Savings & Loan Association.

**Member**, Delaware Advisory Board; Liberty Mutual Insurance Company.

#### NATIONAL CHAMBER SERVICE:

##### PRESENT

**Director**, May 1, 1972 to date.

**Member**, Construction Action Council Executive Committee; Audit, and Labor Relations Committees.

#### ORGANIZATION AFFILIATIONS AND OFFICES HELD:

##### PRESENT

**Director**, American Arbitration Association; Associated General Contractors of America; Council of Construction Employers.

**Member**, American Society of Civil Engineers; Executive Committee, Associated General Contractors of America.

##### PAST

**Chairman of the Board**, Council of Construction Employers.

**President**, Associated General Contractors of America; Allied Construction Industries of Delaware; Brandywine Hundred Kiwanis Club.

**Senior Vice President**, Associated General Contractors of America.

**Vice President**, Associated General Contractors of America.

**HEALY, JOHN E., II**

**REMARKS:**

Member: St. Mary Magdalen Roman Catholic Church;  
Wilmington Country Club; Knights of Columbus.

Lt. Colonel, U.S. Army.



**HILBURN, Earl D.**  
**Upper Saddle River, New Jersey**

**BUSINESS ADDRESS**

One Lake Street  
Zip Code 07458  
Phone 201/825-1100

**HOME ADDRESS**

P.O. Box J  
Saddle River, N.J. 07458

**FAMILY**

Wife's Name, Charlotte, Children: 2 sons.

**EDUCATION**

University of Wisconsin; Purdue University.

**PREDOMINANT BUSINESS AFFILIATION**

**President and Director**, The Western Union Telegraph Company.

**BUSINESS AFFILIATIONS AND OFFICES HELD:**

**PRESENT**

**Chairman and President**, WUMEX. S.A., Mexico City.

**Chairman**, Western Union of Hawaii, Honolulu.

**Director**, Western Union Services, Inc.; The Gold and Stock Telegraph Company; Empire and Bay States Telegraph Company.

**PAST**

**Director**, Gray Manufacturing Co.; Information Sciences, Inc.

**Vice President and General Manager**, Electronics Division, Curtiss-Wright Corporation.

**President and Director**, Burttek, Inc.

**Vice President**, Link Division, General Precision, Inc.; Westinghouse Air Brake Company.

**NATIONAL CHAMBER SERVICE:**

**PRESENT**

**Director**, April 27, 1970 to date.

**Chairman**, Communications Committee.

**Member**, Canada-United States Committee (U.S. Section).

**PAST**

**Member**, Advisory Panel on Postal Policy, and Transportation and Communications Committee.

**ORGANIZATION AFFILIATIONS AND OFFICES HELD:**

**PRESENT**

**Vice President and Director**, Greater New York Board of Trade.

**Member**, American Management Association; Armed Forces Communications and Electronics Association; IEEE Professional Group on Engineering Management.

## HILBURN, EARL D.

### REMARKS:

Member: U.S. Power Squadron; Tarrytown Boat Club, Tarrytown, New York; International Club; National Aviation Club, and National Space Club, Washington, D.C.; Merchants Club, New York; Jockey Club, Miami, Florida; Union League Club, New York City.



## JONES, Jenkin Lloyd Tulsa, Oklahoma

### BUSINESS ADDRESS

Box 1770  
Zip Code 74102  
Phone 918/582-1101

### HOME ADDRESS

2272 East 38th Street (74105)  
Phone 918/742-3725

### FAMILY

Wife's Name, Juanita C. Children: 2 sons, 1 daughter.

### EDUCATION

Culver Military Academy; The Tome School; University of Wisconsin, Ph.B., 1933.

### PREDOMINANT BUSINESS AFFILIATION

**Editor and Publisher**, The Tulsa Tribune.  
Weekly syndicated column distributed by General Features Corporation, Los Angeles.

### BUSINESS AFFILIATIONS AND OFFICES HELD:

**Director**, Newspaper Printing Corporation of Tulsa; Fourth National Bank of Tulsa.

### NATIONAL CHAMBER SERVICE:

#### PRESENT

**Member**, Senior Council, May 1, 1972 to date.  
**Member**, Business Overview, Budget, and Consumer Affairs, and Executive Committees.

#### PAST

**Director**, September 17, 1965 to May 1, 1967.  
**Vice President**, May 1, 1967 to April 28, 1969.  
**President**, April 28, 1969 to April 27, 1970.  
**Chairman of the Board**, April 27, 1970 to April 26, 1971.  
**Chairman of the Executive Committee**, April 26, 1971 to May 1, 1972.  
**Chairman**, Canada-United States (U.S. Section), and Nominating Committees.  
**Member**, Budget, Bylaws, Canada-United States (U.S. Section), International, and Policy Committees; Council on Trends & Perspective; Foundation Fund; Investment Advisory Council; Foreign Assistance Advisory Panel.

### ORGANIZATION AFFILIATIONS AND OFFICES HELD:

#### PRESENT

**Director**, William Allen White Foundation.  
**Member**, International Press Institute; Inter-American Press Association; American Society of Newspaper Editors.

## JONES, JENKIN LLOYD

### REMARKS:

Certificate of Merit, University of Oklahoma, 1967; Oklahoma Hall of Fame, 1968; Distinguished Service Award, University of Wisconsin, 1970.

Member, Sigma Delta Chi; Phi Gamma Delta; Unitarian Church; Tulsa Club; Southern Hills Country Club, Tulsa; National Press Club.

Lt. Cdr. (Ret.) USNR.



## KAPNICK, Harvey Chicago, Illinois

### BUSINESS ADDRESS

69 West Washington Street  
Zip Code 60602  
Phone 312/346-6262

### HOME ADDRESS

100 Woodley Road  
Winnetka, Illinois 60093  
Phone 312/446-8047

### FAMILY

Wife's Name, Mary. Children: 3 sons.

### EDUCATION

Cleary College, B.S., 1947.

University of Michigan, Graduate School of Business Administration, 1947-48.

### PREDOMINANT BUSINESS AFFILIATION

**Chairman**, Arthur Andersen & Co.

### NATIONAL CHAMBER SERVICE:

#### PRESENT

**Director**, April 30, 1973 to date.

**Member**, Audit Committee.

#### PAST

**Chairman**, Government Operations and Management Committee.

**Member**, Private Pension Plans Committee.

### ORGANIZATION AFFILIATIONS AND OFFICES HELD:

#### PRESENT

**Trustee and Treasurer**, The Orchestral Association (Chicago Symphony Orchestra).

**Director and Treasurer**, Chicago 21 Corporation.

**Director, Trustee, or Governor**, International Executive Service Corps; The Menninger Foundation; Illinois State Chamber of Commerce; Siena Heights College; Chicago Sunday Evening Club; Mid-America Club; Ravinia Festival Association; Museum of Science and Industry.

**Member**, AICPA Council; Duke University Graduate School of Business Administration Board of Visitors; Northwestern University Graduate School of Management Advisory Council; YMCA Advisory Council; Illinois CPA Society; National Association of Accountants; American Accounting Association; Newcomen Society in North America.

#### PAST

**Chairman**, Business & Professional Division, Metropolitan (Chicago) Crusade of Mercy.

**Co-Chairman**, Governor's Task Force on Welfare Audit (State of Illinois).

**Illinois State Crusade Chairman**, American Cancer Society.

## KAPNICK, HARVEY

**Director, President, Vice President,** Cuyahoga Unit, American Cancer Society.

**Trustee, Assistant Treasurer,** Executive Committee, Lake Erie Opera Theatre.

**Trustee, Vice President,** Executive Committee, Society for Crippled Children.

**Trustee, Chairman of Subcommittee,** Citizens League (Cleveland).

**Director, Trustee (Cofounder),** The Cleveland Plan; Northern Ohio Children's Performing Music Foundation, Inc.; National Foundation (Chicago); Chicago Home for Friendless.

### REMARKS:

Honorary Doctor of Science in Business Administration, Cleary College, 1971.

Member: The Chicago Club; University Club of Chicago; The Attic; The Union Club (Cleveland); Indian Hill Club; The Commercial Club of Chicago; Executives' Club of Chicago; The Economic Club of Chicago.



## KATTEL, Richard L. Atlanta, Georgia

### BUSINESS ADDRESS

99 Annex  
Zip Code 30399  
Phone 404/581-3936

### HOME ADDRESS

3554 Tuxedo Park, N.W. (30305)  
Phone 404/237-9624

### FAMILY

Wife's Name, Gay. Children: 2 daughters.

### EDUCATION

Valley Forge Military Academy; Emory University, BBA; Harvard Business School (Program for Management Development).

### PREDOMINANT BUSINESS AFFILIATION

**President and Chief Executive Officer,** The Citizens and Southern National Bank.

### BUSINESS AFFILIATIONS AND OFFICES HELD:

#### PRESENT

**Chairman and Trustee,** Citizens and Southern Realty Investors.

**Director,** Georgia Northern Railway Company; Georgia Power Company; Savannah Foods and Industries; Citizens and Southern Bank of Albany; Magic Chef, Inc.

### NATIONAL CHAMBER SERVICE:

#### PRESENT

**Director,** April 29, 1974 to date.

**Member,** Banking, Monetary & Fiscal Affairs, and Consumer Affairs Committees; Accrediting Board.

### ORGANIZATION AFFILIATIONS AND OFFICES HELD:

#### PRESENT

**Chairman,** Communications Council of American Bankers Association; 1974 United Way Campaign.

**Director,** Georgia State Chamber of Commerce; Atlanta Chamber of Commerce; American Bankers Association.

**Member,** Association of Reserve City Bankers; Regional Advisory Committee for Sixth National Bank Region.

### REMARKS:

Member: Young Presidents Organization; Peachtree Road United Methodist Church.

Trustee and Finance Committee Member of Lovett School.





**LOGAN, John O.  
Des Plaines, Illinois**

**BUSINESS ADDRESS**  
Ten UOP Plaza  
Zip Code 60016  
Phone 312/391-2345

**HOME ADDRESS**  
Route #2, Box 333A, Sutton Road  
Barrington Hills, Illinois 60010  
Phone 312/381-1548

**FAMILY**

Wife's Name, Edna. Children: 2 sons, 1 daughter.

**EDUCATION**

Shurtleff College (Southern Illinois University), B.S.

**PREDOMINANT BUSINESS AFFILIATION**

**President and Chief Executive Officer**, Universal Oil Products Company.

**BUSINESS AFFILIATIONS AND OFFICES HELD:**

**PRESENT**

**Director**, Diamond Crystal Salt Company; NL Industries, Inc.; LaSalle National Bank.

**PAST**

Thirty-five years with Olin Mathieson Chemical Corporation and predecessor Mathieson companies.

**NATIONAL CHAMBER SERVICE:**

**PRESENT**

**Director**, April 29, 1974 to date.

**Member**, Council on Trends & Perspective; International Committee.

**ORGANIZATION AFFILIATIONS AND OFFICES HELD:**

**PRESENT**

**Director**, National 4H Service Committee; Presbyterian Home.

**Trustee**, John Crerar Library.

**PAST**

**Chairman and Director**, Manufacturing Chemists Association.

**President and Director**, Chlorine Institute.

**Director**, Illinois State Chamber of Commerce; Chemical Industries Council — Midwest; Foundation for Human Ecology; National Agricultural Chemicals Association.

**Member**, Technical Association Pulp and Paper Industry; Textile Colorists and Chemists Association; Chemical Market Research Association; Chicago Crime Commission; Chicago Club; Commercial Club; Economics Club (Chicago).

**REMARKS:**

Member: Presbyterian Church; Barrington Hills Country Club; Chemists Club (New York City); Alpha Chi Sigma (Professional); Metropolitan Club (Chicago).



**LOWE, William S.  
Mexico, Missouri**

**BUSINESS ADDRESS**  
604 East Teal Lake Road  
Zip Code 65265  
Phone 314/581-2356

**HOME ADDRESS**  
604 East Teal Lake Road (65265)  
Phone 314/581-2356

**FAMILY**

Wife's Name, Pearl. Children: 3 daughters.

**EDUCATION**

South Dakota State University, B.S.

**PREDOMINANT BUSINESS AFFILIATION**

**Retired Chairman of the Board and Consultant**, A.P. Green Refractories Co.

**BUSINESS AFFILIATIONS AND OFFICES HELD:**

**PRESENT**

**Director**, Norfolk & Western Railway Company; A.B. Chance Company; First National Bank in St. Louis; Commerce Bank of Mexico; United States Gypsum Company; Dereco, Inc.; Falstaff Brewing Corporation; A.P. Green Refractories Co.

**PAST**

**Director**, Union Pin Company; Winsted Hardware & Manufacturing Company; American Transformer Company; Wabash Railroad Company.

**NATIONAL CHAMBER SERVICE:**

**PRESENT**

**Member**, Senior Council, April 29, 1974 to date.

**Chairman**, Nominating Committee.

**Member**, Budget, and Executive Committees; Investment Advisory Council; National Chamber Foundation Board.

**PAST**

**Director**, April 26, 1965 to April 28, 1969.

**Vice President**, April 28, 1969 to May 1, 1972.

**President**, May 1, 1972 to April 30, 1973.

**Chairman of the Board**, April 30, 1973 to April 29, 1974.

**Chairman**, Budget Committee; Advisory Panel on Modernizing Local and State Government.

**Member**, Accrediting Board; Community & Regional Resource Development, Economic Security, Education, Goals & Priorities, and Science and Technology Committees.

**ORGANIZATION AFFILIATIONS AND OFFICES HELD:**

**PRESENT**

**Chairman**, Board of Directors, William Woods College.

**Vice President, Director and Member of Executive Committee**, Missouri Chamber of Commerce.

**LOWE, WILLIAM S.**

**Director**, Missouri Public Expenditure Survey.

**Member**, Presidents Professional Association of American Management Association; American Ceramic Society; Registered Professional Engineer.

**PAST**

**President**, Missouri Chamber of Commerce; The Refractories Institute; Rotary Club and YMCA of Winsted, Connecticut.

**REMARKS:**

Honorary D.E., 1964, South Dakota State University.

Honorary D.E., University of Missouri, Rolla, 1969.

Honorary Doctor of Humanities, William Woods College, 1972.

Honorary Doctor of Engineering, 1973, Bridgeport Engineering Institute.

Member, Sigma Tau Engineering Fraternity.

Recipient, Eminent Engineer — Alpha Chapter of Tau Beta Pi Engineering Fraternity, University of Missouri, 1968.

Religious Heritage of America, Business and Professional Leader of the Year (Manufacturing), 1973.



**MADER, Otis M.**  
**Pittsburgh, Pennsylvania**

**BUSINESS ADDRESS**

Two Allegheny Center  
Zip Code 15212  
Phone 412/553-3875

**HOME ADDRESS**

2451 Maryland Drive (15241)  
Phone 412/833-1403

**FAMILY**

Wife's Name, Anne. Children: 3 sons, 1 daughter.

**EDUCATION**

Ohio State University, Bachelor of Architecture.

**PREDOMINANT BUSINESS AFFILIATION**

**President**, ALCOA Building Industries, Division of Aluminum Company of America.

**Vice President — Corporate Marketing**, Aluminum Company of America.

**BUSINESS AFFILIATIONS AND OFFICES HELD:**

**PRESENT**

**Chairman**, Housing Corporation of America; Executive Committee of Producers' Advisory Board, Joint Center for Urban Studies.

**President**, Alcoa Construction Systems Inc., Subsidiary of Alcoa.

**Director**, Alcoa Properties, Inc., & Alcoa Building Products, Inc., Subsidiaries of Aluminum Co. of America; Producers' Council, Inc.; The Stolle Corp.

**Member**, Building Research Advisory Board; Advisory Committee, Center for Building Technology, National Bureau of Standards.

**NATIONAL CHAMBER SERVICE:**

**PRESENT**

**Director**, April 28, 1969 to date.

**Chairman**, Construction Action Council Executive Committee.

**Member**, Community & Urban Affairs Committee.

**PAST**

**Member**, Construction Affairs Committee; Investment Advisory Council.

**REMARKS:**

Member, Duquesne Club; Valleybrook Country Club; Westminster Presbyterian Church.



**MAGILL, Robert F.**  
**Detroit, Michigan**

**BUSINESS ADDRESS**

13-135 General Motors Building  
 3044 West Grand Boulevard  
 Zip Code 48202  
 Phone 313/556-4671

**HOME ADDRESS**

1234 Willow Lane  
 Birmingham, Michigan 48009  
 Phone 313/644-5840

**FAMILY**

Wife's Name, Aileen. Children: 3 sons, 1 daughter.

**EDUCATION**

Indiana University, B.A.  
 Harvard Law School, LL.B.

**PREDOMINANT BUSINESS AFFILIATION**

**Vice President**, General Motors Corporation.

**BUSINESS AFFILIATIONS AND OFFICES HELD:**

**PAST**

Assistant Tax Legislative Counsel and Assistant Head of the Legal Advisory Staff, U.S. Department of the Treasury.

**NATIONAL CHAMBER SERVICE:**

**PRESENT**

**Director**, April 30, 1973 to date.

**Member**, International, and Policy Committees; Foreign Trade, and Multinational Corporations Panels.

**PAST**

**Member**, Taxation Committee.

**ORGANIZATION AFFILIATIONS AND OFFICES HELD:**

**PRESENT**

**Vice President and Director**, League for the Handicapped.

**Chairman**, Traffic Safety Association of Detroit.

**Director**, Citizens Research Council; Civic Searchlight, Inc.; Detroit Metropolitan Industrial Development Corporation; Michigan State Chamber of Commerce; Greater Detroit Chamber of Commerce; National Association of Manufacturers; National Corporation for Housing Partnerships; Traffic Safety for Michigan.

**Member**, Priorities Committee, United Foundation, Detroit.

**REMARKS:**

Lt. Comdr., Pacific Theater, U.S. Navy, 1942-1945.

Member: The Recess Club; Oakland Hills; Burning Tree; Lawyers Club; International Club.



**MORGAN, Lee L.**  
**Peoria, Illinois**

**BUSINESS ADDRESS**

100 N.E. Adams Street  
 Zip Code 61602  
 Phone 309/675-5311

**HOME ADDRESS**

7510 N. Edgewild Drive (61614)  
 Phone 309/691-7744

**FAMILY**

Wife's Name, Mary.

**EDUCATION**

University of Illinois, B.S., 1941.

**PREDOMINANT BUSINESS AFFILIATION**

**President**, Caterpillar Tractor Co.

**BUSINESS AFFILIATIONS AND OFFICES HELD:**

**PRESENT**

**Director**, Caterpillar Tractor Co. (and various subsidiaries); The First Chicago Corporation (and its subsidiary The First National Bank of Chicago); Commercial National Bank of Peoria; Central Illinois Light Co.; Minnesota Mining & Manufacturing Co.

**PAST**

**Director**, University National Bank of Peoria; Caterpillar Mitsubishi Ltd.

**NATIONAL CHAMBER SERVICE:**

**PRESENT**

**Director**, May 1, 1972 to date.

**Member**, International and Nominating Committees.

**PAST**

**Chairman**, Task Force on Multinational Enterprise.

**Member**, Balance of Payments, Environmental Pollution, Foreign Trade Policy, and Multinational Corporations Panels.

**ORGANIZATION AFFILIATIONS AND OFFICES HELD:**

**PRESENT**

**Chairman**, Monmouth College Senate.

**Director**, Proctor Community Hospital, Peoria, Illinois; University of Illinois Foundation.

**Member**, Society of Automotive Engineers.

**PAST**

**President**, Engine Manufacturers Association.

**Chairman**, Manufacturers Division, American Mining Congress.

**Vice President**, University of Illinois Foundation.

**Director**, American Management Association; Illinois Valley Public Telecommunication Corporation; Latin American Agribusiness Development Corporation S.A., New York; International Road Federation, Washington, D.C.



## MORRISON, Clinton Minneapolis, Minnesota

**BUSINESS ADDRESS**  
120 South Sixth Street  
Zip Code 55402  
Phone 612/370-4666

**HOME ADDRESS**  
2400 Cedar Point Drive  
Wayzata, Minnesota 55391  
Phone 612/473-8011

### EDUCATION

Hotchkiss School; Yale University, B.A.; Harvard University Graduate School of Business Administration, M.B.A.

### PREDOMINANT BUSINESS AFFILIATION

**Vice Chairman of the Board of Directors, and Chairman of the Trust Committee**, First National Bank of Minneapolis.

### BUSINESS AFFILIATIONS AND OFFICES HELD:

**Director**, Munsingwear, Inc.; Durkee-Atwood Company; Great Northern Insurance Company; Title Insurance Company of Minnesota.

### NATIONAL CHAMBER SERVICE:

#### PRESENT

**Vice Chairman of the Board**, April 29, 1974 to date.  
**Chairman**, Investment Advisory Council.  
**Member**, Budget, and Executive Committees; National Chamber Foundation Board.

#### PAST

**Director**, May 2, 1966 to April 29, 1968.  
**Vice President**, April 29, 1968 to April 26, 1971.  
**Director**, April 26, 1971 to April 29, 1974.  
**Vice Chairman**, Urban and Regional Affairs Committee.  
**Chairman**, Community & Urban Affairs, Urban and Regional Affairs Committees; Council on Trends & Perspective; Community Development, NAB-JOBS Advisory Panels.  
**Member**, Community & Regional Resource Development Group, Finance, Foreign Policy, International, Nominating, and Urban and Regional Affairs Committees; Foreign Assistance, and Foreign Trade Policy Advisory Panels.

### ORGANIZATION AFFILIATIONS AND OFFICES HELD:

#### PRESENT

**Trustee and Executive Committee**, Minneapolis Society of Fine Arts.  
**Trustee**, Lakewood Cemetery Association; Minneapolis Foundation.  
**Director**, Ex-officio, Greater Minneapolis Chamber of Commerce.

## MORRISON, CLINTON

**Member**, Corporate Fiduciaries Association of Minnesota; Minneapolis Economic Round Table; President's Advisory Council on Minority Business Enterprise; Twin City Society of Security Analysts; St. Paul-Minneapolis Committee on Foreign Relations.

#### PAST

**Trustee**, Pillsbury Settlement House; St. Barnabas Hospital; Hotchkiss School.

**Chairman**, Mayor's Committee on Transportation.

**Vice Chairman**, Minneapolis Community Chest; American Red Cross.

**Vice President**, Member of Executive Committee, Minneapolis Chamber of Commerce.

#### REMARKS:

Military Service, World War II, Research and Development Branch, Military Planning Division, Office of Quartermaster General.

Government Service, 1953-55, Deputy Regional Director — Far East, Foreign Operations Administration.

Member: Minneapolis Club; Woodhill Country Club; University Club of Chicago; Yale Club of New York; Metropolitan Club, Washington, D.C.



**MOSHOFSKY, William J.**  
**Portland, Oregon**

**BUSINESS ADDRESS**  
900 S.W. Fifth Avenue  
Zip Code 97204  
Phone 503/222-5561

**HOME ADDRESS**  
7680 S.W. Memory Lane (97225)  
Phone 503/292-3150

**FAMILY**

Wife's Name, Margaret (Peggy). Children: 2 sons, 2 daughters.

**EDUCATION**

University of Oregon, B.A., J.D.

**PREDOMINANT BUSINESS AFFILIATION**

**Vice President**, Government Affairs, Transportation & Environment, Georgia-Pacific Corporation.

**BUSINESS AFFILIATIONS AND OFFICES HELD:**

**PRESENT**

**Director and Executive Committee**, National Forest Products Association.

**Corporate Secretary and Executive Committee**, Portland Chamber of Commerce.

**Board Member**, Associated Oregon Industries.

**Director**, Wood Components Company, Inc.

**PAST**

**Board Member**, UBA, Inc.

National Commission on State Workmen's Compensation Laws, July 1971-July 1972.

Governor's Advisory Committee on Vocational Rehabilitation (Oregon).

Associated Oregon Industries, Executive Committee.

**NATIONAL CHAMBER SERVICE:**

**PRESENT**

**Director**, April 29, 1974 to date.

**Member**, Accrediting Board; Public Affairs, and Unemployment & Workmen's Compensation Committees.

**ORGANIZATION AFFILIATIONS AND OFFICES HELD:**

**PRESENT**

**President**, IPAR (Institute for Public Affairs Research, Inc.).

**Director**, United Good Neighbors; Oregon Council on Crime and Delinquency.

**PAST**

**Chairman**, Oregon Council on Crime & Delinquency.

**Vice President**, Community Council.

**Advisory Board**, Oregon State Corrections Division.

**MOSHOFSKY, WILLIAM J.**

**Board Member**, National Council on Crime and Delinquency.

Oregon State Board of Bar Examiners.

**REMARKS:**

Congregational Church.

Member: Multnomah Athletic Club; Arlington Club; Alpha Tau Omega; Phi Beta Kappa (University of Oregon).

Koyl Cup — University of Oregon (outstanding Junior man).

Order of the Coif — Legal Scholastic Honor.

U.S. Infantry — World War II; Judge Advocate General Corps — Korean War.



**MURPHY, J. Kevin**  
**Lake Success, New York**

**BUSINESS ADDRESS**  
 2 Nevada Drive  
 Zip Code 11040  
 Phone 516/488-1000

**HOME ADDRESS**  
 Apt. 15-G  
 50 Sutton Place South  
 New York, New York 10022  
 Phone 212/593-2687

**FAMILY**

Wife's Name, Mary Alice. Children: 1 son, 1 daughter.

**EDUCATION**

Colgate University, B.A., 1947.  
 Fordham University Law School, LL.D., 1950.

**PREDOMINANT BUSINESS AFFILIATION**

**President and Chief Executive Officer**, Purolator Services, Inc.

**BUSINESS AFFILIATIONS AND OFFICES HELD:**

**PRESENT**

**Executive Vice President — Services, and Director** of Purolator, Inc., a New York Stock Exchange listed company.

**Chairman of Board of Directors**, Purolator Courier Corp.; Purolator Courier Ltd.; Purolator Services, S.A.R.L., Paris; Purolator Services, Ltd., London; Purolator Services Ltd. of Dublin, Ireland.

**Director**, Long Island Trust Company, Garden City, New York; American Management Association, New York; Long Island Association, Jericho, New York.

**NATIONAL CHAMBER SERVICE:**

**PRESENT**

**Director**, April 29, 1974 to date.  
**Member**, Labor Relations, and Public Affairs Committees.

**PAST**

**Member**, Communications Committee.

**ORGANIZATION AFFILIATIONS AND OFFICES HELD:**

**PRESENT**

**Member**, New York State Bar Association; Nassau County Bar Association.

**Chairman**, POW/MIA Scholarship Program; International Operations Enterprise Council; Bipartisan Committee for Absentee Voting.

Admitted to practice before U.S. Supreme Court; U.S. Court of Appeals; Federal District Court; New York State Court of Appeals; Interstate Commerce Commission.

**Member**, Council of New York State University at Stony Brook; member New York State Joint Legislative Council on Higher Education.

**MURPHY, J. KEVIN**

**PAST**

**Director and Secretary**, American Cancer Society, Nassau County Division.

**Chairman**, Advisory Committee, Law Enforcement Assistance Administration; Nassau County Crusade for American Cancer Society; 1970 Heart Fund Ticket.

Fund raising for Hofstra Law School; Boy Scouts; Girl Scouts; Mental Health; Nassau Hospital; Red Cross.

**REMARKS:**

St. John the Evangelist Parish, New York City.

Member: Garden City Golf Club; The Greek Club; National Aviation Club; Traffic Club of Chicago; City Midday Club; Congressional Country Club; Georgetown Club; Long Island Association; President's Association.

U.S. Navy 1944-46; Naval Intelligence Reserve Officer, Lt., USNR, Retired.

Active in Republican Party Affairs.



**MURRAY, Thomas F.  
New York, New York**

**BUSINESS ADDRESS**

1285 Avenue of the Americas  
Zip Code 10019  
Phone 212/554-3134

**HOME ADDRESS**

315 Hollywood Avenue  
Tuckahoe, New York 10707  
Phone 914/779-5310

**FAMILY**

Wife's Name, Margaret. Children: 3 sons.

**EDUCATION**

University of Iowa — B.S. in Electrical Engineering, 1932.

**PREDOMINANT BUSINESS AFFILIATION**

**Executive Vice President and Chief Investment Officer,**  
The Equitable Life Assurance Society of the United States.

**BUSINESS AFFILIATIONS AND OFFICES HELD:**

**PRESENT**

**Trustee,** Franklin Savings Bank.

**Chairman and Trustee,** The Equitable Life Mortgage and Realty Investors.

**Director,** Transportation Association of America.

**First Vice President and Trustee,** The Urban Land Institute.

**PAST**

United Light and Power Engineering & Construction Company of Chicago, Columbus, Ohio; also Kansas City, Missouri, Davenport, Iowa and Milwaukee, 1933-1941.

**NATIONAL CHAMBER SERVICE:**

**PRESENT**

**Director,** April 29, 1974 to date.

**Chairman,** Community & Urban Affairs Committee.

**Member,** Environment Committee; Investment Advisory Council.

**ORGANIZATION AFFILIATIONS AND OFFICES HELD:**

**PRESENT**

**Member,** New York Society of Security Analysts; National Association of Real Estate Boards; New York City Public Development Corporation.

**PAST**

**Member,** The Institute of Electrical and Electronics Engineers; Society of Industrial Realtors; Fordham Preparatory School Board (1970-73); Executive Board, Westchester-Putnam Boy Scouts Council; Newcomen Society.

**President,** Hutchinson River Boy Scouts Council, New Rochelle.

**MURRAY, THOMAS F.**

**REMARKS:**

Lt. Colonel, Corps of Engineers — Awarded Legion of Merit (1941-1946).

Member: Economic Club; University Club; Hemisphere Club; Leewood Golf Club (President, Eastchester, New York, 1965-67).



**NEWTON, Wilbert F.**  
**Pittsburgh, Pennsylvania**

**BUSINESS ADDRESS**  
One Gateway Center  
Zip Code 15222  
Phone 412/434-2973

**HOME ADDRESS**  
6 Cliffwood Trail (15235)  
Phone 412/823-6450

**FAMILY**

Wife's Name, Edith (Edie). Children: 3 sons, 1 daughter.

**EDUCATION**

University of California, Berkeley, B.S. Chemistry, 1937.  
Harvard Business School, AMP, 1956.

**PREDOMINANT BUSINESS AFFILIATION**

**Vice President**, Corporate Marketing, PPG Industries, Inc.  
**Member**, Management Committee, PPG Industries, Inc.

**BUSINESS AFFILIATIONS AND OFFICES HELD:**

**PRESENT**

**Owner**, Rancho Sereno, Sheep and Cattle Ranch,  
Western Australia.

**Director**, Silenka bv, The Netherlands; Vernante-  
Pennitalia, Italy.

Various PPG Industries, Inc. foreign marketing sub-  
sidiaries.

Since 1941, various technical and marketing positions with  
PPG Industries, Inc. in Chemicals, Merchandising and  
Glass Divisions.

**NATIONAL CHAMBER SERVICE:**

**PRESENT**

**Director**, April 17, 1970 to date.

**Chairman**, Antitrust & Trade Regulation Committee.

**Member**, Construction Action Council Executive Commit-  
tee, Council on Trends and Perspective, and Action Panel  
of Joint American Chamber of Commerce Executives and  
U.S. Chamber of Commerce on Community Development.

**ORGANIZATION AFFILIATIONS AND OFFICES HELD:**

**PRESENT**

**President**, Board of Trustees, Stony Brook School, Stony  
Brook, New York.

**Trustee**, Beirut University College, Beirut, Lebanon.

**Member**, Chemists Club of New York; American Chemical  
Society; American Marketing Association; Chemical Mar-  
ket Research Association; Society Chemical Industry;  
Executive Board, Art Center College of Design; Regional  
Export Expansion Council, U.S. Department of Commerce;  
Policy Advisory Board, Joint Center for Urban Studies of  
MIT and Harvard University; Advisory Committee of Center  
for Building Technology, National Bureau of Standards;

**NEWTON, WILBERT F.**

Producers' Advisory Committee; Board of Delegates of  
California Alumni Foundation.

**Director and member**, Executive Committee, Health Re-  
search and Services Foundation.

**PAST**

**Member**, Pittsburgh Area Marketing Advisory Committee.

**REMARKS:**

Elder, First Presbyterian Church of Pittsburgh.

Member, Duquesne Club; Rolling Rock Club; Pittsburgh  
Athletic Association.





**PETTY, John R.**  
**New York, New York**

**BUSINESS ADDRESS**  
 One William Street  
 New York, New York 10004  
 Phone 212/269-3700

**HOME ADDRESS**  
 37 West Lenox Street  
 Chevy Chase, Maryland 20015  
 Phone 301/654-1813

**FAMILY**

Wife's Name, Lee Mills. Children: 3 sons, 1 daughter.

**EDUCATION**

Francis W. Parker School, Chicago, 1936-1947.  
 Brown University, Providence, Rhode Island, 1947-1951.  
 New York University, Night Law School, 1953-54.

**PREDOMINANT BUSINESS AFFILIATION**

**Partner**, Lehman Brothers Incorporated.

**BUSINESS AFFILIATIONS AND OFFICES HELD:**

**PRESENT**

**Director**, RCA; NBC; Hercules Incorporated.

**PAST**

Deputy Assistant Secretary than Assistant Secretary of the Treasury for International Affairs, 1966-1972.

**Vice President**, Chase Manhattan Bank, 1953-1966.

**NATIONAL CHAMBER SERVICE:**

**PRESENT**

**Director**, April 30, 1973 to date.

**Chairman**, Canada-United States Committee (U.S. Section).

**Member**, International Committee.

**PAST**

**Member**, Canada-United States Committee (U.S. Section).

**ORGANIZATION AFFILIATIONS AND OFFICES HELD:**

**PRESENT**

Foreign Bankholders Protective Council.

Council on Foreign Relations, Inc.

**REMARKS:**

Lt. (jg), Destroyers, Pacific Fleet, 1951-1953.

Treasury Department Exceptional Service Award, December 4, 1968.

Arthur S. Flemming Award, "One of the Ten Outstanding Young Men in the Federal Service, 1968," February 13, 1969.



**PIERSON, John T., Jr.**  
**Kansas City, Missouri**

**BUSINESS ADDRESS**  
 7400 East 12th Street  
 Zip Code 64126  
 Phone 816/483-7400

**HOME ADDRESS**  
 6613 Wenonga Road  
 Shawnee Mission, Kansas 66208  
 Phone 913/262-1376

**FAMILY**

Wife's Name, Barbara Ann. Children: 3 daughters.

**EDUCATION**

Princeton University, Magna Cum Laude, Engineering, 1953; Harvard Graduate School of Business Administration, 1958 M.B.A.

**PREDOMINANT BUSINESS AFFILIATION**

**President and Chief Executive Officer**, The Vendo Company.

**BUSINESS AFFILIATIONS AND OFFICES HELD:**

**PRESENT**

**Director**, The Vendo Company; Ven Par Vending Equipment (Canada); Vendo International, Inc.; Vendo (Australia) Pty. Ltd.; Coldflo, Pty. Ltd. (So. Africa); Vendo de Mexico.

**Chairman of the Board**, Vendo International S.A. (Belgium); Vendo Benelux S.A. (Belgium); Vendo Italy; Vendo Iberia (Spain).

**PAST**

**President**, Vendo International.

**Executive Vice-President and Chief Operating Officer**, The Vendo Company.

**Vice President**, Sales Equipment; New Products for Coca-Cola.

**New Products Manager**, Coca-Cola.

**Salesman**, General Merchandiser Sales Equipment.

**NATIONAL CHAMBER SERVICE:**

**PRESENT**

**Director**, May 1, 1972 to date.

**Member**, Audit, Government Operations & Management, and Public Affairs Committees.

**PAST**

**Member**, Community & Urban Affairs, Goals & Priorities, and International Committees.

**ORGANIZATION AFFILIATIONS AND OFFICES HELD:**

**PRESENT**

**Trustee**, Midwest Research Institute; Barstow School.

**Director**, Leawood National Bank; Boy Scouts of America, K.C. Council.

**PIERSON, JOHN T., JR.**

**Member**, Young Presidents' Organization, K.C. Chapter;  
Civic Council of Kansas City.

**PAST**

**Vice President**, Kansas City Chamber of Commerce,  
International Committee, 1970-1971.

**Trustee**, Pembroke Country Day School.

**Member**, Highlawn School Board; Kansas City Youth  
Symphony Board; Kansas City Chamber of Commerce.

**REMARKS:**

Member: Second United Presbyterian Church; River Club;  
Mission Hills Country Club.

Lieutenant, Naval Intelligence, 1953-1956.



**PURYEAR, Richard A., Jr.**  
**Birmingham, Alabama**

**BUSINESS ADDRESS**

1918 First Avenue North  
Zip Code 35295  
Phone 205/323-4611

**HOME ADDRESS**

4339 Wilderness Court (35213)  
Phone 205/871-9287

**FAMILY**

Wife's Name, Beverly. Children: 2 daughters.

**EDUCATION**

Auburn University; Columbia University Executive Program  
in Business Administration (Fifth Session — 1954).

**PREDOMINANT BUSINESS AFFILIATION**

**Chairman, Director and Chief Executive Officer**,  
Alabama Gas Corporation.

**BUSINESS AFFILIATIONS AND OFFICES HELD:**

Entire business career has been with Alabama Gas Corpo-  
ration.

**NATIONAL CHAMBER SERVICE:**

**PRESENT**

**Director**, October 28, 1969 to date.

**Chairman**, Policy Committee.

**Member**, Bylaws, Natural Resources, Nominating, and  
Private Pensions-Social Security Committees.

**PAST**

**Member**, Goals & Priorities, and Private Pension Plans  
Committees; Marine Resources Panel.

**ORGANIZATION AFFILIATIONS AND OFFICES HELD:**

**PRESENT**

**President**, Warrior-Tombigbee Development Association.

**Vice President**, Alabama State Chamber of Commerce.

**Director**, Birmingham Trust National Bank; Associated  
Industries of Alabama; Southern Research Institute.

**Member**, Birmingham Downtown Improvement Associa-  
tion; Birmingham Committee of 100; Birmingham Commit-  
tee on Foreign Relations; The Newcomen Society of North  
America; Southern Gas Association Executive Committee.

**PAST**

**Chairman**, Birmingham Area Chamber of Commerce;  
Warrior-Tombigbee Development Association.

**President**, Southern Gas Association; Birmingham Area  
Chamber of Commerce.

**Trustee**, Institute of Gas Technology.

**Director**, American Gas Association; Birmingham Met-  
ropolitan YMCA; Birmingham Urban League; Jefferson  
County Community Chest.

**PURYEAR, RICHARD A., JR.**

**REMARKS:**

Member: Monday Morning Quarterback Club; Rotary Club of Birmingham; The American Institute of Architects (Honorary Associate); Auburn University Alumni Association; Kappa Alpha Fraternity Alumni Association; Birmingham Country Club; The Relay House; The Club; The Downtown Club; Pensacola Yacht Club; Mountain Brook Baptist Church.



**RASBERRY, William C.**  
**Shreveport, Louisiana**

**BUSINESS ADDRESS**  
Post Office Box 1764  
Zip Code 71102  
Phone 318/861-3544

**HOME ADDRESS**  
820 Slattery Boulevard (71102)  
Phone: 318/868-7229

**FAMILY**

Wife's Name, Helen Robinson. Children: 1 son, 1 daughter.

**EDUCATION**

Southwestern (B.S.); Memphis; Mississippi State; Vanderbilt.

**PREDOMINANT BUSINESS AFFILIATION**

Timberlands and Investments.

**BUSINESS AFFILIATIONS AND OFFICES HELD:**

**PRESENT**

**Owner**, Crestview Woods.

**President**, Westport Development, Inc.; Forest Park Cemeteries, Inc.; Brookwood Corporation.

**Chairman of the Board**, First National Bank in Niceville, Florida; Greenville Enterprises, S.C.

**Director**, Commercial National Bank, Shreveport, Louisiana; First Bank, Crestview, Florida.

**Partner**, Rasberry & Crow, Timberlands; Rasberry & Rasberry, Investments; Caddo-Bossier Cable T.V.

**PAST**

**President**, Shreveport Horse and Mule Company.

**Treasurer and Secretary**, Shreveport Packing Company.

**Manager and Operator**, Frank Wholesale Grocery and Produce Co.

**NATIONAL CHAMBER SERVICE:**

**PRESENT**

**Director**, April 26, 1971 to date.

**Member**, Agribusiness & Rural Affairs, Bylaws, Natural Resources, and Policy Committees.

**ORGANIZATION AFFILIATIONS AND OFFICES HELD:**

**PRESENT**

**Director**, Southwestern University at Memphis, Tennessee; Evergreen Vocational School.

Florida Council of 100 — (out of state member).

**PAST**

**Vice Chairman**, Louisiana Expressway Authority.

**President and Director**, Senior Council, Shreveport Chamber of Commerce; National Association of Cemeteries.

## RASBERRY, WILLIAM C.

**President**, Caddo Parish School Board; Norwela Council Boy Scouts of America; Louisiana State Fair; Community Action Program Caddo and Bossier Parishes (O.E.O. — Poverty Program); Committee of 100, Shreveport, Louisiana.

### REMARKS:

"Mr. Shreveport" in 1969.

Brotherhood Citation 1969, National Conference of Christians and Jews.

King of Holiday in Dixie (Ark.-La.-Tex. Spring Festival) 1961.

Elder and Chairman, Church Building Committee — First Presbyterian Church.

U.S. Navy, World War II.

Commander, Lowe McFarlane Post No. 14, American Legion.



## RICHEY, Herbert S. Cleveland, Ohio

**BUSINESS ADDRESS**  
700 Westgate Tower  
Zip Code 44116  
Phone 216/333-4000

**HOME ADDRESS**  
1500 Cleveland-Massillon Road  
Bath, Ohio 44210  
Phone 216/666-9226

### FAMILY

Wife's Name, Martha. Children: 1 son, 1 daughter.

### EDUCATION

Augusta Military Academy; Case Institute; University of Michigan (B.S. Engineering).

### PREDOMINANT BUSINESS AFFILIATION

**President and Chief Executive Officer**, The Valley Camp Coal Company.

### BUSINESS AFFILIATIONS AND OFFICES HELD:

#### PRESENT

**Director and Member of Executive Committee**, The Valley Camp Coal Company; Union Savings Association; Union Financial Corporation.

**Director**, Oglebay Norton Company; Bituminous Coal Operators' Association; Ohio Valley Coal Operators Association; National Coal Association.

#### PAST

**Chairman**, National Coal Association, 1971-72, Member Executive and Investment Committees.

### NATIONAL CHAMBER SERVICE:

#### PRESENT

**Vice President**, April 30, 1973 to date.

**Chairman**, Natural Resources Committee.

**Member**, Budget, Environment, and Executive Committees.

#### PAST

**Director**, April 19, 1968 to April 30, 1973.

**Chairman**, Environmental Pollution Advisory Panel.

**Member**, Accrediting Board; Bylaws, Canada-United States (U.S. Section), Natural Resources, and Nominating Committees; Environmental Pollution Advisory Panel.

### ORGANIZATION AFFILIATIONS AND OFFICES HELD:

#### PRESENT

**Trustee**, Center for Human Services, Cleveland.

#### PAST

**Vice Chairman**, Sub-Council for Coal, NIPCC.

**Member**, National Industrial Pollution Control Council.

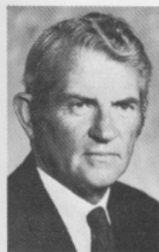
**RICHEY, HERBERT S.**

**REMARKS:**

Member: Union Club (Cleveland); Duquesne Club (Pittsburgh); Seaview Country Club (Absecon, N.J.); Rockwell Springs Trout Club (Sandusky, Ohio).

Former Vestryman, St. Barnabas' Episcopal Church.

Lieutenant, U.S. Navy, July 1943-April 1946.



**RUST, Edward B.**  
**Bloomington, Illinois**

**BUSINESS ADDRESS**  
One State Farm Plaza  
Zip Code 61701  
Phone 309/662-2311

**HOME ADDRESS**  
R.R. 1 (61701)  
Phone 309/662-3146

**FAMILY**

Wife's Name, Harriett. Children: 1 son, 2 daughters.

**EDUCATION**

Stanford University, A.B.

**PREDOMINANT BUSINESS AFFILIATION**

**President and Chief Executive**, State Farm Insurance Companies.

**BUSINESS AFFILIATIONS AND OFFICES HELD:**

**PRESENT**

**Director**, General Telephone Company of Illinois.

**PAST**

Since 1941 various executive positions with State Farm companies.

**NATIONAL CHAMBER SERVICE:**

**PRESENT**

**Chairman of the Executive Committee**, April 29, 1974 to date.

**Member**, Budget, Consumer Affairs, and Taxation Committees; Investment Advisory Council.

**PAST**

**Director**, May 2, 1966 to May 1, 1972.

**Treasurer**, May 1, 1972 to April 30, 1973.

**President**, April 30, 1973 to April 29, 1974.

**Chairman**, Insurance, Membership, and Unemployment Compensation Committees.

**Member**, Accrediting Board; Fiscal Policy, Goals & Priorities, Insurance, Nominating, and Taxation Committees; Ad Hoc Committee on Encouraging Private Sector Involvement in Public Problems.

**ORGANIZATION AFFILIATIONS AND OFFICES HELD:**

**Trustee**, American Institute for Property and Liability Underwriters, Inc.

**Member**, Board of Governors, International Invitational Insurance Seminars; Insurance Institute of America; President's Advisory Council on Minority Enterprise; Riot Insurance Advisory Board of Department of Housing & Urban Development; Department of Commerce, National Business Council for Consumer Affairs.

**Trustee**, Illinois Wesleyan University.

**RUST, EDWARD B.**

**REMARKS:**

Phi Beta Kappa.

U.S. Navy, 1943-46.



**SCOTT, Tom B., Jr.  
Jackson, Mississippi**

**BUSINESS ADDRESS**

Post Office Box 1818  
Zip Code 39205  
Phone 601/948-8700

**HOME ADDRESS**

2502 Eastover Drive (39211)  
Phone 601/362-3444

**FAMILY**

Wife's Name, Laura Elizabeth (Betty) Hewes.

Children: 2 sons, 2 daughters.

**EDUCATION**

Millsaps College, 1940-42, B.A. Degree; University of Mississippi, LLB Degree, 1948.

**PREDOMINANT BUSINESS AFFILIATION**

**President and Chief Executive Officer**, UNIFIRST Federal Savings & Loan Association.

**BUSINESS AFFILIATIONS AND OFFICES HELD:**

**PRESENT**

**Partner**, Scott, Barbour & Scott.

**Director**, Deposit Guaranty National Bank; Standard Life Insurance Company; Intersystems, Inc.

**Trustee**, Savings and Loan Foundation, Inc.

**Member**, Executive Committee, Intersystems, Inc.

**Member**, Board of Directors, Executive Committee & Legislative Committee Chairman, United States Savings and Loan League.

**Member**, International Union of Building Societies & Savings Associations.

**PAST**

**Asst. Clerk**, Mississippi House of Representatives.

**President, Vice President**, Attorney's Committee, Nominating Committee, Association Needs Committee — United States Savings & Loan League.

**Member**, Executive Committee, Mississippi Savings & Loan League.

**NATIONAL CHAMBER SERVICE:**

**PRESENT**

**Director**, April 30, 1973 to date.

**Member**, Banking, Monetary & Fiscal Affairs, and Education & Manpower Development Committees.

**ORGANIZATION AFFILIATIONS AND OFFICES HELD:**

**PRESENT**

**President**, Ole Mississippi Alumni Association.

**Director**, Mississippi Economic Council; Millsaps College Trustees; All Saints Episcopal School; Student Loan Marketing Association (Appointed by President Nixon, January 1973); Mississippi Art Association.

**SCOTT, TOM B., JR.**

**Member**, American Bar Association; American Judicature Society; Mississippi Bar Association; Mississippi Bar Foundation.

**PAST**

**Chairman of the Board**, St. Andrew's Episcopal School.

**President**, Jackson Chamber of Commerce; Jackson Symphony Orchestra; Jackson Kiwanis Club; Community Service Association.

**Treasurer**, Mississippi Arts Festival Foundation, Inc.; All Saints Episcopal School.

**Director**, Jackson Music Association; Boy Scouts of America, Andrew Jackson Council; YMCA; Boy's Club of Jackson; United Givers Fund; City Zoning Board.

**Vestry**, St. Andrew's Cathedral.

**Director & Member of Executive Committee**, Jackson Chamber of Commerce.

**Treasurer & Chairman of Finance Committee**, Jackson Chamber of Commerce.

**REMARKS:**

Member: St. Andrew's Episcopal Cathedral Church; Country Club of Jackson; River Hills Club; Capital City-Petroleum Club; The Hundred Club of Jackson; Newcomen Society in North America; Kappa Alpha Order (President, University of Mississippi).

Who's Who in America. Millsaps Associates. University of Mississippi Alumni Association (Alumni Executive Committee).

World War II — Army Air Force Captain — Oak Leaf Clusters (3).



**SHORT, Harold H.  
Boulder, Colorado**

**BUSINESS ADDRESS**  
Post Office Box 229  
Zip Code 80302  
Phone 303/444-2151

**HOME ADDRESS**  
1001 8th Street (80302)  
Phone 303/442-0138

**FAMILY**

Wife's Name, Elizabeth H. Children: 1 son, 2 daughters.

**EDUCATION**

Colorado State University, B.S. Civil Engineering, 1940.

**PREDOMINANT BUSINESS AFFILIATION**

**Chairman of the Board**, Flatiron Companies.

**BUSINESS AFFILIATIONS AND OFFICES HELD:**

**PRESENT**

**Chairman of the Board**, Flatiron Materials Co., Fort Collins, Colorado; Flatiron Paving Co., Boulder; Flatiron Paving Co., Greeley; Arapahoe National Bank, Boulder.

**President**, Flatiron Pre-Mix Concrete Co.; Flatiron Sand and Gravel Co.; Flatiron Service Co.; Plains Aggregate Co.; Flatiron Structures Co., Boulder; F&F Concrete Construction Co., Fort Collins.

**Partner**, Short & Milne.

**Director**, Affiliated Bankshares of Colorado; Autometrics Co., Boulder; Conrock Co., Los Angeles, Calif.

**NATIONAL CHAMBER SERVICE:**

**PRESENT**

**Director**, June 15, 1973 to date.

**Chairman**, Environment Committee.

**Member**, Accrediting Board; Natural Resources Committee.

**PAST**

**Member**, Construction Action Council Executive Committee.

**ORGANIZATION AFFILIATIONS AND OFFICES HELD:**

**PRESENT**

**2nd Vice President**, National Ready Mixed Concrete Association (1974).

**Director & Member of Executive Committee**, National Ready Mixed Concrete Association (1966 to date).

**Director**, Mountain States Employers Council (1968 to date).

**PAST**

**President & Director**, Colorado Contractors Association; Boulder Chamber of Commerce.

**Director**, Colorado Ready Mixed Concrete Association; Colorado Sand and Gravel Producers Association.

**SHORT, HAROLD H.**

**REMARKS:**

St. Aidans Episcopal Church; Phi Kappa Tau fraternity; Rotary Club of Boulder, President 1971-72.

Field Artillery Officer, World War II, 1941 to 46, completed with rank of Lt. Colonel.

Named "Contractor of the Year" (1972) by Colorado Contractors Association.

Presented Honor Alumnus Award (1972) by Colorado State University.



**SHUMWAY, F. Ritter  
Rochester, New York**

**BUSINESS ADDRESS**

1100 Midtown Tower  
Zip Code 14604  
Phone 716/546-4044

**HOME ADDRESS**

375 Ambassador Drive (14610)  
Phone 716/381-1211

**FAMILY**

Wife's Name, Hettie. Children: 2 sons, 1 daughter.

**EDUCATION**

Princeton University, A.B.; University College, Oxford University, M.A.

**PREDOMINANT BUSINESS AFFILIATION**

**Honorary Chairman of the Board and Member of Executive and Audit Committees**, Sybron Corporation.

**BUSINESS AFFILIATIONS AND OFFICES HELD:**

**Chairman**, Gananda Development Corporation.

**Director**, Security Trust Company; The Lehman Corporation.

**NATIONAL CHAMBER SERVICE:**

**PRESENT**

**Member**, Senior Council, May 1, 1973 to date.

**Member**, Budget, Bylaws, Community & Urban Affairs, Environment, Executive, Natural Resources, and Nominating Committees.

**Member**, Board of Directors, National Chamber Foundation.

**PAST**

**Director**, April 30, 1963 to May 1, 1967.

**Vice President**, May 1, 1967 to April 27, 1970.

**President**, April 27, 1970 to April 26, 1971.

**Chairman of the Board**, April 26, 1971 to May 1, 1972.

**Chairman of the Executive Committee**, May 1, 1972 to April 30, 1973.

**Chairman**, Council on Trends and Perspective; Foreign Operations Review Advisory Panel.

**Member**, Community & Urban Affairs, Economic Policy, Economic Security, International, Labor Relations, Policy, and Urban Affairs Committees; Accrediting Board; Foundation Fund; Special Committee on the Nation's Health Care Needs; Environmental Pollution, and Multinational Corporations Panels; and Powell Memorandum Task Force.

**ORGANIZATION AFFILIATIONS AND OFFICES HELD:**

**PRESENT**

**Director**, Rochester Hospital Fund; Empire State Chamber of Commerce; Project Hope; Rochester Boys' Club; Rochester Community Foundation.



## SHUMWAY, F. RITTER

**First Vice Chairman of the Board**, Rochester Institute of Technology.

**Trustee**, Rochester Center for Government and Community Research, Inc.; Rochester Community Chest; Rochester Chamber of Commerce; American Fund for Dental Education; National Fund for Medical Education; USA-Business & Industry Advisory Committee; Rochester Business Opportunities Corporation; Center for Strategic & International Studies, Georgetown University, Washington, D.C.; Boating Safety Advisory Council of U.S. Coast Guard.

**Executive Committee**, U.S. Figure Skating Association.

**Chairman**, Dance Committee, U.S. Figure Skating Association; U.S.F.S.A. Memorial Fund; Flag & Etiquette Committee of U.S. Power Squadrons.

**Governing Board & Finance Committee**, U.S. Power Squadrons.

**Director**, Great Lakes Cruising Club.

### PAST

**President and Chairman of the Board**, Empire State Chamber of Commerce.

**President**, Genesee Figure Skating Club; American Dental Trade Association; Rochester Chamber of Commerce; Rochester YMCA; Family Service of Rochester; Rochester Rehabilitation Center; U.S. Figure Skating Association.

**Chief Commander**, U.S. Power Squadrons.

**Commander**, Rochester Power Squadron.

**Member**, Board of Directors, National Association of Manufacturers.

### REMARKS:

Member: Great Lakes Cruising Club; Rochester Yacht Club; Genesee Figure Skating Club; The Country Club of Rochester, Genesee Valley Club; Skating Club of New York; Phila. Skating Club and Humane Society.

Recipient, with Mrs. Shumway, of the 1967 Civic Award of the Rochester Rotary Club; Recipient, Business Leader of America Award by Religious Heritage of America, 1972.

Honorary Member: American Dental Association; Chicago Dental Society; Rochester Dental Society.

Honorary Doctor of Laws, Roberts Wesleyan College.



## SIMMONS, William P. Macon, Georgia

**BUSINESS ADDRESS**  
P.O. Box 4248  
Zip Code 31208  
Phone 912/742-3161

**HOME ADDRESS**  
2694 Stanislaus Circle (31204)  
Phone 912/745-3035

### FAMILY

Wife's Name, Betty Sweet Smith. Children: 2 sons,  
1 daughter.

### EDUCATION

Duke University, A.B. 1937.

### PREDOMINANT BUSINESS AFFILIATION

**Chairman and President**, First National Bank and Trust Company.

### BUSINESS AFFILIATIONS AND OFFICES HELD:

#### PRESENT

**Chairman**, Southern Crate & Veneer Company.

**Vice President**, Elberta Crate & Box Company.

**Partner**, Simmons Company.

**Director**, Trust Company of Georgia Associates; Trust Company of Georgia; Georgia Southern & Florida Railroad Company.

#### NATIONAL CHAMBER SERVICE:

##### PRESENT

**Director**, April 28, 1969 to date.

**Chairman**, Unemployment and Workmen's Compensation Committee.

**Member**, Accrediting Board; Banking, Monetary & Fiscal Affairs, Natural Resources, and Policy Committees.

##### PAST

**Chairman**, Workmen's Compensation Panel.

**Member**, Agriculture, Agribusiness and Rural Affairs, Environment, and Labor Relations Committees; Environmental Pollution Panel.

#### ORGANIZATION AFFILIATIONS AND OFFICES HELD:

##### PRESENT

**Trustee**, Emory University; Wesleyan College; Committee for Economic Development; Walter F. George Law School Foundation.

##### PAST

**Chairman**, Georgia State Advisory Committee on Education.

**President**, Greater Macon Chamber of Commerce; Central Georgia Council, Boy Scouts of America; Idle Hour Golf and Country Club; Macon Council on World Affairs.

**SIMMONS, WILLIAM P.**

**Governor, District 692**, Rotary International.

**Treasurer**, Bibb County Board of Education.

**Member**, Governor's Commission for Efficiency and Improvement in Government.



**SMITH, Charles H., Jr.**  
**Cleveland, Ohio**

**BUSINESS ADDRESS**  
970 East 64th Street  
Zip Code 44103  
Phone 216/881-8600

**HOME ADDRESS**  
22500 McCauley Road  
Shaker Heights, Ohio 44122  
Phone 216/464-0072

**FAMILY**

Wife's Name, Rhea. Children: 2 sons, 1 daughter.

**EDUCATION**

Massachusetts Institute of Technology, B.S.

**PREDOMINANT BUSINESS AFFILIATION**

**Chairman of the Board**, SIFCO Industries, Inc.

**BUSINESS AFFILIATIONS AND OFFICES HELD:**

**PRESENT**

**Chairman of the Board**, Custom Tool and Manufacturing Company, Minneapolis; Formmet Corporation, Avon, Ohio.

**Director**, Sifco do Brasil, Sao Paulo, Brazil; Bharat Forge Company, Ltd., Poona, India; ALKOH-SIFCO Co. Ltd., Tokyo, Japan.

**PAST**

**President**, Canadian Steel Improvement, Ltd., Etobicoke, Ontario.

**Director**, Industrias Kaiser, Argentina, Buenos Aires, Argentina; Metachemical Processes, Ltd., Crawley, England.

**NATIONAL CHAMBER SERVICE:**

**PRESENT**

**Chairman of the Board of Directors**, April 29, 1974 to date.

**Member**, Budget, and Executive Committees.

**PAST**

**Director**, May 1, 1967 to April 27, 1970.

**Vice President**, April 27, 1970 to April 30, 1973.

**Treasurer**, April 30, 1973 to April 29, 1974.

**Chairman**, Labor Relations, and Unemployment Compensation Committees; ILO Council; Wage-Price Controls Ad Hoc Committee.

**Member**, Accrediting Board; Bylaws, International, and Labor Relations Committees; ILO Advisory Council; International Development Panel; Council on Trends and Perspective; Labor Reform Task Force; Task Force on Economic Growth and Opportunity; Japan-U.S. Businessmen's Conference, 1970.

**SMITH, CHARLES H., JR.**

**ORGANIZATION AFFILIATIONS AND OFFICES HELD:**

**PRESENT**

- Director**, Ohio Manufacturers Association.
- Vice Chairman**, Salvation Army of Cleveland.
- Trustee**, YMCA of Cleveland; Defiance College; Booth Memorial Hospital.
- Chairman**, International Advisory Committee to the Center for International Management Studies (YMCA).
- Member**, Japan-U.S. Economic Advisory Council to the State Department.

**PAST**

- President**, The Shaker Heights Country Club (1969-1971).
- President**, Forging Industry Association; Forging Industry Education and Research Foundation.

**REMARKS:**

- "One of America's Ten Outstanding Young Men," 1955.
- Former President, Board of Trustees, Plymouth Church.



**SONNEMANN, Roger C.**  
**New York, New York**

**BUSINESS ADDRESS**

1270 Avenue of the Americas  
Zip Code 10020  
Phone 212/757-9700

**HOME ADDRESS**

5 Deerfield Road  
Chappaqua, New York 10504  
Phone 914/238-8294

**FAMILY**

Wife's Name, Helen. Children: 1 son, 1 daughter.

**EDUCATION**

Assoc. Arts (Chemistry), Blackburn College, 1938; B.S. Chem. Eng., University of Illinois, 1940; Juris Doctor, Boston College Law School, 1948.

**PREDOMINANT BUSINESS AFFILIATION**

**Vice President**, Administration and Employee Relations, American Metal Climax, Inc.

**BUSINESS AFFILIATIONS AND OFFICES HELD:**

**PRESENT**

- Vice President & Director**, American Metal Climax Foundation.
- Director**, Radiation Technology Inc.; Hawaii Pacific Growth Fund.

**PAST**

- President**, American Metal Climax Foundation.
- Vice President**, Employee and Public Relations, Hooker Chemical Corp.
- Director of Personnel**, McDonnell-Douglas Corp.
- Divisional Director**, Industrial Relations, Monsanto Co.

**NATIONAL CHAMBER SERVICE:**

**PRESENT**

- Director**, May 1, 1972 to date.
- Chairman**, Special Committee on the Nation's Health Care Needs; ILO Council.
- Member**, Labor Relations Committee.

**PAST**

- Member**, Ad Hoc Committee on Wage-Price Controls; Labor Reform Task Force; Ad Hoc Committee on Economic Stabilization.

**ORGANIZATION AFFILIATIONS AND OFFICES HELD:**

**PRESENT**

- Vice Chairman**, NYC Chapter, National Foundation of March of Dimes.
- Director**, Labor Policy Association; New York Board of Trade; Hemisphere Club.
- Member**, Labor-Management Committee, Business Roundtable; New York Industrial Relations Association.

**SONNEMANN, ROGER C.**

**PAST**

**Member**, Board of Directors, American Society for Personnel Administration.

**Chairman**, Government Affairs Committee, American Society for Personnel Administration.

**REMARKS:**

President, Blackburn Club of Greater New York.

Member: First Congregational Church, Chappaqua, New York; Phi Kappa Sigma Fraternity.

Awards, Honorary LL.D. degree, Blackburn College, 1968.

Past Chairman, Board of Trustees, First Congregational Church.



**SPRINKEL, Beryl W.**  
**Chicago, Illinois**

**BUSINESS ADDRESS**

111 West Monroe Street  
Zip Code 60690  
Phone 312/461-7631

**HOME ADDRESS**

1705 Brookwood Drive  
Flossmoor, Illinois 60422  
Phone 312/798-5681

**FAMILY**

Wife's Name, Barbara. Children: 3 sons, 2 daughters.

**EDUCATION**

University of Missouri, B.S. 1947; University of Chicago, M.B.A. 1948; Ph.D. 1952; Chartered Financial Analyst 1966.

**PREDOMINANT BUSINESS AFFILIATION**

**Executive Vice President and Economist**, Harris Trust and Savings Bank.

**NATIONAL CHAMBER SERVICE:**

**PRESENT**

**Director**, April 28, 1969 to date.

**Chairman**, Banking, Monetary and Fiscal Affairs Committee.

**Member**, Investment Advisory Council.

**PAST**

**Chairman**, Fiscal Policy, and Government Operations and Management Committees.

**Member**, Economic Policy, and Government Operations and Expenditures Committees; Balance of Payments Advisory Panel; Wage-Price Controls Ad Hoc Committee.

**ORGANIZATION AFFILIATIONS AND OFFICES HELD:**

**PRESENT**

**Member**, American Economic Association; American Finance Association; American Statistical Association; American Bankers Association; Chicago Association of Commerce and Industry, Business Research and Statistics Committee; Illinois State Chamber of Commerce, Economic Development Committee; Board of Economists, Time Magazine; Economic Advisory Council; American Bankers Association; The Chicago Committee of the Chicago Council on Foreign Relations.

**Director**, International Monetary Market of the Chicago Mercantile Exchange, Inc.

**Fellow**, National Association of Business Economists.

**PAST**

**Consultant**, Federal Reserve Board; Joint Economic Committee, U.S. Congress; Housing, Banking and Currency Committee; U.S. Bureau of the Census.

#### **SPRINKEL, BERYL W.**

**Chairman**, Research Subcommittee of the Economic Development Committee, Illinois State Chamber of Commerce.

**Member**, Banking & Financial Research Committee, American Bankers Association.

#### **REMARKS:**

U.S. Army, 1943-1945.

Editorial Board, Financial Analysts Journal.

Board of Directors, Homewood-Flossmoor High School.

Instructor, University of Missouri 1948-49; University of Chicago, 1950-52.

Member, Beta Gamma Sigma.

1968 Hamilton Bolton Award, Financial Analysts Federation; 1964 Alumni Leadership and Service Citation, University of Chicago; 1971 Alumni Citation of Merit, University of Missouri.

Author, "Money and Stock Prices," 1964; "Money and Markets: A Monetarist View" 1971; numerous articles for professional journals.



#### **STEINMETZ, William J. Greenwich, Connecticut**

**BUSINESS ADDRESS**  
American Lane  
Zip Code 06830  
Phone 203/552-2133

**HOME ADDRESS**  
82 Deepwood Road  
Stamford, Conn. 06903  
Phone 203/329-9437

#### **FAMILY**

Wife's Name, Joyce, Children: 1 son, 4 daughters.

#### **EDUCATION**

University of Wisconsin, BBA; University of Virginia, BAM; Wisconsin, CPA.

#### **PREDOMINANT BUSINESS AFFILIATION**

**Vice President and Treasurer**, American Can Company.

#### **BUSINESS AFFILIATIONS AND OFFICES HELD:**

##### **PRESENT**

**Director**, Inflex Corporation.

**Director, Vice President & Treasurer**, American Can International Corporation.

##### **NATIONAL CHAMBER SERVICE:**

##### **PRESENT**

**Director**, April 26, 1971 to date.

**Chairman**, Government Operations & Management Committee.

**Member**, Policy, and Taxation Committees.

##### **PAST**

**Member**, Banking, Monetary & Fiscal Affairs, and Nominating Committees.

##### **ORGANIZATION AFFILIATIONS AND OFFICES HELD:**

##### **PRESENT**

**Chairman**, Financial Management Committee, American Paper Institute.

**Member**, Tax Executives Institute; American Institute Certified Public Accountants; Wisconsin Society CPA's.

##### **PAST**

**Chairman**, Executive Committee — New Jersey Taxpayers Association.



**STEWART, Charles T.**  
**New York, New York**

**BUSINESS ADDRESS**

1301 Avenue of the Americas  
 Zip Code 10019  
 Phone 212/957-6502

**HOME ADDRESS**

35 Langdon Avenue  
 Irvington, New York 10533  
 Phone 914/591-8618

**FAMILY**

Wife's Name, Jenifer B. Children: 1 son, 1 daughter.

**EDUCATION**

Phillips Exeter Academy, 1936; Cornell University, A.B., 1940; Yale University School, J.D. 1943.

**PREDOMINANT BUSINESS AFFILIATION**

**Senior Vice President, General Counsel and Director of Public Affairs, J.C. Penney Company, Inc.**

**BUSINESS AFFILIATIONS AND OFFICES HELD:**

**PRESENT**

**Director**, Inmont Corporation; J.C. Penney Financial Corporation; J.C. Penney Insurance Company; J.C. Penney Life Insurance Company; Great American Reserve Insurance Company; Educator & Executive Insurers, Inc.; Educator & Executive Life Insurance Company; Sarma, S.A. (Belgium); J.C. Penney S.p.A. (Italy).

**PAST**

Associated with Cravath, Swaine & Moore (and its predecessor firm), New York City, 1943-45 and 46-55; Assistant Secretary and Assistant General Attorney, R.H. Macy & Co., Inc., New York City, 1955-56; Secretary and General Attorney, 1956-60.

**NATIONAL CHAMBER SERVICE:**

**PRESENT**

**Director**, April 26, 1971 to date.

**Chairman**, Accrediting Board.

**Member**, Business Overview, Consumer Affairs, and Public Affairs Committees.

**PAST**

**Member**, Powell Memorandum Task Force.



**STUART, Robert**  
**Chicago, Illinois**

**BUSINESS ADDRESS**

Midway Center  
 5959 South Cicero Avenue  
 Zip Code 60638  
 Phone 312/284-4054

**HOME ADDRESS**

Outer Drive East  
 400 East Randolph Street (60601)  
 Phone 312/527-2891

**FAMILY**

Wife's Name, Lillian Constance.

**EDUCATION**

University of Illinois, B.S. in Chemical Engineering, 1943.  
 M.I.T. Program for Senior Executives, 1959.

**PREDOMINANT BUSINESS AFFILIATION**

**Chairman of the Board**, National Can Corporation.

**BUSINESS AFFILIATIONS AND OFFICES HELD:**

**PRESENT**

**President, Member**, Board of Governors and Executive Committee, Can Manufacturers Institute.

**Director**, LaSalle National Bank, Chicago; U.S. Home Corporation.

**Member**, Planning Council, Operation Enterprise, American Management Association; Presidents Association; The Conference Board and its Midwest Advisory Council.

**PAST**

**Vice Chairman**, Can Industry Sub-Council of National Industrial Pollution Control Council.

**Member**, Board of Governors, Carbonated Beverage Container Manufacturers Association (Past First President).

**NATIONAL CHAMBER SERVICE:**

**PRESENT**

**Director**, April 29, 1974 to date.

**Member**, Business Overview, and Public Affairs Committees.

**ORGANIZATION AFFILIATIONS AND OFFICES HELD:**

**PRESENT**

**Chairman**, National Minority Purchasing Council.

**Co-chairman**, Advisory Board, B.U.I.L.D.; Salvation Army Fund Raising Campaign.

**Honorary Co-Chairman**, Grand Council, American Indian Center of Chicago.

**Vice President & Director**, Lloyd Morey Scholarship Fund, Inc.

**Trustee**, National Jewish Hospital at Denver.

**Director**, Chicago Community Ventures, Inc.; Chicago Crime Commission.

## STUART, ROBERT

**Director & Member**, Executive Committee, National Council on Crime and Delinquency, and Chairman of its National Executives Committee.

**Member**, Council, World Association of World Federalists, Inc.; Business Advisory Council, Chicago Urban League; Executive Committee of the Citizens Council, Gateway Houses Foundation, Inc.; Board of Trustees and Executive Committee, Provident Hospital of Chicago; Citizens Board, Illinois Masonic Medical Center; Associates, Rehabilitation Institute of Chicago; Board of Directors, National Council and member of Advisory Board, Chicago Area World Federalists (past vice president, president of Chicago Area Branch and Oak Park, Illinois and Warren, Ohio Chapters); Businessman's Advisory Council for College of Business & Administrative Science, University of Illinois at Chicago Circle (past first chairman); University of Illinois Foundation and Presidents Club; Board of Trustees Development Council, Elmhurst College; Citizens Board, University of Chicago; Visiting Committee of the Divinity of Chicago.

### PAST

**Chairman**, Governor's Committee, United Nations Week, 1969, 1970, 1971.

**General Chairman**, 1970, Boy Scout Fun Fair, Chicago Area Council; 1970, Membership Drive, Illinois State Chamber of Commerce.

### REMARKS:

Chairman, Alumni Relations (past president & member, National Executive Council) The Fraternity of Alpha Kappa Lambda.

Chairman, Finance Committee, New First Ward Regular Republicans and founder, First Ward Elephant Club and Cathay Club.

Honorary Membership, Beta Gamma Sigma, Chicago Chapter, University of Illinois.

World War II, Captain, U.S. Army Ordnance Department; served in New Guinea, Philippines, Japanese Occupation.

32 degree Mason, member, Scottish Rite Bodies and Evanston Commandery Knights Templar.

President, Board of Trustees and Congregation, Central Church of Chicago.

Director, Protestant Foundation of Greater Chicago.

Member: Rotary Club of Chicago; Millard Congregational Church; Chicago Yacht Club; Little Ship Club, London; Metropolitan Club, Chicago; Metropolitan Club, New York City; Capitol Hill Club, Washington, D.C.; Republican Party and "Everett Dirksen 500 Club"; United Republican Fund of Illinois.



## SYDNOR, Eugene B., Jr. Richmond, Virginia

### BUSINESS ADDRESS

P.O. Box 1474  
Zip Code 23212  
Phone 804/649-0917

### HOME ADDRESS

6000 St. Andrews Lane (23226)  
Phone 703/282-0394

### FAMILY

Wife's Name, Lucy. Children: 3 sons.

### EDUCATION

Princeton University, B.A.; Harvard University Graduate School of Business Administration, M.B.A.

### PREDOMINANT BUSINESS AFFILIATION

**President**, Southern Department Stores.

### BUSINESS AFFILIATIONS AND OFFICES HELD:

**Director**, Virginia Capital Corporation; United Virginia Bank; Truxmore Industries, Inc.

### NATIONAL CHAMBER SERVICE:

#### PRESENT

**Vice President**, May 1, 1972 to date.

**Chairman**, Education and Manpower Development Committee.

**Member**, Budget, Business Overview, and Executive Committees.

#### PAST

**Director**, May 2, 1966 to May 1, 1972.

**Chairman**, Education, and Manpower Development Committees; Advisory Panel on Employee Recruitment and Job Development.

**Member**, Consumer Affairs, Domestic Distribution, Education, Federal Labor Standards, Government Operations and Expenditures, Human Resources Development, Labor Relations, and Manufacture-Distribution Committees; Powell Memorandum Task Force.

### ORGANIZATION AFFILIATIONS AND OFFICES HELD:

#### PRESENT

**Director**, National Retail Merchants Association; American Retail Federation.

**Trustee**, Virginia Museum of Fine Arts.

#### PAST

**President**, Virginia Retail Merchants Association; Richmond Better Business Bureau.

**Chairman**, Virginia State Board for Community Colleges; Government & Legal Affairs Committee, National Retail Merchants Association.

**Vice President**, National Retail Merchants Association.

**SYDNOR, EUGENE B., JR.**

**Director**, Richmond Chamber of Commerce.

**Chairman**, Virginia State Board of Technical Education.

**REMARKS:**

Member: Virginia House of Delegates, 1954-55; Virginia State Senate, 1955-59; Governor's Advisory Board on Industrial Development, 1962-1970.



**THOMPSON, Robert T.**  
**Atlanta, Georgia**

**BUSINESS ADDRESS**

First National Bank Building  
Atlanta, Georgia 30303  
Phone 404/658-9300

Daniel Building  
Greenville, South Carolina 29602  
Phone 803/242-3200

**HOME ADDRESS**

519 McDaniel Avenue  
Greenville, South Carolina 29605  
Phone 803/242-0526

620 Peachtree Street, N.E., Apt. 2013  
Atlanta, Georgia 30308  
Phone 404/577-4985

**FAMILY**

Wife Name, Elaine. Children: 3 sons.

**EDUCATION**

A.B.; JD — Emory University.

**PREDOMINANT BUSINESS AFFILIATION**

**Senior Partner**, Thompson, Ogletree & Deakins, Attorneys.

**NATIONAL CHAMBER SERVICE:**

**PRESENT**

**Director**, April 26, 1971 to date.

**Chairman**, Labor Relations Committee.

**Member**, Unemployment & Workmen's Compensation Committee.

**PAST**

**Chairman**, Labor Reform Task Force.

**Member**, Goals & Priorities, and Labor Relations Committees; Blue Ribbon Committee on Labor Law Reform; Special Committee on Concentration of Power.

**Participant**, Aircade Meetings for Citizenship Action.

**ORGANIZATION AFFILIATIONS AND OFFICES HELD:**

**PRESENT**

**Member**, American Bar Association; Atlanta Bar Association; Georgia Bar Association; State Bar of Georgia; Industrial Relations Committee, Georgia State Chamber of Commerce; Atlanta Chamber of Commerce; South Carolina State Chamber of Commerce (labor counsel); Greenville Chamber of Commerce; American Judicature Society; Society of Hospital Attorneys, American Hospital Association; National Association of Manufacturers.

**PAST**

**Secretary-Treasurer**, Atlanta Bar Association.

**President**, Young Lawyers Section, Georgia Bar Association.

**Board of Governors**, Georgia Bar Association.



**THOMPSON, ROBERT T.**

**REMARKS:**

Member: Lawyers Club of Atlanta; Atlanta Press Club, The Commerce Club and Cherokee Town & Country Club (Atlanta); Emory University Alumni Council; University Club, Washington, D.C.; Bal Harbour Club, Bal Harbour, Florida.

Former part-time lecturer Emory University Law School.



**VANANDEL, Jay  
Ada, Michigan**

**BUSINESS ADDRESS**

7575 E. Fulton  
Zip Code 49301  
Phone 616/676-6000

**HOME ADDRESS**

7186 Windy Hill  
Grand Rapids, Michigan 49506

**FAMILY**

Wife's Name, Betty. Children: 2 sons, 2 daughters.

**EDUCATION**

Calvin College, Grand Rapids; Yale University, New Haven, Av. Cadet School.

**PREDOMINANT BUSINESS AFFILIATION**

**Chairman of the Board**, Amway Corporation, U.S.A.

**BUSINESS AFFILIATIONS AND OFFICES HELD:**

**PRESENT**

**Chairman of the Board**, Amway of Canada; Amway of Australia; Amway Ltd. (United Kingdom); Amway Mutual Fund; Amway Management Company; Amway (Germany); Nutrilite Products Company (U.S.A.).

**Director**, Michigan National Bank.

**NATIONAL CHAMBER SERVICE:**

**PRESENT**

**Director**, May 1, 1972 to date.

**Chairman**, Membership Committee.

**Member**, Business Overview, Consumer Affairs, and Nominating Committees; Council on Trends & Perspective.

**PAST**

**Member**, Environmental Pollution Panel; Powell Memorandum Task Force.

**ORGANIZATION AFFILIATIONS AND OFFICES HELD:**

**PRESENT**

**Chairman**, Michigan Republican Finance Committee; Michigan State Officers Compensation Commission.

**Director**, Soap and Detergent Association, U.S.A.; Ferguson-Droste-Ferguson Hospital; Metropolitan YMCA, Grand Rapids; Michigan Chamber of Commerce; Calvin College Foundation; World Affairs Council; Trustee-Hillsdale College.

**Member**, President's Council, Direct Selling Association, U.S.A.; Advisory Council, National 4H Foundation; Advisory Council, Religious Heritage of America.

**PAST**

**Chairman**, Michigan State Chamber of Commerce.

**Member**, White House Conference, Industrial World Ahead, 1972.

**VANANDEL, JAY**

**REMARKS:**

Elder, LaGrave Christian Reformed Church.

Aviation Cadet and Army Air Corps officer, Armament and Chemical Warfare, U.S. Army Air Corps, 1st Lt., 1942-45; Reserve officer, 1945-1950.

Member, Peninsular Club, Grand Rapids; Capitol Hill Club, Washington, D.C.; Detroit Economic Club, Detroit; Cat Cay Club, Bahamas.



**VERITY, C. William, Jr.  
Middletown, Ohio**

**BUSINESS ADDRESS**

Zip Code 45042  
Phone 513/425-2041

**HOME ADDRESS**

600 Thorn Hill Lane (45042)  
Phone 513/423-8689

**FAMILY**

Wife's Name, Peggy. Children: 2 sons, 1 daughter.

**EDUCATION**

Yale University, Bachelor's degree in Economics, 1939.

**PREDOMINANT BUSINESS AFFILIATION**

**Chairman of the Board and Chief Executive Officer,**  
Armco Steel Corporation.

**BUSINESS AFFILIATIONS AND OFFICES HELD:**

**PRESENT**

**Chairman,** Board of Trustees, Ford's Theater Society,  
Washington.

**Director,** First National Bank of Middletown; The Mead  
Corporation of Dayton, Ohio; Business International, New  
York City; The Boston Company, Boston, Massachusetts;  
Taft Broadcasting Company, Cincinnati; Thunderbird  
Graduate School of International Management, Glendale,  
Arizona.

**PAST**

**President and Chief Executive Officer, Executive Vice  
President, — Steel,** Armco Steel Corporation.

**NATIONAL CHAMBER SERVICE:**

**PRESENT**

**Director,** April 30, 1973 to date.

**Member,** Accrediting Board; Public Affairs Committee;  
Foreign Trade Policy Panel.

**PAST**

**Member,** Committee to Interpret Business; International  
Committee.

**ORGANIZATION AFFILIATIONS AND OFFICES HELD:**

**PRESENT**

**Vice President,** Commonwealth Club of Cincinnati, Ohio.

**Executive Committee and Director,** American Iron &  
Steel Institute.

**PAST**

**Director and Past President,** Middletown Area Chamber  
of Commerce.

**Director,** Middletown Civic Association.

**REMARKS:**

Lieutenant, U.S. Navy, 1942-1946.

Senior Warden, Church of the Ascension.

Trustee, University of Dayton.



**WALLACE, Anthony E.  
Hartford, Connecticut**

**BUSINESS ADDRESS**  
P.O. Box 2010  
Zip Code 06101  
Phone 203/666-2431

**HOME ADDRESS**  
201 Andrews Street  
Southington, Connecticut 06489  
Phone 203/621-0854

**FAMILY**

Wife's Name, Helen. Children: 2 sons.

**EDUCATION**

University of California at Los Angeles; Harvard Business School.

**PREDOMINANT BUSINESS AFFILIATION**

**President and Chief Executive Officer**, The Connecticut Light and Power Company.

**BUSINESS AFFILIATIONS AND OFFICES HELD:**

**PRESENT**

**Director**, The Connecticut Water Company; The Hartford Electric Light Company; Holyoke Water Power Company; Northeast Nuclear Energy Company; Northeast Utilities Service Company; Western Massachusetts Electric Company; The Connecticut Mutual Life Insurance Company; Mohasco Corp.

**Trustee and Corporator**, Society for Savings.

**Trustee and First Vice Chairman**, Connecticut Educational Television Corporation.

**PAST**

**Director**, The Village Water Company of Simsbury.

**NATIONAL CHAMBER SERVICE:**

**PRESENT**

**Director**, April 29, 1974 to date.

**Chairman**, Budget Committee.

**Member**, Natural Resources, Nominating, and Public Affairs Committees; Investment Advisory Council.

**PAST**

**Director**, April 29, 1968 to April 26, 1971.

**Vice President**, April 26, 1971 to April 29, 1974.

**Member**, Accrediting Board; Special Committee on Welfare Programs and Income Maintenance; Special Committee on Nation's Health Care Needs; Executive, and Goals & Priorities Committees.

**ORGANIZATION AFFILIATIONS AND OFFICES HELD:**

**PRESENT**

**President and Chairman**, Executive Committee, The Connecticut Electric and Gas Association, Inc.

**WALLACE, ANTHONY E.**

**Board of Trustees**, Samuel I. Ward Technical College; Connecticut Public Expenditure Council.

**National Board of Trustees and Member**, Executive Committee, Regional Board of Directors, The National Conference of Christians and Jews, Inc.; Connecticut Regional Medical Program; National Emergency Committee on National Council on Crime and Delinquency.

**Board of Directors**, American School for the Deaf; The University of Connecticut Foundation; Business-Industry Political Action Committee (also Regional Vice-Chairman); Connecticut Business & Industry Association.

**Corporator**, Mount Sinai Hospital; The Institute of Living; The New Britain General Hospital.

**Member**, Connecticut Citizens Conference on the General Assembly; Connecticut Clean Campaign Committee; Executive Committee, Natural Resources Council of Connecticut, Inc.; Management Advisory Committee, Rensselaer Polytechnic Institute of Connecticut, Inc.; Board of Advisors, Connecticut Foundation for Independent Schools, Inc.; Finance Advisory Committee of The Connecticut Joint Council on Economic Education; Committee on Federal Finance, Council of State Chambers of Commerce; The Economic Club of New York; The Hundred Club of Connecticut, Inc.; The New England Gas Association; The Sterling Opera Foundation, Inc.; Harvard Business School of Northern Connecticut.

**State Chairman**, U.S. Savings Bonds Volunteer Committee.

**PAST**

**Director, Chairman and President**, The Connecticut State Chamber of Commerce, Inc.

**Chairman**, Connecticut State Board of Pesticide Control; Finance Advisory Committee, Connecticut Council for the Advancement of Economic Education.

**Director**, The New England Council; The New England Gas Association.

**Assistant Director of Research and Planning**, Connecticut State Development Commission.

**Member**, State of Connecticut Clean Air Task Force; Faculty of Hillyer College (University of Hartford); Public Utility Executive Program Advisory Committee, The University of Michigan; Public Utilities Advertising Association; Connecticut River Watershed Council, Inc.; Connecticut State Board of Pesticide Control; Governor's Committee on Environmental Policy; Education Committee, Greater Hartford Chamber of Commerce; Regional Advisory Committee for the Capitol Region; Public Affairs Research Council, The Conference Board; Connecticut Humanities Council; American Institute of Planners; Regional Plan Association.

**WALLACE, ANTHONY E.**

**Advisory Committee**, Electric Companies Advertising Program.

**REMARKS:**

Speaker of the Connecticut House of Representatives, 1961-1962.

Served three successive terms as Representative in the Connecticut General Assembly.



**WELLER, Ralph A.**  
**New York, New York**

**BUSINESS ADDRESS**  
245 Park Avenue  
Zip Code 10017  
Phone 212/557-5560

**HOME ADDRESS**  
39 East 67th Street (10021)  
Phone 212/879-8552

**FAMILY**

Children: 3 sons.

**EDUCATION**

Virginia Military Institute, B.S. in Civil Engineering, 1942.  
Harvard University, M.B.A., 1947.

**PREDOMINANT BUSINESS AFFILIATION**

**President and Chief Executive Officer**, Otis Elevator Company.

**BUSINESS AFFILIATIONS AND OFFICES HELD:**

**PRESENT**

**Trustee**, The Penn Mutual Insurance Company; Consolidated Edison Company of New York; Harlem Savings Bank.

**Director**, Lockheed Aircraft Corporation.

**Board member**, Chemical Bank, Grand Central Advisory Board.

**NATIONAL CHAMBER SERVICE:**

**PRESENT**

**Director**, April 30, 1973 to date.

**Chairman**, Foreign Trade Policy Panel.

**Member**, International Committee.

**ORGANIZATION AFFILIATIONS AND OFFICES HELD:**

**PRESENT**

**President**, State Traffic Safety Council (New York).

**Treasurer**, Romanian-U.S. Economic Council (U.S. Section).

**Director and Treasurer**, New York Building Congress.

**Trustee**, U.S. Council of the International Chamber of Commerce, Inc.

**Trustee and Member** of the Executive Committee of the Council of the Americas.

**Director-Chairman**, Occupational Health & Safety Committee, National Association of Manufacturers.

**Member**, Advisory Council — Japan-U.S. Economic Relations; Development Committee of the Foreign Policy Association; Emergency Committee for American Trade (ECAT).

**REMARKS:**

Lt. Col., Marine Corps, 1942-1946 (Reserve duty until 1961).

**WELLER, RALPH A.**

Member: The Sky Club of New York; The Olympic Club of San Francisco; The Blind Brook Club, New York; Winged Foot Golf Club, Mamaroneck, New York; The Economic Club of New York; The Newcomen Society in North America.



**WHITFIELD, Allen  
Des Moines, Iowa**

**BUSINESS ADDRESS**  
1400 Central National Bank Building  
Zip Code 50309  
Phone 515/288-6041

**HOME ADDRESS**  
Apt. 802, The Park-Fleur  
3131 Fleur Drive (50321)  
Phone 515/243-4828

**FAMILY**

Wife's Name, Irma. Children: 1 son, 1 daughter.

**EDUCATION**

University of Nebraska; Iowa State University, B.S., 1924; Harvard Law School, LL.B., 1927; Drake University Law School.

**PREDOMINANT BUSINESS AFFILIATION**

**Senior Partner**, Whitfield, Musgrave, Selvy, Kelly & Eddy.

**BUSINESS AFFILIATIONS AND OFFICES HELD:**

**PRESENT**

**Director**, Financial General Bankshares, Inc.; Hawkeye-Security Insurance Company; Northeastern Insurance Company; United Security Insurance Company; Financial Security Group, Inc.; Valley Bank and Trust Company; Middlewest Investment Company.

**PAST**

**Director**, Guaranty Savings Life Insurance Company; United Security Life Company; Des Moines Life and Casualty Company; International Bank; Matt Parrott & Sons Company; Financial International Corporation; Mid-America Publishing Company.

**NATIONAL CHAMBER SERVICE:**

**PRESENT**

**Director**, May 1, 1972 to date.

**Chairman**, Bylaws Committee.

**Member**, Antitrust & Trade Regulation, and Government Operations & Management Committees; Special Committee on Nation's Health Care Needs; National Chamber Foundation Board.

**PAST**

**Director**, April 30, 1963 to April 28, 1969.

**Treasurer**, April 28, 1969 to May 1, 1972.

**Chairman**, Antitrust & Trade Regulation Committee; Accrediting Board; Special Committee on Nation's Health Care Needs.

**Chairman**, Board of Directors, National Chamber Foundation.

**Member**, Budget, Bylaws, Economic Policy, Education, Executive, Finance, and Taxation Committees; Investment Advisory Council; Advisory Panel on Modernizing Local & State Government; Powell Memorandum Task Force.

**WHITFIELD, ALLEN**

**ORGANIZATION AFFILIATIONS AND OFFICES HELD:**

**PRESENT**

**Trustee**, Simpson College; Morningside College.

**Director**, Iowa State University Foundation; Greater Des Moines Chamber of Commerce.

**PAST**

**President**, U.S. Junior Chamber of Commerce; Iowa Junior Chamber of Commerce; Greater Des Moines Chamber of Commerce; Iowa State College Alumni Association.

**Trustee**, Alumni Achievement Fund, Iowa State University.

**Chairman**, Veterans' Memorial Auditorium Commission.

**Co-Chairman**, Crusade for Freedom.

**Director**, Memorial Union Iowa State University.

**REMARKS:**

United States Army, 1942-45, Lt. Colonel, Deputy Chief, Civilian Supply Branch; awarded Legion of Merit; Lay Leader, Iowa-Des Moines Conference, Methodist Church; Kappa Sigma Fraternity; Recipient of 1966 Des Moines Community Award.



**WHYTE, William G.  
Washington, D.C.**

**BUSINESS ADDRESS**

1625 K Street, N.W.  
Zip Code 20006  
Phone 202/783-2000

**HOME ADDRESS**

5124 Rockwood Parkway, N.W. (20016)  
Phone 202/362-5033

**FAMILY**

Wife's Name, Margaret (Peggy). Children: 2 sons.

**EDUCATION**

University of Illinois School of Commerce, B.S.; Post Graduate work in journalism, Northwestern.

**PREDOMINANT BUSINESS AFFILIATION**

**Vice President-Washington**, United States Steel Corporation.

**NATIONAL CHAMBER SERVICE:**

**PRESENT**

**Director**, April 28, 1969 to date.

**Chairman**, Business Overview, and Public Affairs Committees.

**PAST**

**Chairman**, Powell Memorandum Task Force; Private Pension Plans Committee.

**Member**, International, National Defense, Nominating, and Separation of Powers Committees; Committee to Interpret Business; Labor Reform Task Force.

**ORGANIZATION AFFILIATIONS AND OFFICES HELD:**

**PRESENT**

**President**, National Capital Area Council, Boy Scouts of America.

**Chairman**, Government Relations Committee, Business Roundtable.

**Vice President and Trustee**, Federal City Council.

**Board of Trustees**, American University.

**Director**, Business-Government Relations Council.

**Member**, Government Relations Committee, American Iron and Steel Institute.

**PAST**

**President, Washington Chapter**, National Security Industrial Association; Business-Government Relations Council.

**Vice President**, National Capital Area Council, Boy Scouts of America.

**Consultant**, Public Affairs Department, National Association of Manufacturers.

**REMARKS:**

Colonel, U.S. Army 1941-1946; decorated with Legion of Merit, the Bronze Star and the French Croix de Guerre.



**WINTER, Walker**  
**Chicago, Illinois**

**BUSINESS ADDRESS**

One IBM Plaza, Suite 3100  
Zip Code 60611  
Phone 312/467-9300

**HOME ADDRESS**

1455 North Sandburg Terrace (60610)  
Phone 312/943-3389

**FAMILY**

Children: 2 sons, 1 daughter.

**EDUCATION**

American University; George Washington University, B.A.;  
Harvard Law School (J.D., cum laude).

**PREDOMINANT BUSINESS AFFILIATION**

**Partner**, Ross, Hardies, O'Keefe, Babcock, & Parsons.

**BUSINESS AFFILIATIONS AND OFFICES HELD:**

**PAST**

Covington & Burling, Washington, D.C.

**Attorney**, Joint Congressional Committee on Internal Revenue Taxation.

**NATIONAL CHAMBER SERVICE:**

**PRESENT**

**Director**, April 27, 1970 to date.

**Chairman**, Taxation Committee.

**Member**, Banking, Monetary & Fiscal Affairs, and Private Pension — Social Security Committees.

**PAST**

**Director**, April 26, 1965 to May 1, 1967.

**Vice President**, May 1, 1967 to April 27, 1970.

**Member**, Budget, Executive, Economic Security, Government Operations & Expenditures Committees; Accrediting Board; Committee on Private Pension Plans; Foundation Fund; Special Committee to Consider the Problems of the Dollar (ex officio); Special Committee on Long Range Tax Policy and Balanced Growth; Special Committee on Welfare Programs and Income Maintenance.

**ORGANIZATION AFFILIATIONS AND OFFICES HELD:**

**PRESENT**

**Vice Chairman & Executive Council**, Committee on Federal Taxation, Chicago Bar Association.

**General Secretary**, Chicago Association of Commerce and Industry.

**Member**, Federal Taxation Committee, Illinois State Chamber of Commerce; Federal Bar Association; Section of Taxation, American Bar Association; Chicago Federal Tax Forum; The Economic Club of Chicago; Planning Committee, The University of Chicago Law School Federal Tax Conference; Governing Board, Illinois Council on Economic Education.

**WINTER, WALKER**

**PAST**

**Director & Vice President**, Governmental Affairs Division, Chicago Association of Commerce & Industry.

**Delegate**, Illinois, National Tax Association Conference.

**Advisory Council**, National Tax Association — Tax Institute of America.

**Revising Editor**, Mertens Law of Federal Income Taxation.

**REMARKS:**

U.S. Naval Reserve, 1941-1946, Lt. Commander.

Editor, Harvard Law Review.

Member: Metropolitan Club, Washington, D.C.; University Club, Chicago; Sigma Alpha Epsilon and Gate and Key (honorary) fraternities.



**YOHALEM, Aaron S.**  
**Englewood Cliffs, New Jersey**

**BUSINESS ADDRESS**

International Plaza  
Zip Code 07632  
Phone 201/894-2131

**HOME ADDRESS**

10 Kerry Lane  
Chappaqua, New York 10514  
Phone 914/238-4894

**FAMILY**

Wife's Name, Lillian. Children: 1 son, 2 daughters.

**EDUCATION**

College of the City of New York; New York University Law School, LLB, 1934.

**PREDOMINANT BUSINESS AFFILIATION**

**Senior Vice President and Director**, CPC International Inc.

**BUSINESS AFFILIATIONS AND OFFICES HELD:**

**PAST**

**Executive Vice President and Director**, The Best Foods, Inc.

**NATIONAL CHAMBER SERVICE:**

**PRESENT**

**Director**, April 28, 1969 to date.

**Chairman**, Council on Trends & Perspective.

**Member**, Business Overview, Bylaws, and Public Affairs Committees.

**PAST**

**Chairman**, Consumer Affairs Committee.

**Member**, Council on Trends & Perspective; Manufacture-Domestic Distribution, and Consumer Affairs Committees; Special Committee on Concentration of Power.

**ORGANIZATION AFFILIATIONS AND OFFICES HELD:**

**PRESENT**

**Vice Chairman and Director**, Executive Committee of the Agribusiness Council.

**Member**, Executive Committee, Industry Cooperative Programme, Food and Agriculture Organizations (FAO) United Nations; Grocery Manufacturers Association; Corn Refiners Association.

**PAST**

**Member**, National Marketing Advisory Committee to the Secretary of Commerce; National Association of Manufacturers Economic and International Affairs Committee.

**REMARKS:**

New York University Law Alumni; Federal City Club; New York University Club.



**YONAHLEM, Aaron S.**  
Englewood Cliffs, Near Jersey

**BUSINESS COURSES**

New York State  
College of Business  
The City University of New York

**HOME ADDRESS**

18 Park Lane  
Englewood Cliffs, New Jersey  
Phone 2-4744-0285

**FAMILY**

Wife's Name: Lilian; Children: 1 son, 2 daughters

**EDUCATION**

College of the City of New York; New York University Law  
School 1954-1958

**PROFESSIONAL BUSINESSES AND OFFICES**

Senior Vice President and Director, The East Rock  
Co.

**BUSINESS AFFILIATIONS AND OFFICES HELD**

**PAST**

Executive Vice President and Director, The East Rock  
Co.

**NATIONAL CHARITABLE SERVICE**

**PRESENT**

Director, National Council on  
Economic Education of the U.S. Department of  
Member, National Council on Economic Education  
Committee

**PAST**

Chairman, Consumer Affairs Committee  
Member, Council on Trade & Protective Machinery &  
Domestic Distribution and Consumer Affairs Committee,  
U.S. Department of Commerce

**ORGANIZATION AFFILIATIONS AND OFFICES HELD**

**PRESENT**

Vice Chairman and Director, Executive Committee of the  
Kortbeek Foundation  
Member, Executive Committee, Executive Committee  
Programs, Food and Agriculture Organizations of the  
United Nations, Specialty Manufacturers Association, Dairy  
Industry Association

**PAST**

Member, National Council of Advisory Committee to the  
Department of Commerce, National Association of Manufacturers  
Executive Committee and the National Trade Committee

**REMARKS**

New York University was a part of Federal City Club, New  
York University City



CHAMBER OF COMMERCE OF THE UNITED STATES  
1615 H STREET, N.W. / WASHINGTON, D.C. 20062

THE WHITE HOUSE  
WASHINGTON



TO: MRS. FORD  
FROM: SUSAN PORTER  
RE: February 20th, 11:00 a.m., Chamber of Commerce  
Wives' Coffee \*

- 11:00 Leave White House and walk over to Blair House.
- 11:02 Arrive Blair House where you will be met by  
Mrs. Rhea Smith (wife of Chairman of the Board)  
and Mrs. William Whyte.
- Have a cup of coffee and mingle informally.
- 11:20 Return to White House.

Background

The Board of Directors of the United States Chamber of Commerce meets quarterly. Their wives accompany them twice a year, in November and February, for their two-day meetings. Following the coffee at Blair House they will have a tour of Blair House with Mrs. Wilroy and then will go on to lunch at the F Street Club. Attached is a list of the wives attending and their home towns.

February 19, 1975

WHITE-HOUSE PHOTOGRAPHER ONLY;  
NO PRESS.

WIVES OF THE BOARD OF DIRECTORS OF THE UNITED STATES CHAMBER OF COMMERCE

ANDERSON, KATHLEEN JAY (MRS. J.D.)  
Omaha, Nebraska

ANNIS, BETTY STARCK (MRS. EDWARD R.)  
New York, New York

BARRAN, JEAN L. (MRS. ALFRED J.)  
Edmonds, Washington

BOOTH, WILMA GRACE (MRS. ARCH N.)  
Washington, D. C.

CRUTCHFIELD, JACQUELIN WILLIAMS (MRS. CHARLES H.)  
Charlotte, North Carolina

DAVIS, MARY LOUISE HAYWOOD (MRS. ARCHIE K.)  
Winston-Salem, North Carolina

EGGER, PATRICIA (MRS. ROSCOE L.)  
Bethesda, Maryland

EVANS, LOLA (AUSTAD) (MRS. MARK)  
Washington, D. C.

FULTON, RUTH ROSSMAN (MRS. ALFRED)  
Billings, Montana

GOLDY, GENEVIEVE RUSTVOLD (MRS. DANIAL)  
Washington, D. C.

GROVE, LOIS (MRS. DAVID L.)  
Armonk, New York

HAGEMAN, ELIZABETH J. (MRS. WARREN)  
Lafayette, California

HILBURN, CHARLOTTE BERTHA (MRS. EARL D.)  
Upper Saddle River, New Jersey

KAPNICK, MARY REDUS (MRS. HARVEY)  
Winnetka, Illinois

LOWE, PEARL FOUSEK (MRS. WILLIAM S.)  
Mexico, Missouri

MAGILL, AILEEN O'CONNOR  
Birmingham, Michigan



MURPHY, MARY ALICE PASSMAN (MRS. J. KEVIN)  
New York, New York

NEWTON, EDITH JOHNSON (MRS. W.F.)  
Pittsburgh, Pennsylvania

PETTY, LEE MILLS (MRS. JOHN)  
Chevy Chase, Maryland

PURYEAR, BEVERLY CORR (MRS. RICHARD)  
Birmingham, Alabama

RASBERRY, HELEN ROBINSON (MRS. WILLIAM C.)  
Shreveport, Louisiana

RICHEY, MARTHA EWIG (MRS. HERBERT S.)  
Bath, Ohio

RUST, HARRIETT (MRS. EDWARD)  
Bloomington, Illinois

SCOTT, LAURA ELIZABETH (BETTY) HEWES (MRS. TOM B.)  
Jackson, Mississippi

SHORT, ELIZABETH H. (MRS. HAROLD)  
Boulder, Colorado

SHUMWAY, HETTIE LAKIN (MRS. F. RITTER)  
Rochester, New York

SIMMONS, BETTY SWEET SMITH (MRS. WILLIAM P.)  
Macon, Georgia

SMITH, RHEA DAY (MRS. CHARLES H.)  
Shaker Heights, Ohio

SONNEMANN, HELEN A. (MRS. ROGER C.)  
Chappaqua, New York

SPRINKEL, BARBARA (MRS. BERYL)  
Flossmoor, Illinois

STEINMETZ, JOYCE IRENE (BOSANNY) (MRS. WILLIAM J.)  
Stamford, Connecticut

SYDNOR, LUCY HARVEY (MRS. EUGENE B.)  
Richmond, Virginia

THOMPSON, ELAINE CHESHIRE (MRS. ROBERT)  
Greenville, South Carolina

VANANDEL, BETTY JEAN (MRS. JAY)  
Grand Rapids, Michigan



VAN METER, BONNIE (MRS. WILLIAM G.)  
Rockville, Maryland

VERITY, PEGGY WYMOND (MRS. WILLIAM)  
Middletown, Ohio

WHYTE, MARGARET PAINE (PEGGY) (MRS. WILLIAM G.)  
Washington, D. C.

YOHALEM, LILLIAN (MRS. AARON S.)  
Chappaqua, New York

