

The original documents are located in Box 65, folder “August 15, 1972 - H.R. Haldeman - Abortion Memo” of the Robert Teeter Papers at the Gerald R. Ford Presidential Library.

Copyright Notice

The copyright law of the United States (Title 17, United States Code) governs the making of photocopies or other reproductions of copyrighted material. Gerald Ford donated to the United States of America his copyrights in all of his unpublished writings in National Archives collections. Works prepared by U.S. Government employees as part of their official duties are in the public domain. The copyrights to materials written by other individuals or organizations are presumed to remain with them. If you think any of the information displayed in the PDF is subject to a valid copyright claim, please contact the Gerald R. Ford Presidential Library.

COMMITTEE FOR THE RE-ELECTION OF THE PRESIDENT

MEMORANDUM

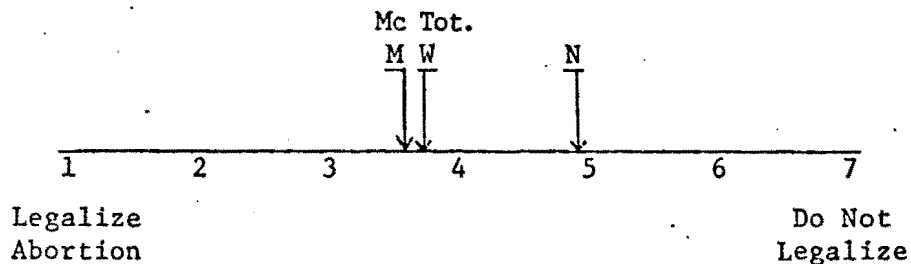
August 15, 1972

~~CONFIDENTIAL/EYES ONLY~~

MEMORANDUM FOR: MR. H. R. HALDEMAN
 FROM: ROBERT M. TEETER
 SUBJECT: Abortion Memo

This is in response to your further inquiry concerning our memorandum on abortion.

As the following table shows, men have slightly more liberal attitudes about abortion than do women, and men's attitudes are closer to the McGovern position than women. Although this is true, it is our judgment that abortion is a more important issue to women than men.

Views on Abortion ^{1/}

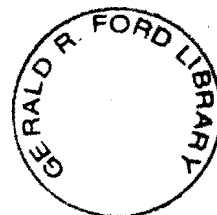
In answer to your further question the following tables show the increases in Catholic vote from the first wave. The change in the Catholic vote corresponds closely to the total change which has occurred in most states since the first wave except in Indiana and Ohio:

^{1/}

Tot = Total Voters
 M = Male Voters
 W = Female Voters
 N = Total Rating Nixon
 Mc = Total Rating McGovern

Determined to be an
 Administrative Marking

By CCG NARA, Date 2/8/2010



PERCENTAGE COMMITTED NIXON VOTE

<u>State</u>	<u>Total</u>			<u>Catholic</u>		
	<u>Wave I^{2/}</u>	<u>Wave II^{3/}</u>	<u>Change</u>	<u>Wave I^{2/}</u>	<u>Wave II^{3/}</u>	<u>Change</u>
California	42%	48%	+ 6%	36%	42%	+ 6%
Indiana	47	54	+ 7	31	51	+20
Maryland	47	52	+ 5	49	56	+ 7
Missouri	39	44	+ 5	37	43	+ 6
New Jersey	49	49	+ 0	52	50	- 2
New York	46	49	+ 3	54	53	- 1
Ohio	49	56	+ 7	37	51	+14
Oregon	45	42	- 3	27	23	- 4
Pennsylvania	43	49	+ 6	32	42	+10
Texas	44	54	+10	39	41	+ 2
Wisconsin	41	44	+ 3	29	33	+ 4

2/ Nixon/Muskie/Undecided Ballot

3/ Nixon/McGovern/Undecided Ballot

~~CONFIDENTIAL/EYES ONLY~~

